

F.A.P. RTE.	SECTION	COUNTY	TOTAL SHEETS	SHEET NO.
021	2011-069-T	DUPAGE	ILLINOIS	1
ILLINOIS			CONTRACT NO. 60P88	

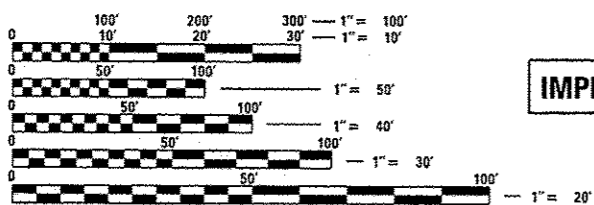
STATE OF ILLINOIS
DEPARTMENT OF TRANSPORTATION
DIVISION OF HIGHWAYS

PROPOSED HIGHWAY PLANS

F.A.P. ROUTE 021: US 20 (LAKE STREET)
EAST OF ROSELLE ROAD /BLOOMINGDALE ROAD
SECTION: 2011-069-T
DRAINAGE CORRECTION
DuPage COUNTY
C-91-626-11

FOR INDEX OF SHEETS, SEE SHEET NO. 2

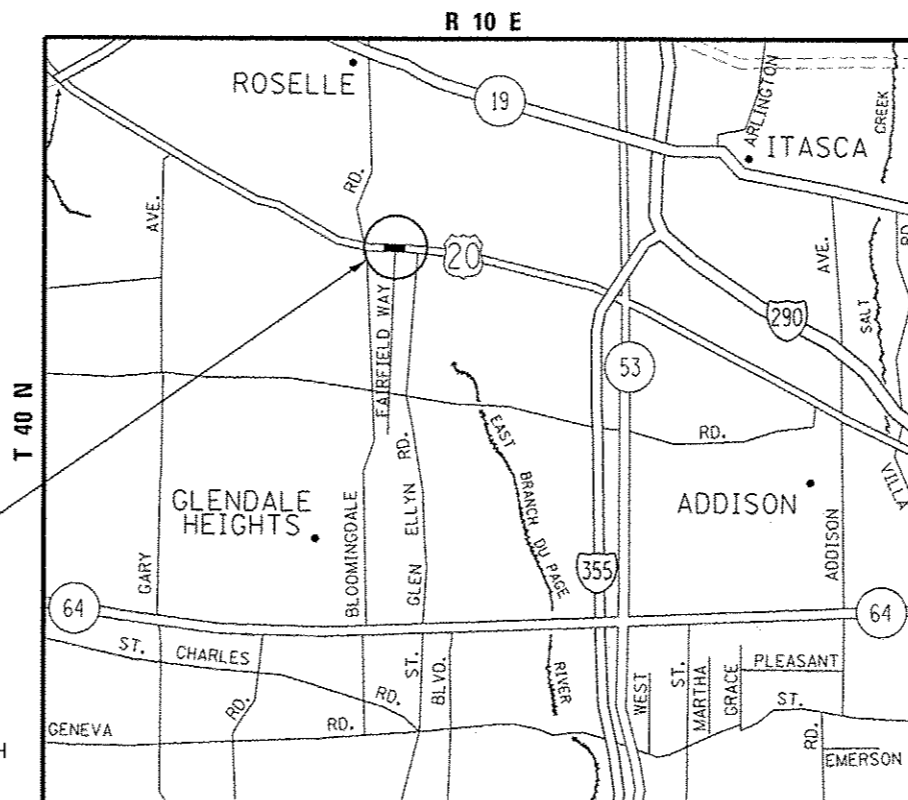
THE IMPROVEMENT IS LOCATED IN THE VILLAGE OF BLOOMINGDALE



FULL SIZE PLANS HAVE BEEN PREPARED USING STANDARD ENGINEERING SCALES. REDUCED SIZED PLANS WILL NOT CONFORM TO STANDARD SCALES. IN MAKING MEASUREMENTS ON REDUCED PLANS, THE ABOVE SCALES MAY BE USED.

J.U.L.I.E.
JOINT UTILITY LOCATION INFORMATION FOR EXCAVATION
1-800-892-0123
OR 811

IMPROVEMENT LOCATION



BLOOMINGDALE TOWNSHIP

GROSS LENGTH = 350.00 FT. = 0.066 MILE
NET LENGTH = 165.50 FT. = 0.031 MILE

TRAFFIC DATA:
SPEED LIMIT = 35 MPH
2011 ADT = 42,200

PROJECT ENGINEER: ROBERT BORO (847) 705-4237
PROJECT MANAGER: ISSAM RAYYAN

CONTRACT NO. 60P88

STATE OF ILLINOIS
DEPARTMENT OF TRANSPORTATION
DIVISION OF HIGHWAYS

SUBMITTED July 5, 2012

John P. ...
DEPUTY DIRECTOR OF HIGHWAYS, REGION ENGINEER

August 17, 2012
John D. ...
ENGINEER OF DESIGN AND ENVIRONMENT

August 17, 2012
William R. ...
DIRECTOR OF HIGHWAYS, CHIEF ENGINEER

PRINTED BY THE AUTHORITY
OF THE STATE OF ILLINOIS