

STATE OF ILLINOIS
DEPARTMENT OF TRANSPORTATION
DIVISION OF HIGHWAYS
PROPOSED HIGHWAY PLANS

F.A.P. ROUTE 021: US 20 (LAKE STREET)
EAST OF ROSELLE ROAD /BLOOMINGDALE ROAD

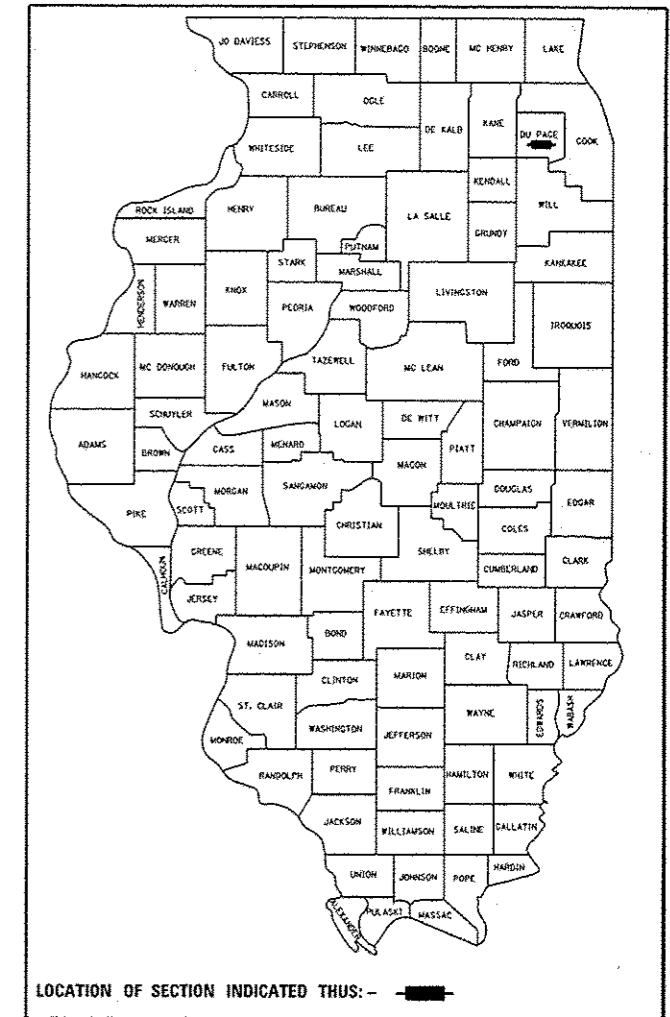
SECTION: 2011-069-T
DRAINAGE CORRECTION
DuPage COUNTY

C-91-626-11

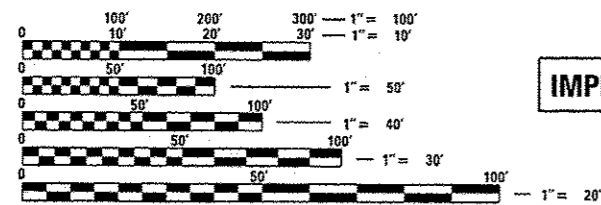
F.A.P. RTE.	SECTION	COUNTY	TOTAL SHEETS	SHEET NO.
021	2011-069-T	DUPAGE	1	1
		ILLINOIS	CONTRACT NO. 60P88	

FOR INDEX OF SHEETS, SEE SHEET NO. 2

THE IMPROVEMENT IS LOCATED IN THE VILLAGE OF BLOOMINGDALE



LOCATION OF SECTION INDICATED THUS: - [black rectangle] -



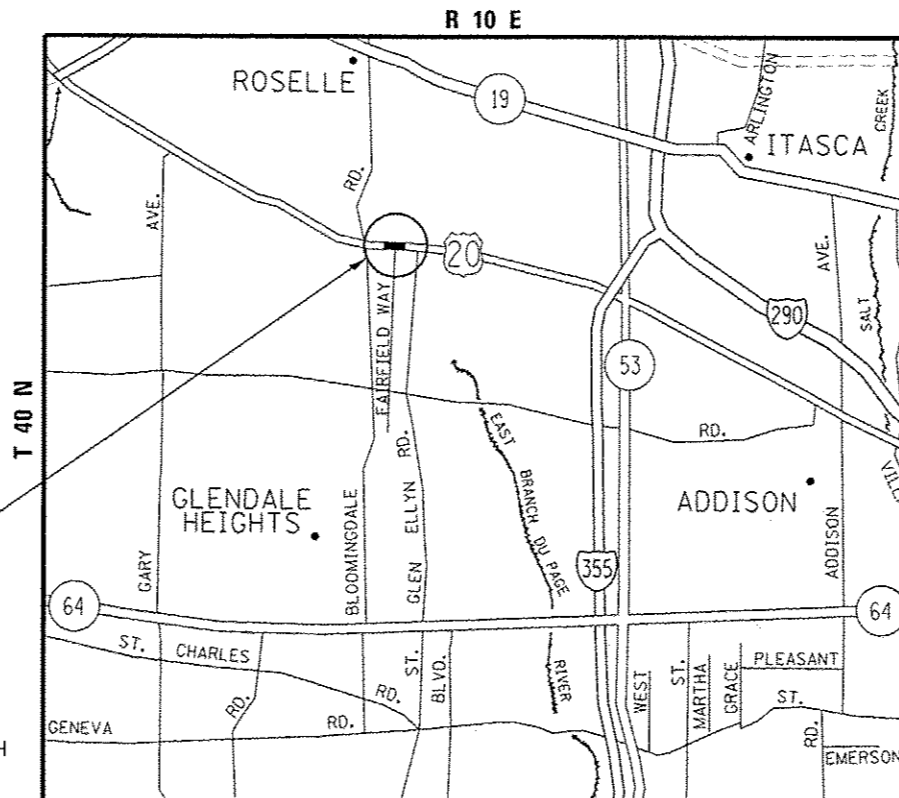
FULL SIZE PLANS HAVE BEEN PREPARED USING STANDARD ENGINEERING SCALES. REDUCED SIZED PLANS WILL NOT CONFORM TO STANDARD SCALES. IN MAKING MEASUREMENTS ON REDUCED PLANS, THE ABOVE SCALES MAY BE USED.

J.U.L.I.E.
 JOINT UTILITY LOCATION INFORMATION FOR EXCAVATION
 1-800-892-0123
 OR 811

PROJECT ENGINEER: ROBERT BORO (847) 705-4237
 PROJECT MANAGER: ISSAM RAYYAN

CONTRACT NO. 60P88

IMPROVEMENT LOCATION



BLOOMINGDALE TOWNSHIP

TRAFFIC DATA:
 SPEED LIMIT = 35 MPH
 2011 ADT = 42,200

GROSS LENGTH = 350.00 FT. = 0.066 MILE
 NET LENGTH = 165.50 FT. = 0.031 MILE

STATE OF ILLINOIS
 DEPARTMENT OF TRANSPORTATION
 DIVISION OF HIGHWAYS

SUBMITTED July 5, 2012
John P. [Signature]
 DEPUTY DIRECTOR OF HIGHWAYS, REGION ENGINEER

August 17, 2012
John D. [Signature]
 ENGINEER OF DESIGN AND ENVIRONMENT

August 17, 2012
William R. [Signature]
 DIRECTOR OF HIGHWAYS, CHIEF ENGINEER

**PRINTED BY THE AUTHORITY
 OF THE STATE OF ILLINOIS**

INDEX OF SHEETS

SHEET NO.	DESCRIPTION
1	TITLE SHEET
2	INDEX OF SHEETS, STATE STANDARDS, AND GENERAL NOTES
3	SUMMARY OF QUANTITIES
4	ALIGNMENT PLAN
5	<i>EXIST./PROP. DRAINAGE, EROSION & SEDIMENT CONTROL</i>
6	<i>PROFILE AND DRAINAGE SECTION</i>
7	TRAFFIC CONTROL AND PROTECTION FOR SIDE ROADS, INTERSECTIONS AND DRIVEWAYS (TC-10)
8	ARTERIAL ROAD INFORMATION SIGN (TC-22)

STATE STANDARDS

STANDARD NO.	DESCRIPTION
000001 - 06	STANDARD SYMBOLS, ABBREVIATIONS AND PATTERNS.
280001 - 06	TEMPORARY EROSION CONTROL SYSTEMS.
542301 - 03	PRECAST REINFORCED CONCRETE FLARED END SECTION.
602401 - 03	MANHOLE, TYPE A.
604001 - 03	FRAME AND LIDS TYPE 1.
701101 - 02	OFF-ROAD OPERATIONS, MULTILANE, 15' TO 24" FROM PAVEMENT EDGE.
701301 - 04	LANE CLOSURE, 2L, 2W, SHORT TIME OPERATIONS.
701606 - 08	URBAN LANE CLOSURE, MULTILANE 2W WITH MOUNTABLE MEDIAN.
701801 - 05	LANE CLOSURE MULTILANE 1W OR 2W CROSSWALK OR SIDEWALK CLOSURE.
701901 - 02	TRAFFIC CONTROL DEVICES.

GENERAL NOTES

BEFORE STARTING ANY EXCAVATION, THE CONTRACTOR SHALL CALL "JULIE" AT 1-800-892-0123 OR 811 FOR FIELD LOCATIONS OF BURIED ELECTRIC, TELEPHONE, AND GAS FACILITIES. (48 HOUR NOTIFICATION IS REQUIRED).

THE CONTRACTOR SHALL COORDINATE CONSTRUCTION ACTIVITIES WITH UTILITY COMPANIES AND THE VILLAGE OF BLOOMINGDALE.

THE CONTRACTOR WILL NOT BE ALLOWED TO SET UP A YARD OR FIELD OFFICE ON STATE PROPERTY WITHOUT WRITTEN PERMISSION FROM THE DEPARTMENT.

IT SHALL BE THE CONTRACTOR'S RESPONSIBILITY TO VERIFY ALL DIMENSIONS AND CONDITIONS EXISTING IN THE FIELD PRIOR TO CONSTRUCTION AND ORDERING OF MATERIALS.

THE CONTRACTOR SHALL CONTACT THE DISTRICT ONE TRAFFIC CONTROL SUPERVISOR AT (847)705-4470 A MINIMUM OF 72 HOURS IN ADVANCE OF BEGINNING WORK.

THE CONTRACTOR SHALL BE REQUIRED TO PROVIDE ACCESS TO ADJUTING PROPERTY AT ALL TIMES DURING THE CONSTRUCTION OF THIS PROJECT.

THE RESIDENT ENGINEER SHALL CONTACT DON CHIORUGI, AREA TRAFFIC FIELD ENGINEER, AT 847-715-8416 AT LEAST 2 WEEKS PRIOR TO PLACING PERMANENT PAVEMENT MARKINGS.

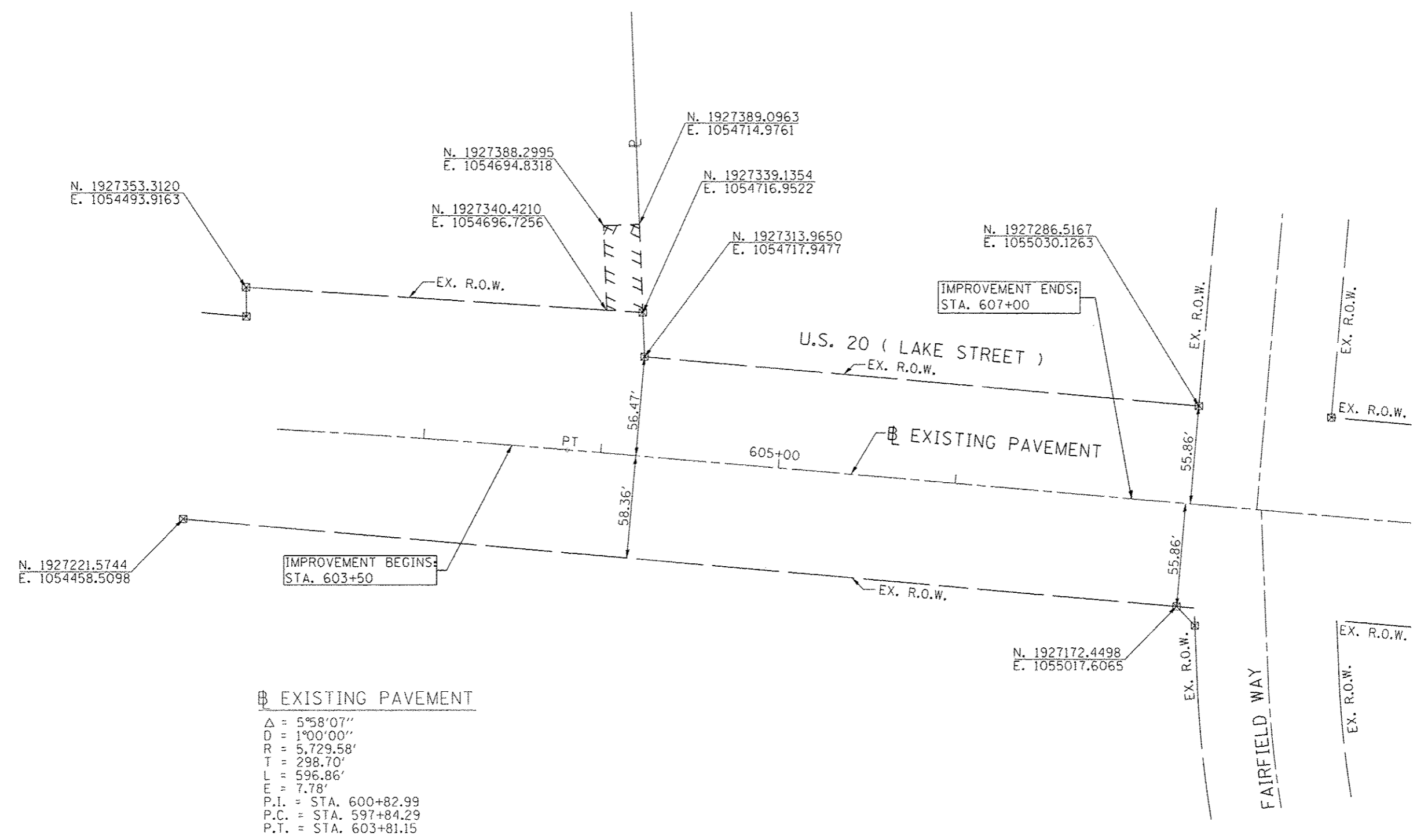
THESE PLANS HAVE BEEN PREPARED FROM NOTES RECEIVED FROM THE BUREAU OF MAINTENANCE (or CONSTRUCTION or BRIDGE INSPECTORS).

EXISTING BROKEN FRAMES AND LIDS SHALL BE REMOVED AND DISPOSED OF BY THE CONTRACTOR AND SHALL BE REPLACED AS DIRECTED BY THE ENGINEER. REPLACEMENT FRAMES AND LIDS WILL BE PAID FOR ACCORDING TO ARTICLE 109.04 OF THE STANDARD SPECIFICATIONS UNLESS A SEPARATE PAY ITEM HAS BEEN PROVIDED.

DO NOT SCALE PLANS FOR CONSTRUCTION DIMENSIONS.

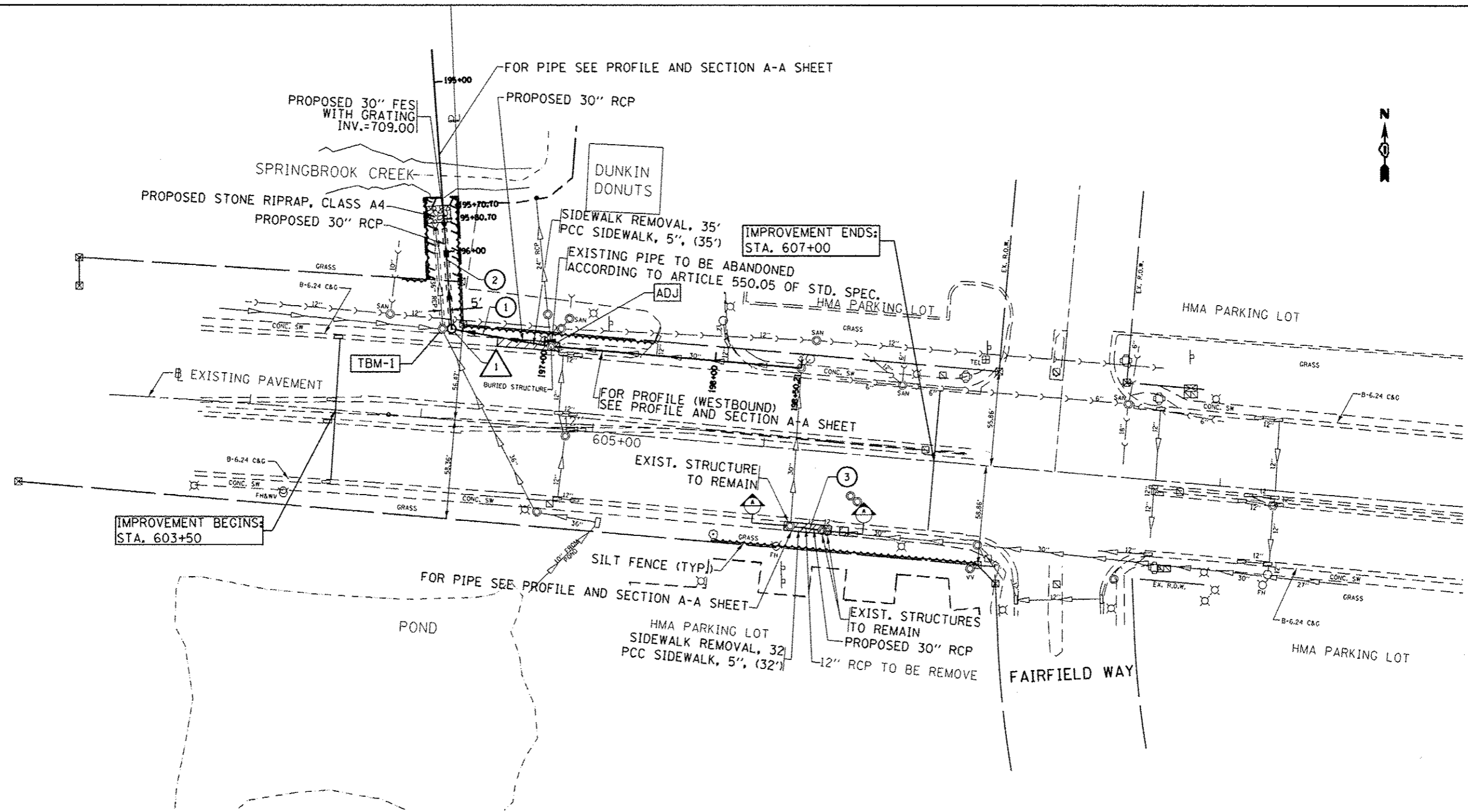
Rev.

FILE NAME *	USER NAME = hmondanah	DESIGNED -	REVISED -	STATE OF ILLINOIS	U.S. 20 - LAKE STREET EAST OF ROSELLE ROAD /BLOOMINGDALE ROAD INDEX OF SHEETS, STATE STANDARDS AND GENERAL NOTES	F.A.P. RTE.	SECTION	COUNTY	TOTAL SHEETS	SHEET NO.	
	2011-shc-plem.dgn	DRAWN -	REVISED -			021	2011-069-T	DUPAGE	8	2	
	PLOT SCALE = 50.0000' / 1" =	CHECKED -	REVISED -			CONTRACT NO. 60P88					
	PLOT DATE = 7/6/2012	DATE -	REVISED -			ILLINOIS FED. AID PROJECT					



□ EXISTING PAVEMENT
 $\Delta = 5^{\circ}58'07''$
 $D = 1^{\circ}00'00''$
 $R = 5,729.58'$
 $T = 298.70'$
 $L = 596.86'$
 $E = 7.78'$
 $P.I. = \text{STA. } 600+82.99$
 $P.C. = \text{STA. } 597+84.29$
 $P.T. = \text{STA. } 603+81.15$

FILE NAME #	USER NAME # hamdanah	DESIGNED -	REVISED -	STATE OF ILLINOIS	U.S. 20 - LAKE STREET EAST OF ROSELLE ROAD / BLOOMINGDALE ROAD ALIGNMENT PLAN		F.A.P. RTE.	SECTION	COUNTY	TOTAL SHEETS	SHEET NO.
MODELNAME#	011-shr-plan.dgn	DRAWN -	REVISED -		021	2011-069-T	DUPAGE	8	4	CONTRACT NO. 60P88	
	PLOT SCALE = 30.0000' / in.	CHECKED -	REVISED -		SHEET OF SHEETS STA. TO STA.		ILLINOIS FED. AID PROJECT				
	PLOT DATE = 7/6/2012	DATE -	REVISED -								



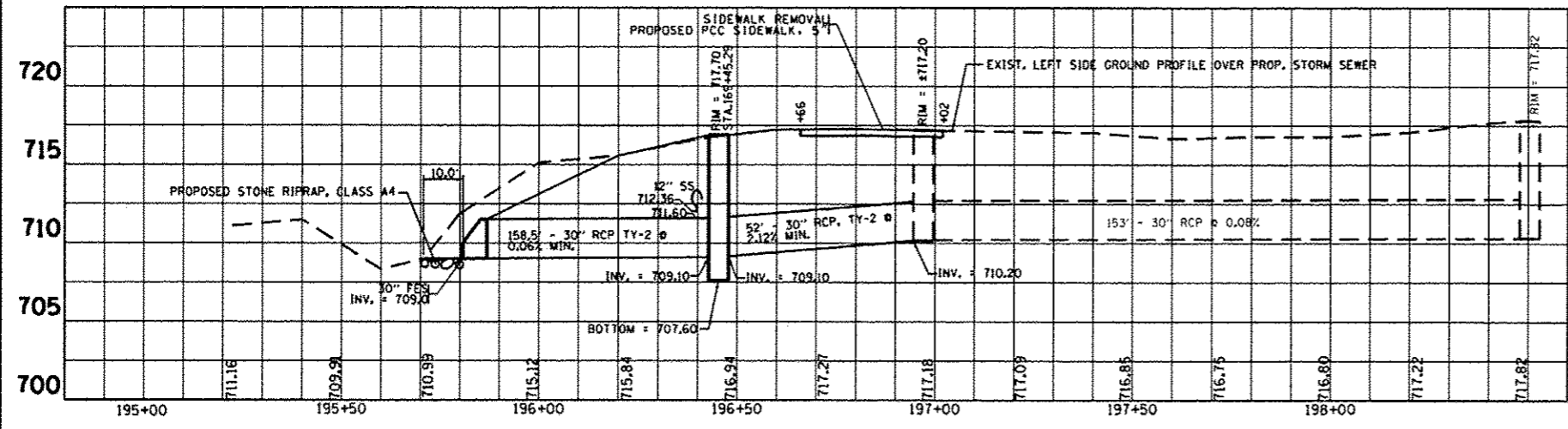
1
 STA. 196+45.29
 MANHOLE TYPE A, 5' DIA.
 W / TY-1 FRAME, CLOSED LID
 T.O.G. 717.70
 INV. 709.10 (E & N)

- 1 PROPOSED 30" STORM SEWER,
CLASS A, TY-2, 52 FT @ 2.12% MIN.
TBF. = 15.4 Cu. Yds.
- 2 PROPOSED 30" STORM SEWER,
CLASS A, TY-2, 158.5 FT @ 0.06% MIN.
- 3 PROPOSED 30" STORM SEWER,
CLASS A, TY-2, 15 FT
TBF. = 3.39 Cu. Yds.

ON THE STORM HANHOLE LIED, LOCATED
145 FEET EAST OF DUNKIN DONUTS DRIVEWAY CENTER LINE

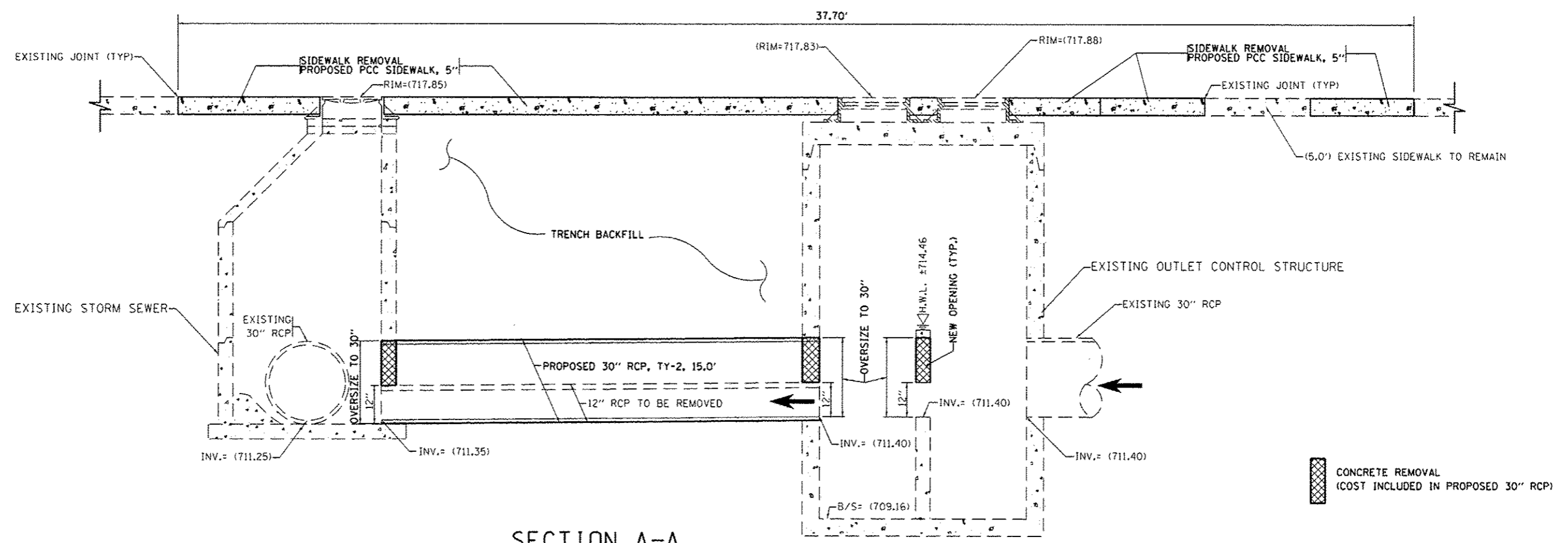
RIM ELEVATION = 717.70

FILE NAME :	USER NAME : hamdanah	DESIGNED -	REVISED -	STATE OF ILLINOIS	U.S. 20 - LAKE STREET EAST OF ROSELLE ROAD /BLOOMINGDALE ROAD EXISTING & PROPOSED DRAINAGE PLAN	F.A.P. RTE.	SECTION	COUNTY	TOTAL SHEETS	SHEET NO.
c:\pwork\pvidat\hamdanah\0273975\010211-shi-plan.dgn	DRAWN -	REVISED -	021			2011-069-T	DuPAGE	8	5	
#MODELNAME#	FLDT SCALE : 60,0000 / in.	CHECKED -	REVISED -			SHEET OF SHEETS STA. TO STA.		ILLINOIS FED. AID PROJECT		
	PLOT DATE : 7/9/2012	DATE -	REVISED -					CONTRACT NO. 60P88		



PROFILE (WESTBOUND)

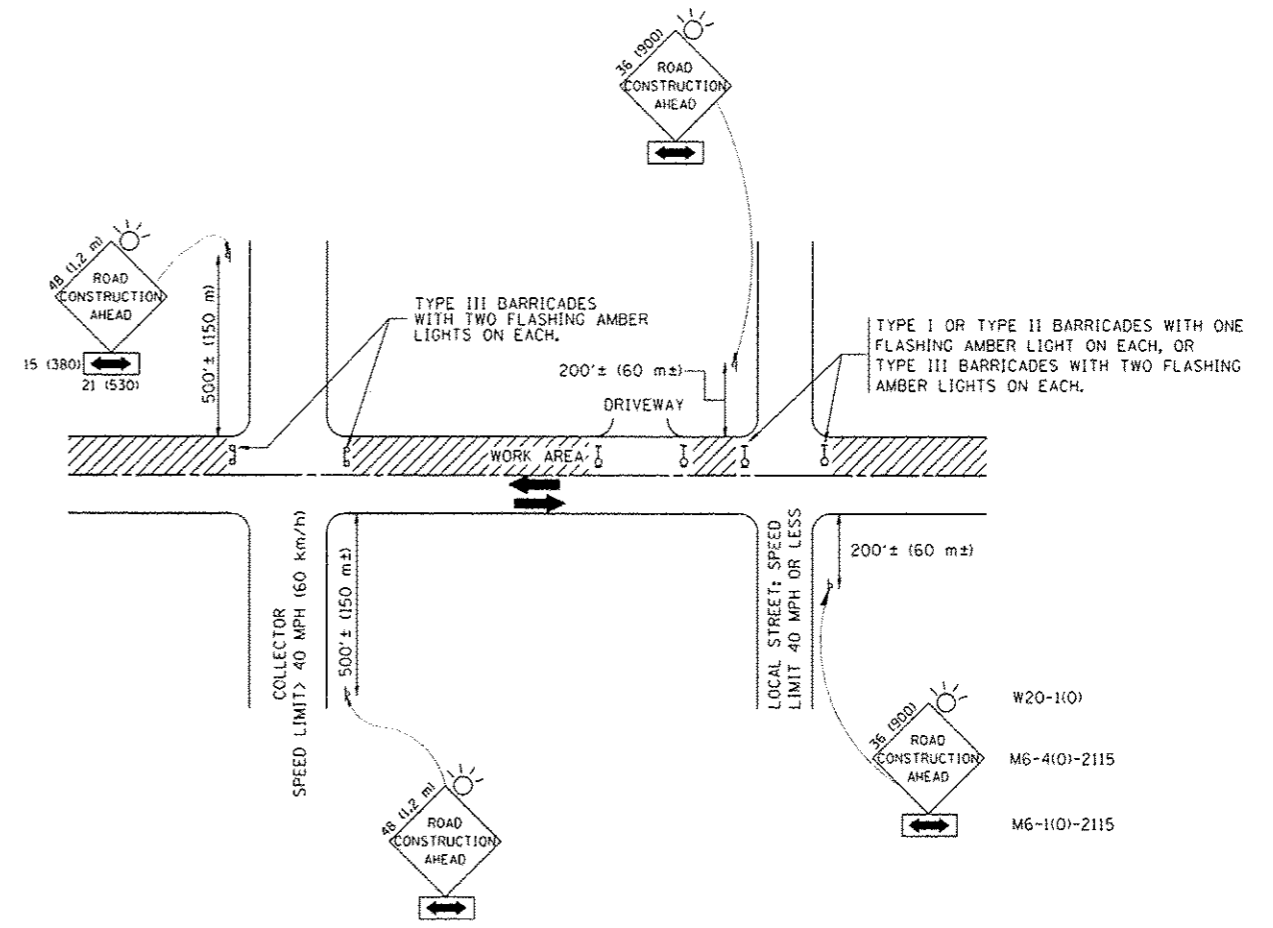
SCALE: V. 1" = 10'
H. 1" = 40'



SECTION A-A

N.T.S.

FILE NAME:	USER NAME: hamdanah	DESIGNED: -	REVISED: -	STATE OF ILLINOIS	U.S. 20 - LAKE STREET EAST OF ROSELLE ROAD / BLOOMINGDALE ROAD PROFILE AND SECTION A-A	F.A.P. RTE.	SECTION	COUNTY	TOTAL SHEETS	SHEET NO.
c:\pwork\pwork\hamdanah\0273975\010611-shs-plan.dgn	DRAWN: -	REVISED: -	021			2011-069-T	DuPAGE	8	6	
#MODELNAME#	CHECKED: -	REVISED: -	CONTRACT NO. 60P88							
PLOT SCALE: 48.0000' / in.	DATE: -	REVISED: -	ILLINOIS FED. AID PROJECT							
PLOT DATE: 7/9/2012				SHEET OF SHEETS	STA. TO STA.					



TRAFFIC CONTROL AND PROTECTION FOR SIDE ROADS, INTERSECTIONS, AND DRIVEWAYS

NOTES:

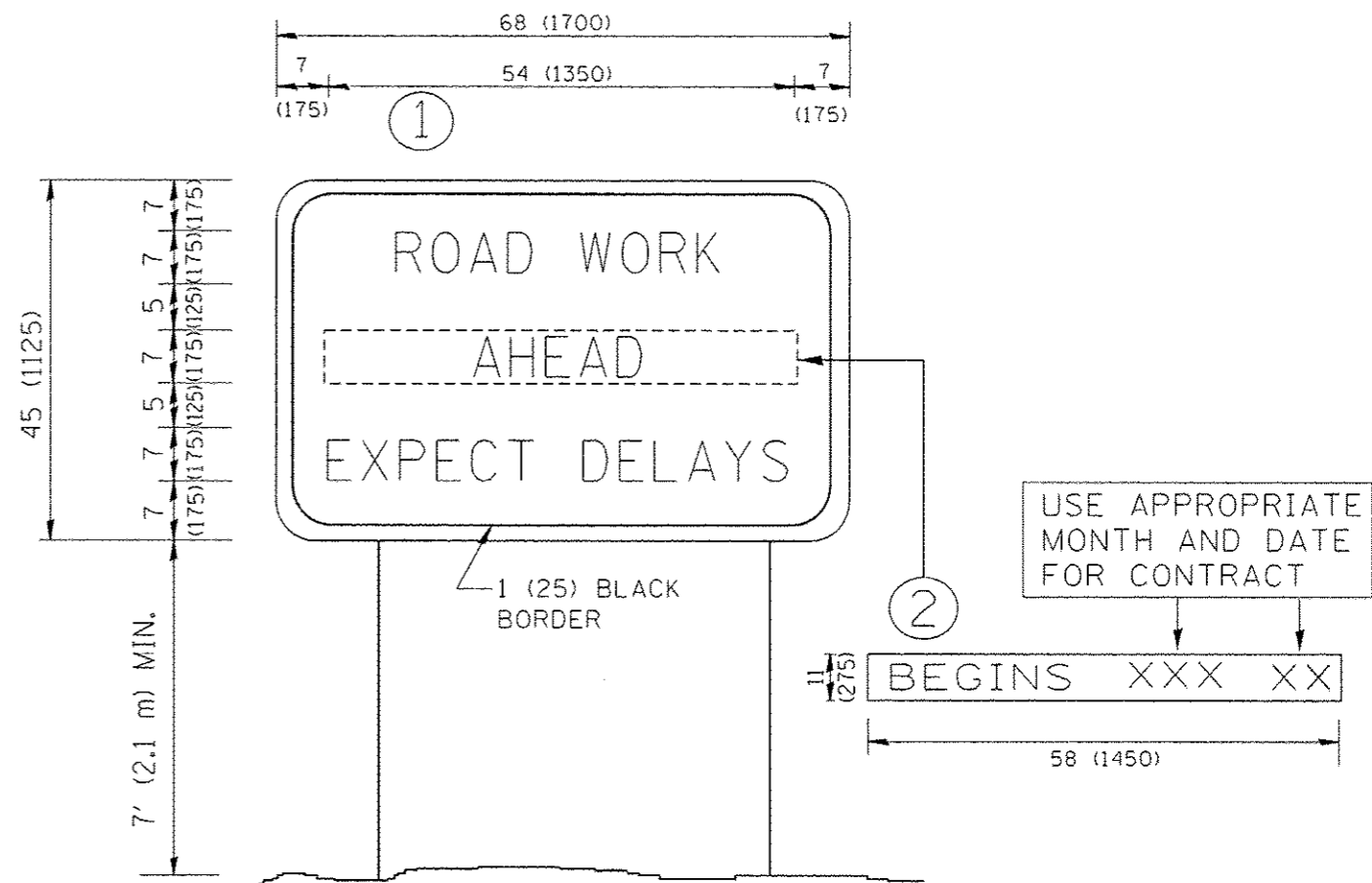
- A. FOR NO LANE RESTRICTION ON THE SIDE ROAD OR DRIVEWAYS
 - 1. SIDE ROAD WITH A SPEED LIMIT OF 40 MPH (60 km/h) OR LESS AS SHOWN ON THE DRAWING AND AS DIRECTED BY THE ENGINEER:
 - a) ONE ROAD CONSTRUCTION AHEAD SIGN 36 x 36 (900x900) WITH A FLASHER AND FLAG MOUNTED ON IT APPROXIMATELY 200' (60 m) IN ADVANCE OF THE MAIN ROUTE.
 - b) THE CLOSED PORTION OF THE MAIN ROUTE SHALL BE PROTECTED BY BLOCKING WITH TYPE I, TYPE II OR TYPE III BARRICADES, 1/3 OF THE CROSS SECTION OF THE CLOSED PORTION.
 - 2. SIDE ROAD WITH A SPEED LIMIT GREATER THAN 40 MPH (60 km/h) AS SHOWN ON THE DRAWING AND AS DIRECTED BY THE ENGINEER:
 - a) ONE ROAD CONSTRUCTION AHEAD SIGN 48 x 48 (1.2 m x 1.2 m) WITH A FLASHER MOUNTED ON IT APPROXIMATELY 500' (150 m) IN ADVANCE OF THE MAIN ROUTE.
 - b) THE CLOSED PORTION OF THE MAIN ROUTE SHALL BE PROTECTED BY BLOCKING WITH TYPE III BARRICADES, 1/2 OF THE CROSS SECTION OF THE CLOSED PORTION.
 - 3. WHEN THE SIDE ROAD LIES BETWEEN THE BEGINNING OF THE MAINLINE SIGNING AND THE WORK ZONE, A SINGLE HEADED ARROW (M6-1) SHALL BE USED IN LIEU OF THE DOUBLE HEADED ARROW (M6-4).
- B. FOR A LANE CLOSURE ON A SIDE ROAD OR DRIVEWAY:
 - USE APPLICABLE PORTIONS OF THE TYPICAL APPLICATION OF TRAFFIC CONTROL DEVICES (STD. 701501, STD. 701606 OR THE APPROPRIATE STANDARD). THE SPACING OF SIGNS AND BARRICADES SHALL BE ADJUSTED FOR FIELD CONDITIONS AS DIRECTED BY THE ENGINEER. THE DIRECTIONAL ARROW SHALL BE COVERED OR REMOVED WHEN NO LONGER CONSISTENT WITH THE SIDE ROAD LANE CLOSURE.
- C. ADVANCE WARNING SIGNS ARE TO BE OMITTED ON DRIVEWAY UNLESS OTHERWISE NOTED.
- D. THE TRAFFIC CONTROL AND PROTECTION FOR SIDE ROADS, INTERSECTIONS, AND DRIVEWAYS SHALL BE INCIDENTAL TO THE COST OF SPECIFIED TRAFFIC CONTROL STANDARDS OR ITEMS.

All dimensions are in millimeters (inches) unless otherwise shown.

FILE NAME *	USER NAME * handanah	DESIGNED - LHA	REVISED - J. OBERLE 10-18-95
c:\pwwork\pedit\handanah\d8273975\016	2011-sht-plan.dgn	DRAWN -	REVISED - A. HOUSEH 03-06-96
	PLOT SCALE = 49.9999 / 1 in.	CHECKED -	REVISED - A. HOUSEH 10-15-96
	PLOT DATE = 7/6/2012	DATE - 06-89	REVISED - T. RAMMACHER 01-06-00

STATE OF ILLINOIS
DEPARTMENT OF TRANSPORTATION

TRAFFIC CONTROL AND PROTECTION FOR SIDE ROADS, INTERSECTIONS, AND DRIVEWAYS		F.A.P. RTE.	SECTION	COUNTY	TOTAL SHEETS	SHEET NO.
SCALE: NONE	SHEET NO. 1 OF 1 SHEETS	021	2011-069-T	DuPAGE	8	7
		TC-10		CONTRACT NO. 60P88		
		FED. ROAD DIST. NO. 1 ILLINOIS FED. AID PROJECT				



NOTES:

1. USE BLACK LETTERING ON ORANGE BACKGROUND.
2. ERECT SIGNS IN ADVANCE OF THE LOCATION FOR THE "ROAD CONSTRUCTION AHEAD" SIGN AT LOCATIONS AS DIRECTED BY THE ENGINEER.
3. ERECT SIGN ① WITH INSTALLED PANEL ② ONE WEEK PRIOR TO THE START OF CONSTRUCTION.
4. REMOVE PANEL ② SOON AFTER THE START OF CONSTRUCTION.
5. SEE SPECIAL PROVISION FOR "TEMPORARY INFORMATION SIGNING" FOR ADDITIONAL INFORMATION.
6. ONE SIGN ASSEMBLY EQUALS 25.70 SQ. FT. (2.3 SQ. M.)
7. SHALL BE PAID FOR AS TEMPORARY INFORMATION SIGNING.

ALL DIMENSIONS ARE IN INCHES (MILLIMETERS) UNLESS OTHERWISE SHOWN.

FILE NAME =	USER NAME = hmdaneh	DESIGNED -	REVISED - R. MIRS 09-15-97	STATE OF ILLINOIS DEPARTMENT OF TRANSPORTATION	ARTERIAL ROAD INFORMATION SIGN		F.A.P. RTE.	SECTION	COUNTY	TOTAL SHEETS	SHEET NO.		
c:\pwwork\pridot\hmdaneh\08273975\016	EGJ-ehc-pln.dgn	DRAWN -	REVISED - R. MIRS 12-11-97		SCALE: NONE	SHEET NO. 1 OF 1 SHEETS	STA.	TO STA.	021	2011-069-T	DUPAGE	8	8
	PLOT SCALE = 50.0000' / 1"	CHECKED -	REVISED - T. RAMMACHER 02-02-99						TC-22		CONTRACT NO. 60P88		
	PLOT DATE = 7/6/2012	DATE -	REVISED - C. JUCIUS 01-31-07						FED. ROAD DIST. NO. 1 ILLINOIS FED. AID PROJECT				