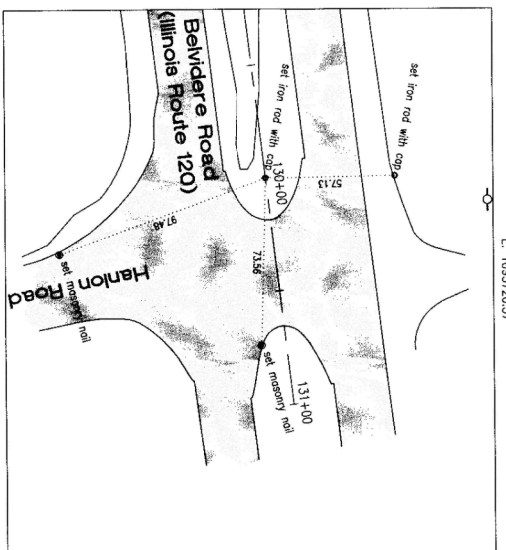
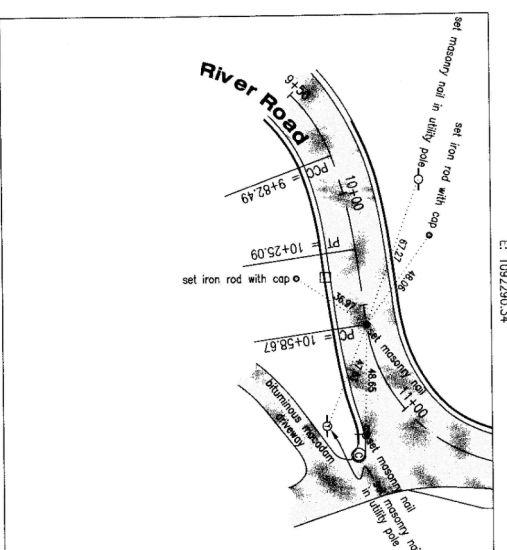


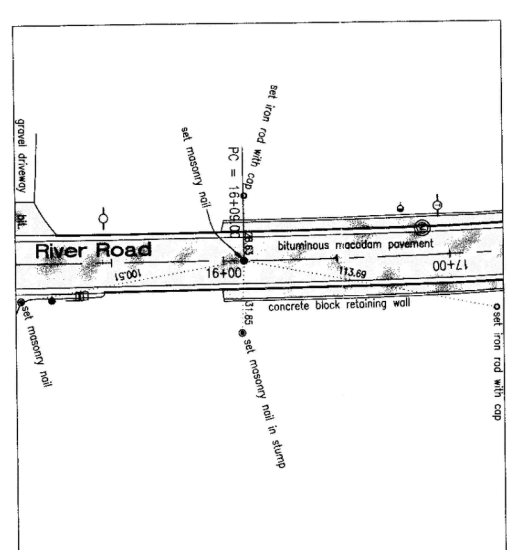
S1A_101+00.00
N: 2068198.00
E: 1092641.71



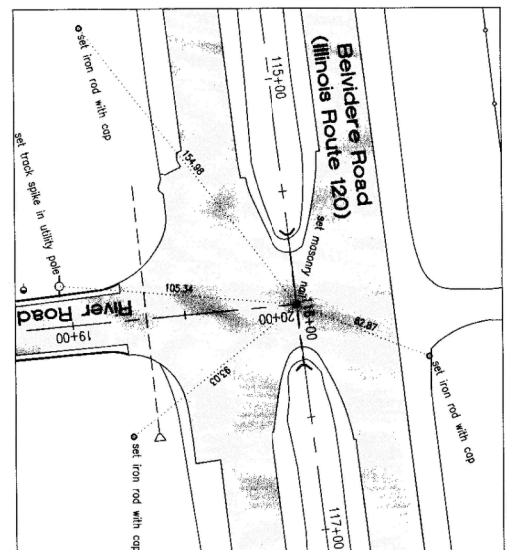
S1A_130+00.00
N: 2068547.49
E: 1092720.57



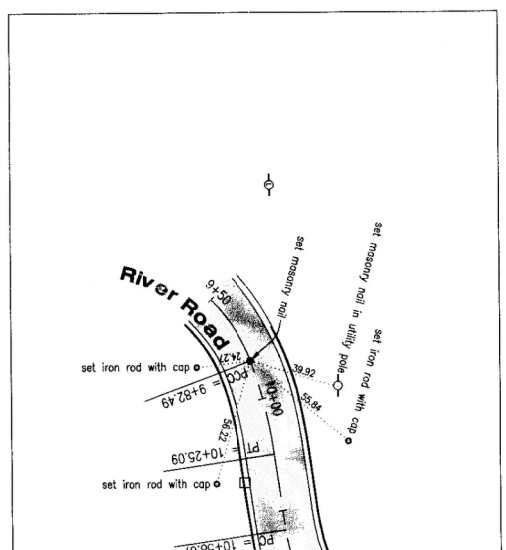
S1A_10+58.62
N: 2067471.54
E: 1092280.54



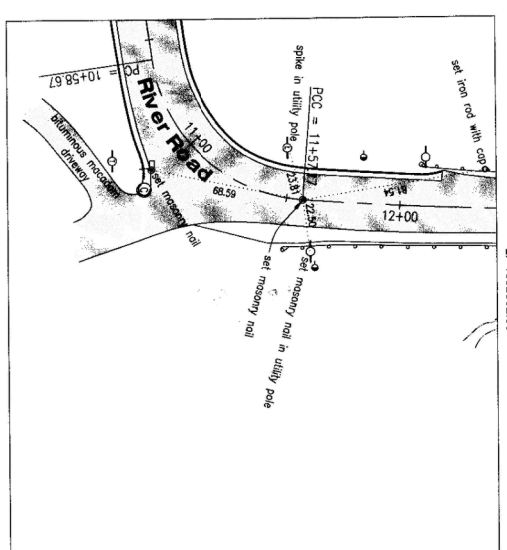
S1A_18+09.00
N: 2067988.60
E: 1092356.90



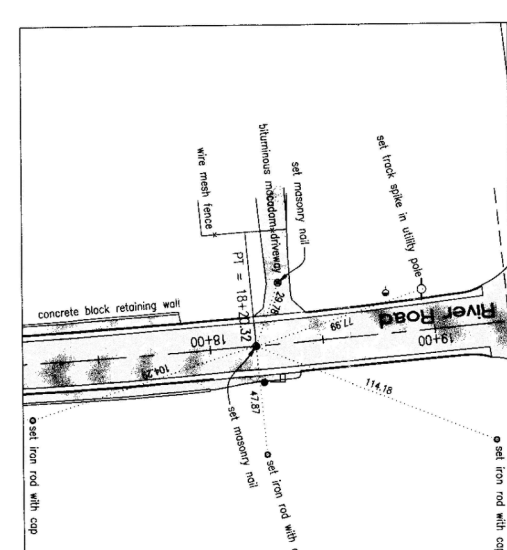
S1A_116+00.00 (Belvidere Road)
S1A_20+00.00 (River Road)
N: 2068179.57
E: 1092330.68



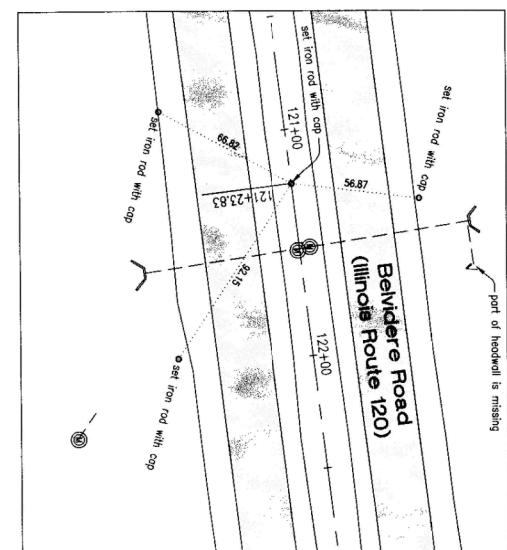
S1A_9+82.49
N: 2067456.42
E: 1092215.86



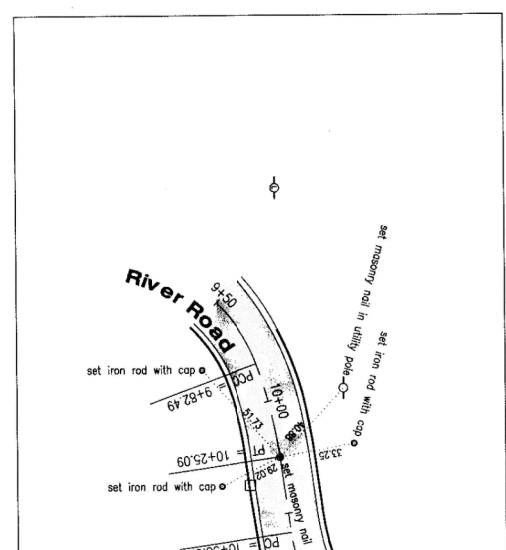
S1A_11+57.17
N: 2068237.32
E: 1092352.85



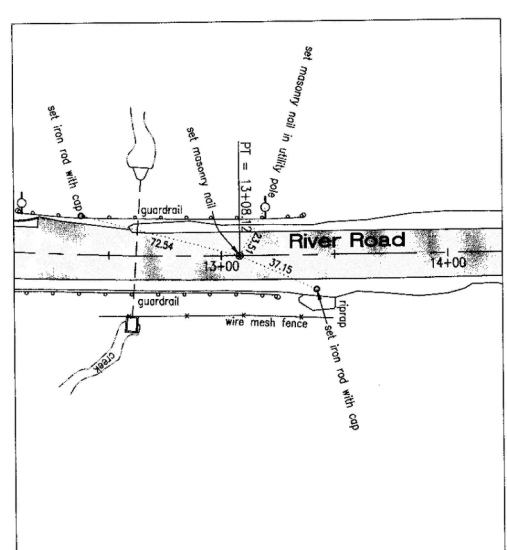
S1A_18+20.32
N: 2068200.62
E: 1092346.82



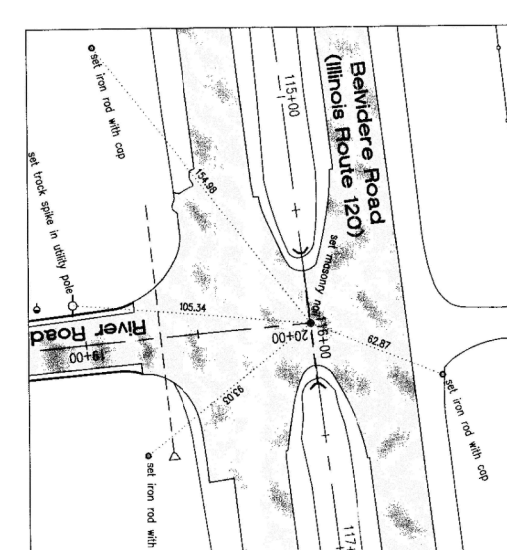
S1A_121+23.83
N: 2068442.98
E: 1092850.66



S1A_10+25.09
N: 2067468.82
E: 1092257.08



S1A_13+08.12
N: 2067660.72
E: 1092358.54



S1A_20+00.00 (River Road)
S1A_116+00.00 (Belvidere Road)
N: 2068179.57
E: 1092330.68

FILE NAME =	USER NAME = pencepl	DESIGNED -	REVISED -	STATE OF ILLINOIS DEPARTMENT OF TRANSPORTATION	ALIGNMENT TIES			F.A.P. RT.E.	SECTION	COUNTY	TOTAL SHEETS	SHEET NO.	
Default	Default	DRAWN -	REVISED -		ILLINOIS ROUTE 120 AT RIVER RD.			342	2011-220-N	LAKE	41	11	
		CHECKED -	REVISED -		SCALE: 1"=100'								
		DATE -	REVISED -		SHEET OF SHEETS STA. TO STA.								
												CONTRACT NO. 60R59	
												ILLINOIS FED. AID PROJECT	