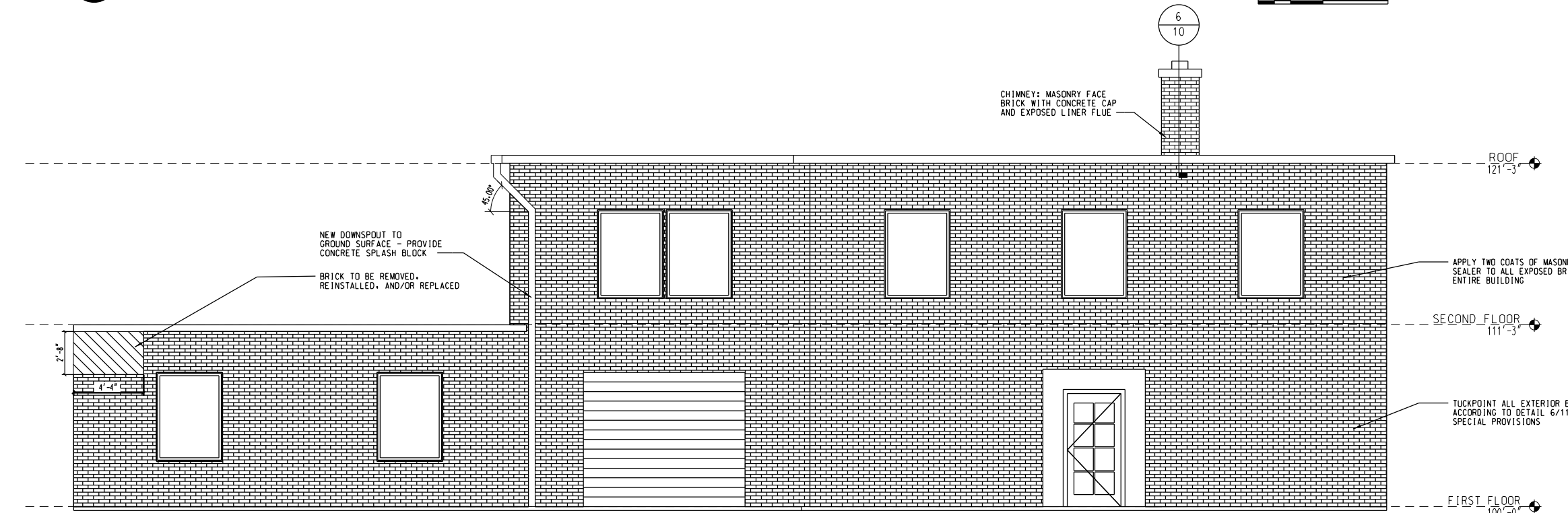


2 EAST ELEVATION
1/4" = 1'-0"



1 WEST ELEVATION
1/4" = 1'-0"



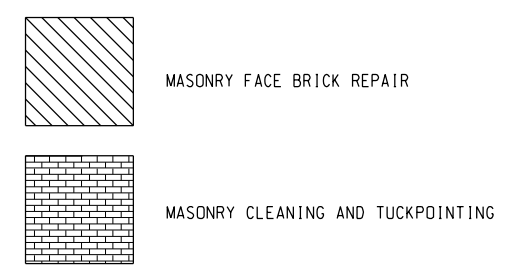
EAST ELEVATION



WEST ELEVATION



WEST ELEVATION



NOTE: BILL OF MATERIALS IS SHOWN ON SHEETS 7. FOR WORK DEPICTED ON SHEETS 7 AND 8.



USER NAME =	DESIGNED - LOF	REVISED
	DRAWN - BRK	REVISED
PLOT SCALE =	CHECKED - EJM	REVISED
PLOT DATE = 06-28-2012	APPROVED - 06628-2012	REVISED

STATE OF ILLINOIS
DEPARTMENT OF
TRANSPORTATION

EXTERIOR ELEVATIONS

Scale SHEET NO. 8 OF 11 SHEETS Station From Station To

F.A.P. RTE.	SECTION	COUNTY	TOTAL SHEETS	SHEET NO.
	2012-0451	WILL	11	8
CONTRACT NO. 60V37			ILLINOIS FED. AID PROJECT	