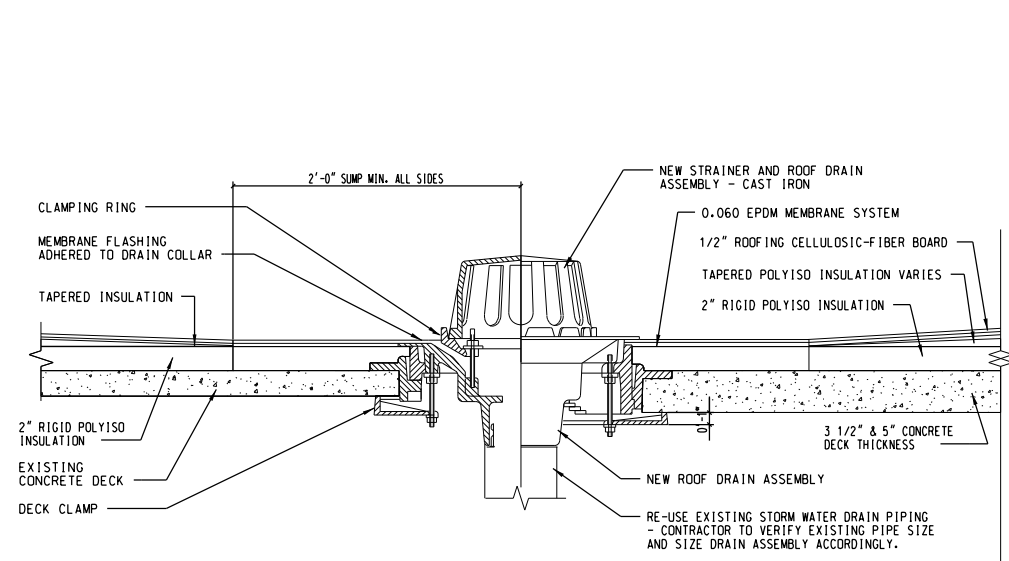


- 0.60 EPDM MEMBRANE - EXTEND OVER ROOF EDGE ONTO FASCIA COUNTER-FLASHING METAL FASCIA UNDER METAL GUTTER.
- 2" POLYISOCYANURATE ROOF INSULATION - ADHERE TO EXISTING CONCRETE ROOF SLAB.
- ROOFING SYSTEM SEALANT CONTINUOUS - PER MANUFACTURER REQUIREMENTS.
- TAPERED POLYISOCYANURATE ROOF INSULATION - ADHERE TO BASE SHEET PER MANUFACTURER'S REQUIREMENTS.
- 1/2" ROOFING CELLULOSIC-FIBER BOARD INSULATION - ADHERE TO TAPERED INSULATION PER MANUFACTURER'S REQUIREMENTS.
- #1 - 2 x 6 TREATED WOOD DECK PLATE - CONTINUOUS ALONG ROOF EDGE - ANCHOR INTO CONCRETE ROOF DECK WITH 3 1/4" x 1/4" 410 STAINLESS STEEL CONCRETE SCREW @ 12" O.C. MINIMUM AND INTO 2 x 6 WOOD FASCIA WITH #10 x 3 1/4" AUGER POINT 316 STAINLESS STEEL WOOD STAR DRIVE SCREW @ 12" O.C.
- #10 x 3 1/4" AUGER POINT 316 STAINLESS STEEL WOOD STAR DRIVE SCREW - TYPICAL SCREW FOR ANCHORING ALL WOOD INTO ADJACENT WOOD SUBSTRATES.
- 0.040 PREFINISHED ALUMINUM BREAKMETAL ROOF EDGE FLASHING - EXTEND 5" ONTO 2 x 6 ROOF EDGE SUBSTRATE - ANCHOR INTO WOOD SUBSTRATE WITH #8 x 1 1/4" STAINLESS STEEL SCREWS AT 12" O.C.
- .0125 ALUMINUM GUTTER BRACKET - ANCHOR BACKSIDE INTO 2 x 6 TREATED WOOD DECK PLATE @ 24" O.C. AND RIVET FRONT SIDE INTO FACE OF GUTTER RETURN WITH STAINLESS STEEL RIVETS.
- .050 PREFINISHED ALUMINUM GUTTER - CONTINUOUS ALONG NORTH ROOF EDGE OF UPPER ROOF - FLASHING UNDER AND ANCHORED TO CONTINUOUS TREATED WOOD SUBSTRATE @ 12" O.C.
- #1 - 2 x 6 TREATED WOOD FASCIA - CONTINUOUS ALONG ROOF EDGE FASTENED TO EDGE OF CONCRETE ROOF DECK WITH 3 1/4" x 1/4" 410 STAINLESS STEEL CONCRETE SCREW @ 12" O.C.
- .040 PREFINISHED ALUMINUM BREAKMETAL FASCIA AND SOFFIT COVER - FLASH UNDER GUTTER CONTINUOUS ALONG NORTH ROOF EDGE ON UPPER ROOF - ANCHOR INTO WOOD SUBSTRATE.
- .040 PREFINISHED ALUMINUM BREAKMETAL "J" MOLD TRIM - CONTINUOUS ALONG NORTH ROOF EDGE ON UPPER ROOF - ANCHOR INTO 2 x 6 WOOD SUBSTRATE WITH #8 x 1 1/4" STAINLESS STEEL SCREW @ 12" O.C.
- EXISTING CONCRETE ROOF DECK.
- EXISTING MASONRY FACE BRICK.
- .060 EPDM STRIP-FLASHING PER MANUFACTURER'S REQUIREMENTS.
- 4" x 6" .050 PREFINISHED ALUMINUM DOWNSPOUT - ANCHOR TO BUILDING WITH .125 ALUMINUM BRACKETS PLACED WITH NOT MORE THAN 5 FEET BETWEEN.

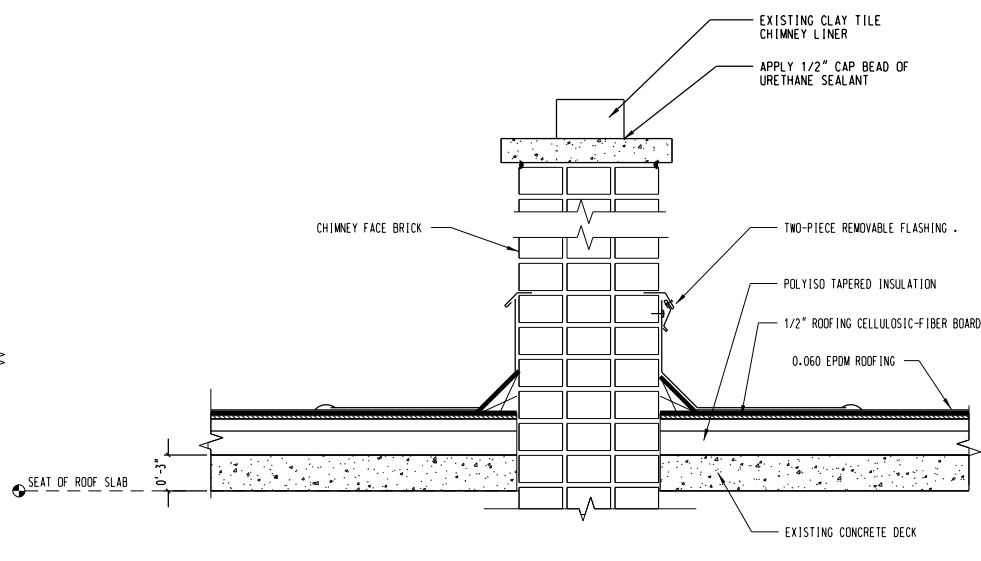
7 ROOF EDGE/GUTTER/DOWNSPOUT DETAIL
1 1/2" = 1'-0"

8 DOWNSPOUT STRAP DETAIL - TYP.
3" = 1'-0"

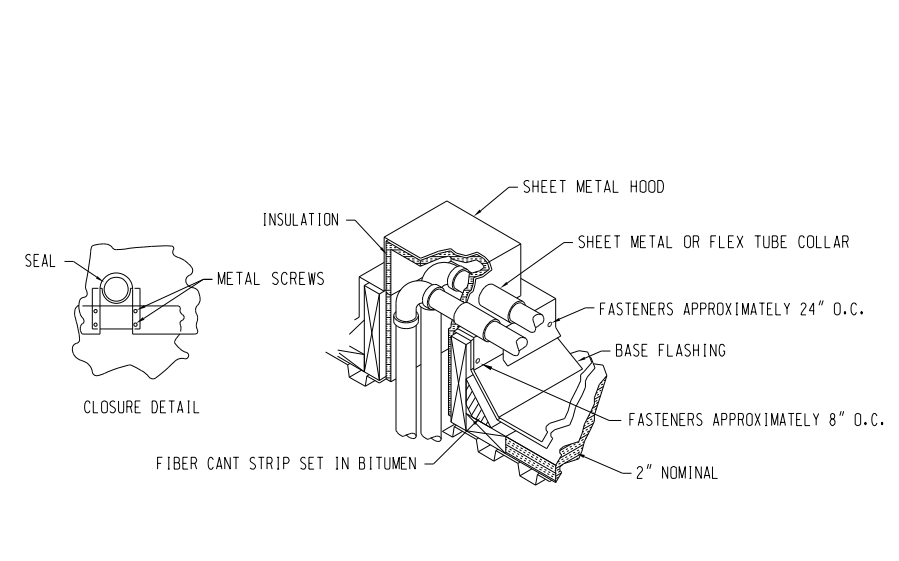
9 SHEETMETAL SPLICE DETAIL - TYP.
12" = 1'-0"



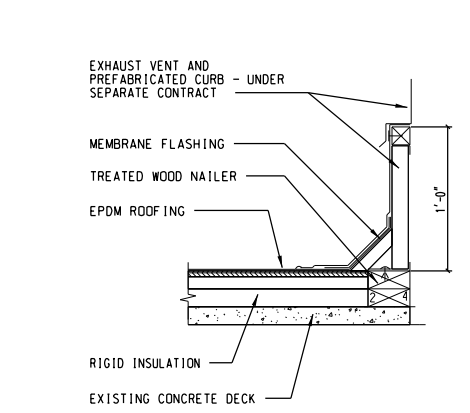
5 ROOF DRAIN - TYPICAL
1 1/2" = 1'-0"



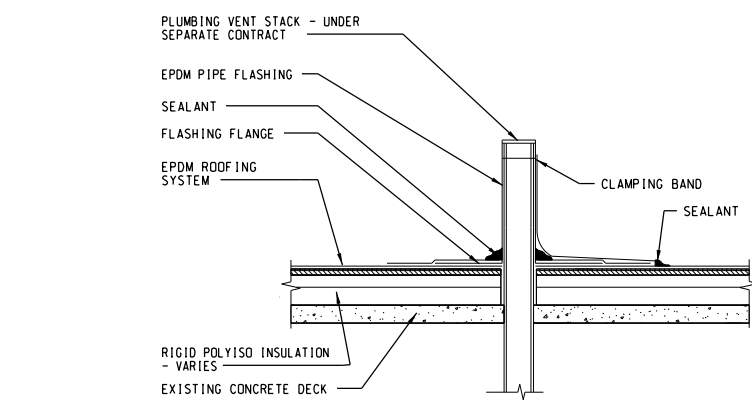
6 CHIMNEY FLASHING DETAIL - TYPICAL
1 1/2" = 1'-0"



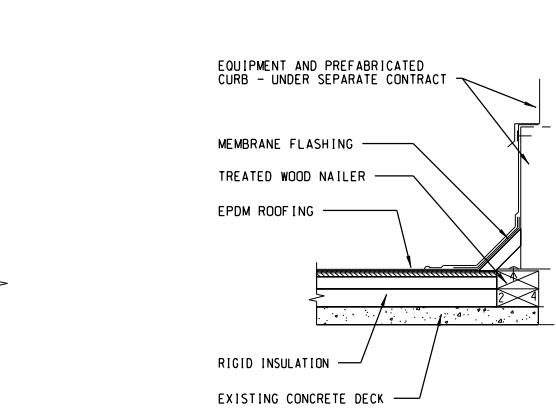
10 PIPE CURB DETAIL
NOT TO SCALE



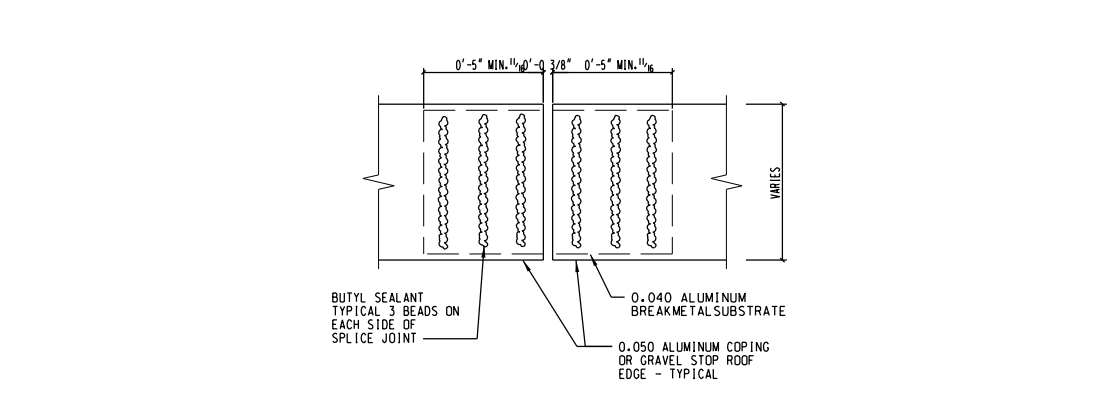
1 EXHAUST CURB FLASHING
1 1/2" = 1'-0"



2 VENT PIPE FLASHING (PRE-FAB)
1 1/2" = 1'-0"



3 EQUIPMENT CURB FLASHING
1 1/2" = 1'-0"



4 COPING/GRAVEL STOP SPLICE DETAIL - TYP.
3" = 1'-0"



USER NAME =	DESIGNED - LOF	REVISED
PLOT SCALE =	DRAWN - BRK	REVISED
PLOT DATE = 06-28-2012	CHECKED - EJM	REVISED
	APPROVED - GLC	REVISED

STATE OF ILLINOIS
DEPARTMENT OF
TRANSPORTATION

NEW WORK DETAILS

Scale SHEET NO. 10 OF 11 SHEETS Station From Station To

F.A.P. RTE.	SECTION	COUNTY	TOTAL SHEETS	SHEET NO.
	2012-0451	WILL	11	10
CONTRACT NO. 60V37			ILLINOIS FED. AID PROJECT	