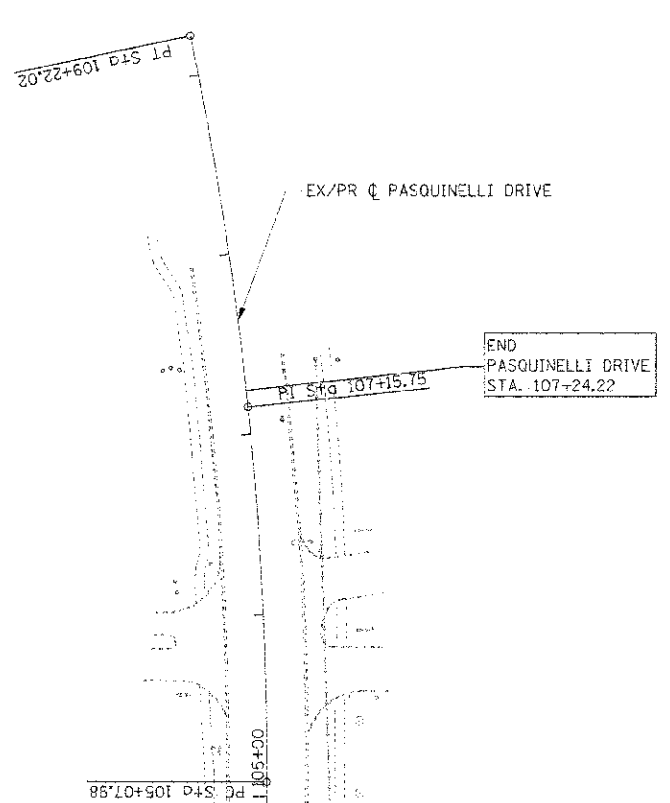
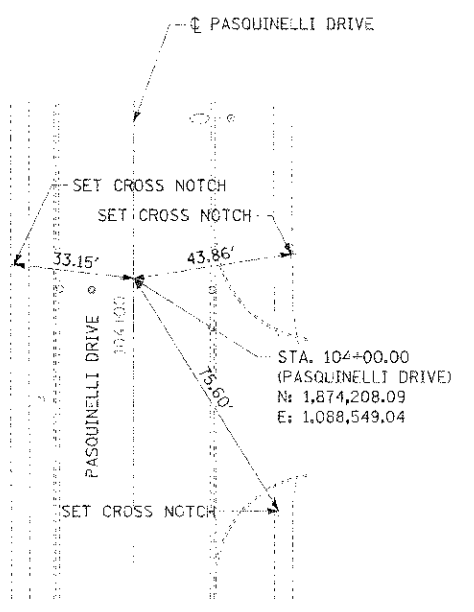
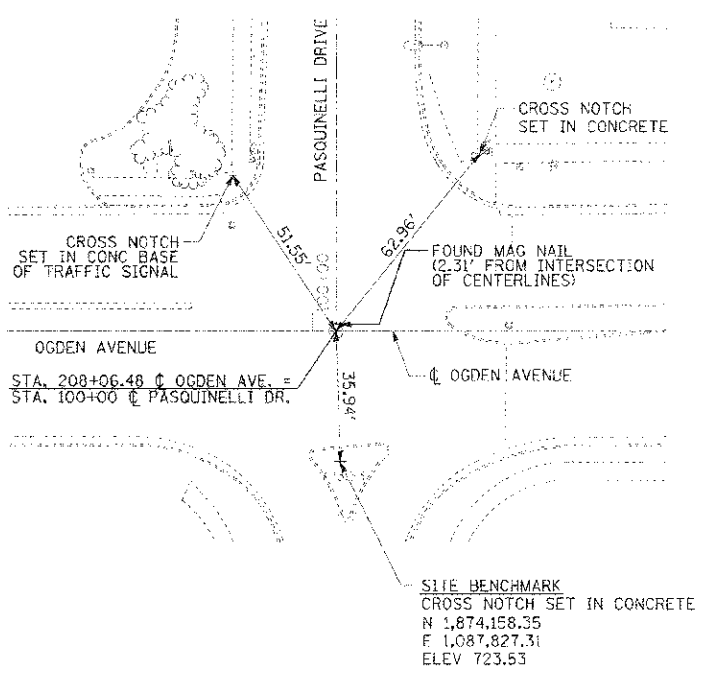
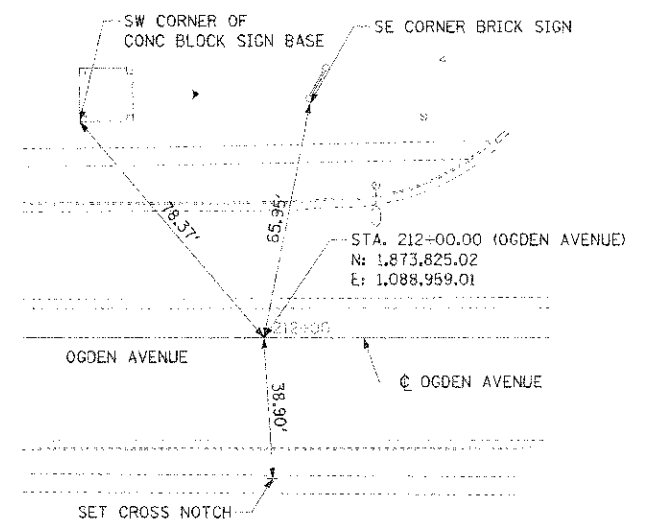
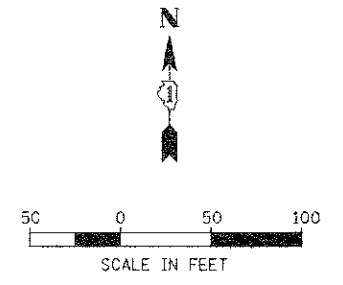
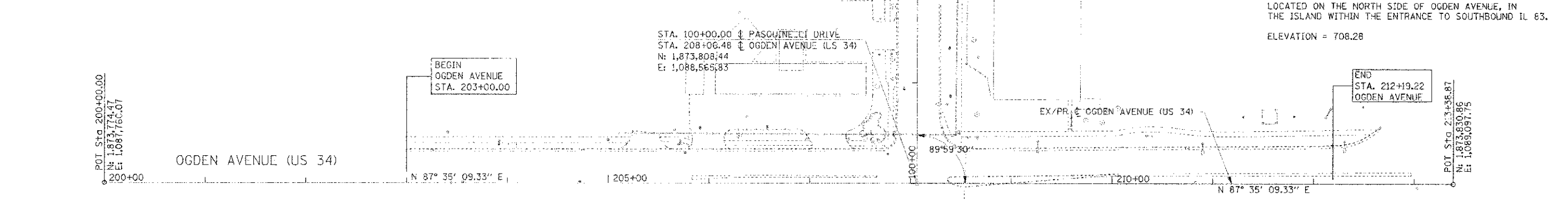


PROJECT: PASQUINELLI DRIVE RECONSTRUCTION
 SHEET: ALIGNMENT, TIES AND BENCHMARKS
 DATE: 03/28/11

DESIGNED BY: JMT
 DRAWN BY: JAB
 CHECKED BY: MAP
 DATE: 03/28/11



EXIST. CURVE PASQ-1
 P.I. STA. = 107+15.75
 N: 1,874,523.56
 E: 1,088,535.79
 $\Delta = 11^\circ 53' 27''$ (LT)
 $D = 2^\circ 52' 19''$
 $R = 1,995.00'$
 $T = 207.76'$
 $L = 414.03'$
 $E = 10.79'$
 $e = N.C.$
 $T.R. = N/A$
 $S.E. RUN = N/A$
 P.C. STA. = 105+07.98
 N: 1,874,315.98
 E: 1,088,544.51
 P.T. STA. = 109+22.02
 N: 1,874,724.88
 E: 1,088,484.48



AREA BENCHMARK/PROJECT DATUM:
 DUPAGE COUNTY BENCHMARK (BM #06N02001)
 A BRONZE DISK MONUMENT ESTABLISHED IN CONCRETE
 BASE OF TRAFFIC SIGNAL CONTROL LIGHT, STAMPED
 "DU PAGE COUNTY MAPS AND PLATS"
 LOCATED ON THE NORTH SIDE OF OGDEN AVENUE, IN
 THE ISLAND WITHIN THE ENTRANCE TO SOUTHBOUND IL 83.
 ELEVATION = 708.28

Burns & McDonnell
 1411 OGDEN BLVD, STE 400
 DOWNERS GROVE, IL 60515
 PHONE: (630) 724-3000
 FAX: (630) 724-3200
 WWW.BURNSMCD.COM

USER NAME = ANGER#
 FILE NAME = 03111#
 PLOT SCALE = 03111#
 PLOT DATE = 03/28/11

DESIGNED - JMT
 DRAWN - JAB
 CHECKED - MAP
 DATE - 03/28/11

STATE OF ILLINOIS
 DEPARTMENT OF TRANSPORTATION

PASQUINELLI DRIVE RECONSTRUCTION
 ALIGNMENT, TIES AND BENCHMARKS

P.A.U. SITE: 3002	SECTION: 00-00083-00-PV	COUNTY: DUPAGE	TOTAL SHEETS: 73	SHEET NO.: 12
CONTRACT NO. 63579			ILLINOIS FED. AID PROJECT	

SCALE: 1/50 SHEET NO. 1 OF 1 SHEETS: STA. TO STA.