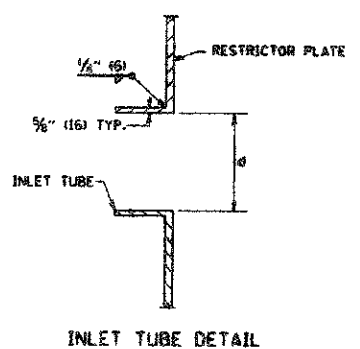
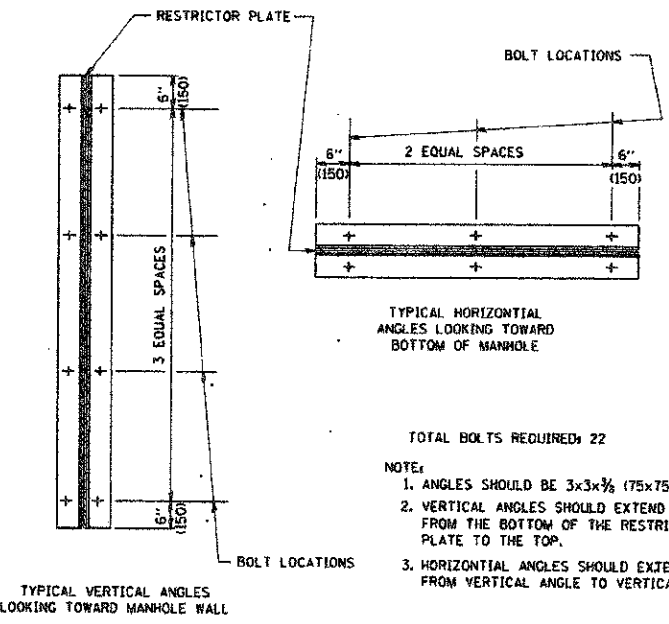


- NOTES:
1. ALL STEEL ANGLES AND PLATES TO BE GALVANIZED AFTER FABRICATION.
 2. ALL RESTRICTOR PLATES, ANGLES AND HARDWARE TO BE INCLUDED IN THE COST OF THE MANHOLE.
 3. BASIS OF PAYMENT: "MANHOLES TYPE A, 6 FT. (1.8 m) DIAMETER, TYPE I FRAME, CLOSED LID, RESTRICTOR PLATE" EACH



STATION	MANHOLE DIAMETER	FRAME AND GRATE	RESTRICTOR TYPE	INSIDE RESTRICTOR TYPE DIAMETER In. (mm) (d)	INVERT OF RESTRICTOR TYPE	ELEVATION OF TOP OF PLATE OVERFLOW
210+80	6 feet	T1, CL	2	8	714.11	716.0
210+95	6 feet	T1, CL	2	8	706.09	714.0
212+10	6 feet	T1, CL	2	4	705.58	709.5



RESTRICTOR TYPE					
1	2	3	4	5	6
RE-ENTRANT TUBE	SHARP EDGED	SQUARE EDGED	RE-ENTRANT TUBE	SQUARE EDGED	ROUNDED
LENGTH 1/2 TO 1 DIA.		STREAM CLEARS SIDES	LENGTH 2-1/2 DIA.	LENGTH 2-1/2 DIA.	
C=.52	C=.61	C=.61	C=.75	C=.82	C=.98

VALUES OF "C" FOR CIRCULAR AND SQUARE ORIFICES

- TOTAL BOLTS REQUIRED: 22
- NOTE:
1. ANGLES SHOULD BE 3x3x3/8 (75x75x75)
 2. VERTICAL ANGLES SHOULD EXTEND FROM THE BOTTOM OF THE RESTRICTOR PLATE TO THE TOP.
 3. HORIZONTAL ANGLES SHOULD EXTEND FROM VERTICAL ANGLE TO VERTICAL ANGLE.

STEEL ANGLE BOLTING DETAILS

ALL DIMENSIONS ARE IN INCHES (MILLIMETERS) UNLESS OTHERWISE SHOWN.

FILE NAME =	USER NAME = gajisnabt	DESIGNED - R. SHAH	REVISED - R. SHAH 10-25-94
W:\chaitan\22x34\bol2.dgn		DRAWN -	REVISED - E. GOMEZ 08-28-00
	PLOT SCALE = 5/8" = 1' / 1"	CHECKED -	REVISED - M. GOMEZ 01-08-01
	PLOT DATE = 1/4/2009	DATE - 09-09-94	REVISED -

STATE OF ILLINOIS
DEPARTMENT OF TRANSPORTATION

MANHOLE WITH
RESTRICTOR PLATE

F.A. RTE.	SECTION	COUNTY	TOTAL SHEETS	SHEET NO.
3002	00-00083-00-PV	DUPAGE	73	46
BD600-04	(BD-12)	CONTRACT NO.	63579	
FED. ROAD DIST. NO. 1 ILLINOIS FED. AID PROJECT				

SCALE: NONE SHEET NO. 1 OF 1 SHEETS STA. TO STA.