

CUR C-ALLEY1

PI STA = 13+28.04
 $\Delta = 45^\circ 35' 26''$ (LT)
 R = 29.00'
 T = 12.19'
 L = 23.08'
 E = 2.46'
 PC STA = 13+15.85
 PT STA = 13+38.93
 BACK BRG = S 0° 00' 11.00" W
 AHEAD BRG = S 45° 35' 15.30" E

CUR C-ALLEY2

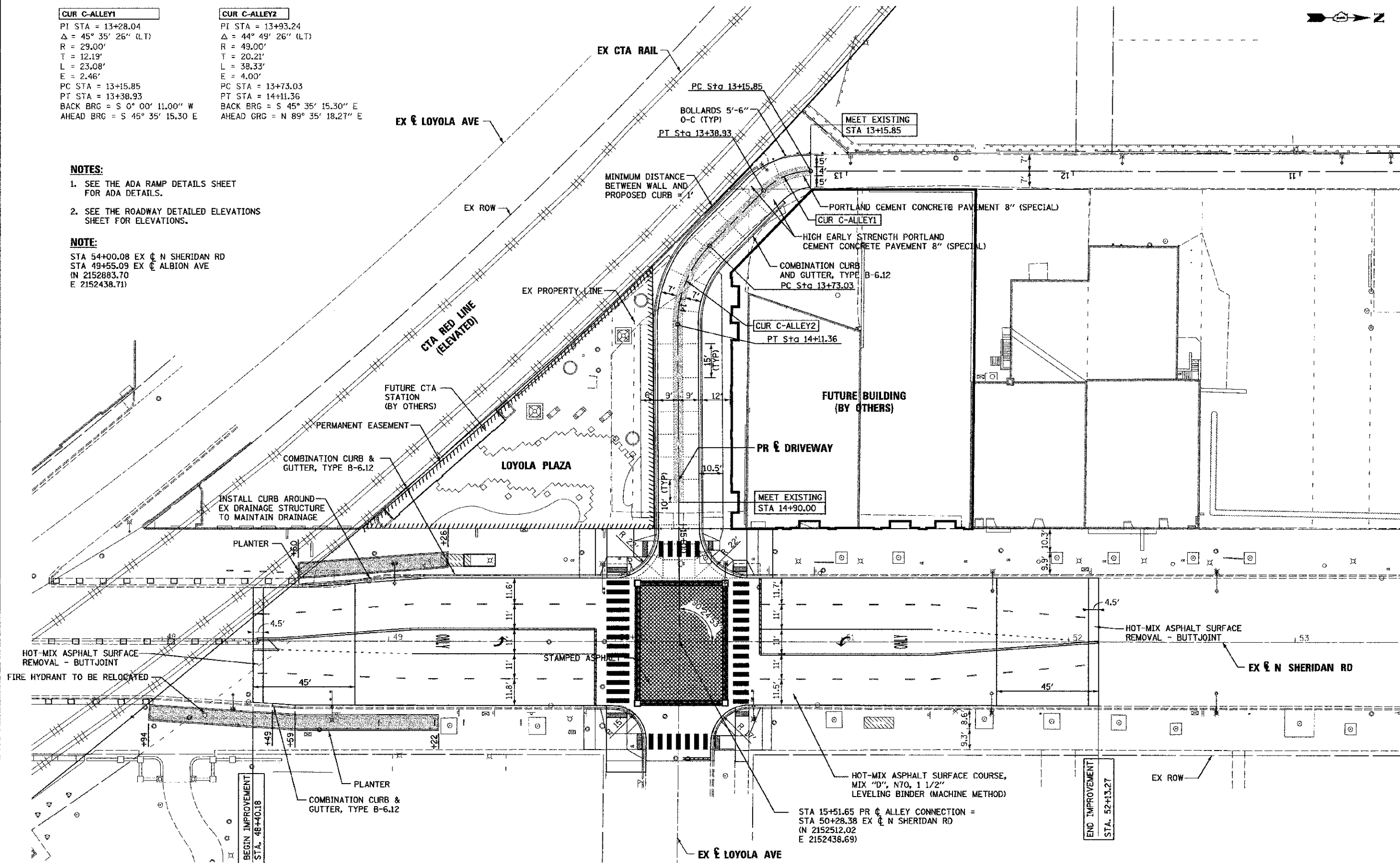
PI STA = 13+93.24
 $\Delta = 44^\circ 49' 26''$ (LT)
 R = 49.00'
 T = 20.21'
 L = 38.33'
 E = 4.00'
 PC STA = 13+73.03
 PT STA = 14+11.36
 BACK BRG = S 45° 35' 15.30" E
 AHEAD BRG = N 89° 35' 18.27" E

NOTES:

1. SEE THE ADA RAMP DETAILS SHEET FOR ADA DETAILS.
2. SEE THE ROADWAY DETAILED ELEVATIONS SHEET FOR ELEVATIONS.

NOTE:

STA 54+00.08 EX ϕ N SHERIDAN RD
 STA 49+55.09 EX ϕ ALBION AVE
 (N 2152883.70
 E 2152438.71)



FILE NAME =	DESIGNED - AAF	REVISED -
...V:\roadway\prptn-ABC-pln.dgn	DRAWN - TMB	REVISED -
USER NAME = tblank	CHECKED - JMM	REVISED -
PLOT DATE = 7/2/2012	DATE - 7/2/2012	REVISED -



STATE OF ILLINOIS
 DEPARTMENT OF TRANSPORTATION

ROADWAY PLAN

SCALE: 1"=20' SHEET NO. 1 OF 1 SHEETS STA. TO STA.

FILE RTE.	SECTION	COUNTY	TOTAL SHEETS	SHEET NO.
2865	10-B5159-00-TL	COOK	62	15
CONTRACT NO. 63715				
ILLINOIS FED. AID PROJECT				