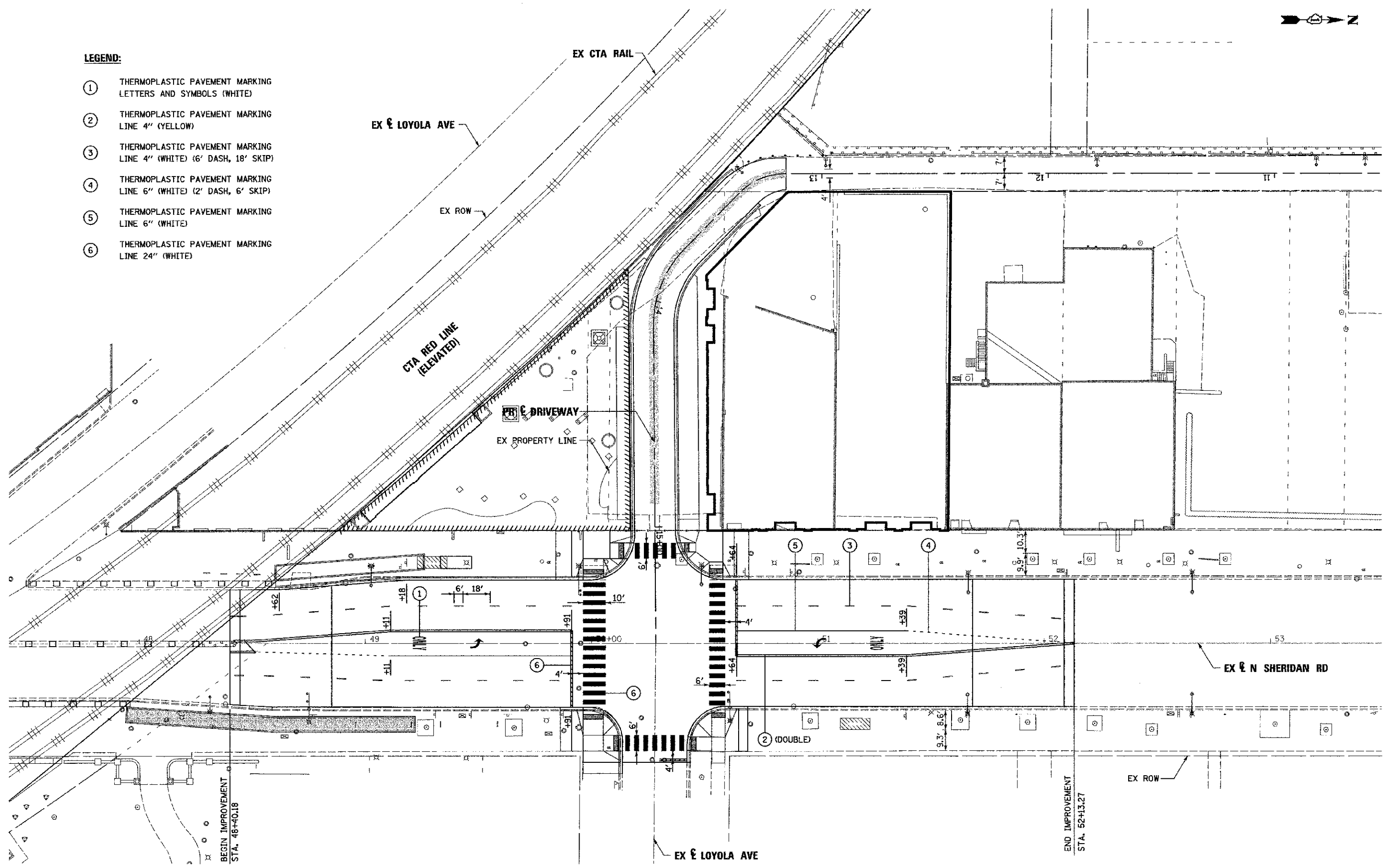


LEGEND:

- ① THERMOPLASTIC PAVEMENT MARKING LETTERS AND SYMBOLS (WHITE)
- ② THERMOPLASTIC PAVEMENT MARKING LINE 4" (YELLOW)
- ③ THERMOPLASTIC PAVEMENT MARKING LINE 4" (WHITE) (6' DASH, 18' SKIP)
- ④ THERMOPLASTIC PAVEMENT MARKING LINE 6" (WHITE) (2' DASH, 6' SKIP)
- ⑤ THERMOPLASTIC PAVEMENT MARKING LINE 6" (WHITE)
- ⑥ THERMOPLASTIC PAVEMENT MARKING LINE 24" (WHITE)



BEGIN IMPROVEMENT
STA. 46+40.18

END IMPROVEMENT
STA. 52+13.27

FILE NAME =	DESIGNED - AAF	REVISED -
... \prj\p1\48C\p1\mk.gdgn	DRAWN - TMB	REVISED -
USER NAME = tblank	CHECKED - JMM	REVISED -
PLDT DATE = 7/2/2012	DATE - 7/2/2012	REVISED -

**STATE OF ILLINOIS
DEPARTMENT OF TRANSPORTATION**

**PAVEMENT MARKING
AND SIGNING PLAN**

SCALE: 1"=20' SHEET NO. 1 OF 1 SHEETS STA. TO STA.

F.A.I. RTE.	SECTION	COUNTY	TOTAL SHEETS	SHEET NO.
2865	10-B5159-00-TL	COOK	62	33
CONTRACT NO. 63715				
ILLINOIS FED. AID PROJECT				