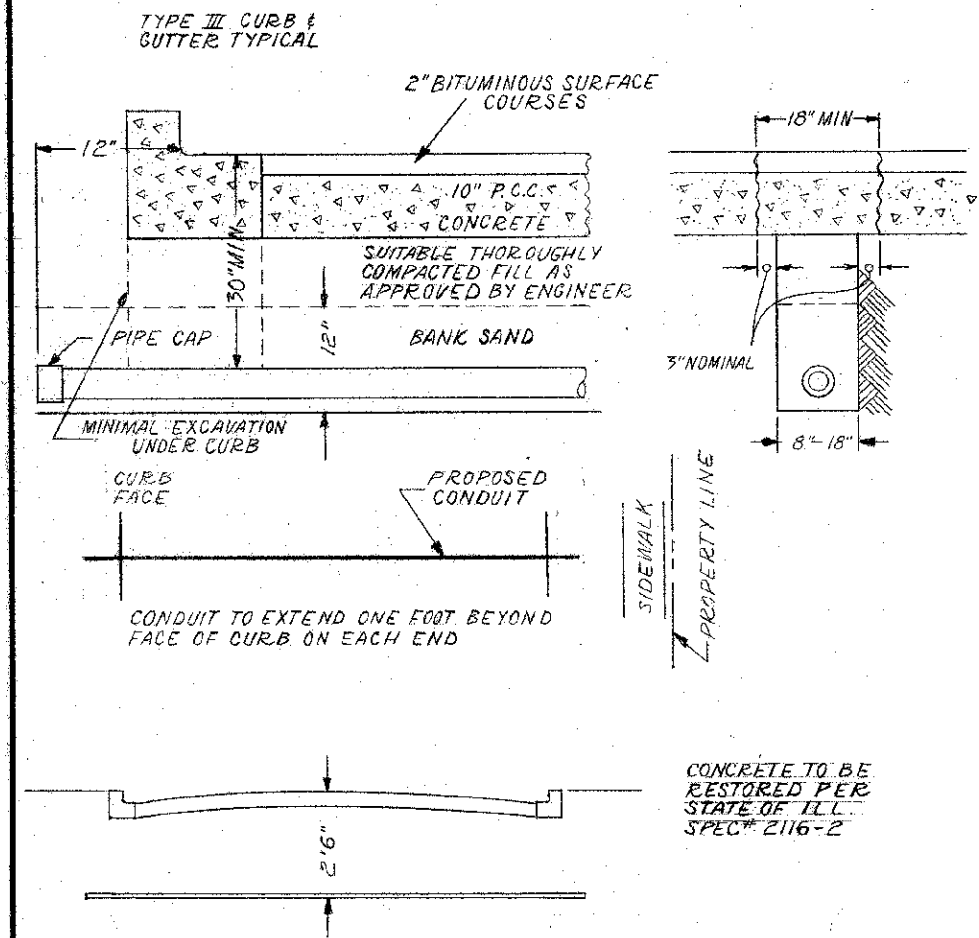


CONDUIT INSTALLATION UNDER PAVED STREET

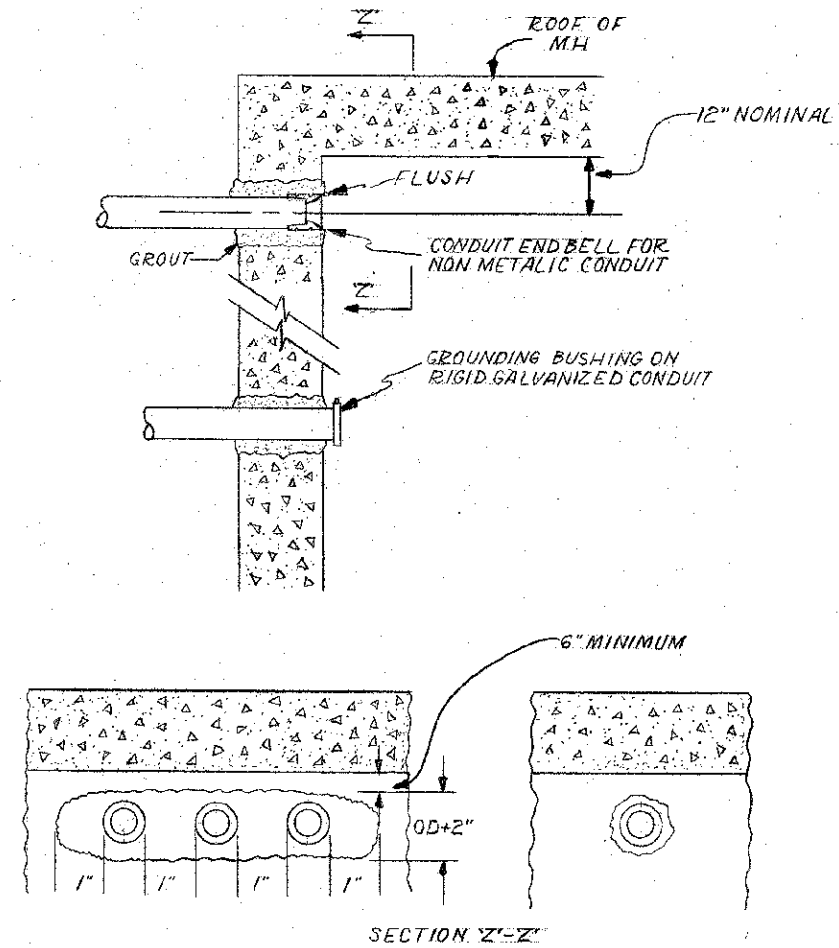


INSTALLATION METHOD OF  
INSTALLING CONDUIT UNDER  
PAVED ROADWAY

**CITY OF CHICAGO**  
DEPT. OF STREETS AND SANITATION  
BUREAU OF ELECTRICITY  
DIVISION OF ELECTRICAL ENGINEERING

DRAWN A.M. JOHNSON	CHECKED R. SYCKOWSKI	ENGINEER R.L. MARTIN
 ENGINEER OF ELECTRICITY		DRG. NO. <b>813</b>
 DEPUTY ENGINEER		DATE 3-13-12
SIZE 8 1/2" X 14"	SCALE N.T.S.	

CONDUIT INSTALLATION THROUGH EXISTING  
MANHOLE OR HANDHOLE WALL



OPENING THROUGH WALL TO BE  
KEPT TO MINIMUM SIZE TO  
ADMIT CONDUIT AND SUFFICIENT  
GROUT TO ASSURE SEALING  
WALL.

INSTALLATION METHOD OF  
INSTALLING CONDUIT THRU  
MANHOLE WALL

**CITY OF CHICAGO**  
DEPT. OF STREETS AND SANITATION  
BUREAU OF ELECTRICITY  
DIVISION OF ELECTRICAL ENGINEERING

DRAWN A.M. JOHNSON	CHECKED R. SYCKOWSKI	ENGINEER R.L. MARTIN
 ENGINEER OF ELECTRICITY		DRG. NO. <b>814</b>
 DEPUTY ENGINEER		DATE 3-13-12
SIZE 8 1/2" X 14"	SCALE N.T.S.	