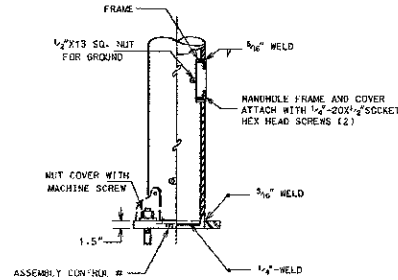
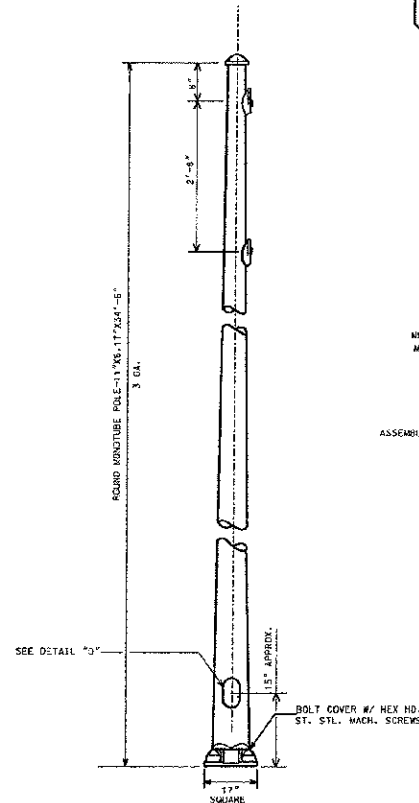
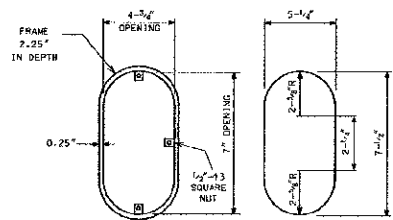


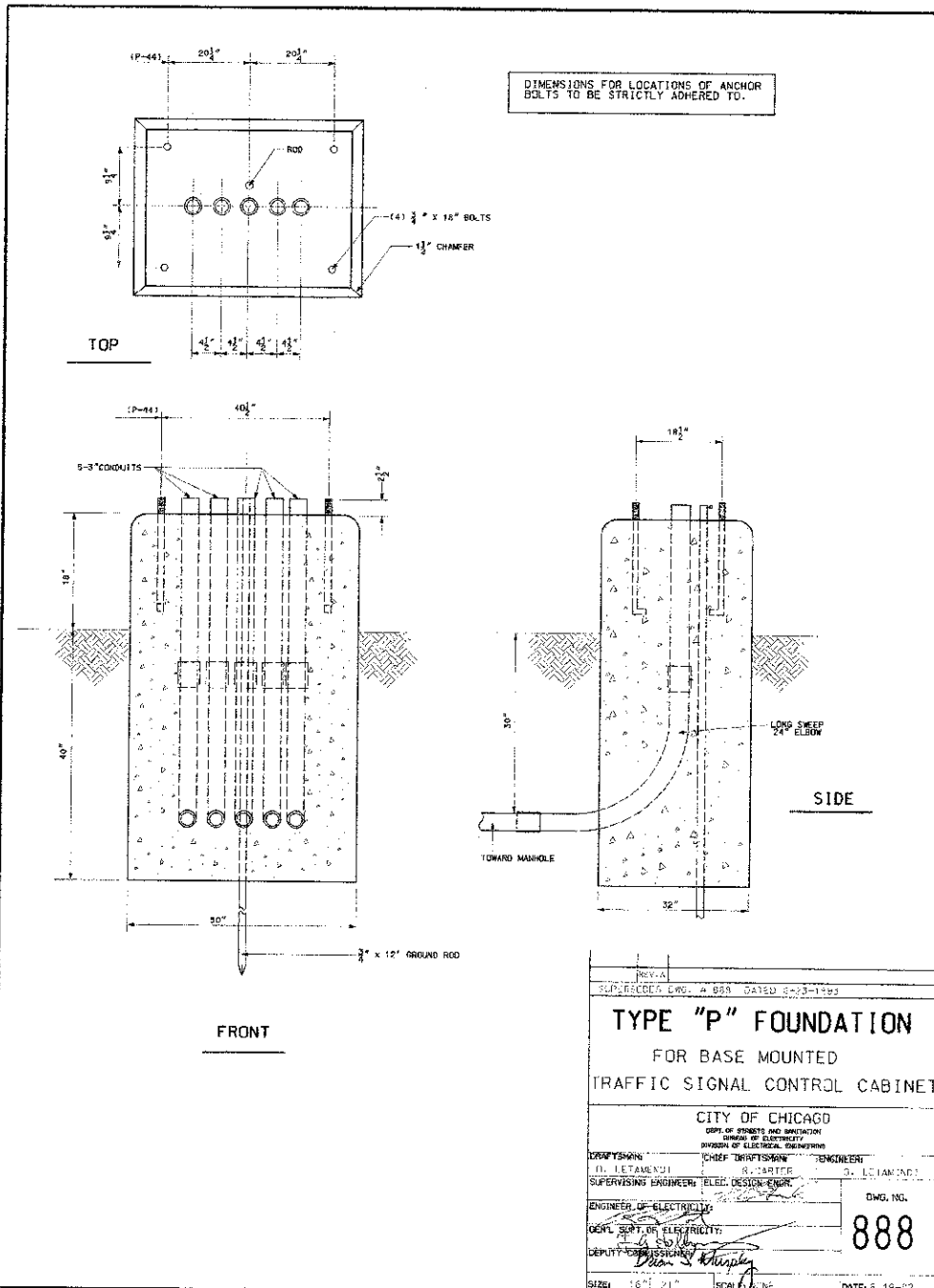
(2) 1/2"-13 TAPPED HOLES



DETAIL "D"



FRAME DOOR
HANDHOLE DETAIL



REV. A	REV. A
REPLACES DWG. A 888 DATED 8-23-1983	
TYPE "P" FOUNDATION	
FOR BASE MOUNTED	
TRAFFIC SIGNAL CONTROL CABINET	
CITY OF CHICAGO	
DEPT. OF STREETS AND SANITATION	
DIVISION OF ELECTRICITY	
CHIEF ELECTRICAL ENGINEER	
DESIGNED BY: O. LETAMENDI	ENGINEER: O. LETAMENDI
CHECKED BY: R. CARTER	DEPT. DESIGN ENGR.
DWG. NO. 888	
DATE: 6-19-02	

FILE NAME =	DESIGNED -	REVISED -
..NrpIn-REC-BOE-std-87.dgn	DRAWN -	REVISED -
USER NAME = tblank	CHECKED -	REVISED -
PLOT DATE = 7/2/2012	DATE = 7/2/2012	REVISED -



STATE OF ILLINOIS
DEPARTMENT OF TRANSPORTATION

BOE STANDARDS

SCALE: NTS SHEET NO. 8 OF 12 SHEETS STA. TO STA.

F.A.U. RTE.	SECTION	COUNTY	TOTAL SHEETS	SHEET NO.
2865	10-B5159-00-TL	COOK	62	46
CONTRACT NO. 63715				
ILLINOIS FED. AID PROJECT				