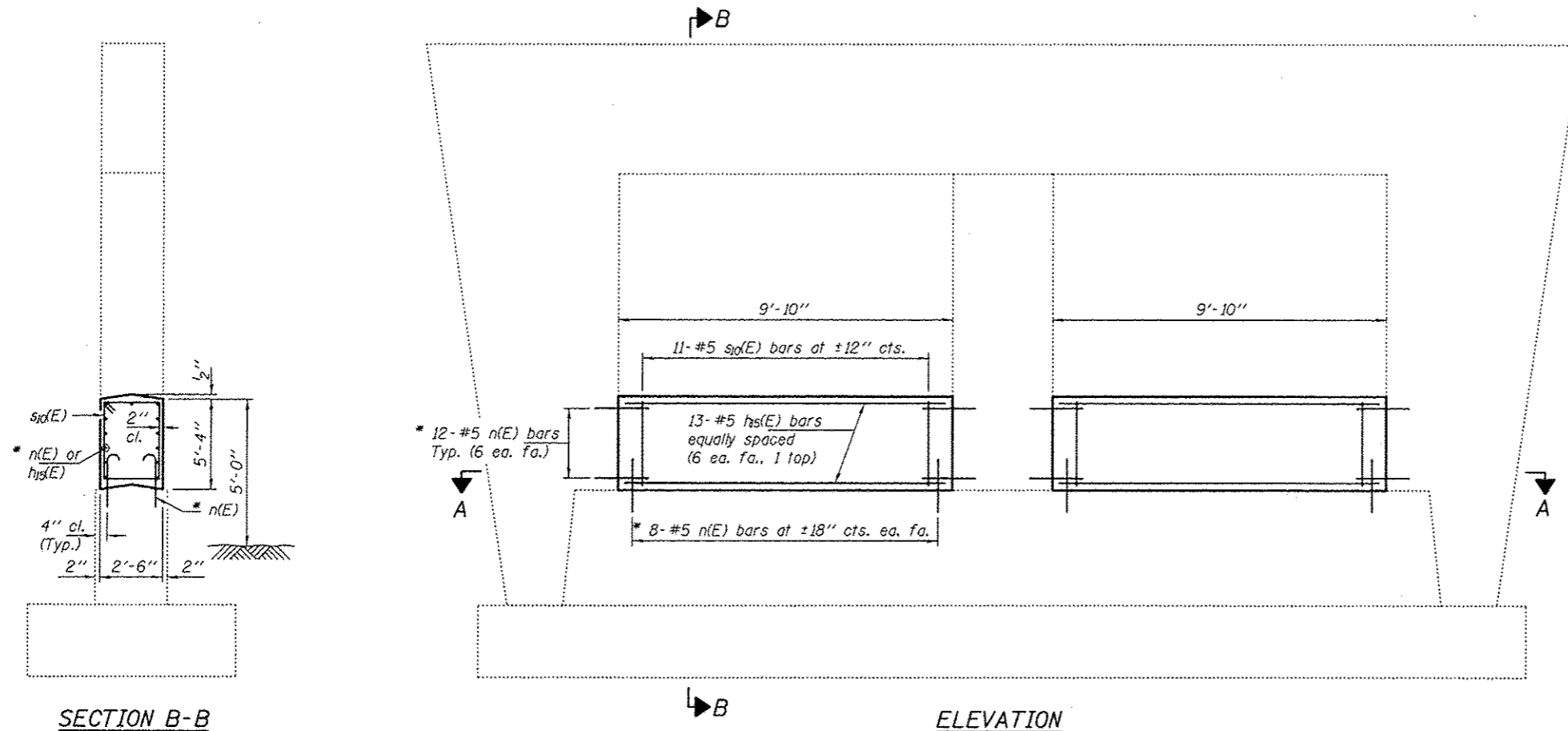


NOTES

The cost of epoxy grouting threaded rods shall be included with Reinforcement Bars, Epoxy Coated.
 Plan dimensions and details relative to existing plans are subject to nominal construction variations. The Contractor shall field verify existing dimensions and details affecting new construction and make necessary approved adjustments prior to construction or ordering of materials. Such variations shall not be cause for additional compensation for a change in scope of the work, however, the Contractor will be paid for the quantity actually furnished at the unit price bid for the work.
 Reinforcement bars designated (E) shall be epoxy coated.

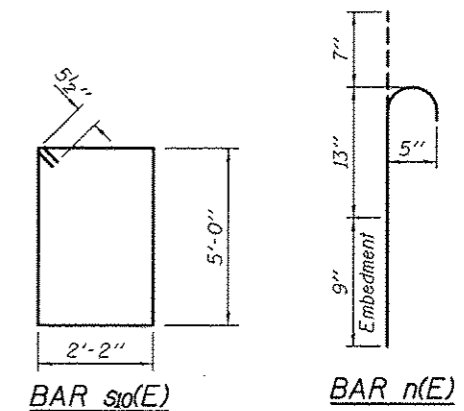


SECTION B-B

ELEVATION

SECTION A-A

* Epoxy grout n(E) bars in 9" min. holes according to Article 584 of the Standard Specifications.



BAR sld(E)

BAR n(E)

BILL OF MATERIAL

Bar	No.	Size	Length	Shape
hts(E)	26	#5	9'-6"	—
n(E)	80	#5	2'-5"	—
sld(E)	22	#5	15'-3"	□
Concrete Structures			Cu. Yd.	9.7
Reinforcement Bars, Epoxy Coated			Pound	810



EXPIRES 11-30-2012

DESIGNED DAB
 CHECKED ARS
 DRAWN ballva
 CHECKED DAB ARS

EXAMINED *David Carl Puzey*
 REGISTERED ENGINEER OF STRUCTURAL SERVICES
 PASSED *David Carl Puzey*
 ACTING ENGINEER OF BRIDGES AND STRUCTURES

DATE - JUNE 5, 2012
 REVISED 09/11/2012
 REVISED

STATE OF ILLINOIS
 DEPARTMENT OF TRANSPORTATION

PIER CRASHWALL EXTENSION
 071-0064

SHEET NO. OF SHEETS

F.A.I. RTE. SECTION COUNTY TOTAL SHEETS SHEET NO.
 412 D2 SAFETY 2012-1 OGLE 175 60
 CONTRACT NO. 64H76
 ILLINOIS FED. AID PROJECT