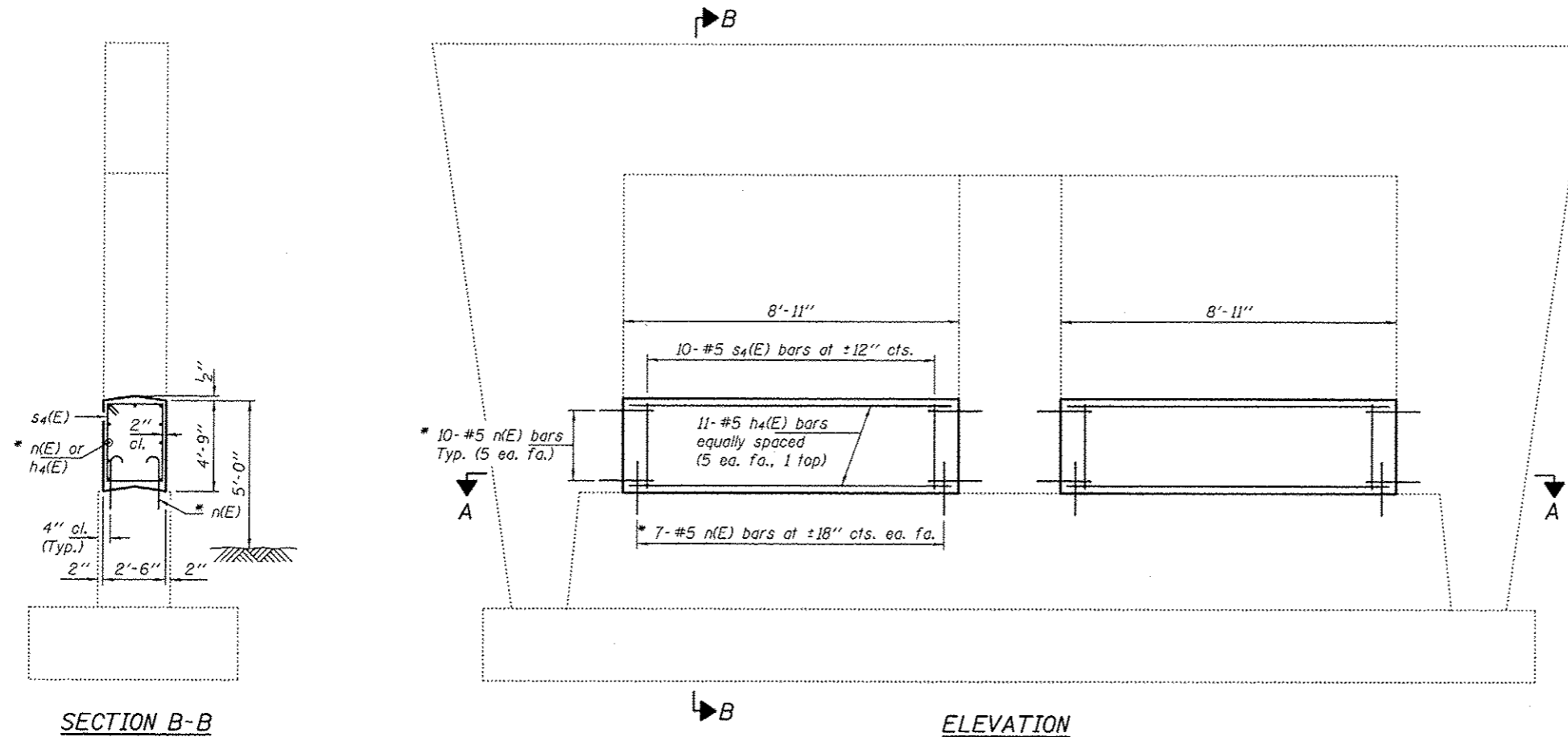
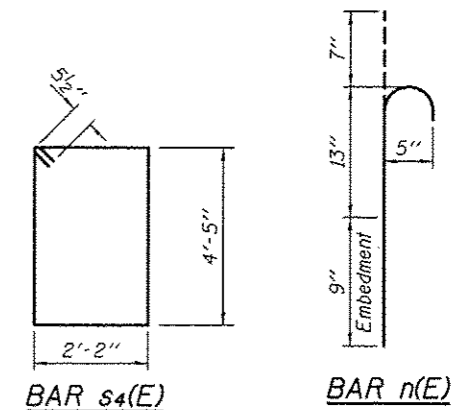


**NOTES**

The cost of epoxy grouting threaded rods shall be included with Reinforcement Bars, Epoxy Coated.  
 Plan dimensions and details relative to existing plans are subject to nominal construction variations. The Contractor shall field verify existing dimensions and details affecting new construction and make necessary approved adjustments prior to construction or ordering of materials. Such variations shall not be cause for additional compensation for a change in scope of the work, however, the Contractor will be paid for the quantity actually furnished at the unit price bid for the work.  
 Reinforcement bars designated (E) shall be epoxy coated.



\* Epoxy grout n(E) bars in 9" min. holes according to Article 584 of the Standard Specifications.



**BILL OF MATERIAL**

Bar	No.	Size	Length	Shape
h4(E)	22	#5	8'-7"	—
n(E)	68	#5	2'-5"	⊥
s4(E)	20	#5	14'-1"	□
Concrete Structures			Cu. Yd.	7.8
Reinforcement Bars, Epoxy Coated			Pound	660



EXPIRES 11-30-2012

DESIGNED DAB  
 CHECKED ARS  
 DRAWN balva  
 CHECKED DAB ARS

EXAMINED *Timothy A. Allen*  
 ACTING ENGINEER OF STRUCTURAL SERVICES  
 PASSED *David Carl Puze*  
 ACTING ENGINEER OF BRIDGES AND STRUCTURES

DATE - JUNE 5, 2012  
 REVISED *Δ* 09/11/2012  
 REVISED

STATE OF ILLINOIS  
 DEPARTMENT OF TRANSPORTATION

PIER CRASHWALL EXTENSION  
 071-0051

SHEET NO. OF SHEETS

F.A.I. RTE.	SECTION	COUNTY	TOTAL SHEETS	SHEET NO.
412	D2 SAFETY 2012-1	OGLE	175	68
				CONTRACT NO. 64H76

ILLINOIS FED. AID PROJECT