

F.A.S. RTE.	SECTION	BUREAU	TOTAL SHEETS	SHEET NO.
2247	(13X)T-2	ILLINOIS	6	1
ILLINOIS CONTRACT NO. 66C39				

**STATE OF ILLINOIS**  
**DEPARTMENT OF TRANSPORTATION**  
**DIVISION OF HIGHWAYS**

**PROPOSED**  
**HIGHWAY PLANS**

**FAS ROUTE 2247 (US 6)**  
**SECTION (13X)T-2**

**DRAINAGE REPAIR**  
**APPROXIMATELY 3.07 MILES WEST OF IL 89**  
**WITHIN THE CITY LIMITS OF SEATONVILLE**  
**BUREAU COUNTY**

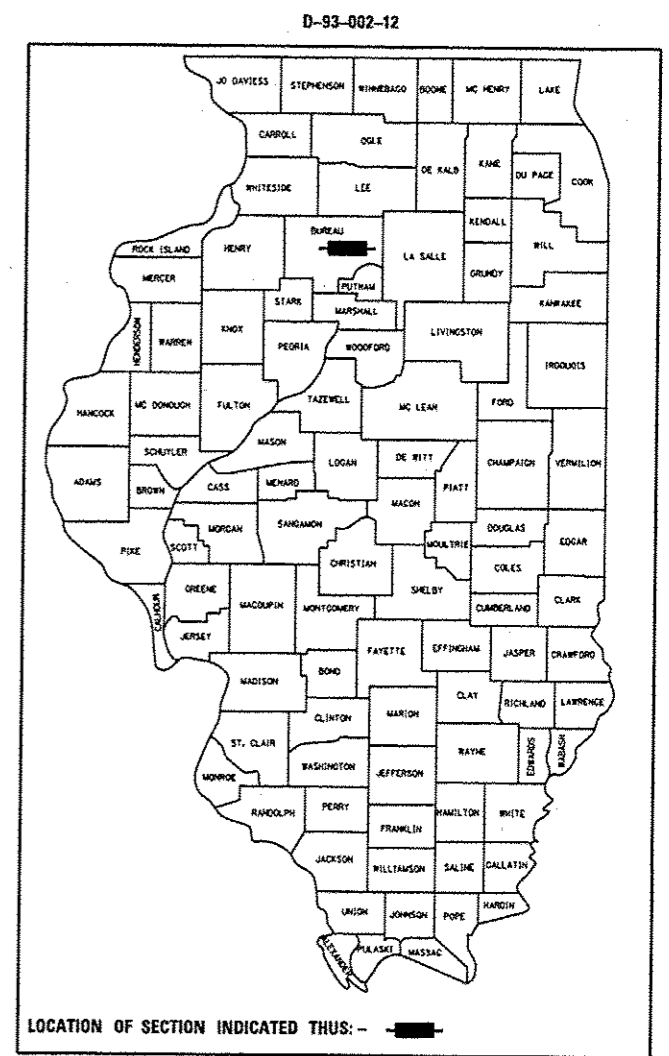
C-93-136-12

**INDEX OF SHEETS**

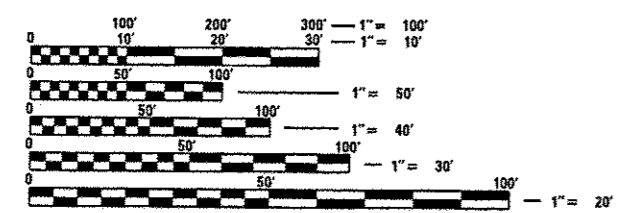
1. COVER SHEET
2. GENERAL NOTES
3. SUMMARY OF QUANTITIES
4. TYPICAL SECTION
5. PLAN DETAILS

**STANDARDS**

- |           |  |
|-----------|--|
| 000001-06 | STANDARD SYMBOLS, ABBREVIATIONS AND PATTERNS                               |
| 001006    | DECIMAL OF AN INCH AND OF A FOOT   |
| 280001-06 | TEMPORARY EROSION CONTROL SYSTEMS  |
| 701001-03 | OFF-ROAD OPERATIONS 2L, 2W, MORE THAN 15' (4.5 m) AWAY                     |
| 701006-03 | OFF-ROAD OPERATIONS 2L, 2W, 15' (4.5 m) TO 24" (600 mm) FROM PAVEMENT EDGE |
| 701201-04 | LANE CLOSURE, 2L, 2W, DAY ONLY, FOR SPEEDS ≥ 45 MPH                        |
| 701301-04 | LANE CLOSURE, 2L, 2W, SHORT TIME OPERATIONS                                |
| 701901-02 | TRAFFIC CONTROL DEVICES  |
| 704001-07 | TEMPORARY CONCRETE BARRIER   |

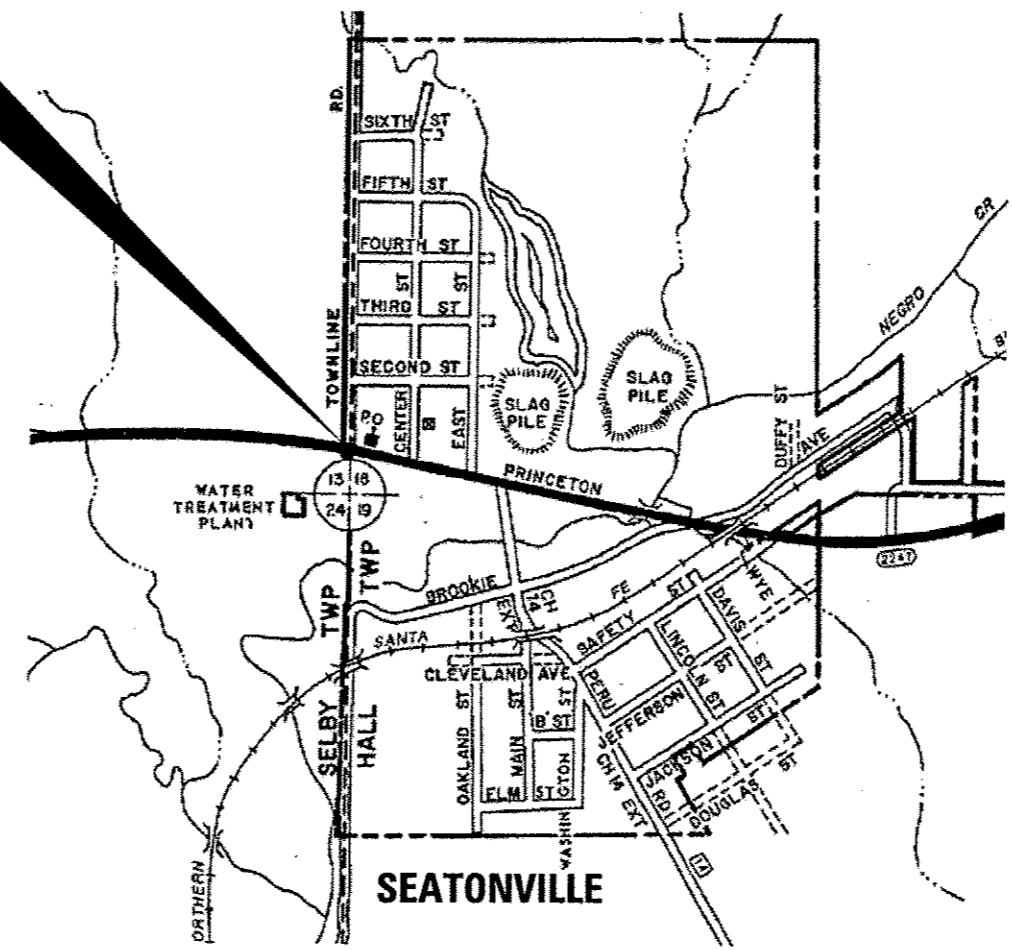


**PROJECT LOCATION**  
**36" DIA. C.M.P. CULVERT**  
**STA. 150 + 75 RT.**



FULL SIZE PLANS HAVE BEEN PREPARED USING STANDARD ENGINEERING SCALES. REDUCED SIZED PLANS WILL NOT CONFORM TO STANDARD SCALES. IN MAKING MEASUREMENTS ON REDUCED PLANS, THE ABOVE SCALES MAY BE USED.

J.U.L.I.E.  
 JOINT UTILITY LOCATION INFORMATION FOR EXCAVATION  
 1-800-892-0123  
 OR 811



**DISTRICT NO. 3 (815) 434-6131**

**PROJECT ENGINEER JOE KANNEL P.E.**  
**UNIT CHIEF RON WOODSHANK**  
**TOWNSHIP HALL**

**CONTRACT NO. 66C39**

**RURAL**

<b>INTERSTATE</b>	
<b>FAS 2247 (US 6)</b>	
<b>2011</b>	
ADT	2700
P.V.	95.93%
S.U.	2.22%
M.U.	1.85%

STATE OF ILLINOIS  
 DEPARTMENT OF TRANSPORTATION  
 DIVISION OF HIGHWAYS

SUBMITTED 7-9 2012

*Eric S. Therkildsen*  
 DEPUTY DIRECTOR OF HIGHWAYS, REGION ENGINEER

*August 17 2012*  
*John D. Salamelli, P.E. /a*  
 acting ENGINEER OF DESIGN AND ENVIRONMENT

*August 17 2012*  
*William R. Frey /a*  
 acting DIRECTOR OF HIGHWAYS, CHIEF ENGINEER

**PRINTED BY THE AUTHORITY**  
**OF THE STATE OF ILLINOIS**