

INDEX OF SHEETS

1. COVER SHEET
2. GENERAL NOTES
3. SUMMARY OF QUANTITIES
4. TYPICAL SECTION
5. PLAN DETAILS

STANDARDS

- | | |
|-----------|--|
| 000001-06 | STANDARD SYMBOLS, ABBREVIATIONS AND PATTERNS |
| 001006 | DECIMAL OF AN INCH AND OF A FOOT |
| 280001-06 | TEMPORARY EROSION CONTROL SYSTEMS |
| 701001-03 | OFF-ROAD OPERATIONS 2L, 2W, MORE THAN 15' (4.5 m) AWAY |
| 701006-03 | OFF-ROAD OPERATIONS 2L, 2W, 15' (4.5 m) TO 24" (600 mm) FROM PAVEMENT EDGE |
| 701201-04 | LANE CLOSURE, 2L, 2W, DAY ONLY, FOR SPEEDS ≥ 45 MPH |
| 701301-04 | LANE CLOSURE, 2L, 2W, SHORT TIME OPERATIONS |
| 701901-02 | TRAFFIC CONTROL DEVICES |
| 704001-07 | TEMPORARY CONCRETE BARRIER |

**DEPARTMENT OF TRANSPORTATION
DIVISION OF HIGHWAYS**

**PROPOSED
HIGHWAY PLANS**

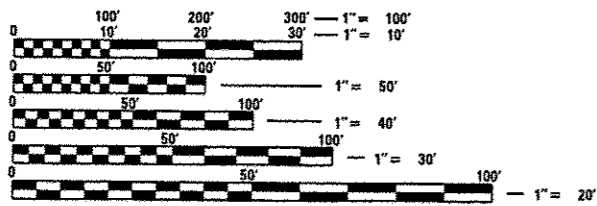
**FAS ROUTE 2247 (US 6)
SECTION (13X)T-2**

**DRAINAGE REPAIR
APPROXIMATELY 3.07 MILES WEST OF IL 89
WITHIN THE CITY LIMITS OF SEATONVILLE
BUREAU COUNTY**

C-93-136-12

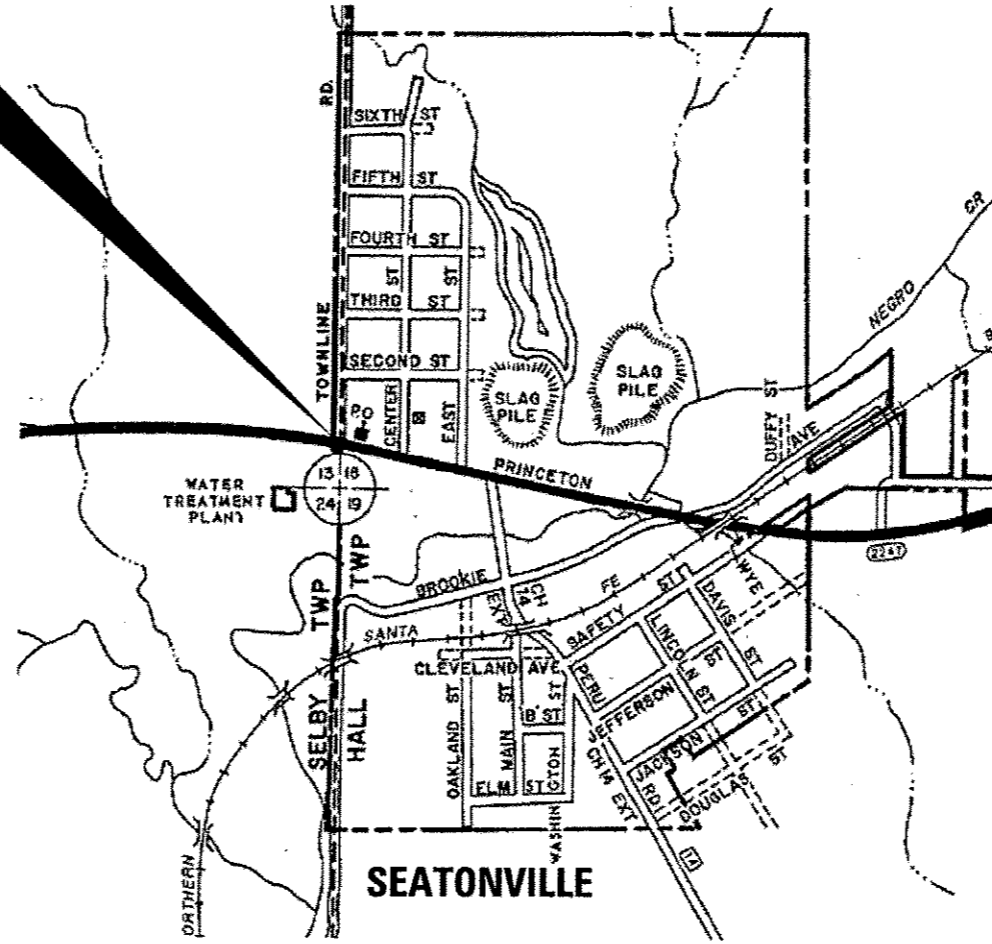


PROJECT LOCATION
36" DIA. C.M.P. CULVERT
STA. 150+75 RT.



FULL SIZE PLANS HAVE BEEN PREPARED USING STANDARD ENGINEERING SCALES. REDUCED SIZED PLANS WILL NOT CONFORM TO STANDARD SCALES. IN MAKING MEASUREMENTS ON REDUCED PLANS, THE ABOVE SCALES MAY BE USED.

J.U.L.I.E.
JOINT UTILITY LOCATION INFORMATION FOR EXCAVATION
1-800-892-0123
OR 811



DISTRICT NO. 3 (815) 434-6131

PROJECT ENGINEER JOE KANNEL P.E.
UNIT CHIEF RON WOODSHANK
TOWNSHIP HALL

CONTRACT NO. 66C39

RURAL	
INTERSTATE	
FAS 2247 (US 6)	
2011	
ADT	2700
P.V.	95.93%
S.U.	2.22%
M.U.	1.85%

STATE OF ILLINOIS
DEPARTMENT OF TRANSPORTATION
DIVISION OF HIGHWAYS

SUBMITTED 7-9 2012

Eric S. Therkildsen
DEPUTY DIRECTOR OF HIGHWAYS, REGION ENGINEER

August 17 2012
John D. Salamelli, P.E. /a
acting ENGINEER OF DESIGN AND ENVIRONMENT

August 17 2012
William R. Frey /a
acting DIRECTOR OF HIGHWAYS, CHIEF ENGINEER

**PRINTED BY THE AUTHORITY
OF THE STATE OF ILLINOIS**

GENERAL NOTES

BEFORE ORDERING PIPE CULVERTS OR PIPE DRAINS, THE CONTRACTOR SHALL CONSULT THE ENGINEER FOR EXACT LENGTHS.

SEEDING SHALL NOT BE PERMITTED AT ANY TIME WHEN THE GROUND IS FROZEN, WET, OR IN AN UNTILLABLE CONDITION. LOCATIONS TO BE SEEDED WILL BE DETERMINED BY THE ENGINEER.

THE FINISHED EARTHWORK SHALL HAVE A VEGETATION SUSTAINING SOIL COVERING THE TOP FOUR INCHES IN AREAS TO BE SEEDED. THE VEGETATION SUSTAINING SOIL REQUIRED WILL NOT BE PAID FOR SEPARATELY BUT SHALL BE INCLUDED IN THE COST OF "EMBANKMENT".

ABANDONED UNDERGROUND UTILITIES THAT CONFLICT WITH CONSTRUCTION SHALL BE DISPOSED OF OUTSIDE THE LIMITS OF THE RIGHT OF WAY ACCORDING TO ARTICLE 202.03 OF THE STANDARD SPECIFICATIONS AND AS DIRECTED BY THE ENGINEER. THIS WORK WILL NOT BE PAID FOR SEPARATELY, BUT SHALL BE INCLUDED IN THE COST OF EARTH EXCAVATION.

ANY REFERENCE TO A STANDARD IN THESE PLANS SHALL BE INTERPRETED TO MEAN THE EDITION AS INDICATED BY THE SUBNUMBER SHOWN IN THE LIST OF STANDARDS OR THE COPY INCLUDED IN THESE PLANS.

THE WORK REQUIRED TO CONNECT ANY PIPE CULVERT TO AN EXISTING DRAINAGE STRUCTURE OR PIPE WILL NOT BE PAID FOR SEPARATELY, BUT SHALL BE CONSIDERED AS INCLUDED IN THE CONTRACT UNIT PRICE BID FOR THE PIPE CULVERT ITEMS.

THE CONTRACTOR SHALL CONTACT JULIE AT LEAST 48 HOURS PRIOR TO EXCAVATION TO DETERMINE WHICH UTILITIES ARE IN THE AREA.

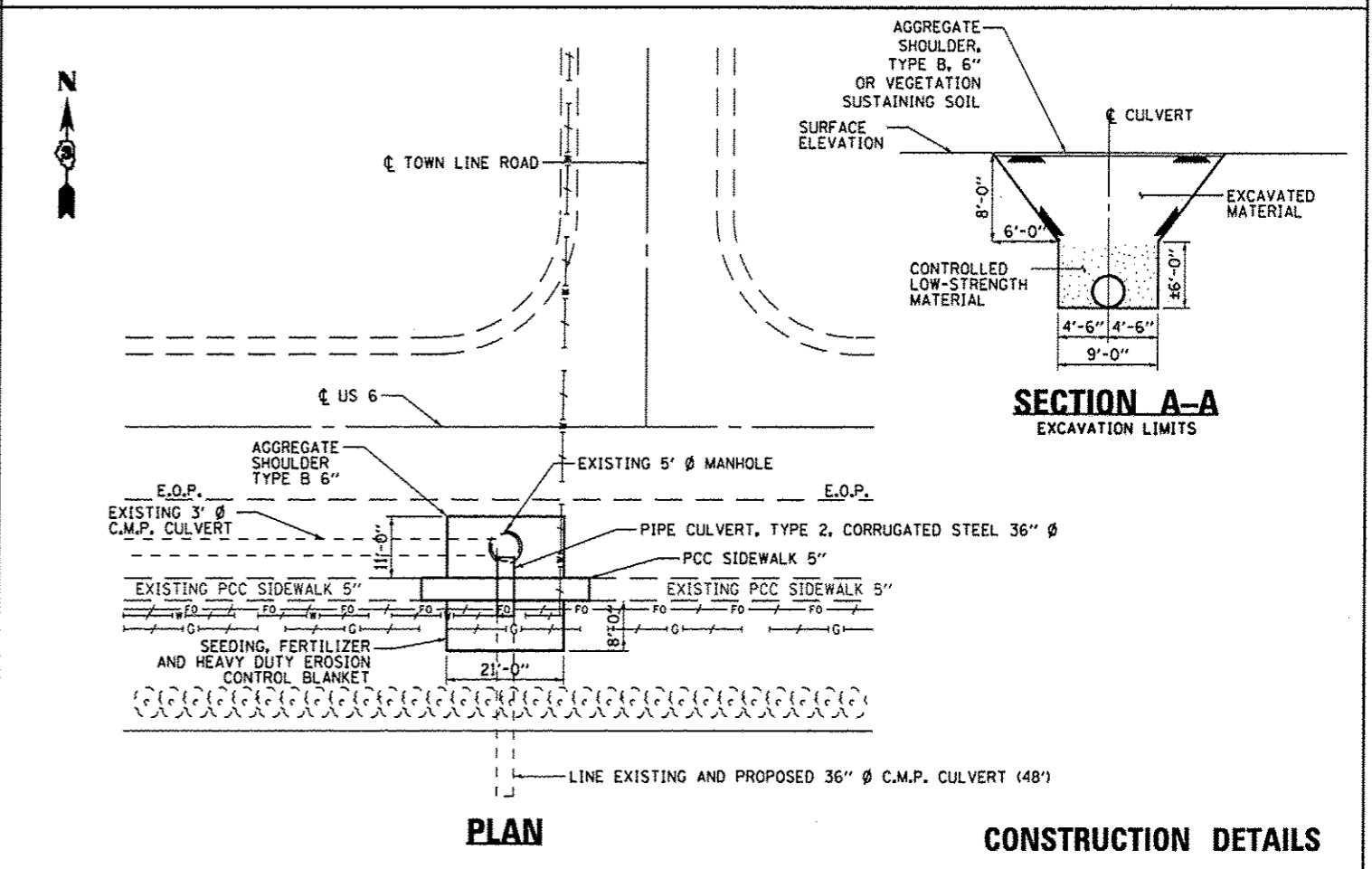
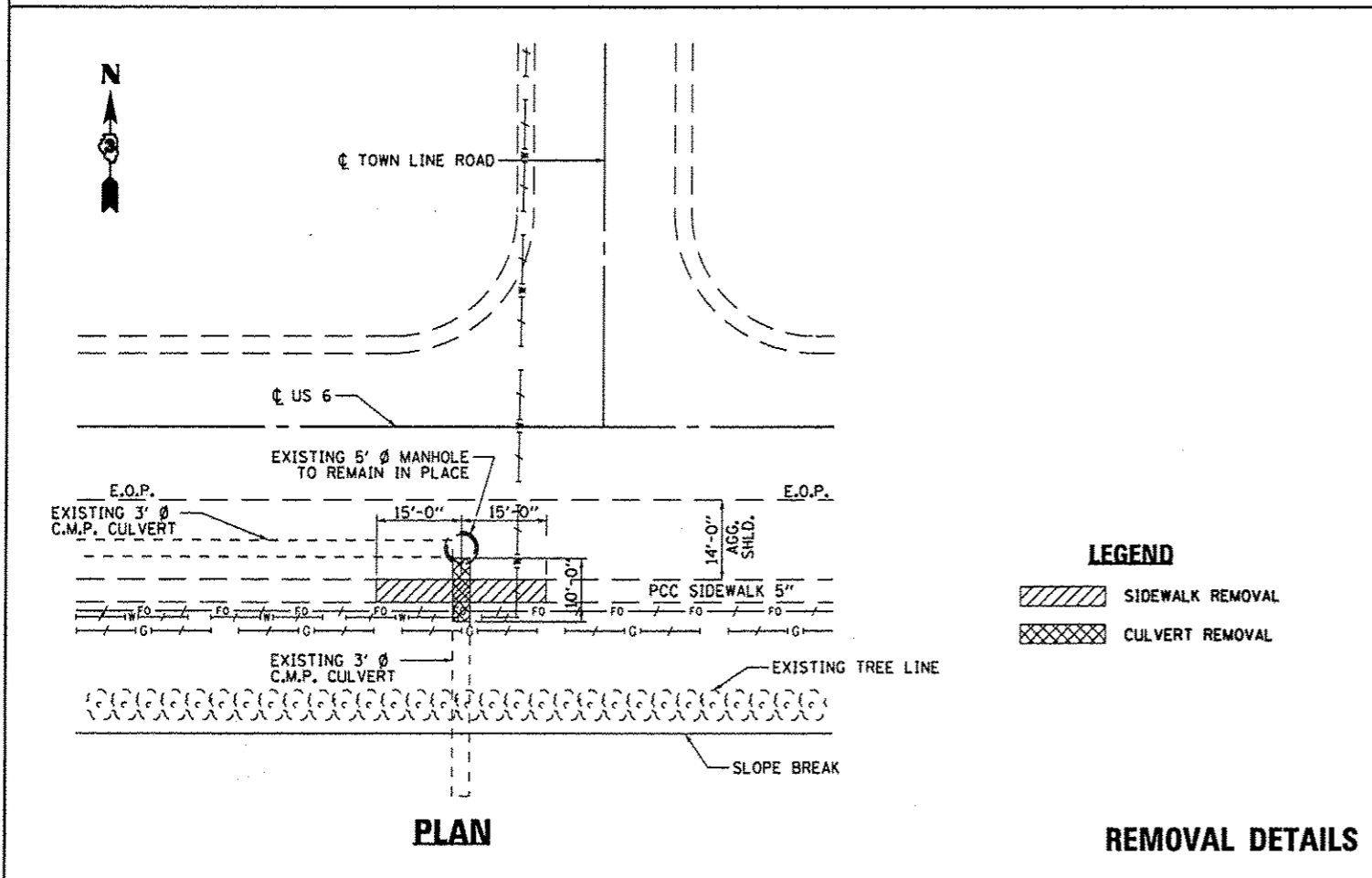
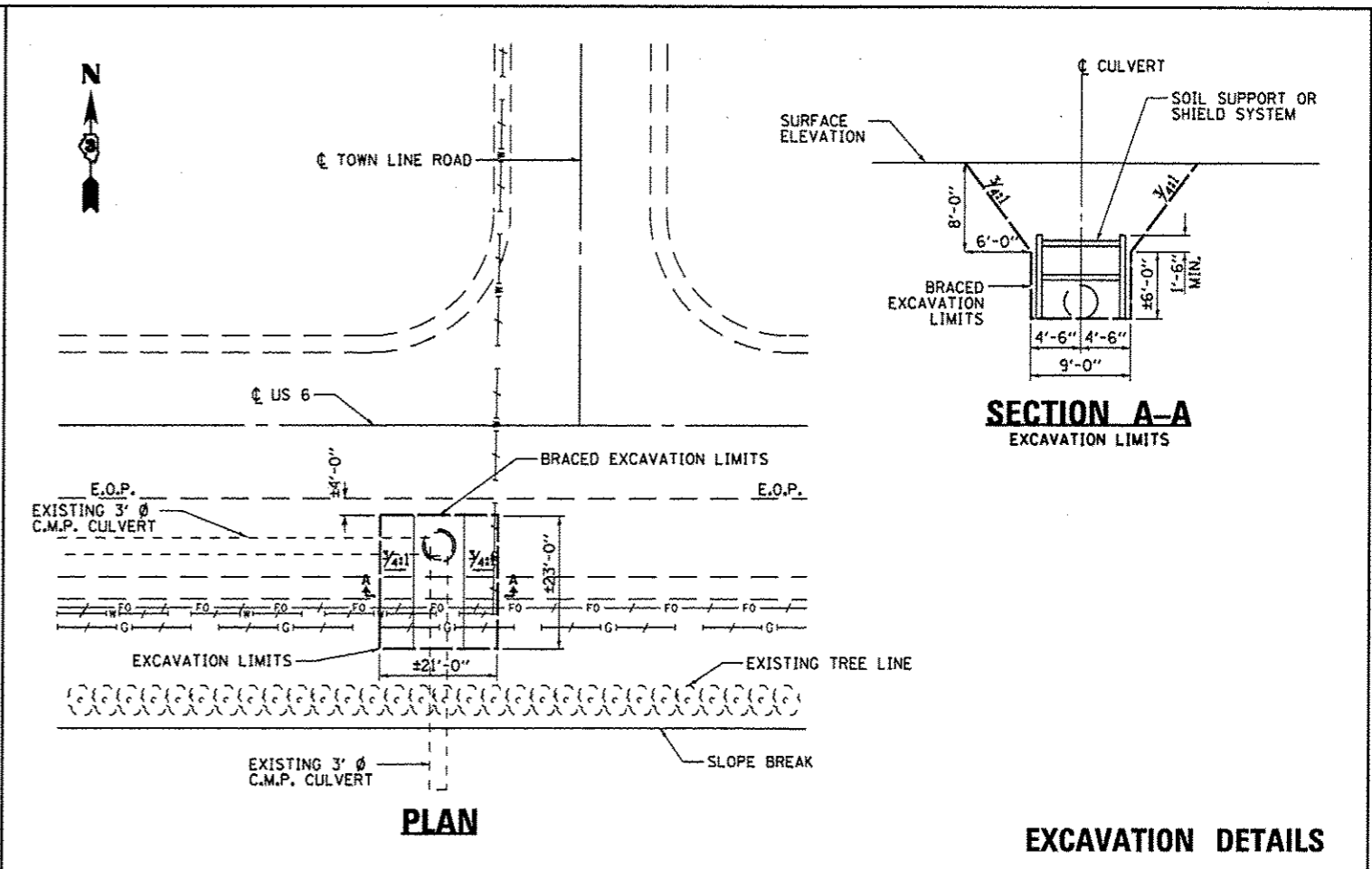
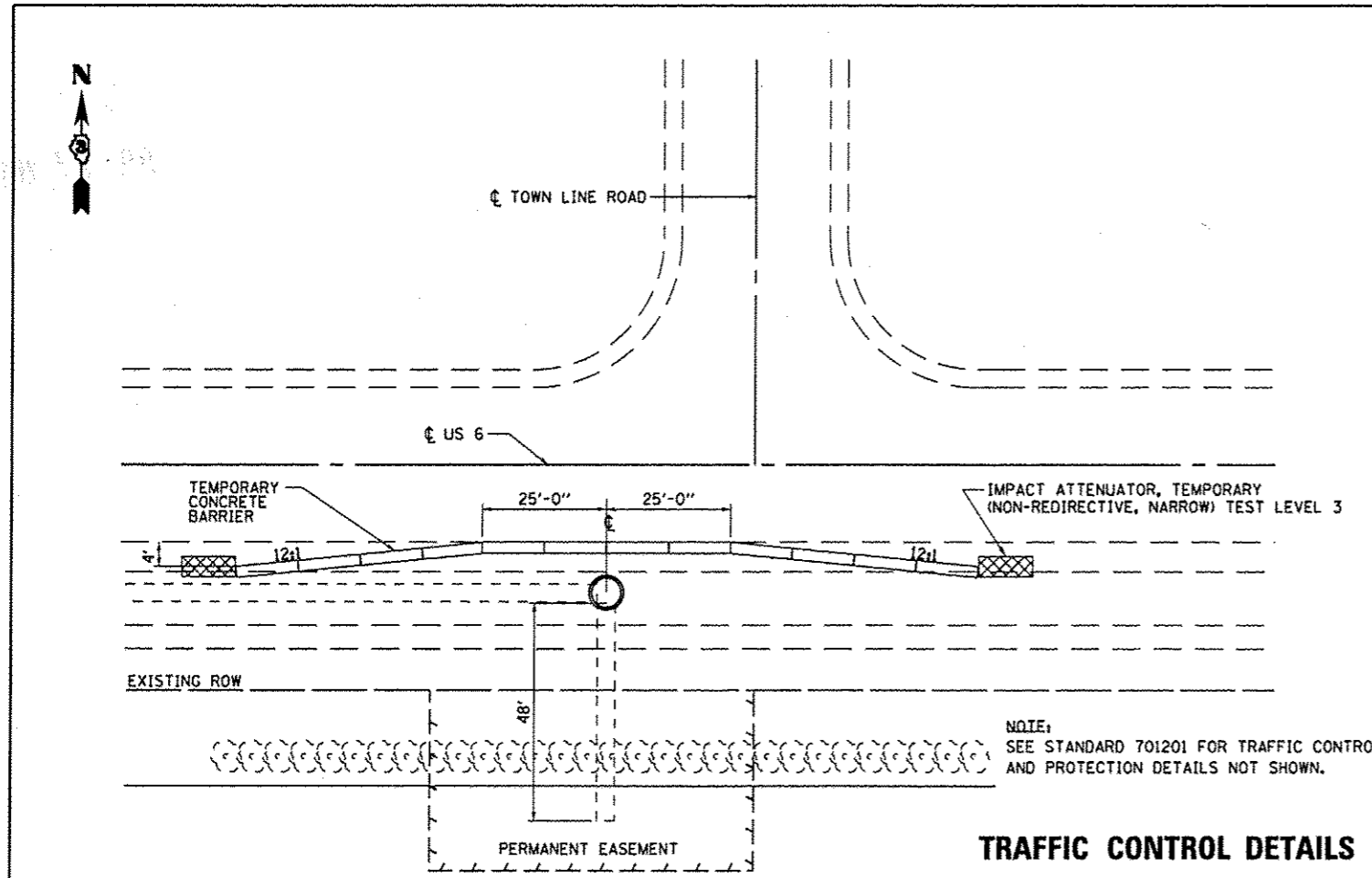
COMMITMENTS

ALL EXISTING SOILS OR EMBANKMENTS DISTURBED OR EXCAVATED DUE TO THE CONTRACTOR'S CONSTRUCTION OPERATIONS SHALL REMAIN ON SITE AND SHALL BE DISPOSED OF WITHIN THE LIMITS OF THE STATE RIGHT OF WAY AS DIRECTED BY THE ENGINEER.

DATE: 7-9-12
 PREPARED BY: [Signature]
 DISTRICT STUDIES & PLANS ENGINEER
 EXAMINED BY: [Signature]
 DISTRICT CONSTRUCTION ENGINEER
Wayne L Phillips
 DISTRICT MATERIALS ENGINEER
[Signature]
 DISTRICT OPERATIONS ENGINEER

FILE NAME =	USER NAME = woodshankr1	DESIGNED - RW	REVISED -	STATE OF ILLINOIS DEPARTMENT OF TRANSPORTATION	GENERAL NOTES	F.A.S. RTE. 2247	SECTION (13X)T-2	COUNTY BUREAU	TOTAL SHEETS 6	SHEET NO. 2		
c:\pr-work\pvidot\woodshankr1\d0389844\066C39-shr-deta1.dgn	DRAWN - RW	REVISED -				SCALE:	SHEET NO. 1 OF 1 SHEETS	STA.	TO STA.	ILLINOIS FED. AID PROJECT CONTRACT NO. 66C39		
	PLOT SCALE = 100.0000' / 1" = 100'	CHECKED -	REVISED -									
	PLOT DATE = 7/5/2012	DATE -	REVISED -									

CODE NO.	ITEM	UNIT	TOTAL QUANTITY	CONSTR. CODE
				STATE FUNDS 100% STATE ROADWAY 0044
20200100	EARTH EXCAVATION	CU YD	94	94
25000110	SEEDING, CLASS 1A	ACRE	0.004	0.004
25000400	NITROGEN FERTILIZER NUTRIENT	POUND	0.4	0.4
25000500	PHOSPHORUS FERTILIZER NUTRIENT	POUND	0.4	0.4
25000600	POTASSIUM FERTILIZER NUTRIENT	POUND	0.4	0.4
25100635	HEAVY DUTY EROSION CONTROL BLANKET	SQ YD	19	19
42400200	PORTLAND CEMENT CONCRETE SIDEWALK 5 INCH	SQ FT	120	120
44000600	SIDEWALK REMOVAL	SQ FT	120	120
48101500	AGGREGATE SHOULDERS, TYPE B 6"	SQ YD	26	26
50105220	PIPE CULVERT REMOVAL	FOOT	10	10
542D1081	PIPE CULVERTS, CLASS D, TYPE 2 36"	FOOT	10	10
54390230	INSERTION CULVERT LINER 36"	FOOT	48	48
59300100	CONTROLLED LOW-STRENGTH MATERIAL	CU YD	46	46
67100100	MOBILIZATION	L SUM	1	1
70100450	TRAFFIC CONTROL AND PROTECTION, STANDARD 701201	L SUM	1	1
70102640	TRAFFIC CONTROL AND PROTECTION, STANDARD 701801	L SUM	1	1
70400100	TEMPORARY CONCRETE BARRIER	FOOT	146	146
X2020502	BRACED EXCAVATION	CU YD	148	148
Z0030251	IMPACT ATTENUATORS, TEMPORARY (NON- REDIRECTIVE, NARROW), TEST LEVEL 3	EACH	2	2



LEGEND

▨ SIDEWALK REMOVAL

▣ CULVERT REMOVAL

FILE NAME =	USER NAME = woodshankr1	DESIGNED - RW	REVISED -	STATE OF ILLINOIS DEPARTMENT OF TRANSPORTATION	PLAN DETAILS		F.A.S. RTE. 2247	SECTION (13)X1-2	COUNTY BUREAU	TOTAL SHEETS 6	SHEET NO. 5
or\p\work\p\wdot\woodshankr1\d0309044\366C39-shr-details.dgn	DRAWN - RW	REVISIONS	CONTRACT NO. 66C39				ILLINOIS FED. AID PROJECT				
PLOT SCALE = 100.0000' / in.	CHECKED -	REVISIONS	SCALE:		SHEET NO. 1 OF 1 SHEETS	STA. TO STA.					
PLOT DATE = 7/9/2012	DATE -	REVISIONS									