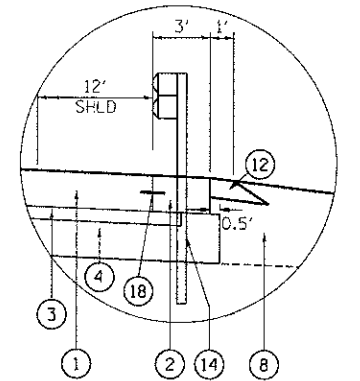
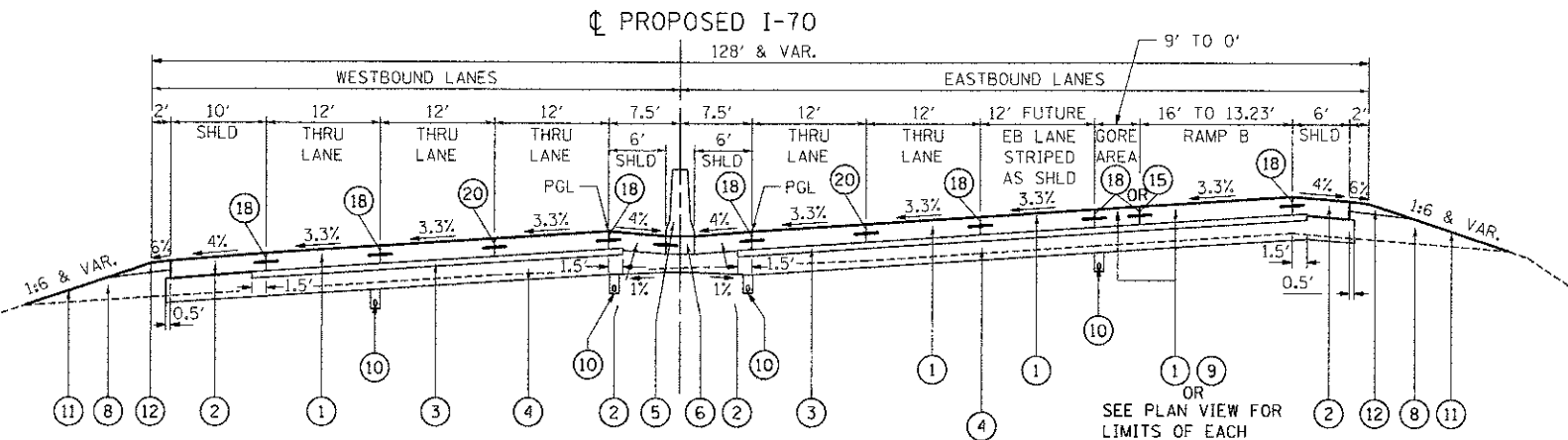


H PROPOSED I-70 TYPICAL SECTION
 STA. 156+46.00 TO STA. 166+83.54
 SEE SECTION C ON SHEET 15 FOR STA. 166+83.54 TO STA. 183+93.00

SEE DETAIL C & SECTION E FOR VARIATIONS

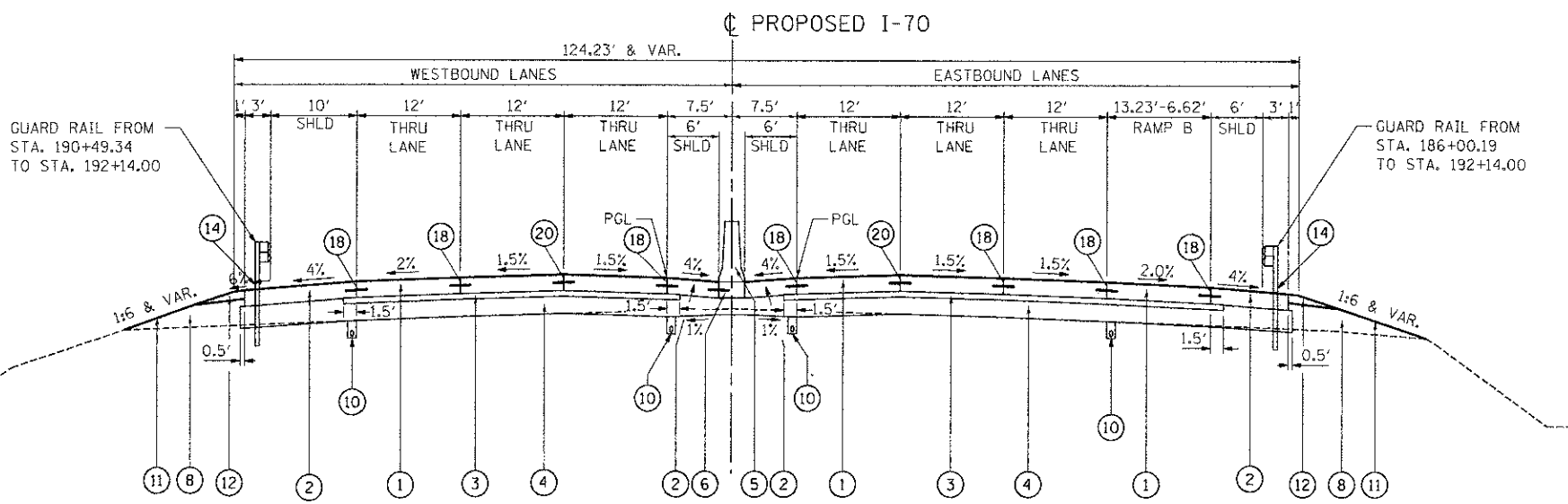


DETAIL C
 STA. 156+37.50 TO STA. 158+00.00



I PROPOSED I-70 TYPICAL SECTION
 STA. 183+93.00 TO STA. 188+68.00

SEE PLAN VIEW FOR LIMITS OF EACH



J PROPOSED I-70 TYPICAL SECTION
 STA. 188+68.00 TO STA. 191+99.00

WB SUPERELEVATION TRANSITION STA. 188+68.00 3.30% TO STA. 190+37.00 N.C.
 EB SUPERELEVATION TRANSITION STA. 188+68.00 3.30% TO STA. 191+12.00 N.C.

- PROPOSED LEGEND**
- ① CONTINUOUSLY REINFORCED PORTLAND CEMENT CONCRETE PAVEMENT 11 1/4"
 - ② PORTLAND CEMENT CONCRETE SHOULDERS 11 1/4"
 - ③ STABILIZED SUBBASE - HOT-MIX ASPHALT, 4"
 - ④ AGGREGATE SUBGRADE IMPROVEMENT 12"
 - ⑤ CONCRETE BARRIER, DOUBLE FACE, 42 INCH HEIGHT
 - ⑥ CONCRETE BARRIER BASE (SEE ROADWAY DETAILS FOR TIE BAR AND JOINT DETAILS)
 - ⑦ CONCRETE SHOULDER CURB (STD. 610001)
 - ⑧ EMBANKMENT
 - ⑨ PORTLAND CEMENT CONCRETE PAVEMENT 11 1/4" (JOINTED)
 - ⑩ PIPE UNDERDRAINS 4"
 - ⑪ SEEDING, (LANDSCAPING BY OTHERS)
 - ⑫ AGGREGATE SHOULDERS, TYPE B 6"
 - ⑬ STR. TIE BAR (SEE STR. SHEETS FOR DETAILS)
 - ⑭ STEEL PLATE BEAM GUARD RAIL, TYPE A, 6 FOOT POSTS
 - ⑮ LONGITUDINAL KEYED JOINT (WITHOUT TIE BARS)
 - ⑯ COMBINATION CONCRETE CURB AND GUTTER, TYPE M-4.24
 - ⑰ ANCHORAGE SLAB & BARRIER WALL (SEE DETAILS & BILL OF MATERIALS SHEETS 227 - 232)
 - ⑱ LONGITUDINAL CONSTRUCTION JOINT WITH NO. 6 TIE BARS AT 24" CTS.
 - ⑲ LONGITUDINAL SAWED JOINT WITH NO. 6 TIE BARS AT 18" CTS.
 - ⑲ LONGITUDINAL SAWED JOINT WITH NO. 6 TIE BARS AT 30" CTS.
 - ⑳ AGGREGATE BASE COURSE, TYPE B 6"
 - ㉑ CONCRETE MEDIAN SURFACE, 6 INCH

ALL TIE BARS SHALL BE EPOXY COATED

☐ = INDICATES PAYMENT INCLUDED IN COST OF ANOTHER ITEM

NOTE: THE COST OF THE ADDITIONAL THICKNESS OF AGGREGATE SUBGRADE IMPROVEMENT 12" REQUIRED BEYOND THE LIMITS OF THE STABILIZED SUBBASE HMA, 4" OR REQUIRED TO SLOPE THE SHOULDER SUBGRADE TO THE UNDERDRAINS SHALL BE INCLUDED IN THE CONTRACT UNIT PRICE PER SQ YD FOR AGGREGATE SUBGRADE IMPROVEMENT 12".

FILE NAME = #FILEL# USER NAME = #USER# DESIGNED - JB REVISIONS -
 #FILEL# DRAWN - JB REVISIONS -
 PLOT SCALE = #SCALE# CHECKED - ACL REVISIONS -
 PLOT DATE = #DATE# DATE - 06/29/12 REVISIONS -

TENG TENG & ASSOCIATES, INC. ENGINEERS/ARCHITECTS/PLANNERS CHICAGO, ILLINOIS		STATE OF ILLINOIS DEPARTMENT OF TRANSPORTATION I-70 CONNECTION		PROPOSED I-70 TYPICAL SECTIONS 3		F.A.P. RTE. 998	SECTION 82-1R	COUNTY ST. CLAIR	TOTAL SHEET SHEETS: NO. 294 16
SCALE: N.T.S.		SHEET NO. 3 OF 5 SHEETS		STA. TO STA.		FED. ROAD DIST. NO. ILLINOIS FED. AID PROJECT		CONTRACT NO. 76C43	