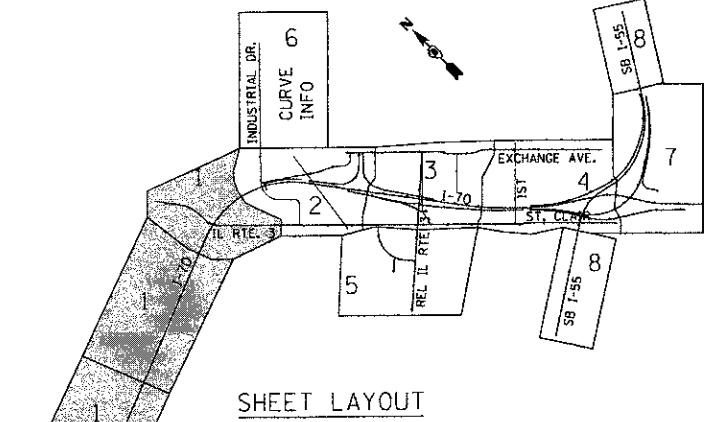
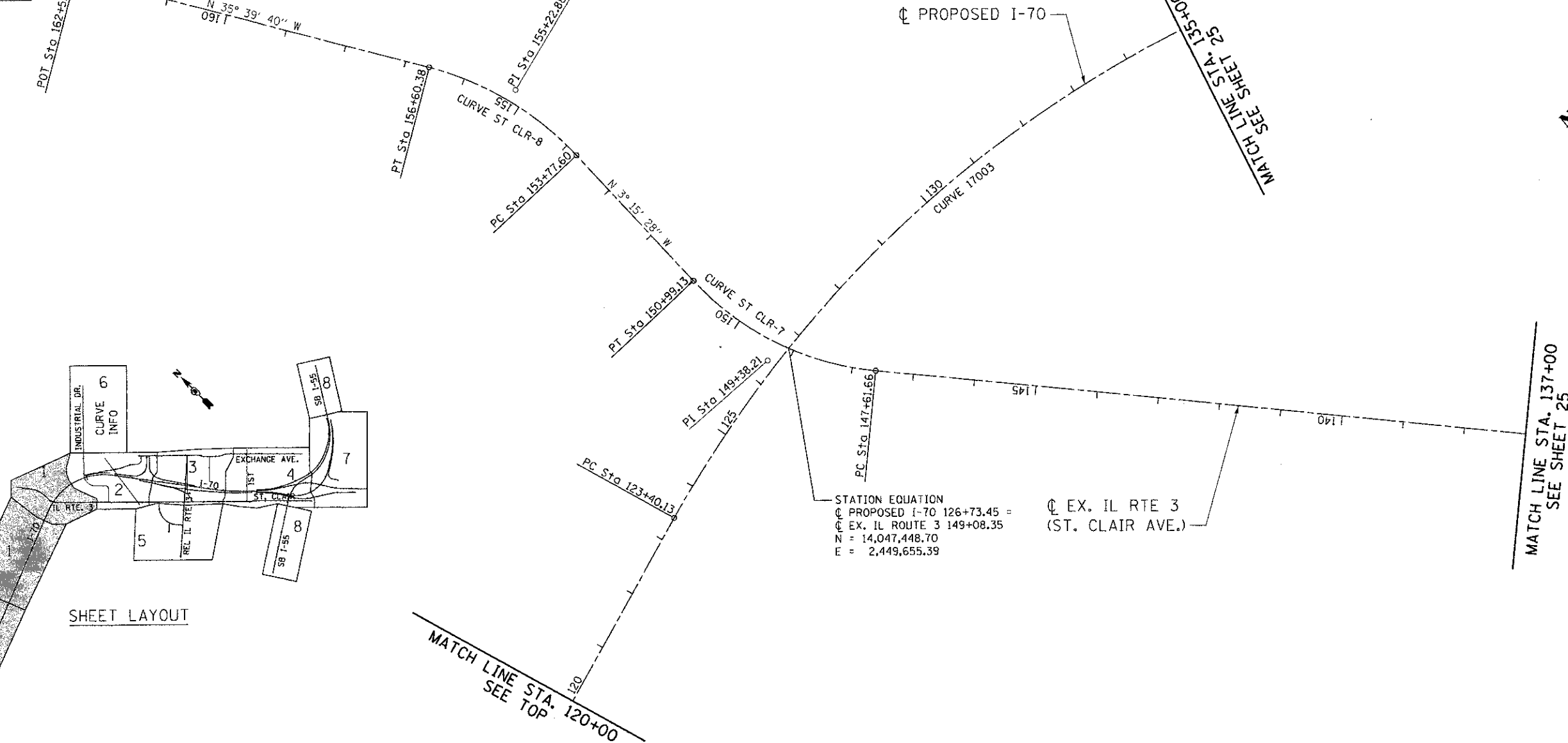
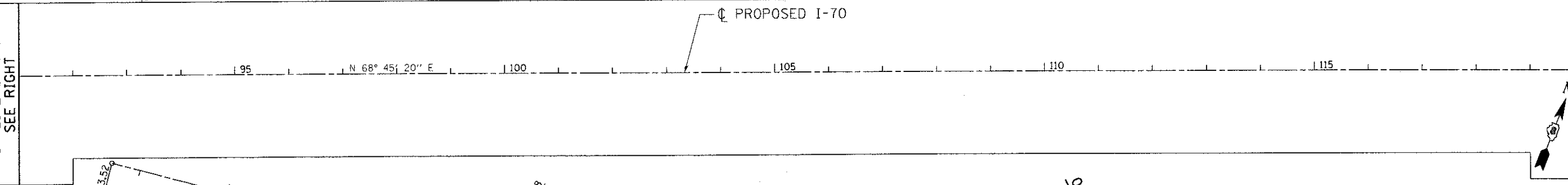
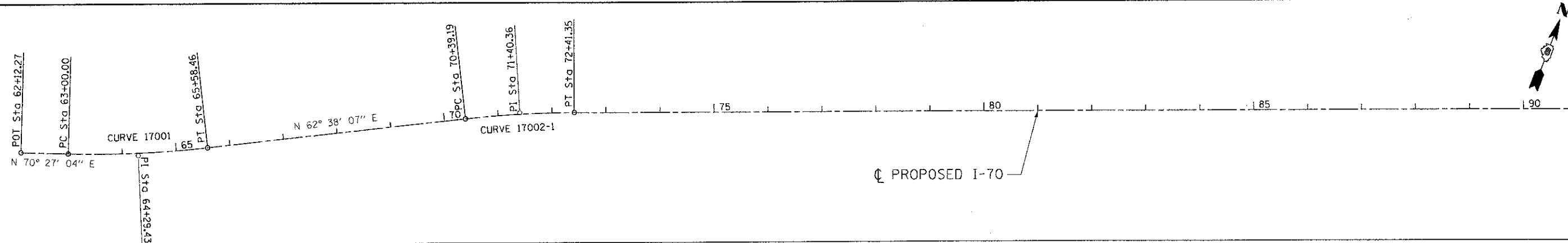


\\BCH2\11-ALIGNMENT2.DGN --UBCD001-11-ALIGNMENT2.DGN
 \\BCH2\11-ALIGNMENT2.DGN --UBCD001-11-ALIGNMENT2.DGN
 \\BCH2\11-ALIGNMENT2.DGN --UBCD001-11-ALIGNMENT2.DGN
 \\BCH2\11-ALIGNMENT2.DGN --UBCD001-11-ALIGNMENT2.DGN
 \\BCH2\11-ALIGNMENT2.DGN --UBCD001-11-ALIGNMENT2.DGN
 \\BCH2\11-ALIGNMENT2.DGN --UBCD001-11-ALIGNMENT2.DGN
 \\BCH2\11-ALIGNMENT2.DGN --UBCD001-11-ALIGNMENT2.DGN
 \\BCH2\11-ALIGNMENT2.DGN --UBCD001-11-ALIGNMENT2.DGN



STATION EQUATION
 C PROPOSED I-70 126+73.45 =
 C EX. IL ROUTE 3 149+08.35
 N = 14,047,448.70
 E = 2,449,655.39

NOTE:
 CURVE INFORMATION IS LISTED
 ON SHEET 29

FILE NAME =	USER NAME = \$USER\$	DESIGNED - JB	REVISED -
\$FILEL\$		DRAWN - JB	REVISED -
	PLOT SCALE = \$SCALE\$	CHECKED - ACL	REVISED -
	PLOT DATE = \$DATE\$	DATE - 06/29/12	REVISED -

STATE OF ILLINOIS
DEPARTMENT OF TRANSPORTATION
 I-70 CONNECTION

ALIGNMENTS, TIES & BENCHMARKS 1		F.A.P. RTE.	SECTION	COUNTY	TOTAL SHEETS	SHEET NO.
		998	82-1R	ST. CLAIR	294	24
SCALE: 1"=100'		SHEET NO. 1 OF 10 SHEETS		STA. TO STA.		
		FED. ROAD DIST. NO.		ILLINOIS FED. AID PROJECT		

CONTRACT NO. 76C43	
--------------------	--