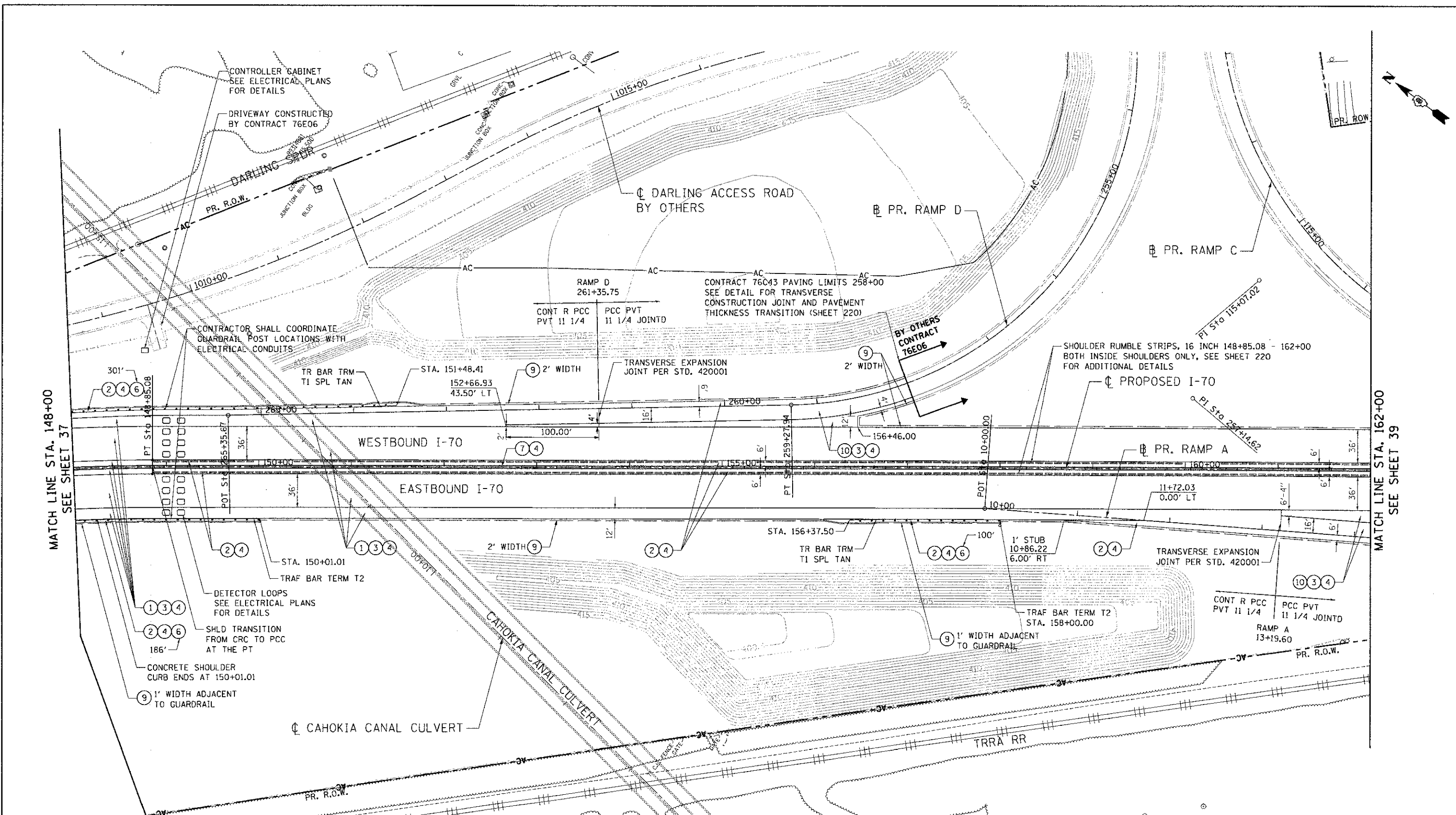


SUBCONTRACTOR: BOBBERLON, INC. ... CONTRACT NO. 76E06 ... SHEET NO. 3 OF 6 ...



LEGEND	
① CONTINUOUSLY REINFORCED PORTLAND CEMENT CONCRETE PAVEMENT 11 1/4"	⑥ STEEL PLATE BEAM GUARD RAIL, TYPE A, 6 FOOT POSTS
② PORTLAND CEMENT CONCRETE SHOULDERS 11 1/4"	⑦ CONC BAR 2F 42HT & CONC BARRIER BASE
③ STABILIZED SUBBASE - HOT-MIX ASPHALT, 4"	⑧ COMBINATION CONCRETE CURB AND GUTTER, TYPE M-4.24
④ AGGREGATE SUBGRADE IMPROVEMENT 12"	⑨ AGGREGATE SHOULDERS, TYPE B 6"
⑤ ANCHORAGE SLAB & BARRIER WALL (SEE DETAILS & BILL OF MATERIALS SHEETS 227 - 232)	⑩ PORTLAND CEMENT CONCRETE PAVEMENT 11 1/4" (JOINTED)

FILE NAME =	USER NAME = #USER#	DESIGNED - JB	REVISED -	<b>STATE OF ILLINOIS</b> <b>DEPARTMENT OF TRANSPORTATION</b> 1-70 CONNECTION				<b>PROPOSED I-70</b> <b>ROADWAY PLAN</b> <b>STA. 148+00 TO STA. 162+00</b>				F.A.P. RTE. 998	SECTION 82-1R	COUNTY ST. CLAIR	TOTAL SHEETS 294	SHEET NO. 38
#FILE#	PLOT SCALE = #SCALE#	DRAWN - JB	REVISED -					SCALE: 1"=50' SHEET NO. 3 OF 6 SHEETS STA. TO STA.				CONTRACT NO. 76C43 FED. ROAD DIST. NO. ILLINOIS FED. AID PROJECT				
<b>TENG</b> & ASSOCIATES, INC. ENGINEERS/ARCHITECTS/PLANNERS CHICAGO, ILLINOIS		CHECKED - ACL	REVISED -	DATE - 06/29/12 REVISED -												