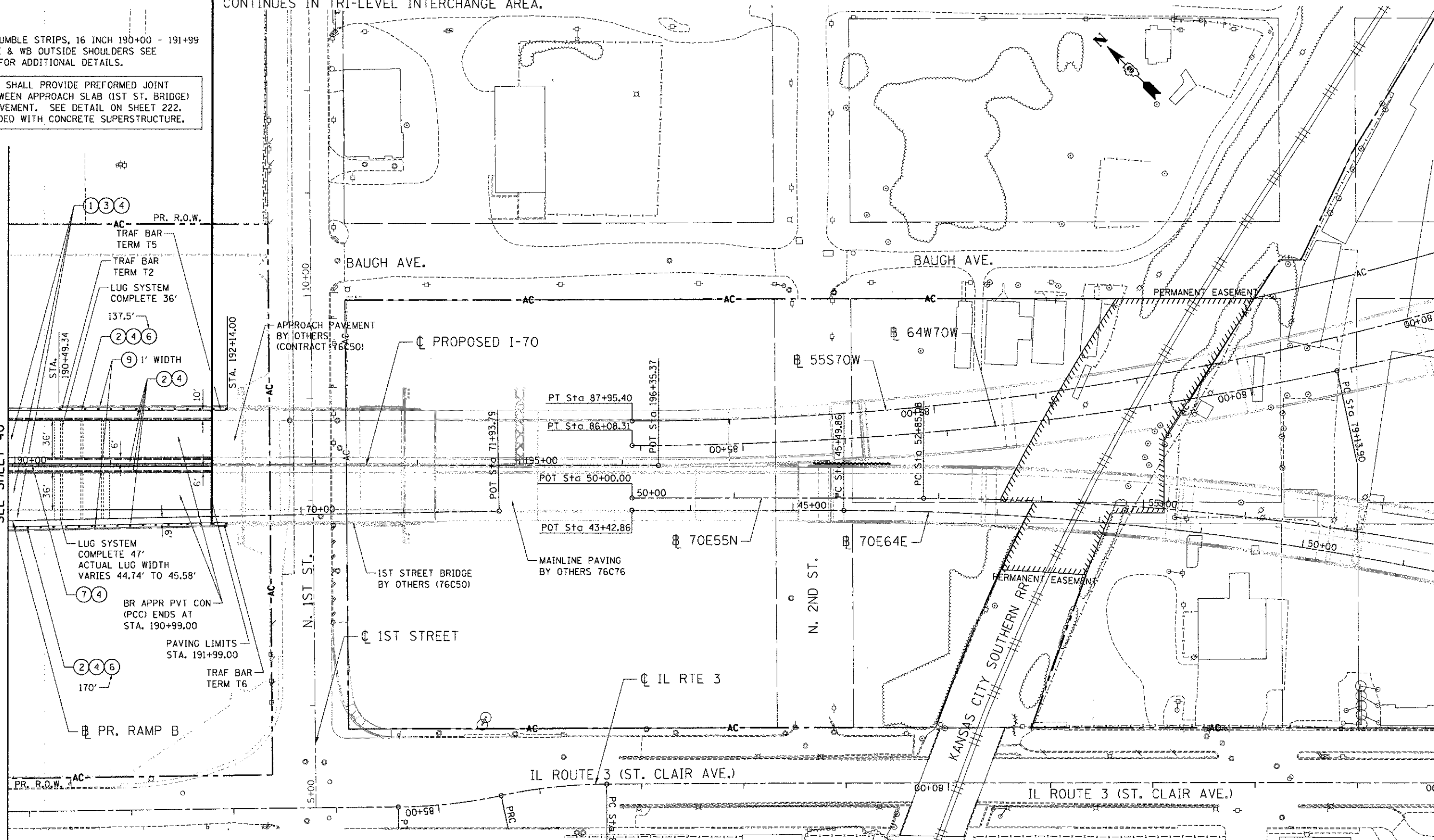


CONTRACT 76C43 PAVING LIMITS
END AT STA 191+99.00

PAVING BY OTHERS (CONTRACT 76C50)
PROPOSED SIGNING AND PAVEMENT MARKING
CONTINUES IN TRI-LEVEL INTERCHANGE AREA.

- NOTES:
- SHOULDER RUMBLE STRIPS, 16 INCH 190+00 - 191+99 BOTH INSIDE & WB OUTSIDE SHOULDERS SEE SHEET 220 FOR ADDITIONAL DETAILS.
 - CONTRACTOR SHALL PROVIDE PREFORMED JOINT SEALER BETWEEN APPROACH SLAB (1ST ST. BRIDGE) AND CRC PAVEMENT. SEE DETAIL ON SHEET 222. COST INCLUDED WITH CONCRETE SUPERSTRUCTURE.

MATCH LINE STA. 190+00
SEE SHEET 40



- LEGEND**
- | | |
|--|--|
| (1) CONTINUOUSLY REINFORCED PORTLAND CEMENT CONCRETE PAVEMENT 11 1/4" | (6) STEEL PLATE BEAM GUARD RAIL, TYPE A, 6 FOOT POSTS |
| (2) PORTLAND CEMENT CONCRETE SHOULDERS 11 1/4" | (7) CONC BAR 2F 42HT & CONC BARRIER BASE |
| (3) STABILIZED SUBBASE - HOT-MIX ASPHALT, 4" | (8) COMBINATION CONCRETE CURB AND GUTTER, TYPE M-4.24 |
| (4) AGGREGATE SUBGRADE IMPROVEMENT 12" | (9) AGGREGATE SHOULDERS, TYPE B 6" |
| (5) ANCHORAGE SLAB & BARRIER WALL (SEE DETAILS & BILL OF MATERIALS SHEETS 227 - 232) | (10) PORTLAND CEMENT CONCRETE PAVEMENT 11 1/4" (JOINTED) |

FILE NAME =	USER NAME = #USER#	DESIGNED - JB	REVISED -	STATE OF ILLINOIS DEPARTMENT OF TRANSPORTATION I-70 CONNECTION	PROPOSED I-70 ROADWAY PLAN STA. 190+00 TO TRI-LEVEL	F.A.P. RTE.	SECTION	COUNTY	TOTAL SHEETS	SHEET NO.
#FILE#	PLOT SCALE = #SCALE#	DRAWN - JB	REVISED -			998	82-1R	ST. CLAIR	294	41
TENG & ASSOCIATES, INC. ENGINEERS/ARCHITECTS/PLANNERS CHICAGO, ILLINOIS	PLOT DATE = #DATE#	CHECKED - ACL	REVISED -			CONTRACT NO. 76C43				
DATE - 06/29/12					REVISED -	SCALE: 1"=50'	SHEET NO. 6 OF 6 SHEETS	STA.	TO STA.	FED. ROAD DIST. NO. ILLINOIS FED. AID PROJECT