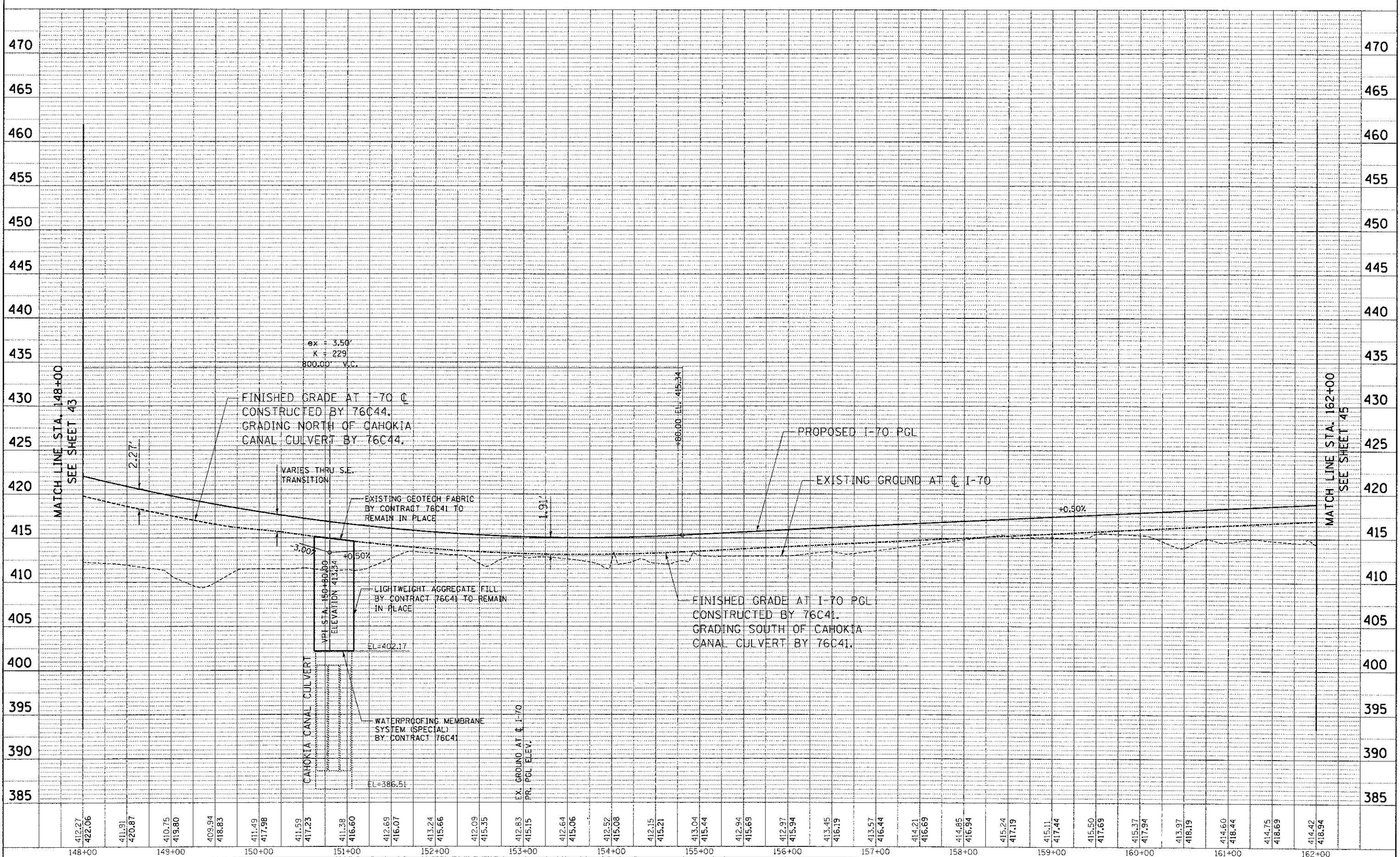


PLAN	SURVEYED	BY	DATE
NOTE BOOK	ALIGNED		
NO.	CHECKED		
	BY		
	DATE		

PROFILE	SURVEYED	BY	DATE
NOTE BOOK	GRADES CHECKED		
NO.	BLM. NOTED		
	STRUCTURE NO. X/Y/Z		
	CONTRACT NO. X-Y-Z		

6-27-2012, 9:53:34 BONDHILLI  
 \\FS-004\A\AVIVAL\J.D. FRANKS\72220-20886-001\CIVIL\AND 119 ALL CONTRACTS\CONTRACT 08-08-0001-09-SH-PROF-14800.DGN



$e_x = 3.50'$   
 $K = 229$   
 800.00' V.C.

FINISHED GRADE AT I-70  $\phi$   
 CONSTRUCTED BY 76C44.  
 GRADING NORTH OF CAHOKIA  
 CANAL CULVERT BY 76C44.

PROPOSED I-70 PGL

EXISTING GROUND AT  $\phi$  I-70

VARIES THRU S.E.  
 TRANSITION

EXISTING GEOTECH FABRIC  
 BY CONTRACT 76C41 TO  
 REMAIN IN PLACE

LIGHTWEIGHT AGGREGATE FILL  
 BY CONTRACT 76C41 TO REMAIN  
 IN PLACE

FINISHED GRADE AT I-70 PGL  
 CONSTRUCTED BY 76C41.  
 GRADING SOUTH OF CAHOKIA  
 CANAL CULVERT BY 76C41.

-3.00%

+0.50%

+0.50%

CAHOKIA CANAL CULVERT  
 VPI STA. 149+40.00  
 ELEVATION 413.54

WATERPROOFING MEMBRANE  
 SYSTEM (SPECIAL)  
 BY CONTRACT 76C41

EX. GROUND AT  $\phi$  I-70  
 PR. PGL ELEV.

EL=402.17

EL=386.51

86.00' EL. 415.34

1.91'

2.27'

FILE NAME =	USER NAME = #USER#	DESIGNED - JB	REVISED -	<b>STATE OF ILLINOIS</b> <b>DEPARTMENT OF TRANSPORTATION</b> I-70 CONNECTION	<b>PROPOSED I-70</b> <b>ROADWAY PROFILE</b> <b>STA. 148+00 TO STA. 162+00</b>	F.A.P. RTE. 998	SECTION 82-1R	COUNTY ST. CLAIR	TOTAL SHEETS 294	SHEET NO. 44
#FILEL#	PLOT SCALE = #SCALE#	DRAWN - JB	REVISED -			CONTRACT NO. 76C43				
	PLOT DATE = #DATE#	CHECKED - ACL	REVISED -			FED. ROAD DIST. NO. ILLINOIS FED. AID PROJECT				
		DATE - 06/29/12	REVISED -			SCALE: HORIZ. 1"=50' VERT. 1"=5'				

