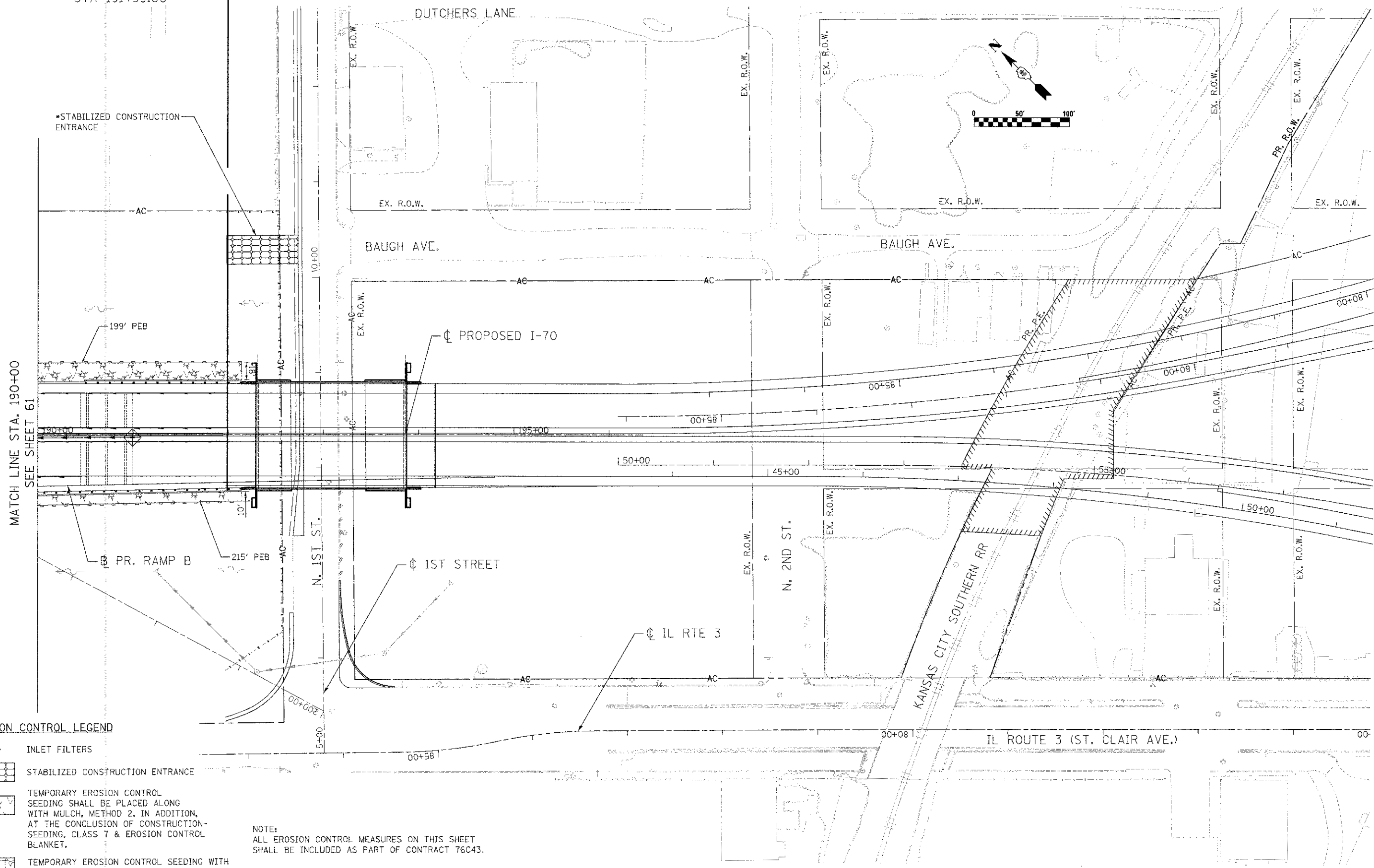

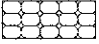
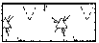

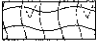


CONTRACT 76C43
STA 191+99.00

CONTRACT 76C50



MATCH LINE STA. 190+00
SEE SHEET 61

- EROSION CONTROL LEGEND**
-  INLET FILTERS
 -  STABILIZED CONSTRUCTION ENTRANCE
 -  TEMPORARY EROSION CONTROL SEEDING SHALL BE PLACED ALONG WITH MULCH, METHOD 2. IN ADDITION, AT THE CONCLUSION OF CONSTRUCTION SEEDING, CLASS 7 & EROSION CONTROL BLANKET.
 -  TEMPORARY EROSION CONTROL SEEDING WITH TEMPORARY EROSION CONTROL BLANKET
 -  PERIMETER EROSION BARRIER (PEB)

NOTE:
ALL EROSION CONTROL MEASURES ON THIS SHEET SHALL BE INCLUDED AS PART OF CONTRACT 76C43.

*THIS CONSTRUCTION ENTRANCE SHALL BE MAINTAINED UNTIL CONSTRUCTION IS COMPLETE. THE ENTRANCE SHALL BE REMOVED BY THE END OF THE CONTRACT.



USER NAME = #USER#	DESIGNED - AS	REVISED -
PLOT SCALE = #SCALE#	DRAWN - AS	REVISED -
PLOT DATE = #DATE#	CHECKED - ST	REVISED -
	DATE - 06/29/2012	REVISED -

STATE OF ILLINOIS
DEPARTMENT OF TRANSPORTATION
I-70 CONNECTION

PROPOSED I-70
EROSION CONTROL
STA. 190+00 TO STA. 196+35

SCALE: 1"=50' SHEET NO. 5 OF 5 SHEETS STA. TO STA.

F.A.P. RTE. 998	SECTION 82-1R	COUNTY ST. CLAIR	TOTAL SHEETS 294	SHEET NO. 62
FED. ROAD DIST. NO. ILLINOIS FED. AID PROJECT			CONTRACT NO. 76C43	