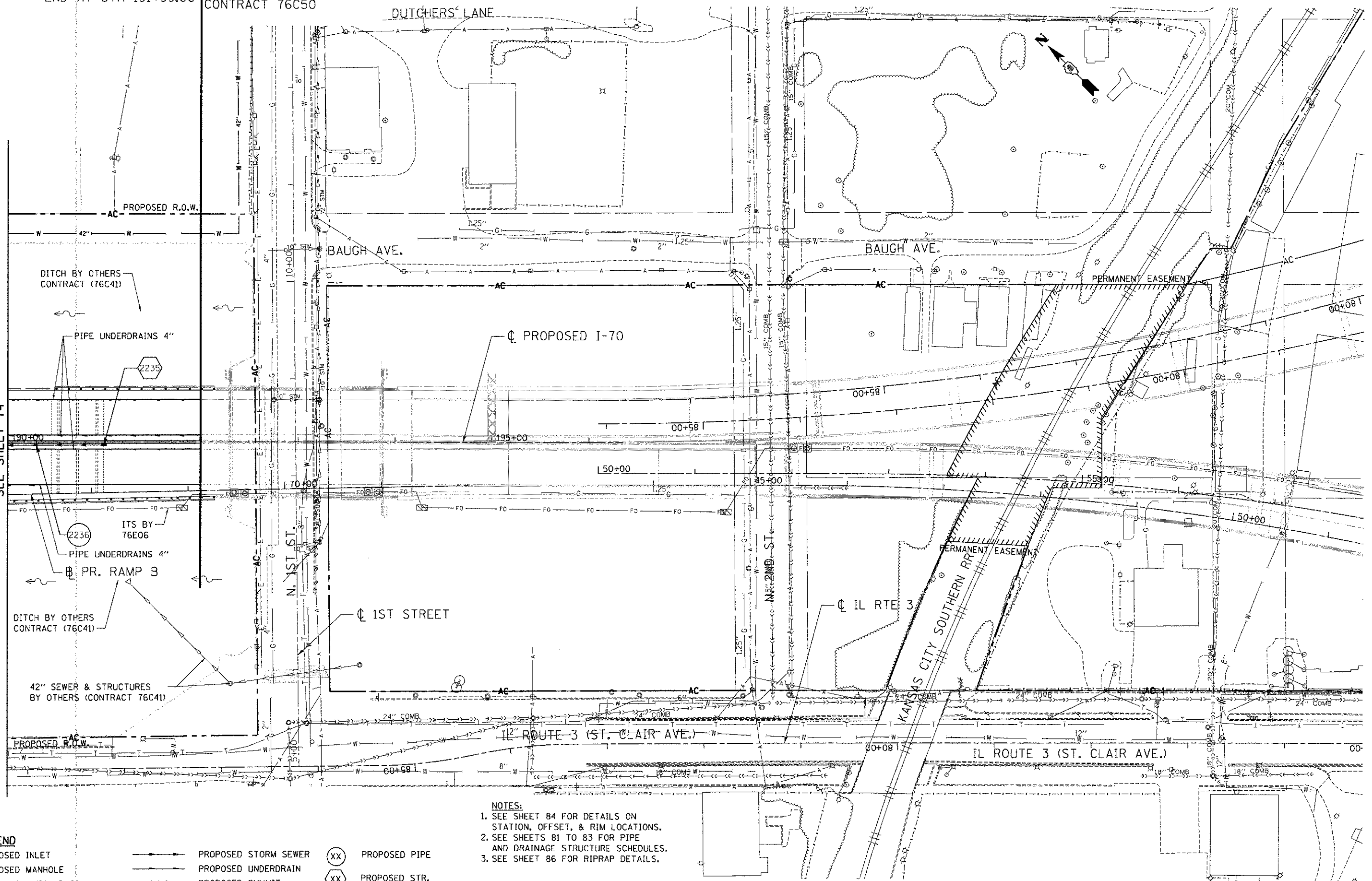


PR. DRAINAGE LIMITS PAVEMENT MARKING & SIGNING ONLY
 END AT STA 191+99.00 DRAINAGE BY OTHERS
 CONTRACT 76C50

MATCH LINE STA. 190+00
 SEE SHEET 74



- NOTES:**
- SEE SHEET 84 FOR DETAILS ON STATION, OFFSET, & RIM LOCATIONS.
 - SEE SHEETS 81 TO 83 FOR PIPE AND DRAINAGE STRUCTURE SCHEDULES.
 - SEE SHEET 86 FOR RIPRAP DETAILS.

LEGEND		PROPOSED PIPE	
—	PROPOSED INLET	—	PROPOSED PIPE
○	PROPOSED MANHOLE	—	PROPOSED UNDERDRAIN
●	PROPOSED CATCH BASIN	—	PROPOSED SUMMIT
▶	PROPOSED CULVERTY END SECTION	—	PROPOSED DITCH
→	PROPOSED SWALE	—	CONC HDWL FOR P DRAIN
		XX	PROPOSED STR.
		XX ^{GR}	PROPOSED GRATE

FILE NAME = #FILE#
 USER NAME = #USER#
 DESIGNED - MDN
 DRAWN - MDN
 CHECKED - TKL
 DATE - 06/29/12

REVISIONS:
 REVISED -
 REVISED -
 REVISED -
 REVISED -

STATE OF ILLINOIS
 DEPARTMENT OF TRANSPORTATION
 I-70 CONNECTION

PROPOSED I-70
 PROPOSED DRAINAGE & UTILITIES
 STA. 190+00 TO TRI-LEVEL
 SCALE: 1"=50'
 SHEET NO. 6 OF 6 SHEETS
 STA. TO STA.

F.A.P. RTE.	SECTION	COUNTY	TOTAL SHEETS	SHEET NO.
99B	82-1R	ST. CLAIR	294	75
CONTRACT NO. 76C43			ILLINOIS FED. AID PROJECT	