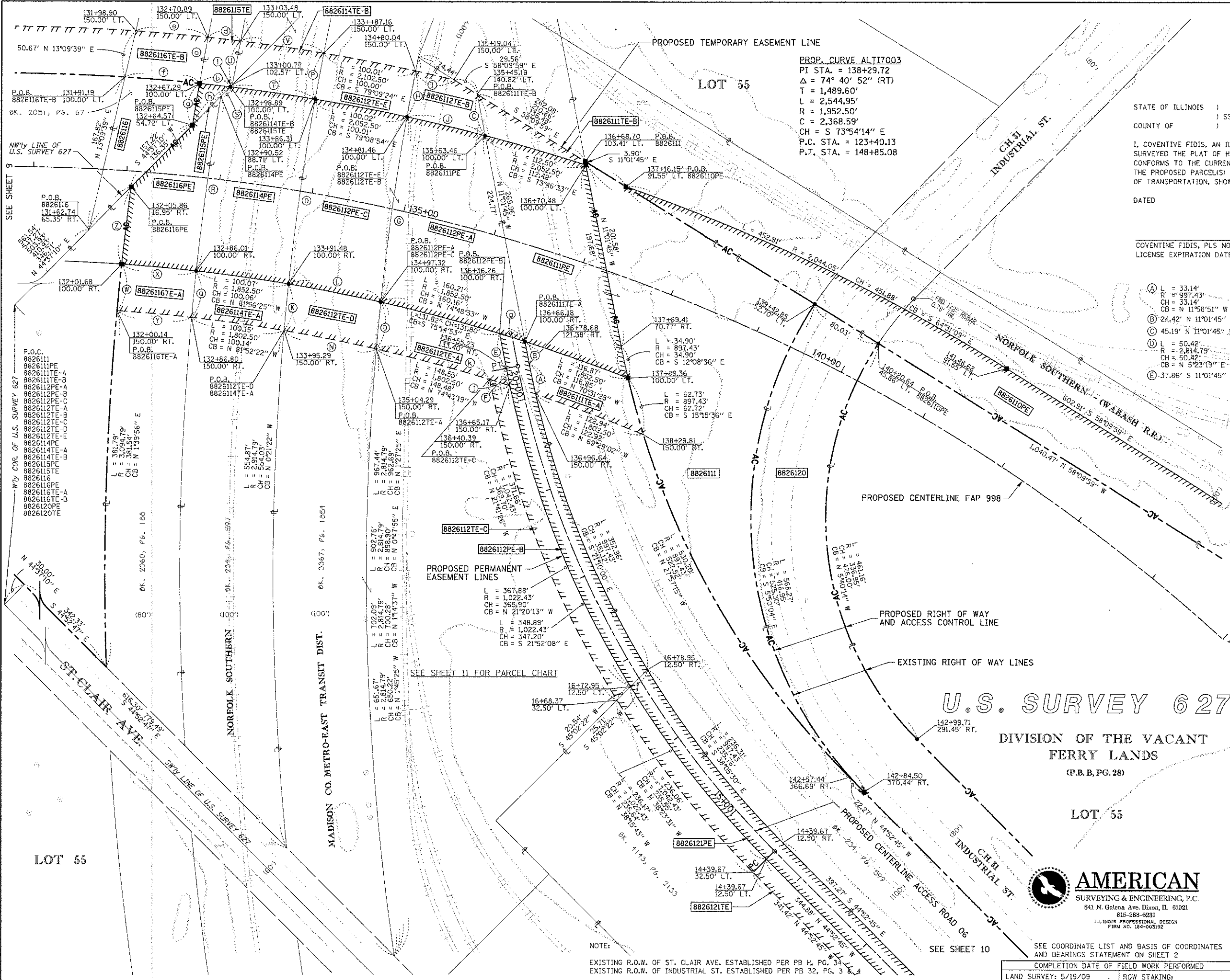


PART OF U.S. SURVEY 627, SECTION 1, T2N, R10W, OF THE 3RD PM, ST. CLAIR COUNTY, ILLINOIS



STATE OF ILLINOIS)
COUNTY OF)

I, COVENTINE FIDIS, AN ILLINOIS PROFESSIONAL LAND SURVEYOR, STATE THAT I HAVE SURVEYED THE PLAT OF HIGHWAY SHOWN HEREON AND THAT THIS PROFESSIONAL SERVICE CONFORMS TO THE CURRENT ILLINOIS MINIMUM STANDARDS FOR A BOUNDARY SURVEY FOR THE PROPOSED PARCEL(S) TO BE ACQUIRED BY THE STATE OF ILLINOIS, DEPARTMENT OF TRANSPORTATION, SHOWN HEREON.

DATED _____
COVENTINE FIDIS, PLS NO. 35-2159
LICENSE EXPIRATION DATE: 11/30/2010



- (A) L = 33.14'
R = 997.43'
CH = 33.14'
CB = N 11°58'51" W
- (B) 24.42' N 11°01'45" W
- (C) 45.19' N 11°01'45" W
- (D) L = 50.42'
R = 2,814.79'
CH = 50.42'
CB = N 5°23'19" E
- (E) 37.86' S 11°01'45" E
- (F) L = 18.99'
R = 1,022.43'
CH = 18.99'
CB = N 11°33'40" E
- (G) L = 200.67'
R = 2,814.79'
CH = 200.63'
CB = N 7°56'39" E
- (H) L = 50.02'
R = 2,814.79'
CH = 50.02'
CB = N 10°29'45" E
- (I) L = 42.00'
R = 2,102.50'
CH = 42.00'
CB = S 77°13'18" E
- (J) L = 86.20'
R = 2,052.50'
CH = 86.20'
CB = N 76°32'57" W
- (K) L = 50.13'
R = 2,914.79'
CH = 50.13'
CB = N 5°35'25" E
- (L) L = 100.42'
R = 1,802.50'
CH = 100.41'
CB = N 78°50'23" W
- (M) L = 200.11'
R = 1,802.50'
CH = 200.07'
CB = N 78°40'54" W
- (N) L = 50.01'
R = 3,014.79'
CH = 50.01'
CB = N 5°40'24" E
- (O) L = 50.01'
R = 3,014.79'
CH = 50.01'
CB = N 5°40'24" E
- (P) L = 188.80'
R = 3,014.79'
CH = 188.76'
CB = N 7°56'33" E
- (Q) L = 14.30' N 44°37'10" E
- (R) L = 26.38'
R = 1,802.50'
CH = 26.38'
CB = S 72°46'14" E
- (S) L = 91.90'
R = 2,052.50'
CH = 91.89'
CB = S 81°49'38" E
- (T) L = 28.88'
R = 1,802.50'
CH = 28.88'
CB = S 72°43'30" E
- (U) L = 47.52'
R = 3,004.79'
CH = 47.52'
CB = N 10°27'50" E
- (V) L = 90.11'
R = 2,102.50'
CH = 90.10'
CB = S 81°44'50" E
- (W) L = 50.02'
R = 3,094.79'
CH = 50.02'
CB = N 10°29'45" E
- (X) L = 80.02'
R = 1,802.50'
CH = 80.01'
CB = N 84°43'30" W
- (Y) L = 80.01'
R = 1,802.50'
CH = 80.01'
CB = N 84°43'30" W
- (Z) L = 84.15'
R = 3,094.79'
CH = 84.15'
CB = N 8°53'44" E
- (aa) L = 45.37'
R = 3,094.79'
CH = 45.37'
CB = N 9°29'38" E
- (ab) L = 33.22'
R = 3,094.79'
CH = 33.22'
CB = N 8°34'25" E
- (ac) L = 50.15'
R = 1,039.79'
CH = 50.15'
CB = N 10°23'38" E
- (ad) L = 35.10'
R = 2,102.50'
CH = 35.10'
CB = S 83°27'12" E
- (ae) L = 77.51'
R = 2,102.50'
CH = 77.51'
CB = S 84°59'16" E
- (af) L = 79.99'
R = 2,052.50'
CH = 79.99'
CB = N 85°09'13" W
- (ag) L = 26.38'
R = 1,802.50'
CH = 26.38'
CB = S 72°46'14" E
- (ah) L = 28.88'
R = 1,802.50'
CH = 28.88'
CB = S 72°43'30" E
- (ai) L = 125.65'
R = 1,802.50'
CH = 125.62'
CB = S 75°05'08" E
- (aj) L = 3.25' S 44°37'10" W
- (ak) L = 22.88'
R = 1,802.50'
CH = 22.88'
CB = S 72°43'30" E
- (al) L = 125.65'
R = 1,802.50'
CH = 125.62'
CB = S 75°05'08" E

U.S. SURVEY 627

DIVISION OF THE VACANT FERRY LANDS
(P.B.B. PG. 28)

LOT 55

AMERICAN
SURVEYING & ENGINEERING, P.C.
841 N. Galena Ave. Dixon, IL 61021
815-288-6281
ILLINOIS PROFESSIONAL DESIGN
FIRM NO. 184-063192

ILLINOIS DEPARTMENT OF TRANSPORTATION
PLAT OF HIGHWAYS
FAP ROUTE 998
SECTION 82-2-1HVB
ST. CLAIR COUNTY
JOB NO. R-98-026-08
STATION 131+00 TO STATION 145+00

SCALE: 1" = 50'

SHEET 10 OF

F.A.P. R.T.E.	SECTION	COUNTY	TOTAL SHEETS	SHEET NO.
	82-1R	ST. CLAIR	294	110

CONTRACT NO. 76C43

FED. ROAD DIST. NO. ILLINOIS FED. AID PROJECT