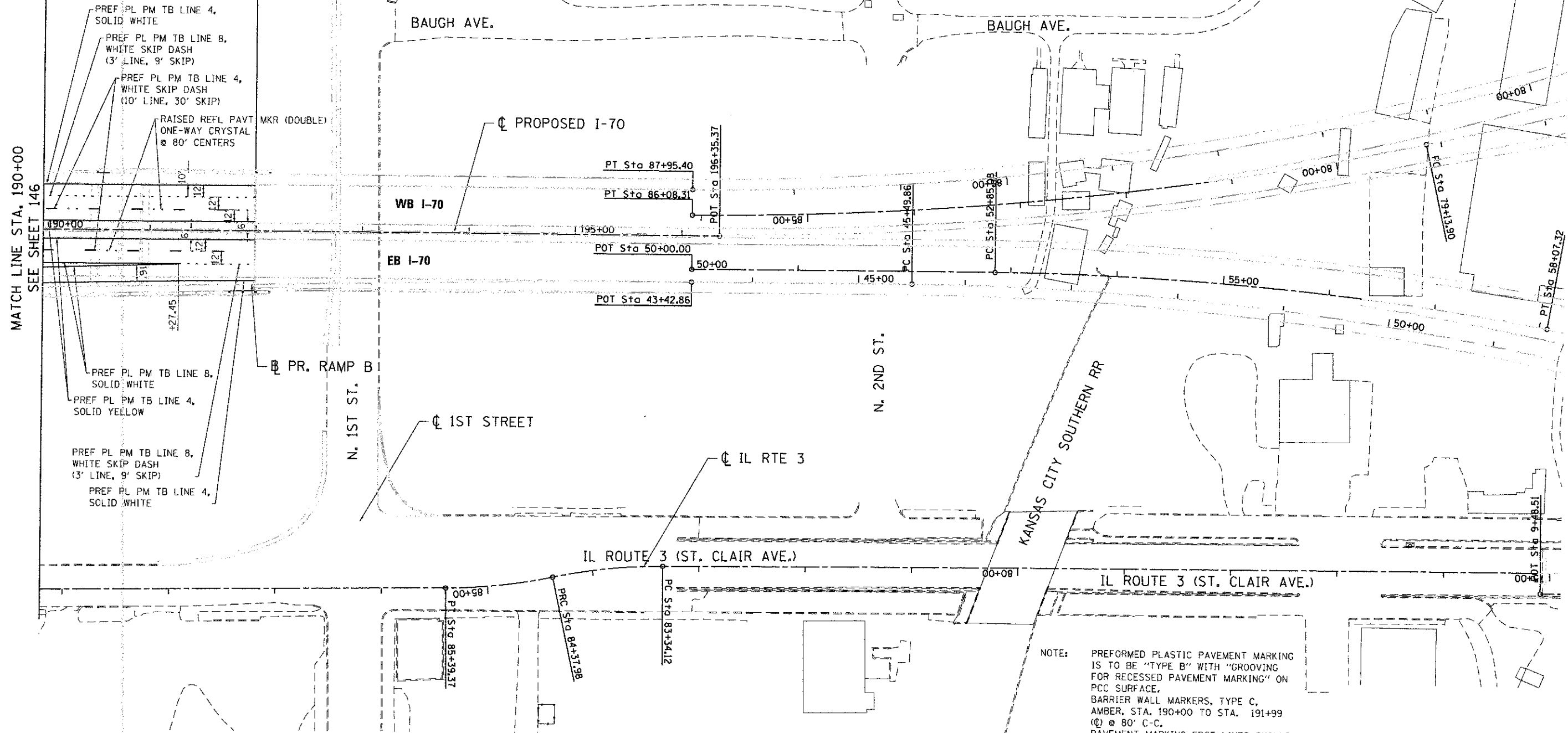


LIMITS OF I-70  
PAVEMENT MARKINGS  
STA 191+99.00

SEE ADDITIONAL PAVEMENT MARKING SHEETS FOR PAVEMENT MARKINGS SOUTH OF STA. 191+99



NOTE: PREFORMED PLASTIC PAVEMENT MARKING IS TO BE "TYPE B" WITH "GROOVING FOR RECESSED PAVEMENT MARKING" ON PCC SURFACE. BARRIER WALL MARKERS, TYPE C, AMBER, STA. 190+00 TO STA. 191+99 (C) @ 80' C-C. PAVEMENT MARKING EDGE LINES SHOULD BE CUT AND LAPPED AT A MINIMUM OF 100' INTERVALS

Kaskaskia Engineering Group, LLC



USER NAME = #USER#	DESIGNED - SMS	REVISED -
FILE NAME = #FILE#	DRAWN - JLT	REVISED -
PLOT SCALE = #SCALE#	CHECKED - LDC	REVISED -
PLOT DATE = #DATE#	DATE - 06/29/12	REVISED -

**STATE OF ILLINOIS  
DEPARTMENT OF TRANSPORTATION**  
I-70 CONNECTION

<b>PROPOSED I-70 PAVEMENT MARKING PLAN STA. 190+00 TO 191+99</b>	
SCALE: 1"=50'	SHEET NO. 6 OF 7 SHEETS STA. TO STA.

F.A.P. RTE. 998	SECTION 82-1R	COUNTY ST. CLAIR	TOTAL SHEETS 294	SHEET NO. 147
FED. ROAD DIST. NO. [ILLINOIS] FED. AID PROJECT CONTRACT NO. 76C43				