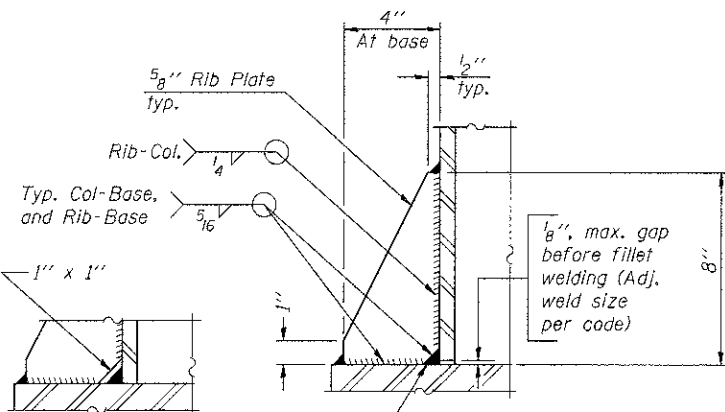
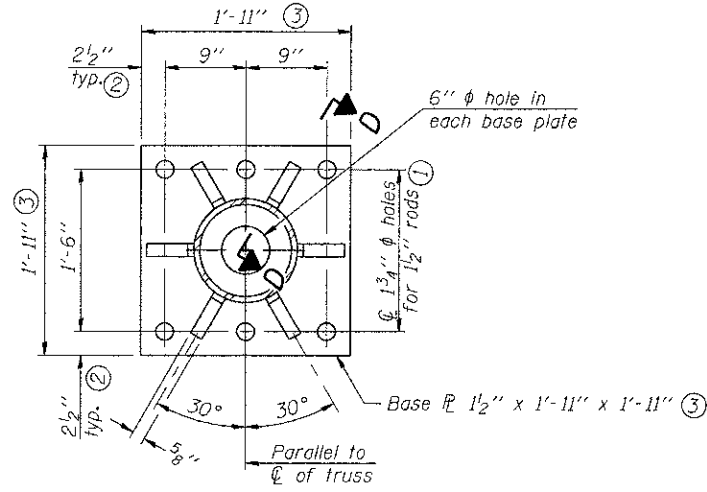
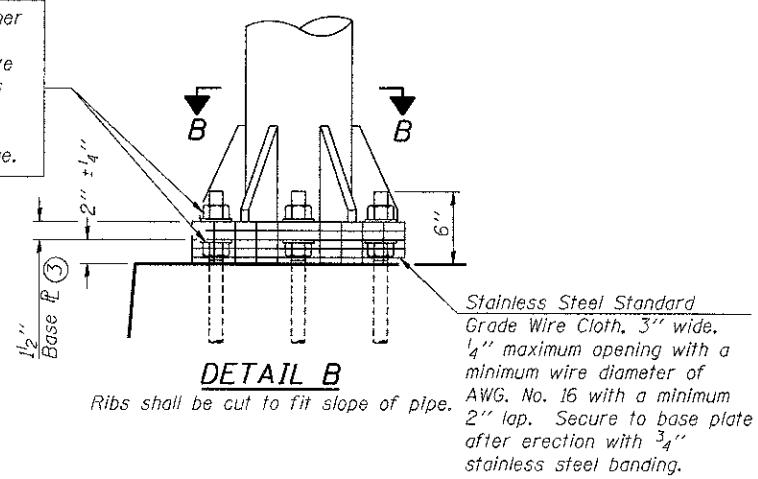
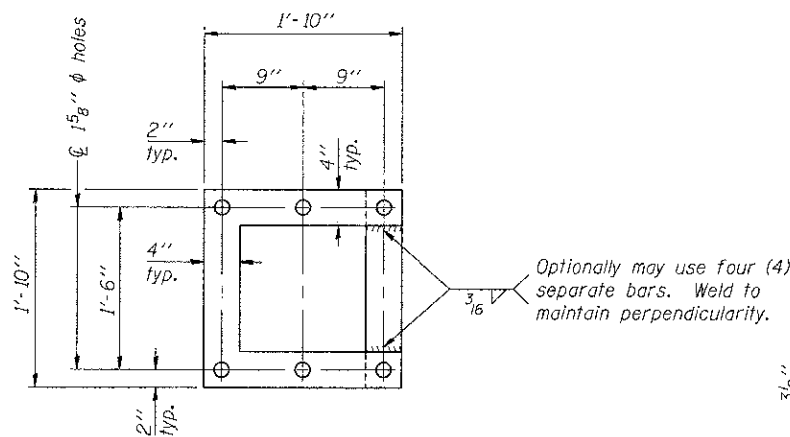


Hexagon locknut and washer (top), leveling nut and washer (bottom), Galvanize per AASHTO M232. Nuts shall each be tightened against base plate with 200 lb.-ft. minimum torque.

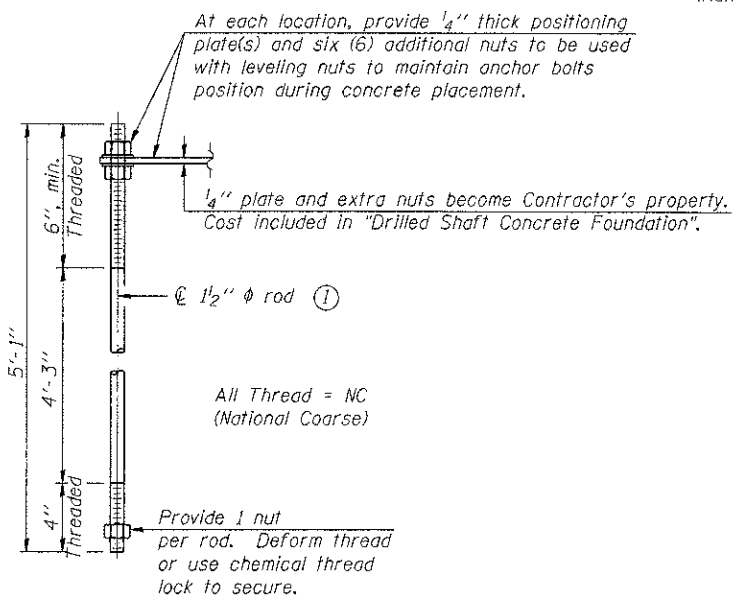


\*\* Alternate detail if welding col. to base plate first, then snip inside corner of ribs. Terminate weld on rib 1/4" from snip.

**SECTION D-D**



**POSITIONING PLATE(S)**



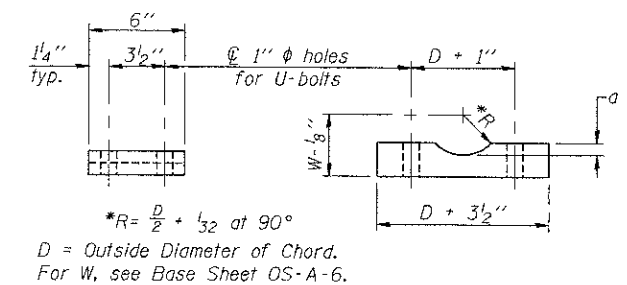
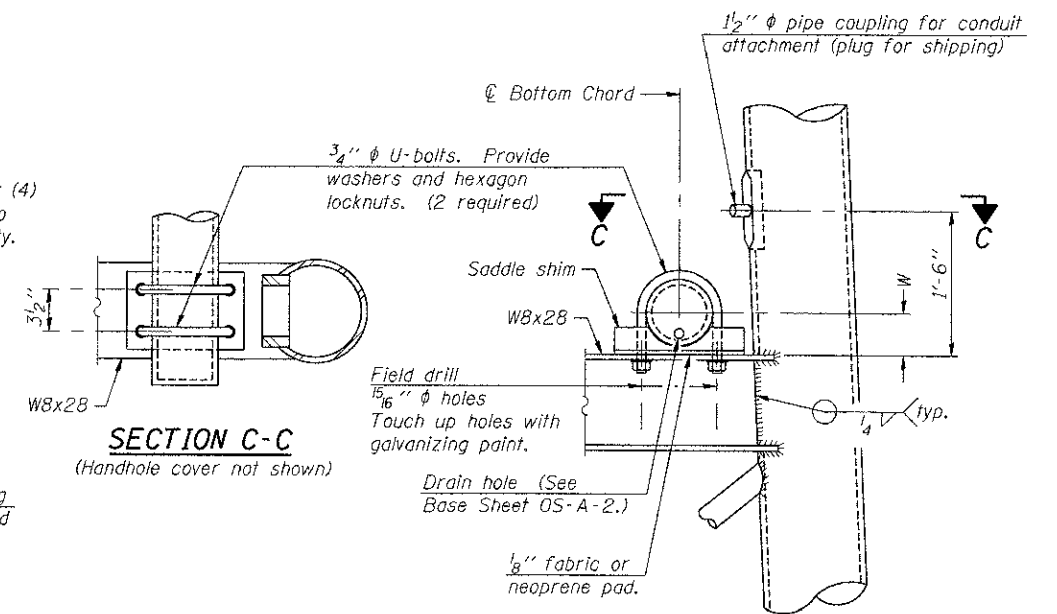
**ANCHOR ROD DETAIL**

Anchor rods shall conform to ASTM F1554 Grade 105 Galvanize upper 12" minimum per AASHTO M232. No welding shall be permitted on rods.

**TYPE III-A TRUSS  
12"  $\phi$  PIPE SUPPORT FRAME DETAILS**

Notes:  
For Type III-A Truss spans greater than 150 ft. and up to 160 ft.:

- ① 1 3/4"  $\phi$  rod, 2"  $\phi$  holes
- ② 2 3/4" edge distance
- ③ Base Pl. 1 5/8" x 1'-11 1/2" x 1'-11 1/2"



Truss Chord Nominal Dia.	a
7"	1"
8 1/2"	1 1/4"
9"	1 3/8"

**SADDLE SHIM DETAIL**  
ASTM B26 Alloy 356-F  
or  
ASTM B209 Alloy 6061-T651  
(4 required per sign truss)

C:\ORCON\08-DESIGN\08-03\STRUCT\CAD\01-DESIGN\STRUCTURE\SHEET\08-03-SHT-1-SIGN-F-01.dwg  
 6-27-2012, 9:56:43 AM  
 BDKHJLD

OS4-A-8aA

6-1-12

FILE NAME =	USER NAME = #USER#	DESIGNED - MDJ	REVISED -	<b>STATE OF ILLINOIS DEPARTMENT OF TRANSPORTATION</b> 1-70 CONNECTION	<b>OVERHEAD SIGN STRUCTURES SUPPORT FRAME FOR TYPE III-A ALUMINUM TRUSS</b>	F.A.P. RTE. 998	SECTION 82-1R	COUNTY ST. CLAIR	TOTAL SHEETS 294	SHEET NO. 187		
#FILE#	PLOT SCALE = #SCALE#	CHECKED - JLR	REVISED -			SCALE:	SHEET NO. 8 OF 14 SHEETS	STA.	TO STA.	FED. ROAD DIST. NO.	ILLINOIS FED. AID PROJECT	
TENG & ASSOCIATES, INC. ENGINEERS/ARCHITECTS/PLANNERS CHICAGO, ILLINOIS	PLOT DATE = #DATE#	DATE - 06/29/12	REVISED -			CONTRACT NO. 76C43						