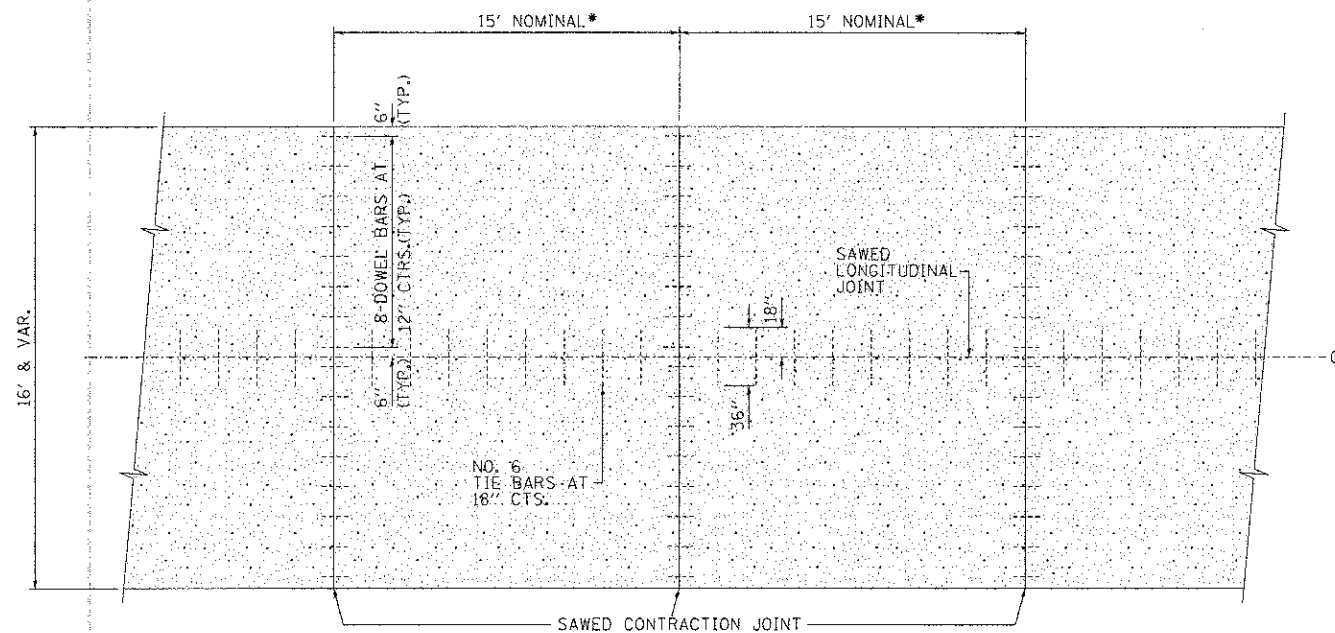


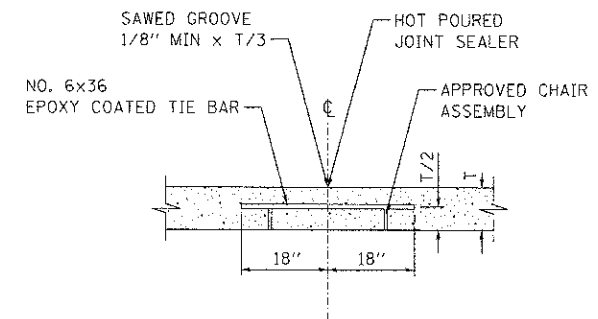
SECTION

- NOTES:
- CENTERLINE JOINT REMAINS IN THE CENTER WHEN RAMP TRANSITIONS TO TWO (2) LANES AT 12' EACH.
  - ALL BARS TO BE EPOXY COATED.

\* THE 15' DIMENSION SHALL BE ADJUSTED TO 12' MIN. TO 18' MAX. WHEN PLACED ADJACENT TO EXISTING PCC PAVEMENT STRUCTURE SO THAT JOINTS ARE IN PROLONGATION.



PLAN



SAWED LONGITUDINAL JOINT

\BDC\CON-94-NOTIF.LGN, \BDC\CON-88-BORDER.LGN, \BDC\CON-88-CONTRACTS\CONNS\CONNS\CONTRACT 08\BDC\CON-88-SIT-PP\DETAIL 4.DGN  
 6-27-2012 10:56:38 BONDHULLD \VF5-0844\VAR\VAULT.D TRANS-07\2202\208668-08\CVIL\CAD\VAR ALL CONTRACTS\CONNS\CONNS\CONTRACT 08\BDC\CON-88-SIT-PP\DETAIL 4.DGN

FILE NAME =  
 USER NAME = #USER#  
 PLOT SCALE = #SCALE#  
 PLOT DATE = #DATE#

DESIGNED - JB  
 DRAWN - JFS  
 CHECKED - JB  
 DATE - 06/29/12

REVISED -  
 REVISED -  
 REVISED -  
 REVISED -

**STATE OF ILLINOIS**  
**DEPARTMENT OF TRANSPORTATION**  
 I-70 CONNECTION

**DETAIL FOR CENTERLINE SAW CUT 16' & VARIABLE JOINTED PCC PAVEMENT FOR RAMPS**

SCALE: N.T.S. SHEET NO. 1 OF 8 SHEETS STA. TO STA.

F.A.P. RTE.	SECTION	COUNTY	TOTAL SHEETS	SHEET NO.
998	82-IR	ST. CLAIR	294	214
CONTRACT NO. 76C43			ILLINOIS FED. AID PROJECT	