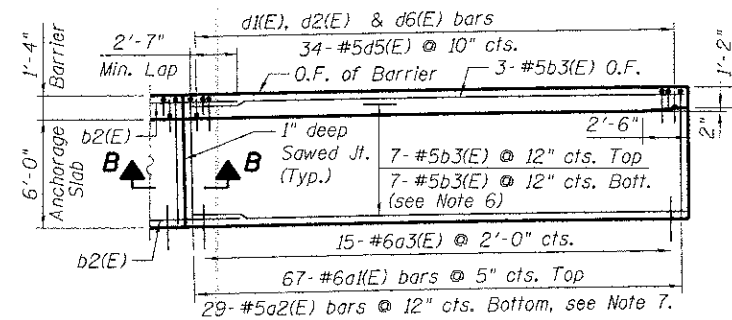
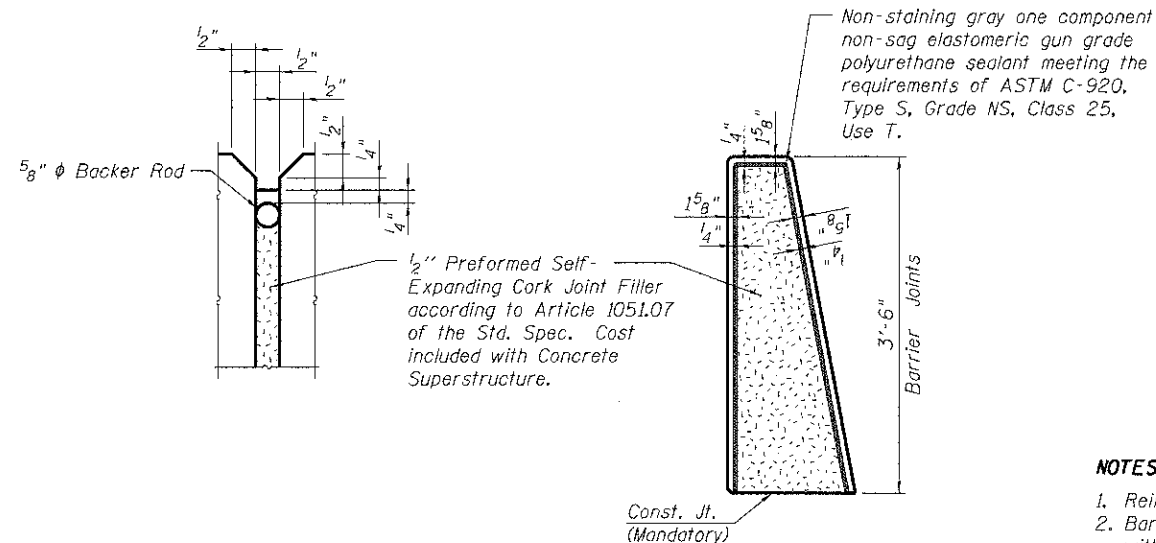


BARRIER INSIDE ELEVATION - UNIT B
(Looking North)

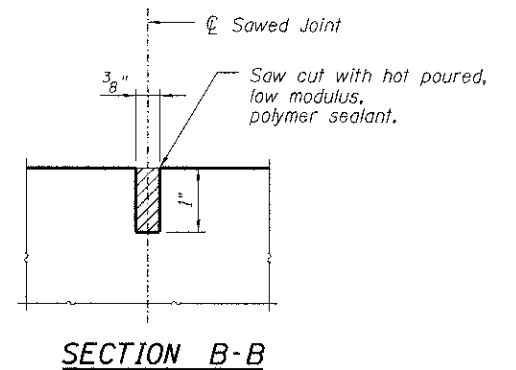


SHOULDER PLAN - UNIT B

For barrier curb details, see Sht. S-4.



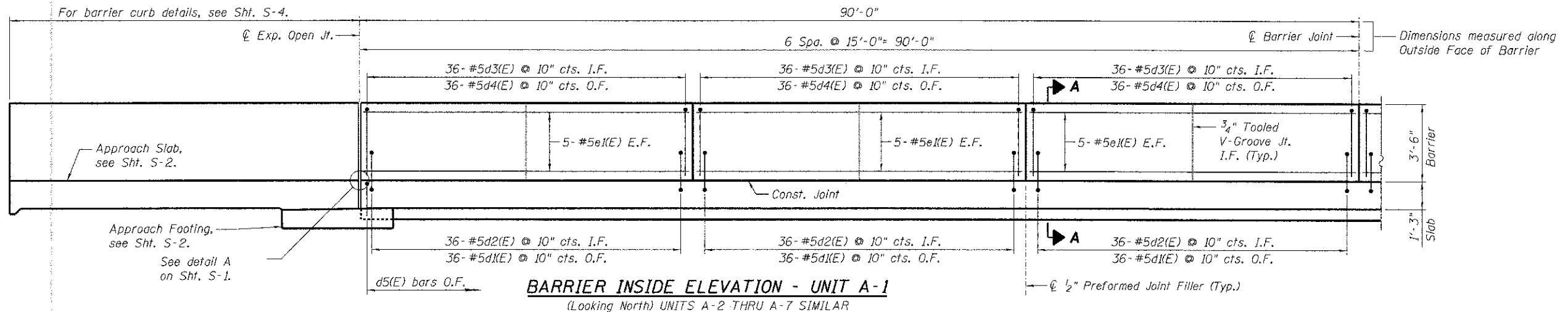
BARRIER JOINT DETAILS



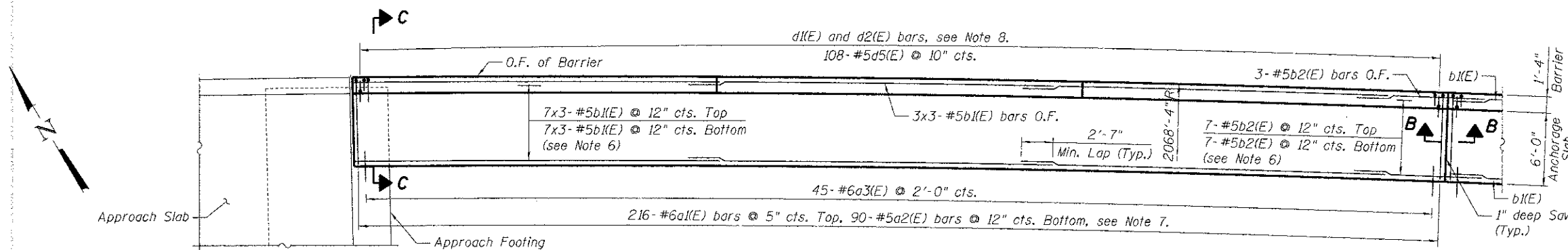
SECTION B-B

NOTES:

1. Reinforcement bars designated (E) shall be epoxy coated.
2. Bars indicated thus 4x2-#5 etc. indicates 4 lines of bars with 2 lengths per line.
3. All edges shall have a 3/4\"/>



BARRIER INSIDE ELEVATION - UNIT A-1
(Looking North) UNITS A-2 THRU A-7 SIMILAR



SHOULDER PLAN - UNIT A-1
UNITS A-2 THRU A-7 SIMILAR

FILE NAME = #FILE#	USER NAME = #USER# #SCALE# #DATE#	DESIGNED - JLR	REVISED -	STATE OF ILLINOIS DEPARTMENT OF TRANSPORTATION I-70 CONNECTION RETAINING WALL	SHOULDER PLANS & PARAPET ELEVATIONS		F.A.P. RTE.	SECTION	COUNTY	TOTAL SHEETS	SHEET NO.
		DRAWN - FD	REVISED -		998	82-1R	ST. CLAIR	294	228		
TENG & ASSOCIATES, INC. ENGINEERS/ARCHITECTS/PLANNERS CHICAGO, ILLINOIS				SCALE: NTS SHEET NO. W-2 OF W-4 STA. 140+57.64 TO STA. 147+35.00		SN 082-W234 FED. ROAD DIST. NO. ILLINOIS FED. AID PROJECT		CONTRACT NO. 76C43			