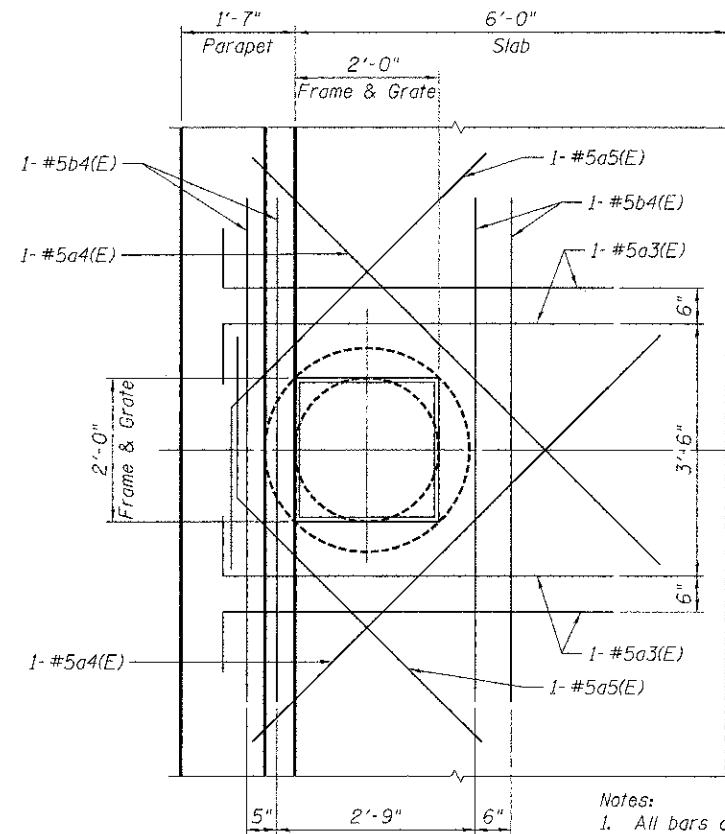
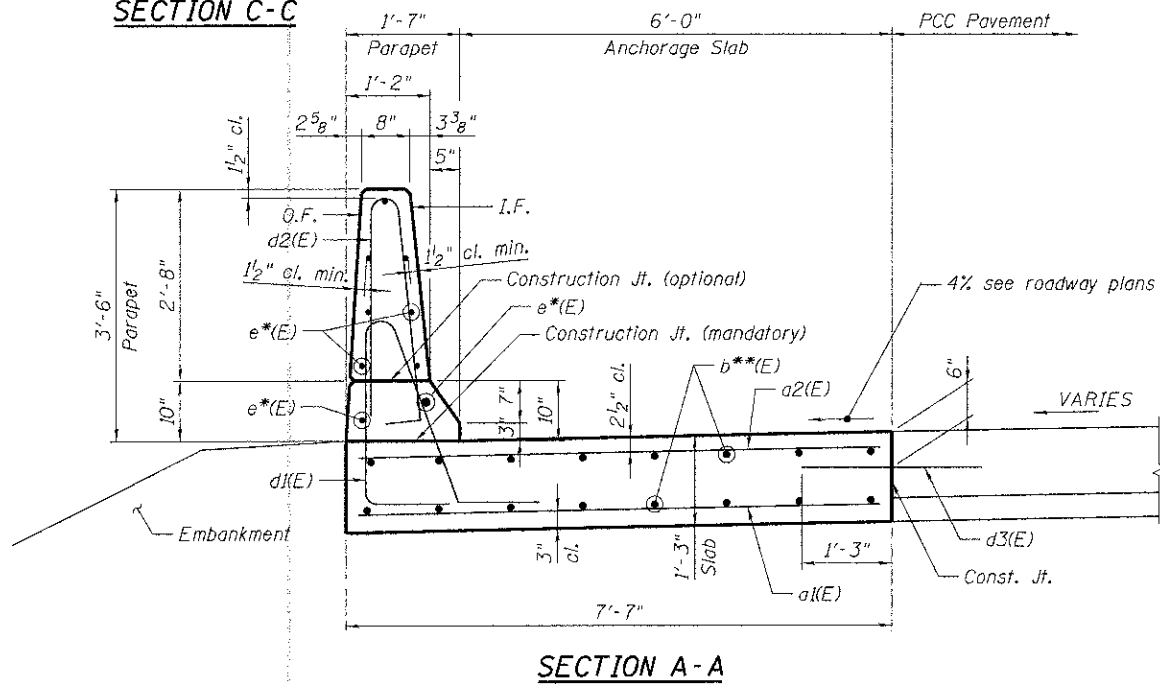
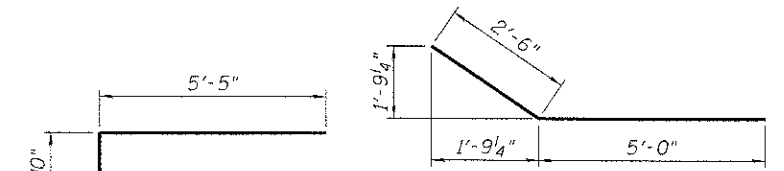


**SECTION C-C**



- Notes:
- All bars at Catch Basin or Inlet to be placed at mid-depth of slab.
  - Cut a1(E), a2(E), and b\*\*(E) bars that conflict with drainage structures.



**Bar a3(E)**

**Bar a5(E)**

**Bar d1(E)**

**Bar d2(E)**

**BAR LIST**

Anchorage Slab				
Bar	No.	Size	Length	Shape
a1(E)	202	#5	7'-3"	—
a2(E)	242	#6	7'-3"	—
a3(E)	4	#5	6'-3"	—
a4(E)	2	#5	8'-0"	—
a5(E)	2	#5	7'-6"	—
b1(E)	96	#5	30'-0"	—
b2(E)	16	#5	7'-1"	—
b3(E)	16	#5	30'-8"	—
b4(E)	4	#5	7'-0"	—
d1(E)	227	#5	7'-11"	—
d2(E)	227	#5	6'-10"	—
d3(E)	101	#6	2'-6"	—
e1(E)	7	#4	19'-8"	—
e2(E)	84	#4	14'-8"	—
e3(E)	1	#4	25'-11"	—
e4(E)	3	#8	40'-2"	—
e5(E)	6	#4	30'-0"	—
e6(E)	2	#8	47'-7"	—
e7(E)	1	#4	5'-11"	—

SUBCONTRACTOR: TENG & ASSOCIATES, INC. ENGINEERS/ARCHITECTS/PLANNERS CHICAGO, ILLINOIS  
 PROJECT: I-70 CONNECTION, ST. CLAIR COUNTY, ILLINOIS  
 SHEET: ANCHORAGE SLAB DETAILS, CONTRACT NO. 76C43