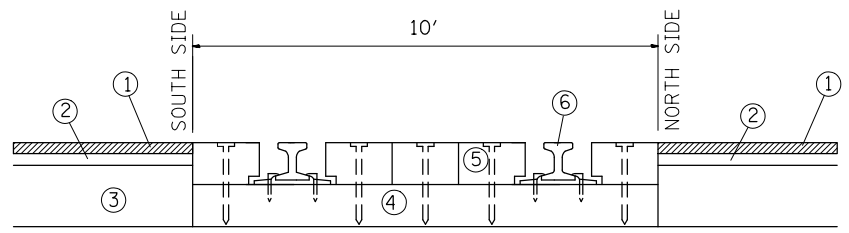
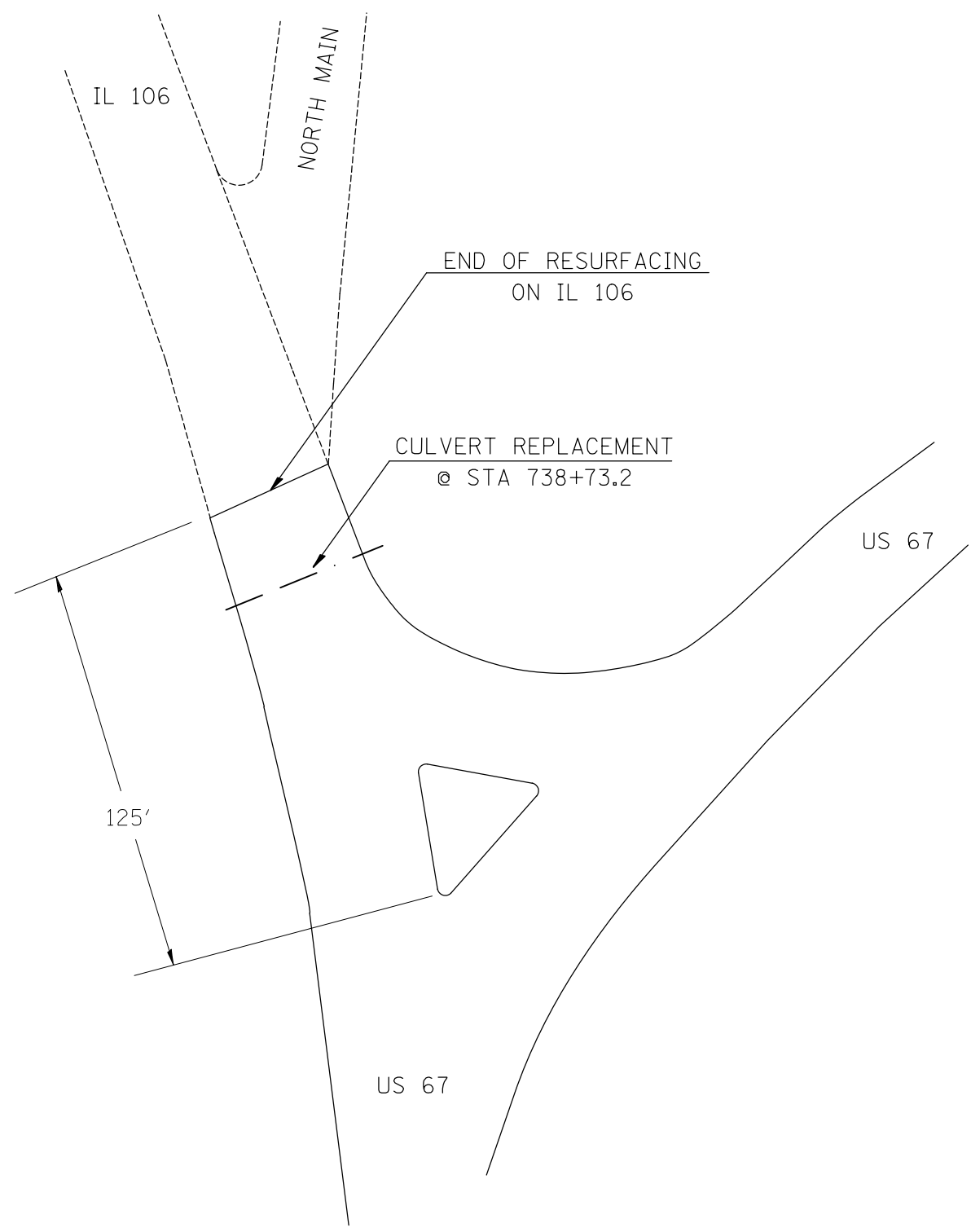


**JOINT @ BEGINNING & END OF PROJECT**



**JOINTS @ RAILROAD**

- ① PROPOSED 2 1/4 " MILLING AND BITUMINOUS RESURFACING
- ② EXISTING BITUMINOUS SURFACE
- ③ EXISTING PAVEMENT
- ④ EXISTING RR TIES
- ⑤ EXISTING RR PLANKS
- ⑥ EXISTING RAIL



NOT TO SCALE

|  |                               |            |           |   |                                     |                         |        |             |                     |                           |              |           |
|--|-------------------------------|------------|-----------|---|-------------------------------------|-------------------------|--------|-------------|---------------------|---------------------------|--------------|-----------|
| FILE NAME =  | USER NAME = conoverpj         | DESIGNED - | REVISED - | <b>STATE OF ILLINOIS<br/>DEPARTMENT OF TRANSPORTATION</b> | <b>MILLING &amp; PAVING DETAILS</b> |                         |        | F.A.S. RTE. | SECTION             | COUNTY                    | TOTAL SHEETS | SHEET NO. |
| et:\pw\work\p\dot\conoverpj\d0280278\d076f25-sht-plan2.dgn |                               | DRAWN -    | REVISED - |   | 733                                 | (62,48)RS-3,5ORS-2      | GREENE | 16          | 12                  |                           |              |           |
|  | PLOT SCALE = 100.0000' / 1in. | CHECKED -  | REVISED - |   | CONTRACT NO. 76F25                  |                         |        |             |                     |                           |              |           |
|  | PLOT DATE = 7/2/2012          | DATE -     | REVISED - |   | SCALE:                              | SHEET NO. 1 OF 2 SHEETS | STA.   | TO STA.     | FED. ROAD DIST. NO. | ILLINOIS FED. AID PROJECT |              |           |