

STATE OF ILLINOIS
DEPARTMENT OF TRANSPORTATION
DIVISION OF HIGHWAYS

**PROPOSED
HIGHWAY PLANS**

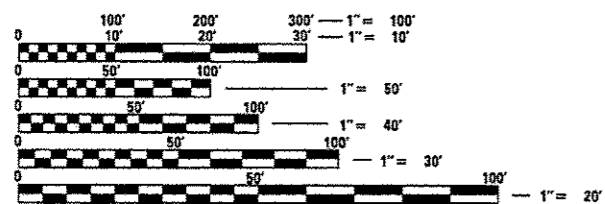
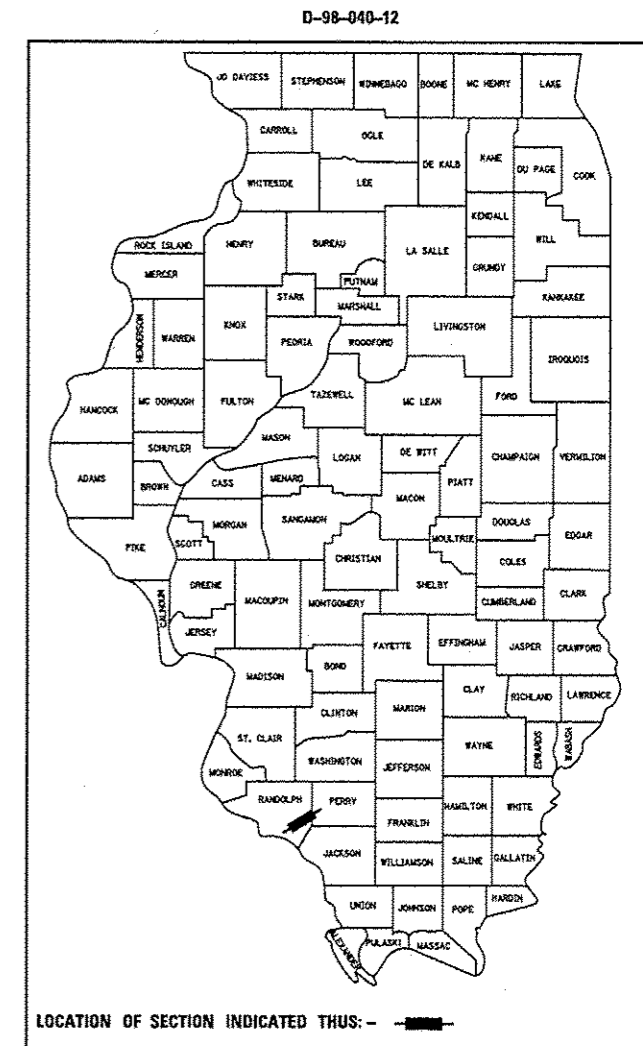
FAP ROUTE 861(IL 4 /150)
SECTION 110-BR

BRIDGE REHABILITATION
RANDOLPH COUNTY

C-98-046-12

F.A.P. RTE.	SECTION	COUNTY	TOTAL SHEETS	SHEET NO.
861	110-BR	RANDOLPH	20	1
ILLINOIS CONTRACT NO. 76F53				

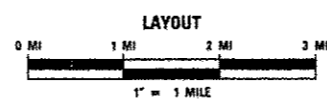
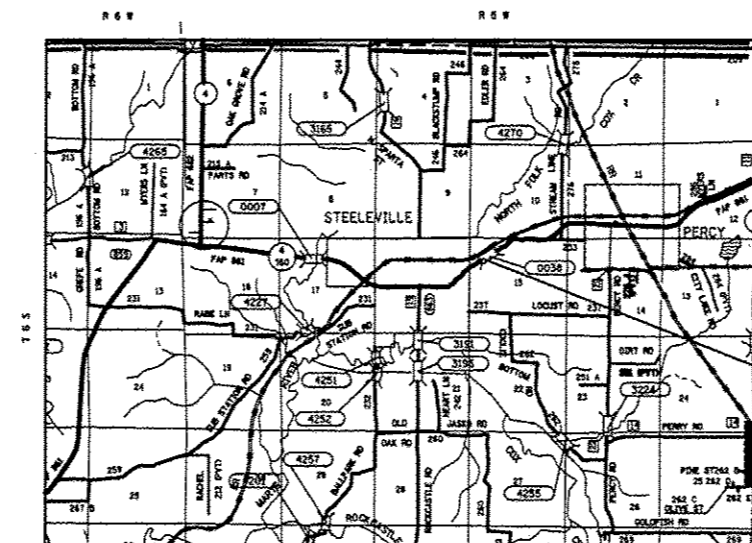
FOR INDEX OF SHEETS, SEE SHEET NO. 2



FULL SIZE PLANS HAVE BEEN PREPARED USING STANDARD ENGINEERING SCALES. REDUCED SIZED PLANS WILL NOT CONFORM TO STANDARD SCALES. IN MAKING MEASUREMENTS ON REDUCED PLANS, THE ABOVE SCALES MAY BE USED.

J.U.L.I.E.
JOINT UTILITY LOCATION INFORMATION FOR EXCAVATION
1-800-892-0123
OR 811

DESIGN DESIGNATION
NA



PROJECT LOCATION
SN 079-0038
STA. 824 + 78.5
LAT: 38.0113
LONG: -89.6461

PROJECT ENGINEER: PATTI LeBEAU (618)346-3179
PROJECT MANAGER: REBECCA THARP (618)346-3323
CONTRACT NO. 76F53

ADT
2011 = 5350 (ACTUAL)
2013 = 5500 (ESTIMATED)
2033 = 6700 (ESTIMATED)
SU = 3.6% MU = 14.0%

GROSS LENGTH = 193 FT. = 0.0366 MILE
NET LENGTH = 193 FT. = 0.0366 MILE

STATE OF ILLINOIS
DEPARTMENT OF TRANSPORTATION
DIVISION OF HIGHWAYS

SUBMITTED July 12, 2012
Chris Osmon
DEPUTY DIRECTOR OF HIGHWAYS, REGION 5 ENGINEER

August 17, 2012
John D. Baranowski P.E.
acting ENGINEER OF DESIGN AND ENVIRONMENT

August 17, 2012
William R. Freiler
acting DIRECTOR OF HIGHWAYS, CHIEF ENGINEER

**PRINTED BY THE AUTHORITY
OF THE STATE OF ILLINOIS**