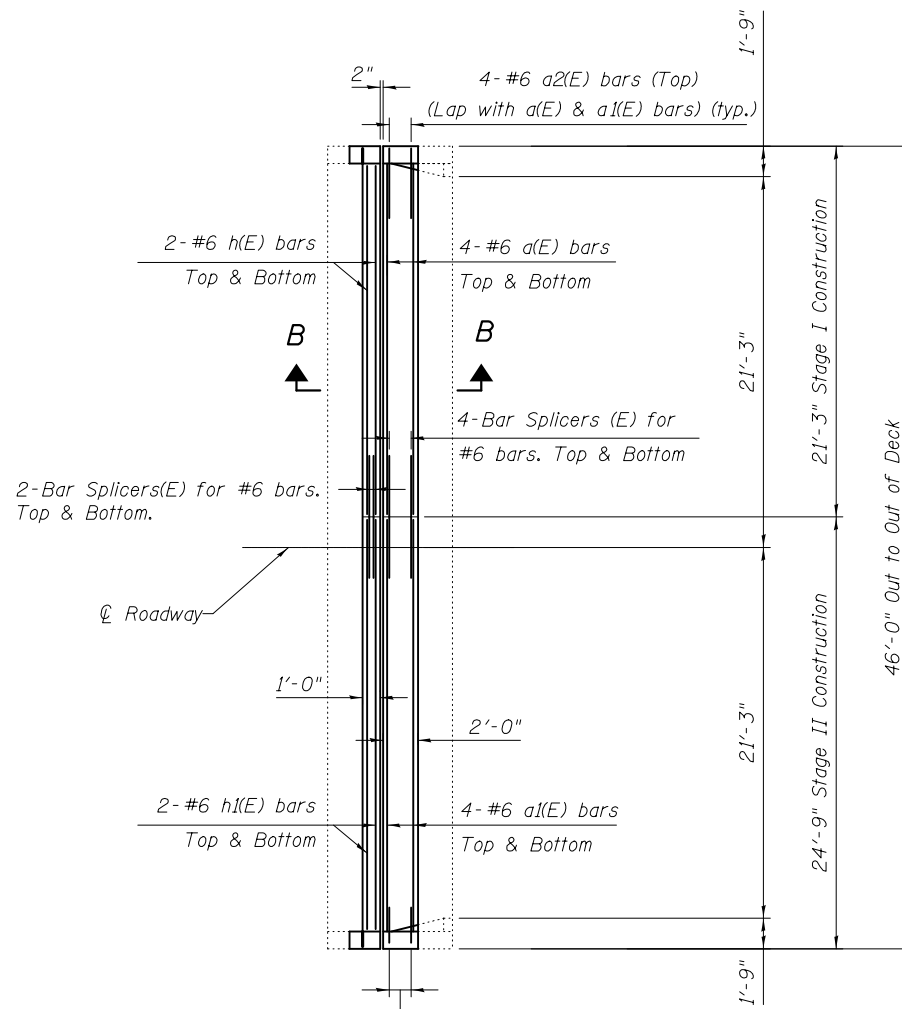


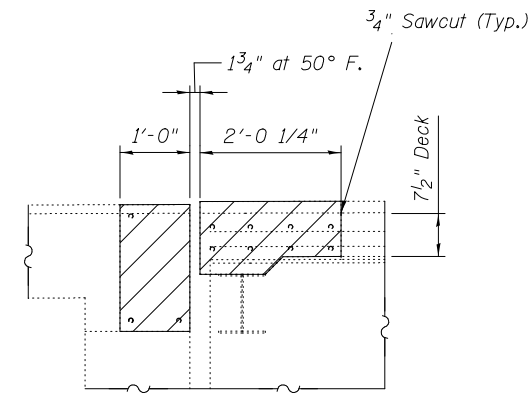
**CONCRETE REMOVAL**

(E. Abut shown, W Abut similar by 180° rotation)

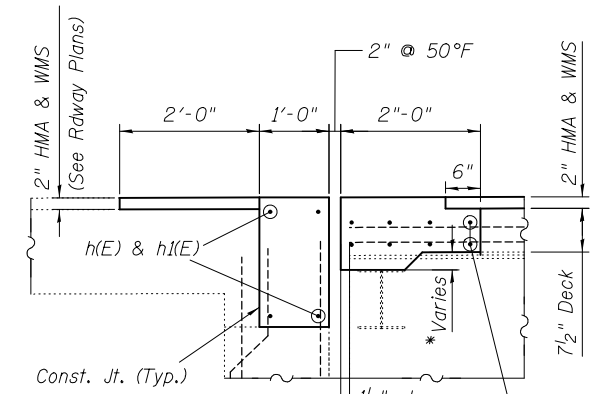


**CONCRETE REPLACEMENT**

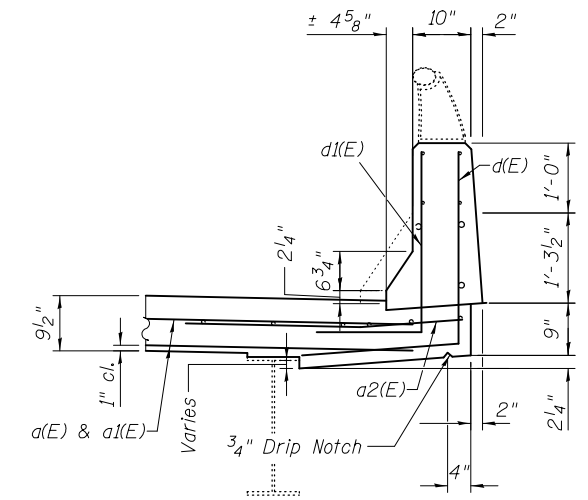
(E. Abut shown, W Abut similar by 180° rotation)



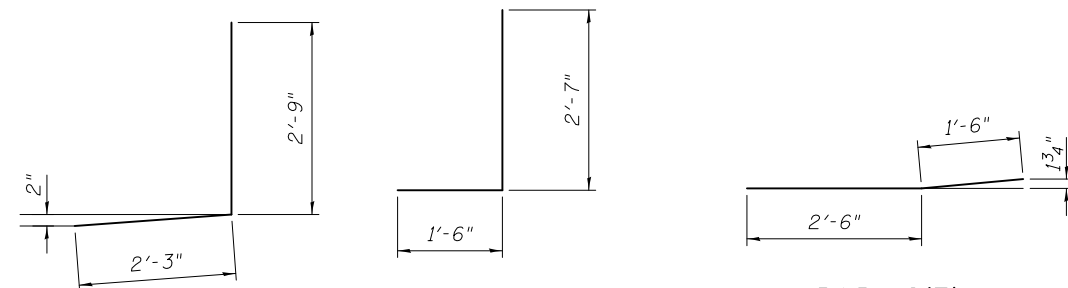
**SECTION A-A**



**SECTION B-B**



**PARAPET SECTION**



**BAR d(E)**

**BAR d(I(E))**

**BAR a2(E)**

**BILL OF MATERIAL**

Bar	No.	Size	Length	Shape
a(E)	16	#6	20'-1"	—
a(I(E))	16	#6	23'-7"	—
a2(E)	16	#6	4'-0"	—
d(E)	12	#4	5'-0"	┌
d(I(E))	12	#5	4'-1"	┌
h(E)	8	#6	19'-11"	—
h(I(E))	8	#6	23'-5"	—
Concrete Removal			Cu. Yd.	13.6
Concrete Superstructure			Cu. Yd.	13.2
Reinforcement Bars, Epoxy Coated			Lbs.	1760

Reinforcement bars designated (E) shall be epoxy coated.

DESIGNED - AYV  
CHECKED - PSK  
DRAWN - AYV  
CHECKED - PSK

EXAMINED \_\_\_\_\_ DATE - \_\_\_\_\_  
ENGINEER OF STRUCTURAL SERVICES  
PASSED \_\_\_\_\_  
ENGINEER OF BRIDGES AND STRUCTURES

STATE OF ILLINOIS  
DEPARTMENT OF TRANSPORTATION

JOINT DETAILS  
SN 079-0038

SHEET NO. 3 OF 9 SHEETS

IL RTE.	SECTION	COUNTY	TOTAL SHEETS	SHEET NO.
4/150	110-BR	RANDOLPH	20	14
CONTRACT NO.			76F53	

ILLINOIS FED. AID PROJECT