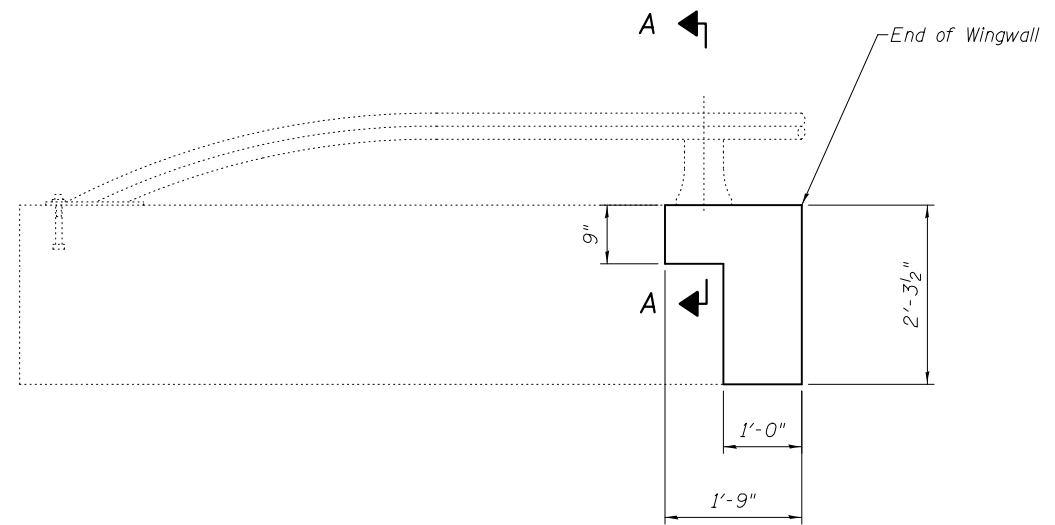
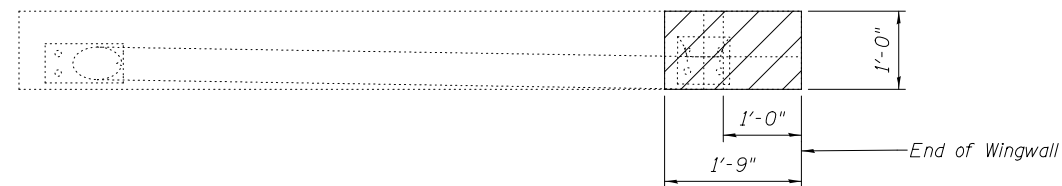


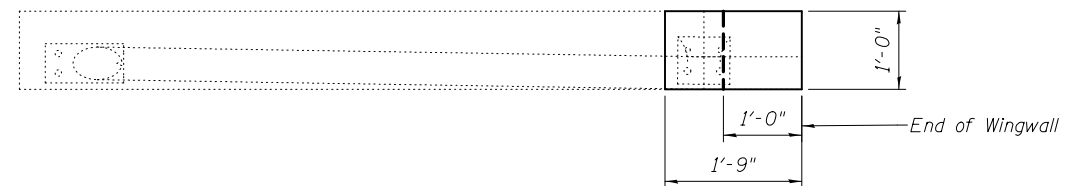
WINGWALL ELEVATION (CONCRETE REMOVAL)



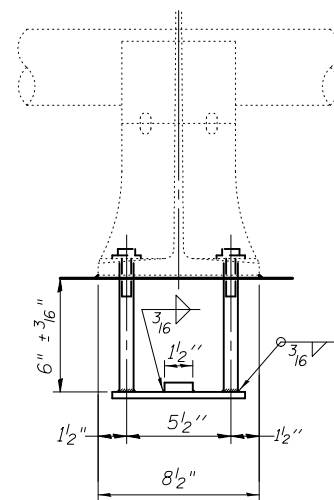
WINGWALL ELEVATION (CONCRETE SUPERSTRUCTURE)



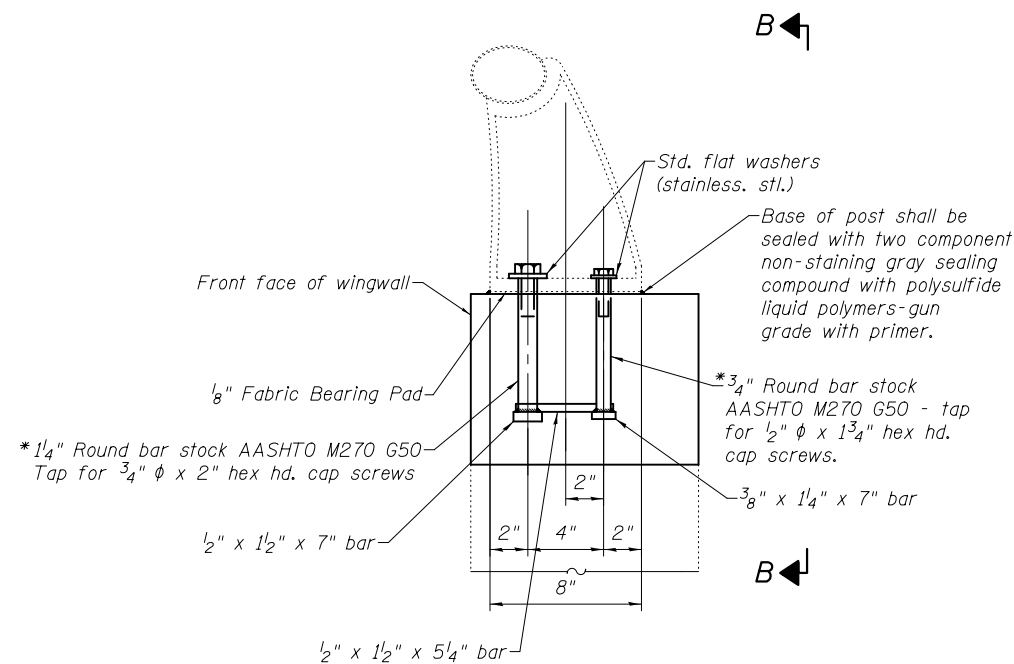
WINGWALL PLAN (CONCRETE REMOVAL)



WINGWALL PLAN (CONCRETE SUPERSTRUCTURE)



VIEW B-B



SECTION A-A

*In lieu of the cast-in-place anchor device shown, the Contractor has the option of drilling and setting stainless steel anchor rods of the same diameter and grade as the specified cap screws according to Article 509.06 of the Standard Specifications. Embedment shall be according to the manufacturer's specifications. Cost of providing anchorages is included with Concrete Superstructure.

RAIL POST DETAILS

DESIGNED - AYV	EXAMINED	DATE -
CHECKED - ---	ENGINEER OF STRUCTURAL SERVICES	
DRAWN - AYV	PASSED	
CHECKED - ---	ENGINEER OF BRIDGES AND STRUCTURES	

STATE OF ILLINOIS
DEPARTMENT OF TRANSPORTATION

WINGWALL & RAILPOST DETAILS
SN 079-0038

SHEET NO. 4 OF 9 SHEETS

IL RTE.	SECTION	COUNTY	TOTAL SHEETS	SHEET NO.
4/150	110-BR	RANDOLPH	20	15
CONTRACT NO.			76F53	

ILLINOIS FED. AID PROJECT