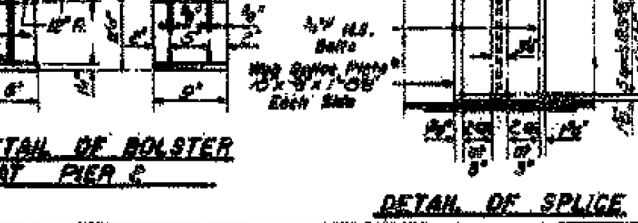
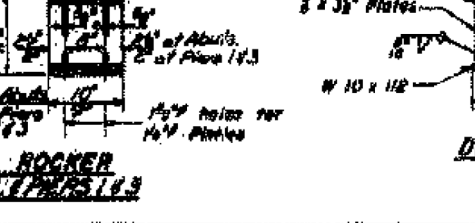
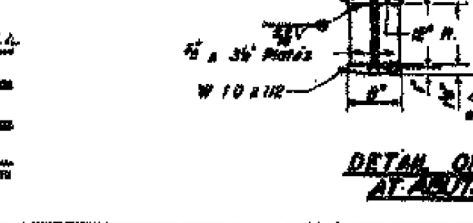
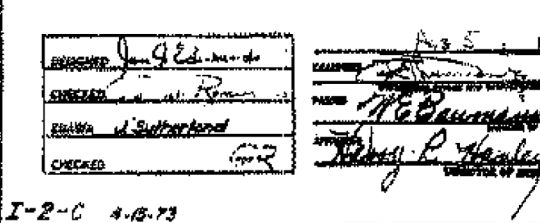
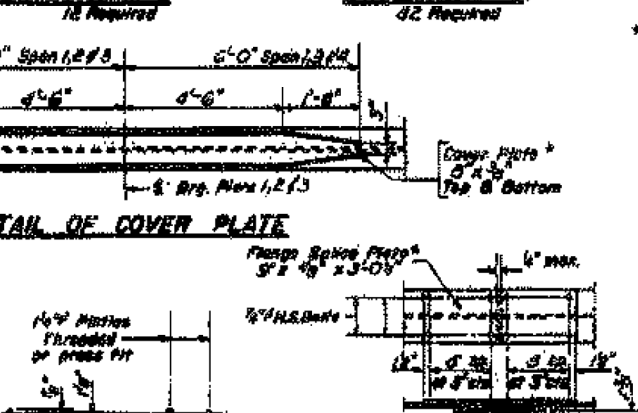
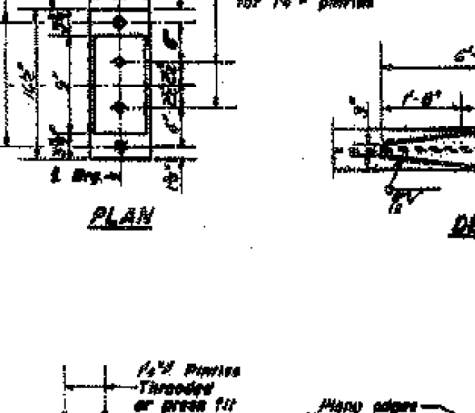
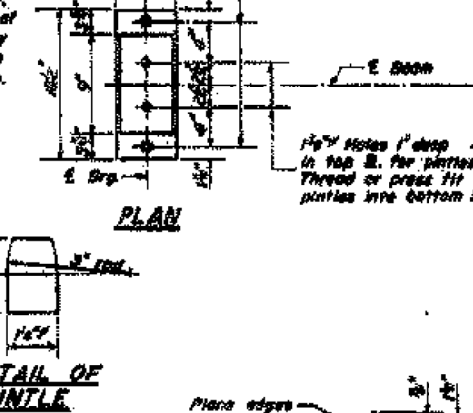
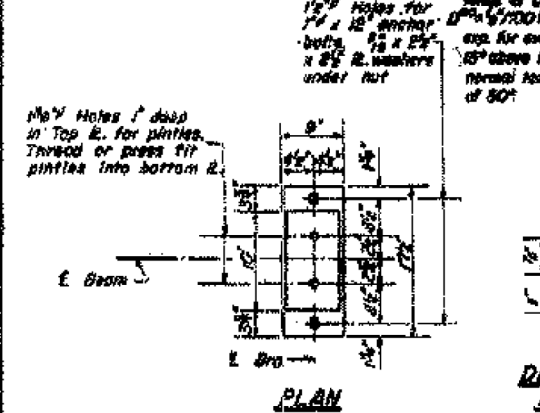
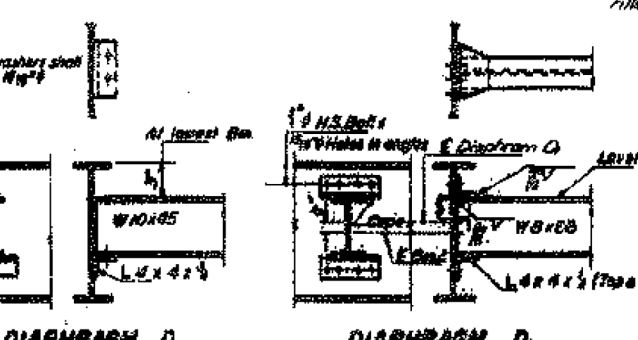
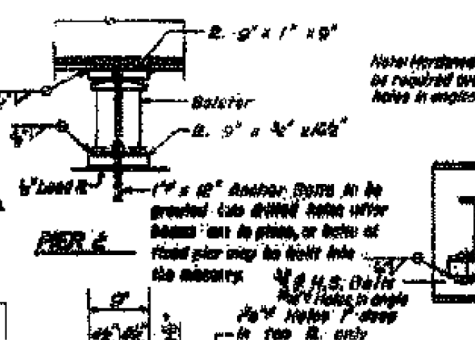
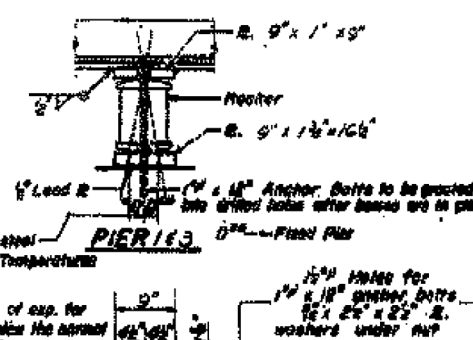
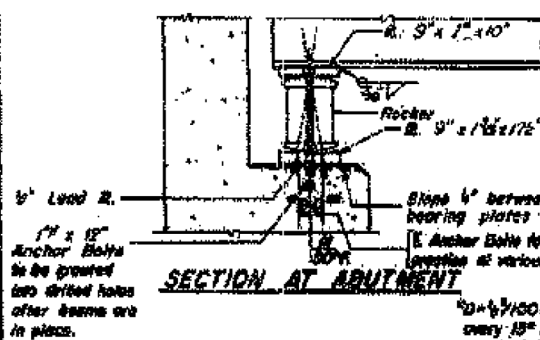
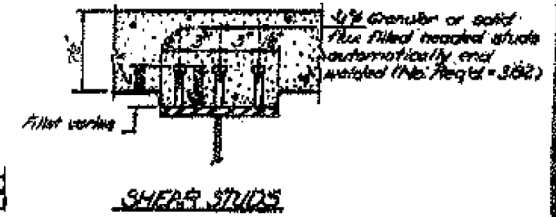
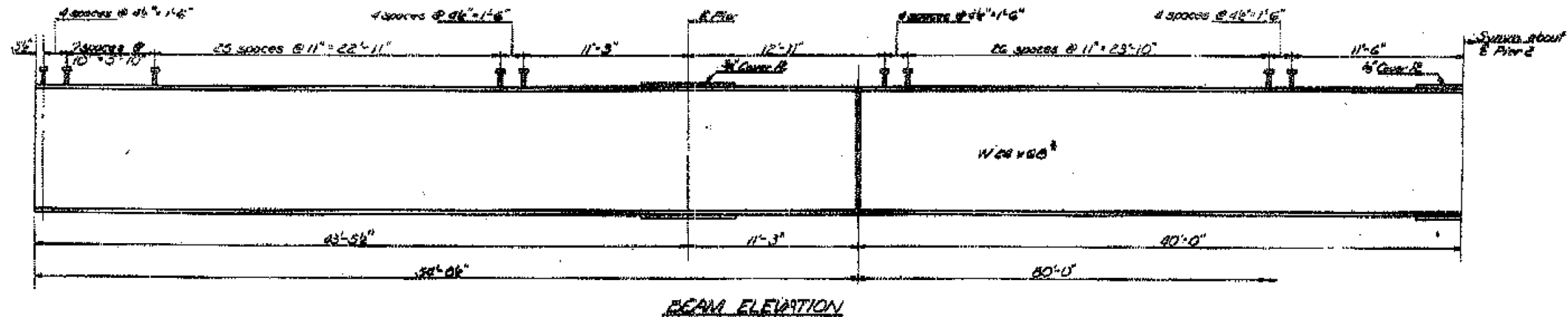


FOR INFORMATION ONLY

STATE OF ILLINOIS
DEPARTMENT OF TRANSPORTATION

CONTRACT NO.	SECTION	SHEET NO.	TOTAL SHEETS
0020-1	Randolph	20	19
PROJECT NAME: STATION 224+78.5			



DESIGNED: J. G. Edwards
CHECKED: J. M. Brown
DRAWN: J. S. Burkhard
CHECKED: G. R.

ENGINEER OF STRUCTURAL SERVICES
ENGINEER OF BRIDGES AND STRUCTURES

DATE: _____
REVISED: _____

STRUCTURAL STEEL DETAILS
EA. RT. 14, SEC. 110-00-1
RANDOLPH COUNTY
STATION 224+78.5

I-2-C 4-15-73

DESIGNED - AYV	EXAMINED	DATE	STATE OF ILLINOIS DEPARTMENT OF TRANSPORTATION	FOR INFORMATION ONLY - EXISTING STEEL DETAILS SN 079-0038	IL RTE. 4/150	SECTION 110-BR	COUNTY RANDOLPH	TOTAL SHEETS 20	SHEET NO. 19
CHECKED - PSK	PASSED	REVISED	STATE OF ILLINOIS DEPARTMENT OF TRANSPORTATION	FOR INFORMATION ONLY - EXISTING STEEL DETAILS SN 079-0038	4/150	110-BR	RANDOLPH	CONTRACT NO. 76F53	
DRAWN - AYV		REVISED			SHEET NO. 8 OF 9 SHEETS				
CHECKED - PSK					ILLINOIS FED. AID PROJECT				