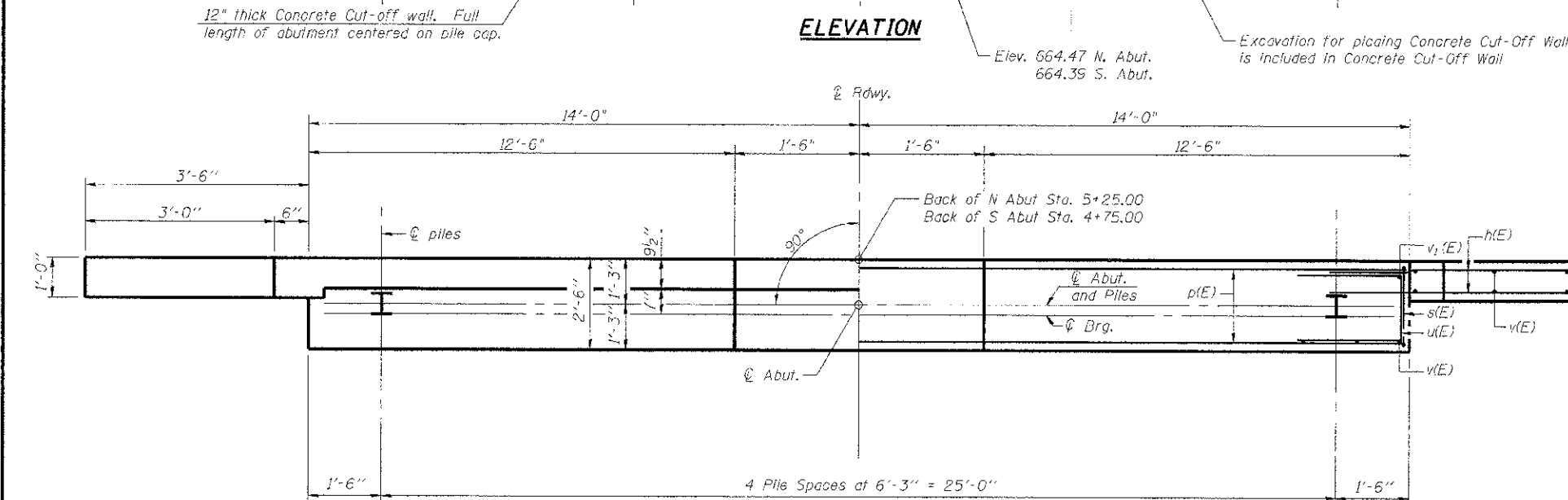
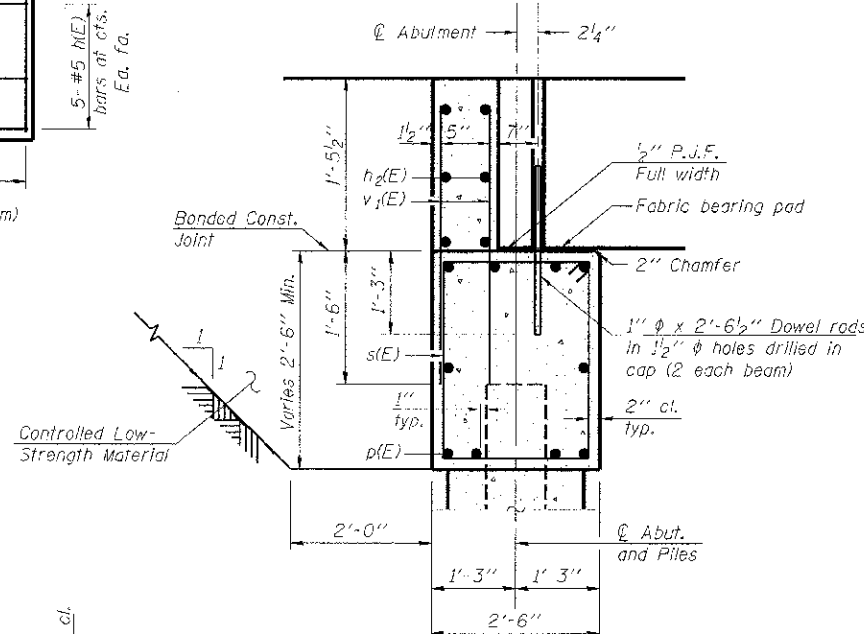


ELEVATION



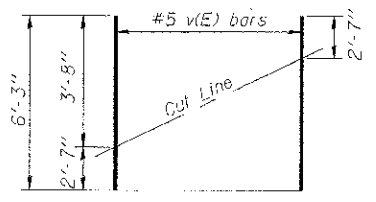
PLAN



SEC. THRU ABUT.

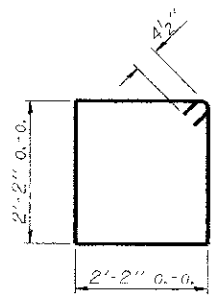
PILE DATA (2-ABUTS.)

Type	STEEL HP 10x42
Nominal Required Bearing	335 kips
Factored Resistance Available	184 kips
Estimated Pile Length	37 Feet North Abut. and 38 Feet South Abut.
Number of Production Piles	8
Number of Test Piles	2

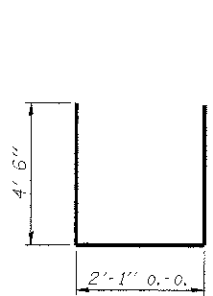


FIELD CUTTING DIAGRAM

Order v(E) bars full length. Cut as shown and use remainder of bars in opposite face.



BAR s(E)



BAR u(E)

Notes

The Backwall and the portion of the Wingwalls above the bonded construction joint shall be cast against the in-place beam.
Space reinforcement in cap to miss anchor bolts.

BILL OF MATERIAL
TWO ABUTMENTS

Bar	No.	Size	Length	Shape
h(F)	64	#5	6'-6"	—
h1(E)	12	#5	27'-8"	—
p(E)	20	#7	27'-8"	—
s(E)	92	#5	9'-5"	□
u(E)	16	#6	11'-1"	—
v(E)	16	#5	6'-3"	—
v1(E)	116	#5	2'-10"	—
Structure Excavation	Cu. Yd.		64.8	
Concrete Structures	Cu. Yd.		17.7	
Reinforcement Bars, Epoxy Coated	Pound		3530	
Furnishing Steel Piles HP 10x42	Foot		300	
Driving Piles	Foot		300	
Concrete Cut-off Wall	Cu. Yd.		6.2	
Controlled Low-Strength Material	Cu. Yd.		36.3	
Test Piles Steel HP 10x42	Each		2	
Pile Shoes	Each		10	

PRINTED DATE: 6/11/2012
 FILE NAME: m:\projects\909118\structure\sheet\18.dwg
 USER: jeh
 PLOT SCALE: 0.8833 / 1" = 10'-0"
 PLOT DATE: 6/11/2012



USER NAME: #USER#	DESIGNED: DF	REVISED:
PLCT SCALE: 0.8833 / 1"	CHECKED: JEH, ADG	REVISED:
PLCT DATE: 6/11/2012	DRAWN: JEH, ADG	REVISED:
	CHECKED: DF	REVISED:

STATE OF ILLINOIS
DEPARTMENT OF TRANSPORTATION

ABUTMENT DETAILS
STRUCTURE NO 092-3508

SHEET NO 5 OF 7 SHEETS

TWP. RTE.	SECTION	COUNTY	TOTAL SHEETS	SHEET NO.
92	05-09118-00-BR	VERMILION	15	10
				CONTRACT NO. 91463
ILLINOIS FED. AID PROJECT				