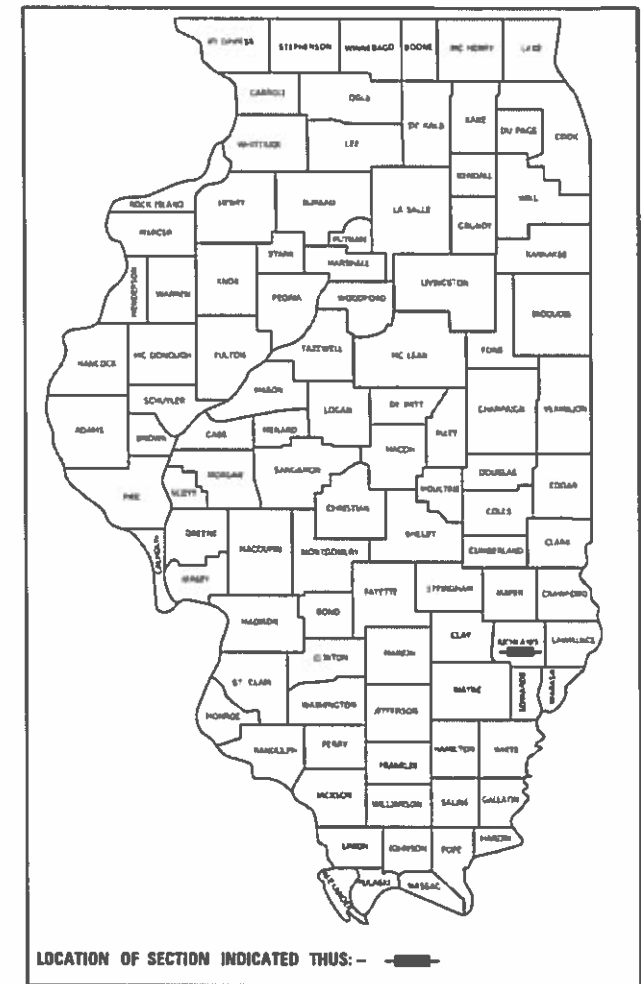


STATE OF ILLINOIS
DEPARTMENT OF TRANSPORTATION

F.A.S. RTE	SECTION	COUNTY	TOTAL SHEETS	SHEET NO.
1702	-	RICHLAND	15	1
		ILLINOIS	CONTRACT NO. 74872	

D7 HMA SAFETY SHLD 2019-1

D-97-059-18



FOR INDEX OF SHEETS, SEE SHEET NO. 02

AADT = 1550 (2017)

PROPOSED HIGHWAY PLANS

F.A.S. ROUTE 1720 (IL 250)
SECTION D7 HMA SAFETY SHLD 2019-1
PROJECT HSIP-HRRR-DBR2 (180)
SAFETY SHOULDERS
RICHLAND COUNTY

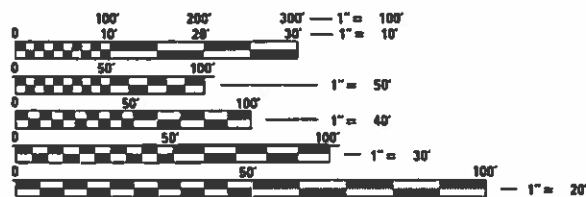
C-97-106-18

STATION EQUATIONS:

- 20+75.79 BK = 28+20.00 AH
- 43+67.32 BK = 43+71.63 AH
- 86+50.00 BK = 87+11.06 AH
- 109+73.68 BK = 109+98.79 AH
- 144+28.00 BK = 144+24.09 AH
- 164+22.49 BK = 164+29.64 AH
- 204+25.96 BK = 204+29.47 AH
- 229+42.95 BK = 229+29.23 AH
- 275+84.84 BK = 275+94.99 AH
- 297+84.13 BK = 298+14.36 AH
- 403+90.63 BK = 404+22.51 AH
- 409+43.60 BK = 409+78.67 AH
- 431+63.14 BK = 431+61.70 AH

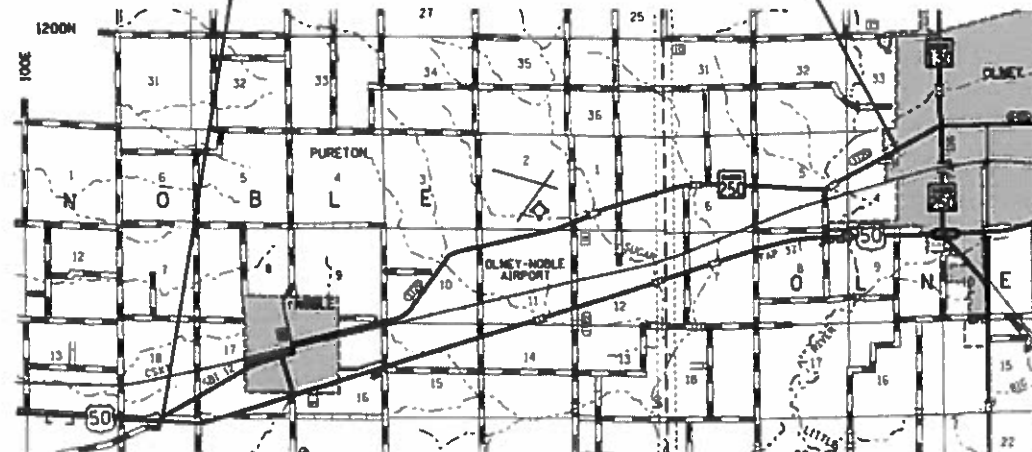
PROJECT ENDS
STATION 489+68.45
RICHLAND COUNTY

PROJECT BEGINS
LINN STREET
STATION 22+15.31
RICHLAND COUNTY



FULL SIZE PLANS HAVE BEEN PREPARED USING STANDARD ENGINEERING SCALES. REDUCED SIZED PLANS WILL NOT CONFORM TO STANDARD SCALES. IN MAKING MEASUREMENTS ON REDUCED PLANS, THE ABOVE SCALES MAY BE USED.

J.U.L.I.E.
JOINT UTILITY LOCATION INFORMATION FOR EXCAVATION
1-800-892-0123
OR 811



GROSS LENGTH = 46,473.59 FT. = 8.82 MILE
NET LENGTH = 46,272.59 FT. = 8.76 MILE

PROJECT ENGINEER BRIAN LEWIS
PROJECT MANAGER MYRA OLTMAN

CONTRACT NO. 74872

STATE OF ILLINOIS
DEPARTMENT OF TRANSPORTATION

SUBMITTED July 02 20 18
Jeffrey M. South
REGIONAL ENGINEER

Aug 17 20 18
Scott A. Etk
ENGINEER OF DESIGN AND ENVIRONMENT

Aug 11 20 18
Paul P. Chaf
DIRECTOR OF HIGHWAYS PROJECT IMPLEMENTATION

PRINTED BY THE AUTHORITY
OF THE STATE OF ILLINOIS

GENERAL NOTES

THIS SECTION SHALL BE CONSTRUCTED IN ACCORDANCE WITH THE PLANS, THE "STANDARD SPECIFICATIONS FOR ROAD AND BRIDGE CONSTRUCTION", ADOPTED APRIL 1, 2016; THE "SUPPLEMENTAL SPECIFICATIONS AND RECURRING SPECIAL PROVISIONS" INDICATED ON THE CHECK SHEET, AND THE SPECIAL PROVISIONS INCLUDED IN THE PROPOSAL.

THE WORK IN THIS SECTION CONSISTS OF PLACING HMA SAFETY SHOULDERS, AGGREGATE WEDGE SHOULDERS, RUMBLE STRIPS, PAINT PAVEMENT MARKING AND ANY OTHER WORK NEEDED TO COMPLETE THIS SECTION.

THE CONTRACTOR SHALL PROVIDE INTERNET ACCESS TO THE HOT-MIX ASPHALT PLANT QUALITY CONTROL LAB SO THAT HOT-MIX ASPHALT PLANT REPORTS CAN BE E-MAILED TO THE DISTRICT HEADQUARTERS. THIS WORK SHALL BE INCLUDED IN THE COST OF HOT-MIX ASPHALT ITEMS.

THE ENGINEER WILL CHECK THE DEPTH AT EACH BOX CULVERT TO ENSURE 8" CLEARANCE. THE ENGINEER WILL DETERMINE THE DEPTH TO MILL OR TO OMIT THE AREA COMPLETELY OF HMA SHOULDER.

OMIT RUMBLE STRIPS ON ALL SIDEROADS, PRIVATE AND COMMERCIAL ENTRANCES AT RADIUS RETURNS.

OMIT HOT-MIX ASPHALT SHOULDERS, 8" ON ALL HMA AND PCC SIDEROADS, AND HMA AND PCC ENTRANCES. FIELD ENTRANCES WITH HMA APRONS WILL NOT BE OMITTED FROM HOT-MIX ASPHALT SHOULDERS, 8".

HOT-MIX ASPHALT SHOULDERS PLACED AT GUARDRAIL LOCATIONS MAY REQUIRE HAND PLACEMENT AND COMPACTION METHODS.

MATERIAL FOR AGGREGATE WEDGE SHOULDER, TYPE B SHALL BE CRUSHED STONE, CRUSHED CONCRETE OR RAP.

THE ENGINEER WILL DETERMINE FINAL LOCATIONS AND WIDTH OF THE HOT-MIX ASPHALT SHOULDERS.

THE QUANTITIES FOR PAINT PAVEMENT MARKING - LINE 4" ARE AS FOLLOWS: 11,525' OF YELLOW AND 90,040' OF WHITE PAINT PAVEMENT MARKING 4" INCLUDES QUANTITY FOR THE PLACEMENT THROUGH THE OMISSION IN NOBLE.

THE FOLLOWING MIXTURE REQUIREMENTS ARE APPLICABLE TO THIS PROJECT:

APPLICATION	AC/PG	DESIGN AIR VOIDS	MIXTURE COMPOSITION	FRICTION AGGREGATE	QUALITY MANAGEMENT
HMA SHOULDERS, 8" (TOP 2" LIFT)	PG 64-22	4.0% @ N=70	IL - 9.5	MIXTURE C	QC/OA
HMA SHOULDERS, 8" (BOTTOM 6" LIFT)	PG 64-22	4.0% @ N=70	IL - 19.0	N/A	QC/OA

INDEX OF SHEETS

SHEET NO	TITLE
1	COVER SHEET
2	GENERAL NOTES, INDEX OF SHEETS
3	SUMMARY OF QUANTITIES
4	TYPICAL SECTION
5-6	SCHEDULE OF QUANTITIES
7-11	PLAN SHEETS
12-15	PAVEMENT MARKING DETAILS

THE FOLLOWING STANDARDS ARE A PART OF THESE PLANS AND ARE INCLUDED FOLLOWING THE LAST NUMBERED SHEET OF THE PLANS.

000001-06	STANDARD SYMBOLS, ABBREVIATIONS AND PATTERNS
001006	DECIMAL OF AN INCH AND OF A FOOT
642006	SHOULDER RUMBLE STRIP 8 IN
701001-02	OFF-ROAD OPERATIONS, 2L, 2W, MORE THAN 15' AWAY
701006-05	OFF-ROAD OPERATIONS, 2L, 2W, 15' TO 24" FROM PAVEMENT EDGE
701011-04	OFF-ROAD MOVING OPERATIONS, 2L, 2W, DAY ONLY
701306-04	SLOW MOVING OPERATIONS DAY ONLY, FOR SPEEDS ≥ MPH
701301-04	LANE CLOSURE, 2L, 2W, SHORT TIME OPERATIONS - DAY ONLY
701311-03	LANE CLOSURE, 2L, 2W, MOVING OPERATIONS - DAY ONLY
701326-04	LANE CLOSURE, 2L, 2W, PAVEMENT WIDENING, FOR SPEEDS ≥ 45 MPH
701901-07	TRAFFIC CONTROL DEVICES

MODEL: Default
FILE: \\nas01c.pva\illinois\B&E\BID\NTEC\Illinois\gov\PI\DOT\Documents\1\DOT Office\1\1872\CaddData\CAD\akces10774872-sh-genot6.dgn

USER NAME = steffenmk	DESIGNED - M OLTMAN	REVISED -
	DRAWN - M OLTMAN	REVISED -
PLOT SCALE = 100.0000' / in.	CHECKED -	REVISED -
PLOT DATE = 7/2/2018	DATE -	REVISED -

**STATE OF ILLINOIS
DEPARTMENT OF TRANSPORTATION**

**INDEX OF SHEETS &
GENERAL NOTES**

SCALE: SHEET OF SHEETS STA. TO STA.

F.A.S RTE.	SECTION	COUNTY	TOTAL SHEETS	SHEET NO.
*	*	RICHLAND	15	2
* D7 HMA SAFETY SHLD 2019-1		CONTRACT NO. 74872		
ILLINOIS FED. AID PROJECT				

90% FED
10% STATE

SUMMARY OF QUANTITIES			TOTAL QUANTITIES	CONSTRUCTION TYPE CODE		
CODE NO	ITEM	UNIT		0021 RURAL	0021 URBAN	
20200600	EXCAVATING AND GRADING EXISTING SHOULDER	UNIT	946	890	56	
44004250	PAVED SHOULDER REMOVAL	SO YD	18	18		
48102100	AGGREGATE WEDGE SHOULDER, TYPE B	TON	7070	6600	470	
48203029	HOT-MIX ASPHALT SHOULDERS, 8"	SO YD	28165	26338	1827	
64200108	SHOULDER RUMBLE STRIPS, 8 INCH	FOOT	84542	78921	5621	
67100100	MOBILIZATION	L SUM	1	0.93	0.07	
70100460	TRAFFIC CONTROL AND PROTECTION, STANDARD	L SUM	1	0.93	0.07	
	701306					
70100500	TRAFFIC CONTROL AND PROTECTION, STANDARD	L SUM	1	0.93	0.07	
	701326					
70103815	TRAFFIC CONTROL SURVEILLANCE	CAL DA	10	9.7	0.3	
* 78001110	PAINT PAVEMENT MARKING - LINE 4"	FOOT	101565	94434	7131	
X7015005	CHANGEABLE MESSAGE SIGN	CAL DA	28	27	1	

SUMMARY OF QUANTITIES			TOTAL QUANTITIES	CONSTRUCTION TYPE CODE		
CODE NO	ITEM	UNIT				

* SPECIALTY ITEM

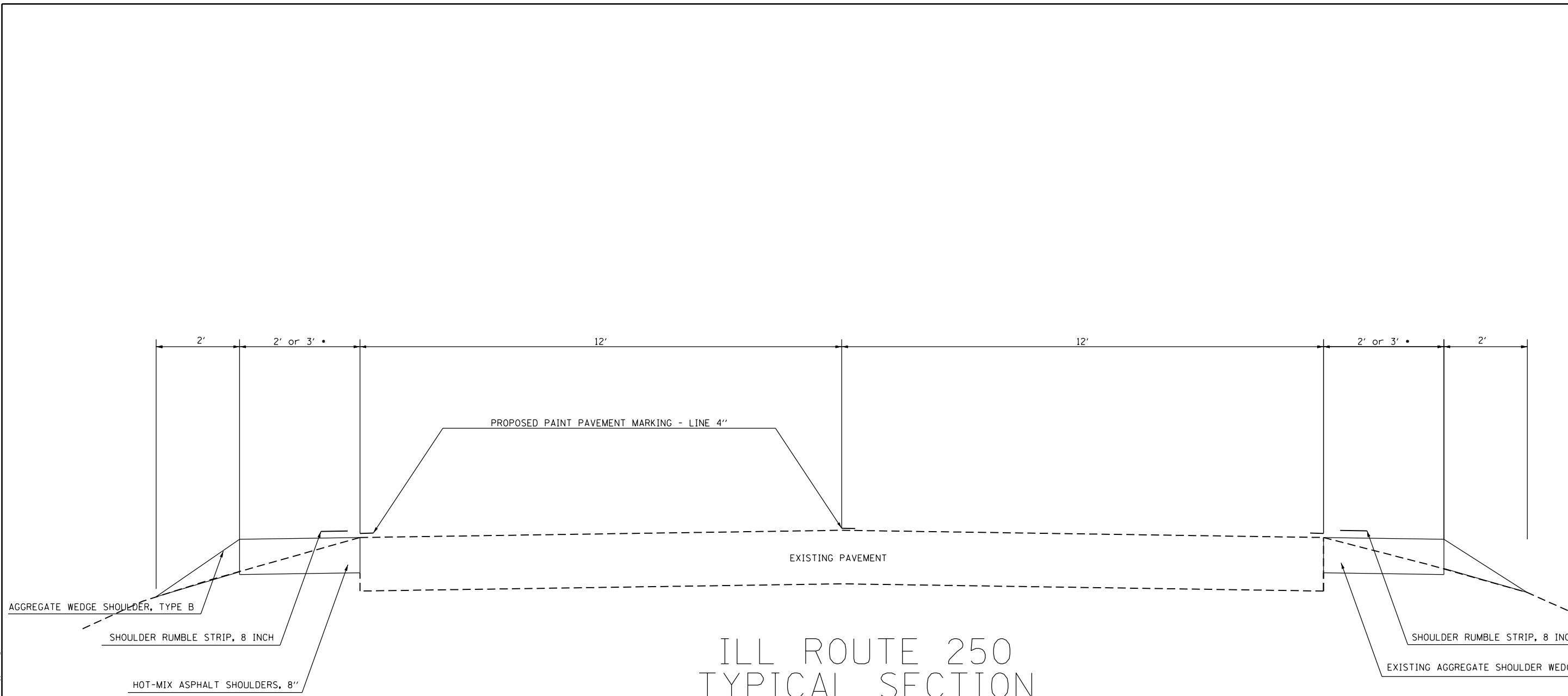
MODIFIED BY: J. B. B...
 FILE NAME: D:\ILLINOIS\PROJECTS\2019\74872\SUMMARY\74872_S000.dwg

USER NAME - Qltmanmm	DESIGNED -	REVISED - 7/9/2018
PLOT SCALE - 100 0000' / in	DRAWN -	REVISIONS -
PLOT DATE - 7/9/2018	CHECKED -	REVISIONS -
	DATE -	REVISIONS -

**STATE OF ILLINOIS
DEPARTMENT OF TRANSPORTATION**

SUMMARY OF QUANTITIES				
SCALE	SHEET	OF	SHEETS	STA. TO STA.

F A S RTE	SECTION	COUNTY	TOTAL SHEETS	SHEET NO.
1720		RICHLAND	15	3
D7 HMA SAFETY SHLD 2019			CONTRACT NO. 74872	
ILLINOIS FED AID PROJECT				



ILL ROUTE 250 TYPICAL SECTION

- HOT-MIX ASPHALT SHOULDER WIDTH AS NOTED IN THE SCHEDULE OR AS DIRECTED BY THE ENGINEER

MODEL: Default
 FILE NAME: P:\ILL08\BIDD\NTEC\Illinois.gov\PIWDOT\Documents\DOT_Offices\Director\Projects\174872\CADD\Drawings\174872-shld-typ-sec.dgn

USER NAME = steffemk	DESIGNED - M OLTMAN	REVISED -
	DRAWN - M OLTMAN	REVISED -
PLOT SCALE = 100.0000 ' / in.	CHECKED -	REVISED -
PLOT DATE = 7/2/2018	DATE -	REVISED -

**STATE OF ILLINOIS
DEPARTMENT OF TRANSPORTATION**

PROPOSED TYPICAL SECTION			
SCALE:	SHEET	OF	SHEETS
	STA.		TO STA.

F.A.S. RTE.	SECTION	COUNTY	TOTAL SHEETS	SHEET NO.
1720	*	RICHLAND	15	4
*D7 HMA SAFETY SHLD 2019-1			CONTRACT NO. 74872	
ILLINOIS FED. AID PROJECT				

HOT-MIX ASPHALT SHOULDER SCHEDULE									
STATION	TO	STATION	LANE	LENGTH	WIDTH	EXCAVATING AND GRADING EXISTING SHOULDER UNIT	HOT-MIX ASPHALT SHOULDERS, 8" SQ YD	SHOULDER RUMBLE STRIPS, 8 IN FOOT	AGGREGATE WEDGE SHOULDER, TYPE B TONS
34+38.00		37+07.85	LT	269.85	3	2.7	90.0	269.9	22.5
37+07.85		37+59.29	LT	51.44	3	WEST NORTH STREET (HMA) 39+50			
37+59.29		43+67.32	LT	608.03	3	6.1	202.7	608.0	50.8
43+67.32	=	43+71.63	LT	4.31	3	STATION EQUATION			
43+71.63		66+98.99	LT	2327.36	3	23.3	775.8	2327.4	194.4
66+98.99		69+71.01	LT	272.02	3	BRIDGE OMISSION			
69+21.01		73+07.00	LT	385.99	3	3.9	128.7	386.0	32.2
73+07.00		73+96.00	LT	89	3	ELMDALE ROAD 975 E (HMA) 73+45			
73+96.00		85+40.00	LT	1144	3	11.4	381.3	1144.0	95.5
85+40.00		86+30.00	LT	90	3	CONCRETE CE 85+46 ALLAN'S WELD			
86+30.00		86+50.00	LT	20	3	0.2	6.7	20.0	1.7
86+50.00	=	87+11.06	LT	61.06	3	STATION EQUATION			
87+11.06		109+73.68	LT	2262.62	3	22.6	754.2	2262.6	189.0
109+73.68	=	109+98.79	LT	25.11	3	STATION EQUATION			
109+98.79		114+46.00	LT	447.21	3	4.5	149.1	447.2	37.4
114+46.00		114+81.00	LT	35	3	SHIPLEY ROAD 900E (HMA) 114+58			
114+81.00		119+30.00	LT	449	3	4.5	149.7	449.0	37.5
119+30.00		121+75.00	LT	245	2	2.5	54.4	245.0	20.5
121+75.00		144+28.00	LT	2253	3	22.5	751.0	2253.0	188.2
144+28.00	=	144+24.09	LT		3	STATION EQUATION			
144+24.09		153+54.00	LT	929.91	3	9.3	310.0	929.9	77.7
153+54.00		153+88.00	LT	34	3	HERITAGE ROAD 825E (HMA) 153+70			
153+88.00		157+09.00	LT	321	3	3.2	107.0	321.0	26.8
157+09.00		157+39.00	LT	30	3	HMA PE 157+24			
157+39.00		157+93.00	LT	54	3	0.5	18.0	54.0	4.5
157+93.00		158+23.00	LT	30	3	HMA PE 158+05			
158+23.00		164+22.49	LT	599.49	3	6.0	199.8	599.5	50.1
164+22.49		164+29.64	LT	7.15	3	STATION EQUATION			
164+29.64		204+25.96	LT	3996.32	3	40.0	1332.1	3996.3	333.8
204+25.96	=	204+29.47	LT		3	STATION EQUATION			
204+29.47		208+72.00	LT	442.53	3	4.4	147.5	442.5	37.0
208+72.00		210+01.00	LT	129	3	BRIDGE OMISSION			
210+01.00		215+00.00	LT	499	3	5.0	166.3	499.0	41.7
215+00.00		217+85.00	LT	285	3	OMISSION (GUARDRAIL)			
217+85.00		221+39.00	LT	354	3	3.5	118.0	354.0	29.6
221+39.00		222+68.00	LT	129	3	HIGGIN SWITCHROAD 700 E (HMA)			
222+68.00		229+42.95	LT	674.95	3	6.7	225.0	675.0	56.4
229+42.95		229+29.23	LT		3	STATION EQUATION			

HOT-MIX ASPHALT SHOULDER SCHEDULE										
STATION	TO	STATION	LANE	LENGTH	WIDTH	EXCAVATING AND GRADING EXISTING SHOULDER UNIT	HOT-MIX ASPHALT SHOULDERS, 8" SQ YD	SHOULDER RUMBLE STRIPS, 8 IN FOOT	AGGREGATE WEDGE SHOULDER, TYPE B TONS	
229+29.23		257+14.00	LT	2784.77	3	27.8	928.3	2784.8	232.6	
257+14.00		257+34.00	LT	20	3	HMA PE 257+24				
257+34.00		275+84.84	LT	1850.84	3	18.5	616.9	1850.8	154.6	
275+84.84	=	275+94.99	LT		3	STATION EQUATION				
275+94.99		275+97.00	LT	2.01	3	0.0	0.7	2.0	0.2	
275+97.00		276+40.00	LT	43	3	RIDGE ROAD 600 E 276+10 (HMA)				
276+40.00		297+84.13	LT	2144.13	3	21.4	714.7	2144.1	179.1	
297+84.13	=	298+14.36	LT		3	STATION EQUATION				
298+14.36		309+60.00	LT	1145.64	3	11.5	381.9	1145.6	95.7	
309+60.00		310+00.00	LT	40	3	DAYTON LANE 950 N 309+80 (HMA)				
310+00.00		333+27.00	LT	2327	3	23.3	775.7	2327.0	194.3	
333+27.00		333+87.00	LT	60	3	PE 333+57 (HMA)				
333+87.00		339+40.00	LT	553	2	5.5	122.9	553.0	46.2	
339+40.00		341+45.95	LT	205.95	3	2.1	68.6	205.9	17.2	
341+45.95	=	341+80.50	LT	34.55	3	STATION EQUATION				
341+80.50		348+25.00	LT	644.5	3	6.4	214.8	644.5	53.8	
348+25.00		348+70.00	LT	45	3	JESSE ROAD 500E (HMA) 348+50				
348+70.00		396+00.00	LT	4730	3	47.3	1557.3	4730.0	395.0	
396+00.00		396+50.00	LT	50	3	PALMER STREET 396+25 (HMA)				
396+50.00		399+46.00	LT	296	3	3.0	98.7	296.0	24.7	
399+46.00		409+78.67	LT	1032.67	3	OMISSION IN NOBLE				
409+78.67		416+00.00	LT	621.33	3	6.2	207.1	621.3	51.9	
416+00.00		416+75.00	LT	75	3	S FIRST STREET 416+15 (HMA)				
416+75.00		422+75.00	LT	600	3	6.0	200.0	600.0	50.1	
422+75.00		423+05.00	LT	30	3	SECOND STREET 422+10 (HMA)				
423+05.00		431+63.14	LT	858.14	3	8.6	286.0	858.1	71.7	
431+63.14	=	431+61.70	LT		3	STATION EQUATION				
431+61.70		462+87.00	LT	3125.3	3	31.3	1041.8	3125.3	261.0	
462+87.00		463+07.00	LT	20	3	PE 462+97 (HMA)				
463+07.00		468+00.00	LT	493	3	4.9	164.3	493.0	41.2	
468+00.00		468+60.00	LT	60	3	WAKEFIELD ROAD 468+30 (HMA)				
468+60.00		477+11.00	LT	851	3	8.5	283.7	851.0	71.1	
477+11.00		477+31.00	LT	20	3	PE 477+21 (HMA)				
477+31.00		477+59.00	LT	28	3	0.3	12.4	28.0	2.3	
477+59.00		477+79.00	LT	20	3	PE 477+69 (HMA)				
477+79.00		489+68.00	LT	1189	3	11.9	396.3	1189.0	99.3	
TOTALS LEFT SHOULDER							427.3	14139.4	42732.9	3569.0

MODEL: Default
 FILE: \\mlls01\B&E\ID\ITEC\Illinois\pwr\WIDOT\Documents\DOT Office\ID\Irt\ 7\Project\71872\CaddData\CAD\akerecs\071872\sh-shoulder.dgn

USER NAME = steffemk	DESIGNED - M. OLTMAN	REVISED -
	DRAWN - M. OLTMAN	REVISED -
PLOT SCALE = 100.0000 ' / in.	CHECKED -	REVISED -
PLOT DATE = 7/2/2018	DATE -	REVISED -

STATE OF ILLINOIS
DEPARTMENT OF TRANSPORTATION

SHOULDER SCHEDULE
LEFT

SCALE: SHEET OF SHEETS STA. TO STA.

F.A.S. RTE.	SECTION	COUNTY	TOTAL SHEETS	SHEET NO.
1720	*	RICHLAND	15	5
*D7 HMA SAFETY SHLD 2019-1			CONTRACT NO. 74872	
ILLINOIS		FED. AID PROJECT		

HOT-MIX ASPHALT SHOULDER SCHEDULE									
STATION	TO	STATION	LANE	LENGTH	WIDTH	EXCAVATING AND GRADING EXISTING SHOULDER UNIT	HOT-MIX ASPHALT SHOULDERS, 8" SQ YD	SHOULDER RUMBLE STRIPS, 8 IN FOOT	AGGREGATE WEDGE SHOULDER, TYPE B TONS
22+15.31		20+75.79	RT	139.52	3	1.4		139.5	11.7
20+75.79	=	28+20.00	RT		3	STATION EQUATION			
28+20.00		43+67.32	RT	1547.32	3	15.5	515.8	1547.3	129.2
43+67.32	=	43+71.63	RT		3	STATION EQUATION			
43+71.63		66+98.99	RT	2327.36	3	23.3	775.8	2327.4	194.4
67+48.99		69+71.01	RT	222.02	3	BRIDGE OMISSION			
69+71.01		86+50.00	RT	1678.99	3	16.8	559.7	1679.0	140.2
86+50.00		87+11.06	RT	61.06	3	STATION EQUATION			
87+11.06		93+23.00	RT	611.94	3	6.1	204.0	611.9	51.1
93+23.00		93+53.00	RT	30	3	PE 93+38 (HMA)			
93+53.00		99+08.00	RT	555	3	5.6	185.0	555.0	46.4
99+08.00		99+28.00	RT	20	3	PE 99+18 (HMA)			
99+28.00		109+73.68	RT	1045.68	3	10.5	348.6	1045.7	87.3
109+73.68	=	109+98.79	RT		3	STATION EQUATION			
109+98.79		114+46.00	RT	447.21	3	4.5	149.1	447.2	37.4
114+46.00		114+81.00	RT	35	3	SHIPLEY ROAD 900E 114+62 (HMA)			
114+81.00		141+00.00	RT	2619	3	26.2	873.0	2619.0	218.7
141+00.00		141+30.00	RT	30	3	BLAIN ROAD 850E 141+15 (HMA)			
141+30.00		144+28.00	RT	298	3	3.0	99.3	298.0	24.9
144+28.00	=	144+24.09	RT		3	STATION EQUATION			
144+24.09		163+56.00	RT	1931.91	3	19.3	644.0	1931.9	161.4
163+56.00		164+00.00	RT	44	2	0.4	9.8	22.5	161.4
164+00.00		164+22.49	RT	22.49	3	0.2	7.5	22.5	3.7
164+22.49	=	164+29.64	RT	7.15	3	STATION EQUATION			
164+29.64		192+77.00	RT	2847.36	3	28.5	949.1	2847.4	237.8
192+77.00		193+43.00	RT	66	3	MIDWAY RD 700 E 193+10 (HMA)			
193+43.00		195+72.00	RT	229	3	2.3	76.3	229.0	19.1
195+72.00		203+50.00	RT	778	2	7.8	172.9	778.0	65.0
203+50.00		204+25.96	RT	75.96	3	0.8	25.3	76.0	6.3
204+25.96	=	204+29.47	RT		3	STATION EQUATION			
204+29.47		206+70.00	RT	240.53	3	2.4	80.2	240.5	20.1
206+70.00		208+72.00	RT	202	3	2.0	67.3	202.0	16.9
208+72.00		210+01.00	RT	129	3	BRIDGE OMISSION			
210+01.00		211+24.00	RT	123	3	1.2	41.0	123.0	10.3
211+24.00		214+60.00	RT	336	3	3.4	112.0	336.0	28.1
214+60.00		217+50.00	RT	290	3	GUARDRAIL OMISSION			
217+50.00		220+93.00	RT	343	3	3.4	114.3	343.0	28.6
220+93.00		221+43.00	RT	50	3	HIGGIN SWITCHROAD 700 E 221+18(HMA)			
221+43.00		227+15.00	RT	572	3	5.7	190.7	572.0	47.8
227+15.00		229+42.95	RT	227.95	2	2.3	50.7	228.0	19.0
229+42.95	=	229+29.23	RT		3	STATION EQUATION			
229+29.23		243+85.00	RT	1455.77	3	14.6	485.3	1455.8	121.6
243+85.00		244+75.00	RT	90	3	AIRPORT ROAD CE 244+30 (HMA)			
244+75.00		275+84.84	RT	3109.84	3	31.1	1036.6	3109.8	259.7
275+84.84	=	275+94.99	RT	10.15	3	STATION EQUATION			

HOT-MIX ASPHALT SHOULDER SCHEDULE									
STATION	TO	STATION	LANE	LENGTH	WIDTH	EXCAVATING AND GRADING EXISTING SHOULDER UNIT	HOT-MIX ASPHALT SHOULDERS, 8" SQ YD	SHOULDER RUMBLE STRIPS, 8 IN FOOT	AGGREGATE WEDGE SHOULDER, TYPE B TONS
275+94.99		275+97.00	RT	2.01	3	0.0	0.7	2.0	0.2
275+97.00		276+40.00	RT	43	3	RIDGE ROAD 600 E 276+18 (HMA)			
276+40.00		297+84.13	RT	2144.13	3	21.4	714.7	2144.1	179.1
297+84.13	=	298+14.36	RT	30.23	3	STATION EQUATION			
298+14.36		298+50.00	RT	35.64	3	PE 298+25 (HMA)			
298+50.00		309+55.00	RT	1105	3	11.1	368.3	1105.0	92.3
309+55.00		309+55.00	RT	0	3	DAYTON LANE 950 N 309+75 (HMA)			
309+95.00		341+45.95	RT	3150.95	3	31.5	1050.3	3151.0	263.2
341+45.95	=	341+80.50	RT		3	STATION EQUATION			
341+80.50		348+15.00	RT	634.5	3	6.3	211.5	634.5	53.0
348+15.00		348+65.00	RT	50	3	JESSE ROAD 500 E 348+40 (HMA)			
348+65.00		352+25.00	RT	360	3	3.6	120.0	360.0	30.1
352+25.00		353+50.00	RT	125	3	RADIO TOWER ROAD 900 N 353+00 (HMA)			
353+50.00		375+60.00	RT	2210	3	22.1	736.7	2210.0	184.6
375+60.00		375+96.00	RT	36	3	CE 375+78 (HMA)			
375+96.00		378+90.00	RT	294	3	2.9	98.0	294.0	24.6
378+90.00		379+20.00	RT	30	3	CE 379+10 (HMA)			
379+20.00		383+10.00	RT	390	3	3.9	130.0	390.0	32.6
383+10.00		383+50.00	RT	40	3	CE 383+30 (HMA)			
383+50.00		386+29.00	RT	279	3	2.8	93.0	279.0	23.3
386+29.00		386+69.00	RT	40	3	CE 386+49 (HMA)			
386+69.00		389+00.00	RT	231	3	2.3	77.0	231.0	19.3
389+00.00		389+40.00	RT	40	3	LUND STREET 389+25 (HMA)			
389+40.00		396+00.00	RT	660	3	6.6	220.0	660.0	55.1
396+00.00		396+50.00	RT	50	3	PALMER STREET 396+25 (HMA)			
396+50.00		401+10.00	RT	460	3	4.6	153.3	460.0	38.4
401+10.00		409+78.67	RT	868.67	3	OMISSION-NOBLE			
409+78.67		416+02.00	RT	623.33	3	6.2	207.8	623.3	52.1
416+02.00		416+75.00	RT	73	3	S FIRST STREET 416+25 (HMA)			
416+75.00		422+65.00	RT	590	3	5.9	196.7	590.0	49.3
422+65.00		423+05.00	RT	40	3	SECOND STREET (HMA) 422+85			
423+05.00		424+12.00	RT	107	3	1.1	35.7	107.0	8.9
424+12.00		424+38.00	RT	26	3	AGGREGATE PE 424+25 (HMA)			
424+38.00		425+90.00	RT	152	3	1.5	50.7	152.0	12.7
425+90.00		426+04.00	RT	14	3	AGGREGATE PE 425+97 (HMA)			
426+04.00		431+63.14	RT	559.14	3	5.6	186.4	559.1	46.7
431+63.14	=	431+61.70	RT		3	STATION EQUATION			
431+61.70		467+96.00	RT	3634.3	3	36.3	1211.4	3634.3	303.5
467+96.00		468+36.00	RT	40	3	WAKEFIELD ROAD 468+25 (HMA)			
468+36.00		489+68.00	RT	2132	3	21.6	720.7	2162.0	180.6
TOTAL RIGHT SHOULDERS			RT			435.6	14355.9	4357.2	3646.2
TOTAL LEFT SHOULDERS			LT			428.3	14172.7	4283.9	3577.3
TOTAL SHOULDERS						863.9	28528.6	8639.1	7223.5

MODEL: Default
 FILE: \\u0000\B&E\ID\ITC\Illinois\poc\p\WIDOT\Documents\DOT Office\Sheet\7-Project\74872\CADDData\CAD\Sheet\74872-shl-schedule.dgn

USER NAME = stefenmk	DESIGNED - M. OLTMAN	REVISED -
	DRAWN - M. OLTMAN	REVISED -
PLOT SCALE = 100.0000' / in.	CHECKED -	REVISED -
PLOT DATE = 7/2/2018	DATE -	REVISED -

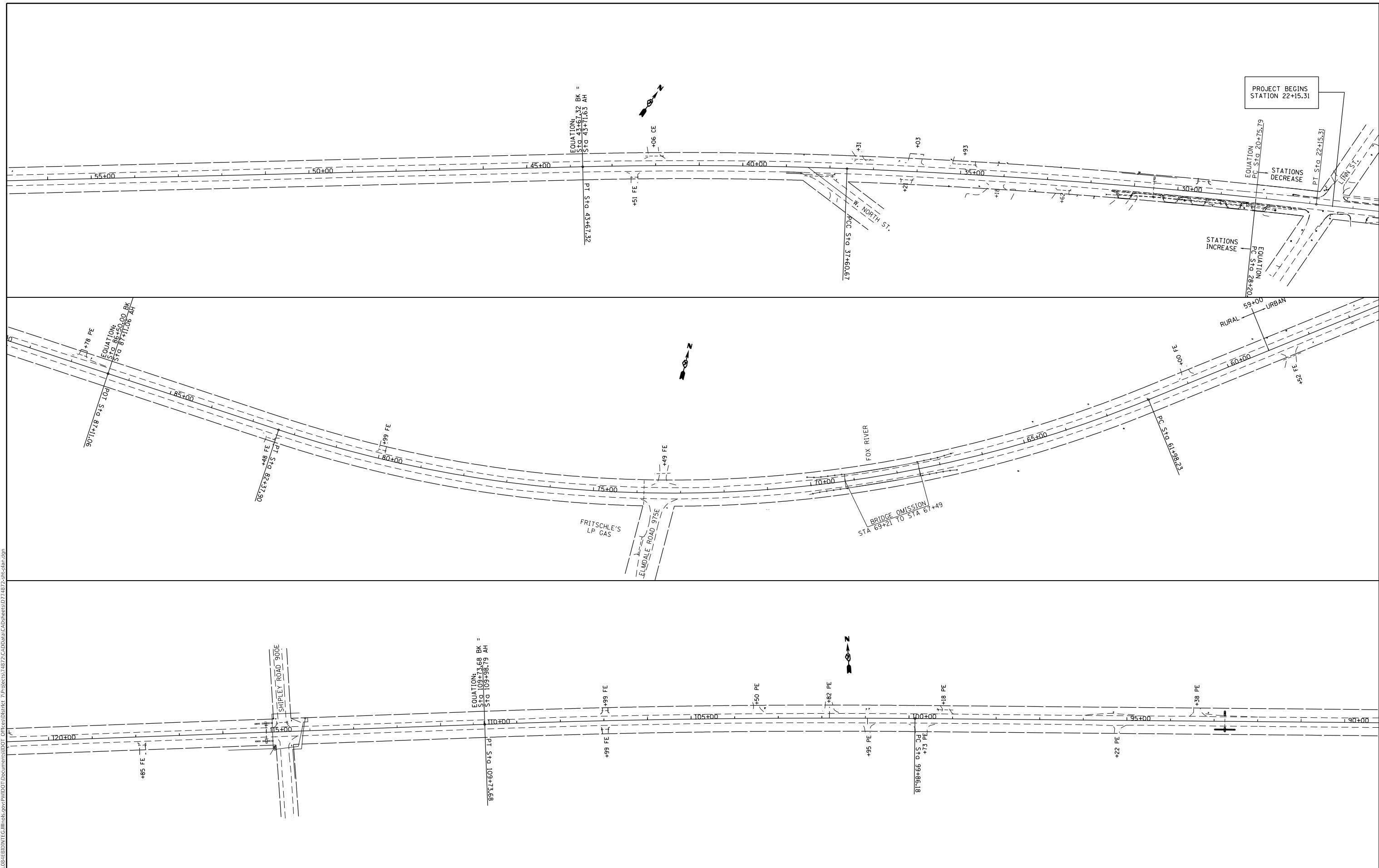
**STATE OF ILLINOIS
DEPARTMENT OF TRANSPORTATION**

**SHOULDER SCHEDULE
RIGHT**

SCALE: SHEET OF SHEETS STA. TO STA.

F.A.S. RTE.	SECTION	COUNTY	TOTAL SHEETS	SHEET NO.
1720	*	RICHLAND	15	6
*D7 HMA SAFETY SHLD 2019-1		CONTRACT NO. 74872		
ILLINOIS		FED. AID PROJECT		

MODEL: Default
 FILE NAME: P:\IL08\B&E\BID\ITEC\Illinois.ppsx\PIV\DOT\Documents\100T\Office\100T\100T\74872_CADD\DATA\CAD\AKERS\1074872-shc-plan.dgn



USER NAME = steffemk	DESIGNED - M OLTMAN	REVISED -
	DRAWN - M OLTMAN	REVISED -
PLOT SCALE = 200.0000' / in.	CHECKED -	REVISED -
PLOT DATE = 7/2/2018	DATE -	REVISED -

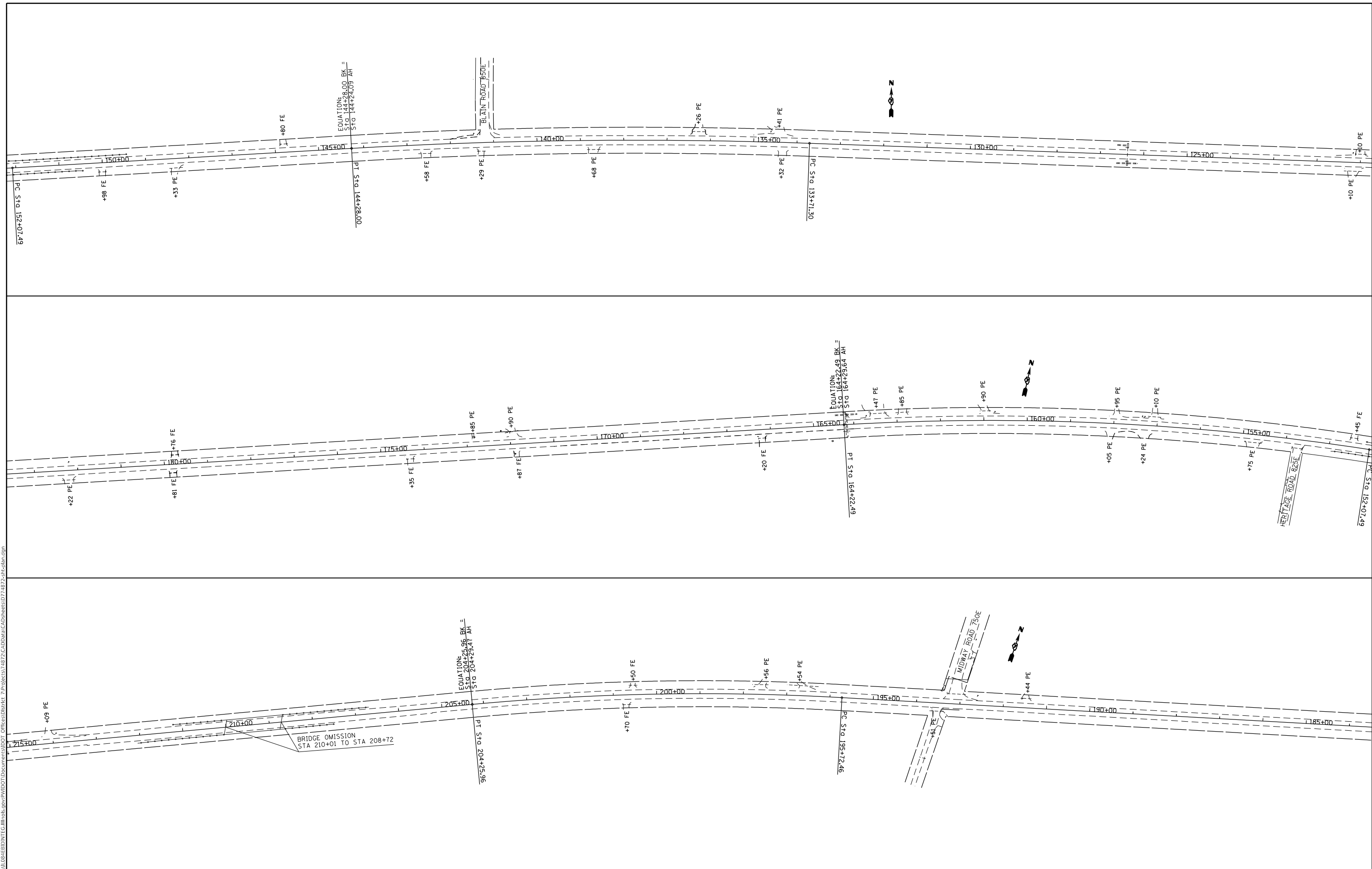
**STATE OF ILLINOIS
 DEPARTMENT OF TRANSPORTATION**

**PLAN VIEW
 STA. 22 + 15 TO STA 120 + 00**

SCALE: SHEET OF SHEETS STA. TO STA.

F.A.S. RTE.	SECTION	COUNTY	TOTAL SHEETS	SHEET NO.
1720		RICHLAND	15	7
*07 HMA SAFETY SHLD 2019-1		CONTRACT NO. 74872		
ILLINOIS		FED. AID PROJECT		

MODEL: Default
 FILE NAME: P:\1108\B&E\BIDD\ITEC\Illinois.gov\PWIDOT\Documents\1007\Projects\17872_CADD\data\CAD\records\17872-shc-plan.dgn



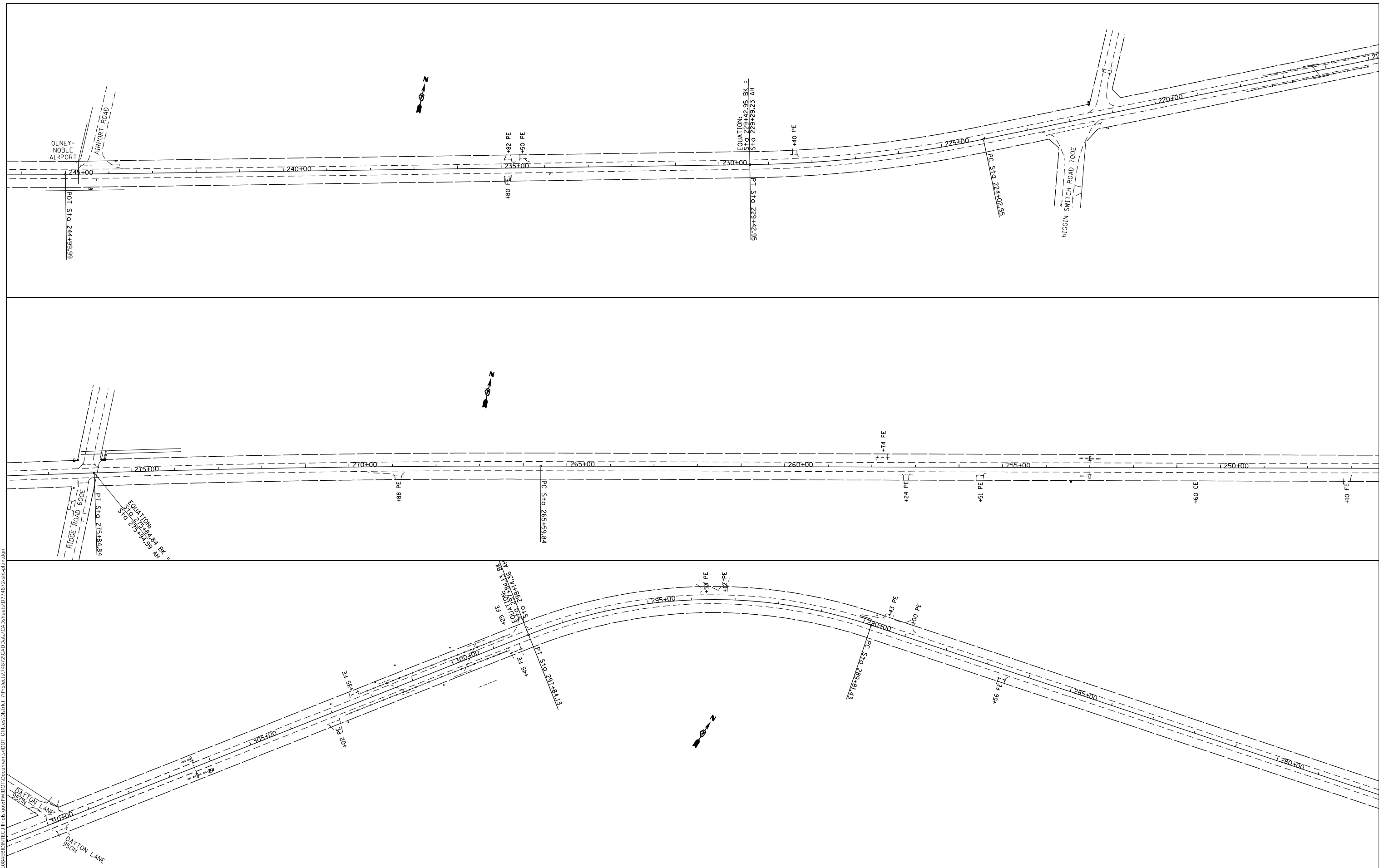
USER NAME = steffemk	DESIGNED - M OLTMAN	REVISED -
	DRAWN - M OLTMAN	REVISED -
PLOT SCALE = 200.0000' / in.	CHECKED -	REVISED -
PLOT DATE = 7/2/2018	DATE -	REVISED -

**STATE OF ILLINOIS
 DEPARTMENT OF TRANSPORTATION**

**PLAN VIEW
 STA. 120+00 TO STA. 215+00**

SCALE: SHEET OF SHEETS STA. TO STA.

F.A.S. RTE. 1720	SECTION *	COUNTY RICHLAND	TOTAL SHEETS 15	SHEET NO. 8
*07 HMA SAFETY SHLD 2019-1		CONTRACT NO. 74872		
ILLINOIS FED. AID PROJECT				



MODEL: Default
 FILE NAME: P:\IL08\B&E\BID\NTEC\Illinois.gov\RWID\DOT\Documents\1807\Office\1807\1807_CADD\DATA\CAD\pkcs174872\shc\plan.dgn

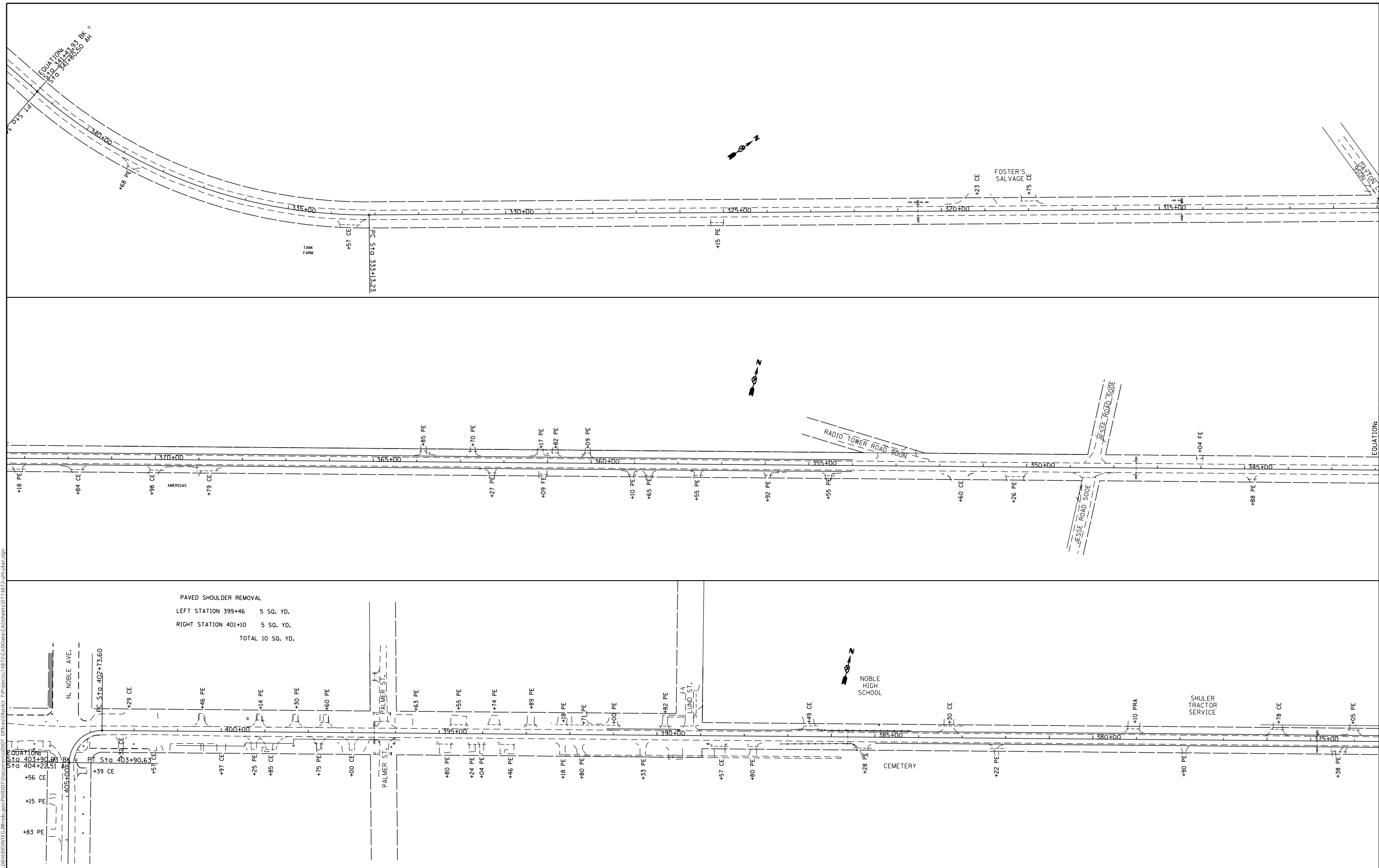
USER NAME = steffemk	DESIGNED - M OLTMAN	REVISED -
DRAWN - M OLTMAN	REVISED -	
PLOT SCALE = 200.0000 ' / in.	CHECKED -	REVISED -
PLOT DATE = 7/2/2018	DATE -	REVISED -

STATE OF ILLINOIS
DEPARTMENT OF TRANSPORTATION

PLAN VIEW			
STA.. 215 + 00 TO STA.. 310 + 00			
SCALE:	SHEET	OF SHEETS	STA. TO STA.

F.A.S RTE.	SECTION	COUNTY	TOTAL SHEETS	SHEET NO.
1720		RICHLAND	15	9
*07 HMA SAFETY SHLD 2019-1		CONTRACT NO. 74872		
ILLINOIS FED. AID PROJECT				

MODEL: Default
 FILE: hma\p\1108\BEBID\NITEC\Illinois\pov\PWIDOT\Documents\DOT_Offices\I1872_CADD\data\CAD\pkcs11872_74872-shd-plan.dgn



PAVED SHOULDER REMOVAL
 LEFT STATION 399+46 5 SO. YD.
 RIGHT STATION 401+10 5 SO. YD.
 TOTAL 10 SO. YD.

**STATE OF ILLINOIS
 DEPARTMENT OF TRANSPORTATION**

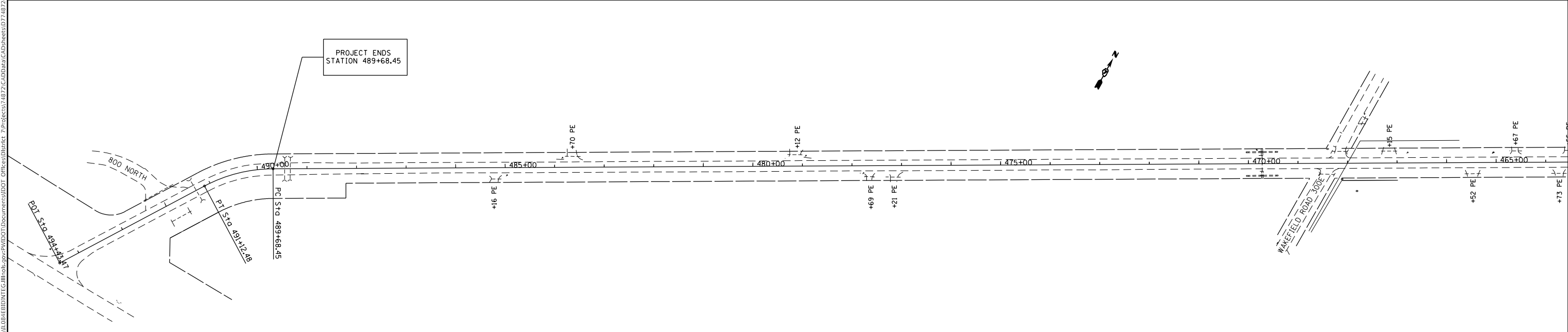
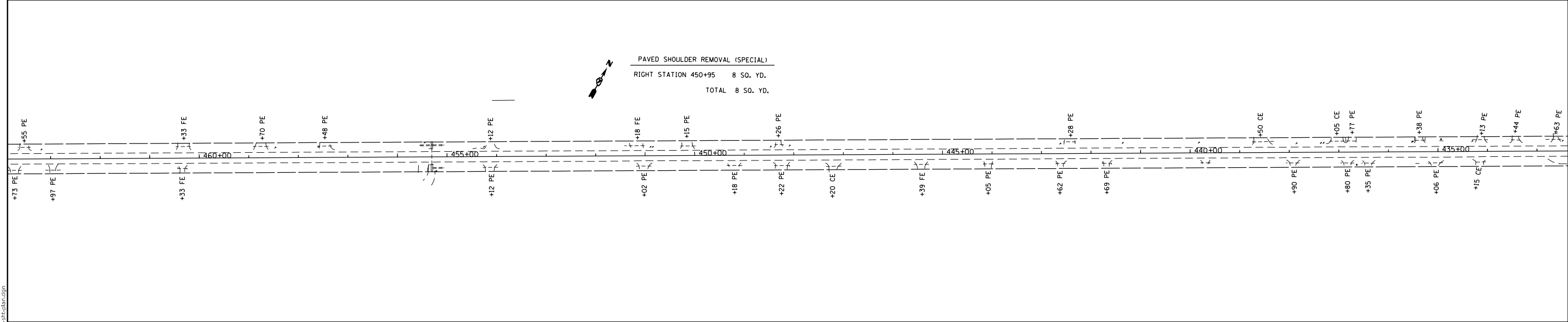
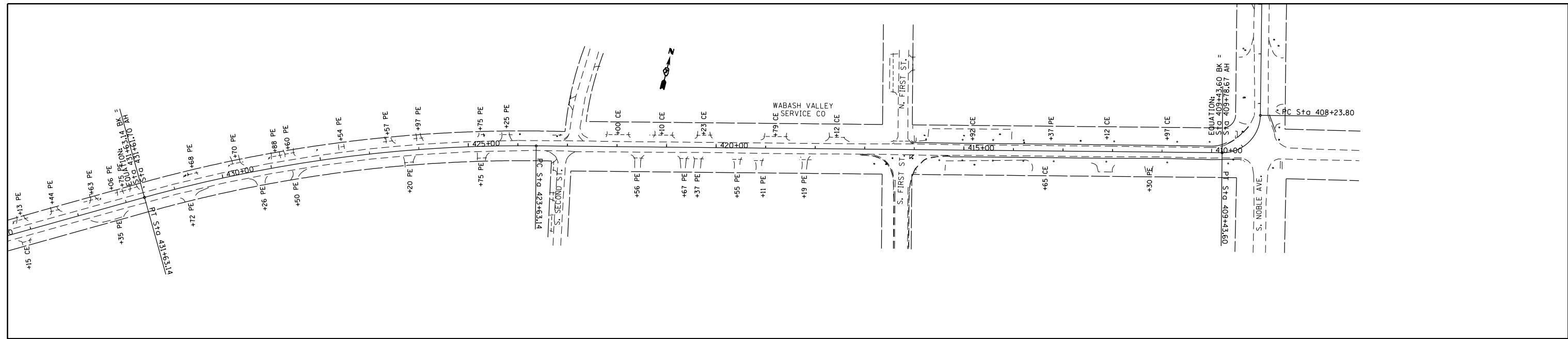
**PLAN VIEW
 STA. 310 + 00 TO STA. 407 + 00**

USER NAME = stefhenmk	DESIGNED - M OLTMAN	REVISED -
	DRAWN - M OLTMAN	REVISED -
PLOT SCALE = 200.0000' / in.	CHECKED -	REVISED -
PLOT DATE = 7/2/2018	DATE -	REVISED -

SCALE: SHEET OF SHEETS STA. TO STA.

F.A.S RTE. 1720	SECTION	COUNTY	TOTAL SHEETS	SHEET NO.
		RICHLAND	15	10
*07 HMA SAFETY SHLD 2019-1		CONTRACT NO. 74872		
ILLINOIS FED. AID PROJECT				

MODEL: Default
 FILE NAME: P:\ILLINOIS\BID\DOT\Documents\18072_CADD\data\CAD\sheet\18072-4872-shc-plan.dgn



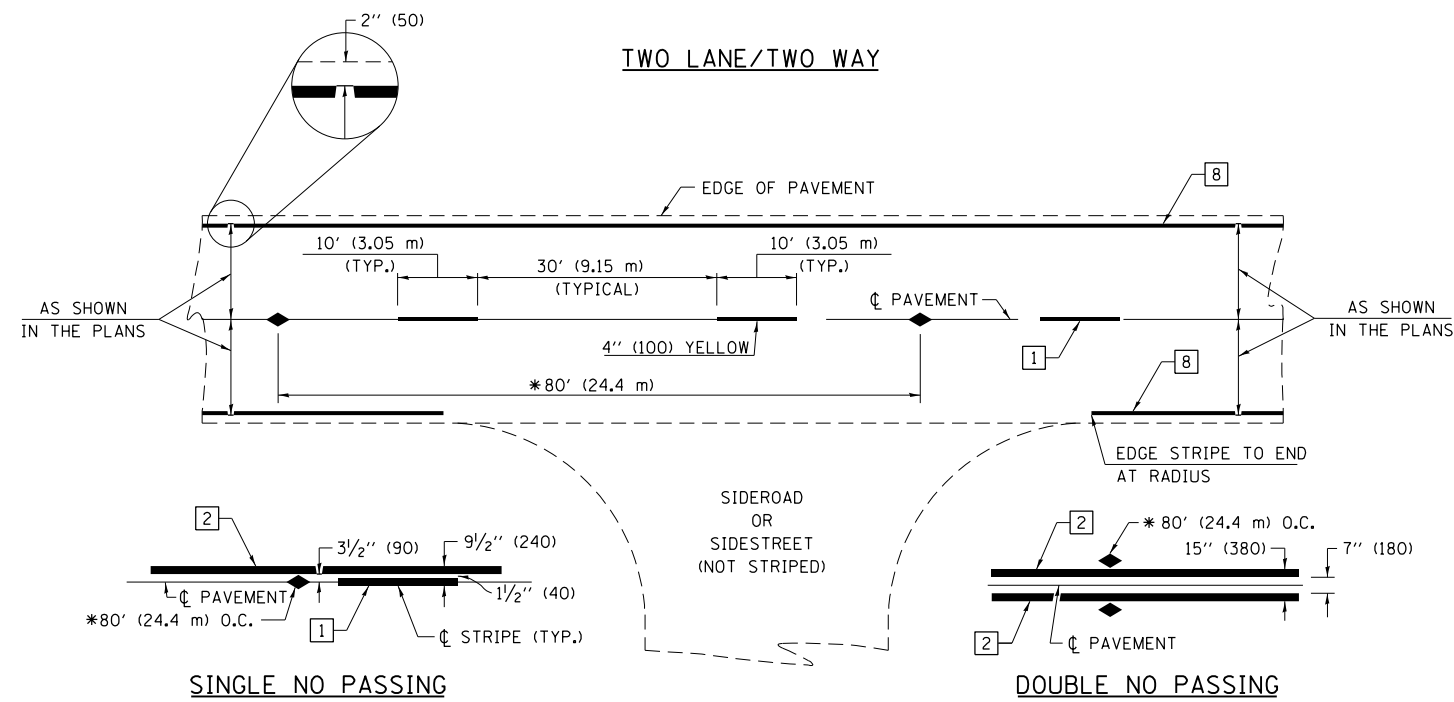
USER NAME = steffemk	DESIGNED - M OLTMAN	REVISED -
DRAWN - M OLTMAN	REVISED -	
PLOT SCALE = 200.0000' / in.	CHECKED -	REVISED -
PLOT DATE = 7/2/2018	DATE -	REVISED -

**STATE OF ILLINOIS
 DEPARTMENT OF TRANSPORTATION**

**PLAN VIEW
 STA. 407+00 TO STA. 494+00**

SCALE: SHEET OF SHEETS STA. TO STA.

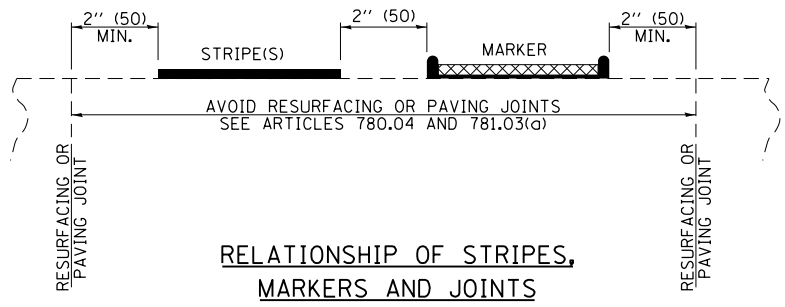
F.A.S. RTE.	SECTION	COUNTY	TOTAL SHEETS	SHEET NO.
1720		RICHLAND	15	11
*07 HMA SAFETY SHLD 2019-1		CONTRACT NO. 74872		
ILLINOIS FED. AID PROJECT				



* REDUCE TO 40' (12.2 m) O.C. ON CURVES WITH POSTED OR ADVISORY SPEEDS OF 45 mph (70 km/h) OR LESS.

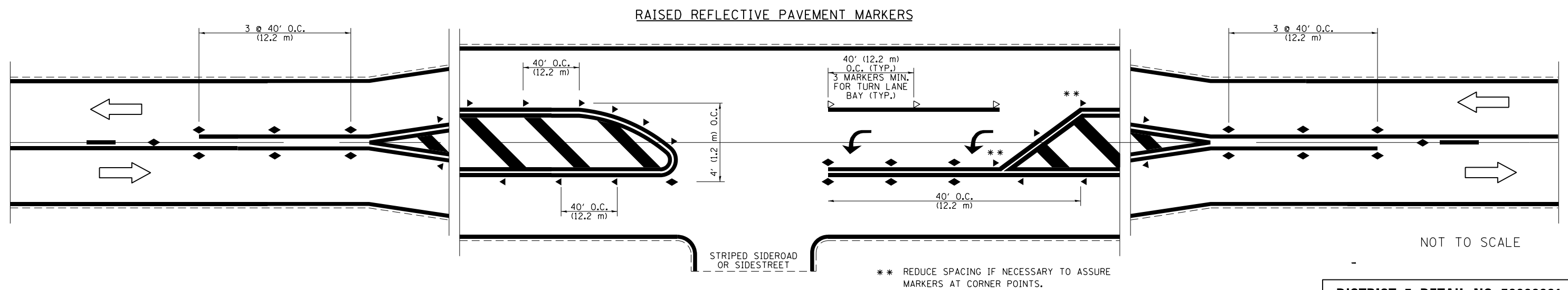
PAVEMENT MARKING LEGEND

- 1 4" (100) SKIP-DASH (YELLOW)
 - 2 4" (100) SOLID (YELLOW)
 - 3 12" (300) DIAGONAL (YELLOW)
 - 4 4" (100) DOUBLE YELLOW (NARROW)
 - 5 12" (300) SOLID WHITE
 - 6 RESERVED
 - 7 6" (150) SKIP-DASH (WHITE)
 - 8 4" (100) SOLID (WHITE)
 - 9 12" (300) DIAGONAL (WHITE)
 - 10 6" (150) SOLID (WHITE)
 - 11 24" (600) STOP BAR (WHITE)
 - 12 8" (200) SOLID (WHITE)
 - 13 4" (100) PARKING WHITE
-



TYPICAL PAVEMENT MARKERS LEGEND

- ◆ TWO-WAY AMBER MARKER
- ▶ ONE-WAY AMBER MARKER
- ▷ ONE-WAY CRYSTAL MARKER



MODEL: Default FILE: \\nas0101\B&E\BID\ITC\Illinois\pov\p\W\DOT\Documents\1\DOT Office\1\District 7\Projects\74872\CaddData\CAD\Sheet\74872-sh-detailed.dgn

USER NAME = steffemk	DESIGNED - M. OLTMAN	REVISED -
DRAWN - M OLTMAN	REVISED -	
PLOT SCALE = 100.0000' / in.	CHECKED -	REVISED -
PLOT DATE = 7/2/2018	DATE -	REVISED -

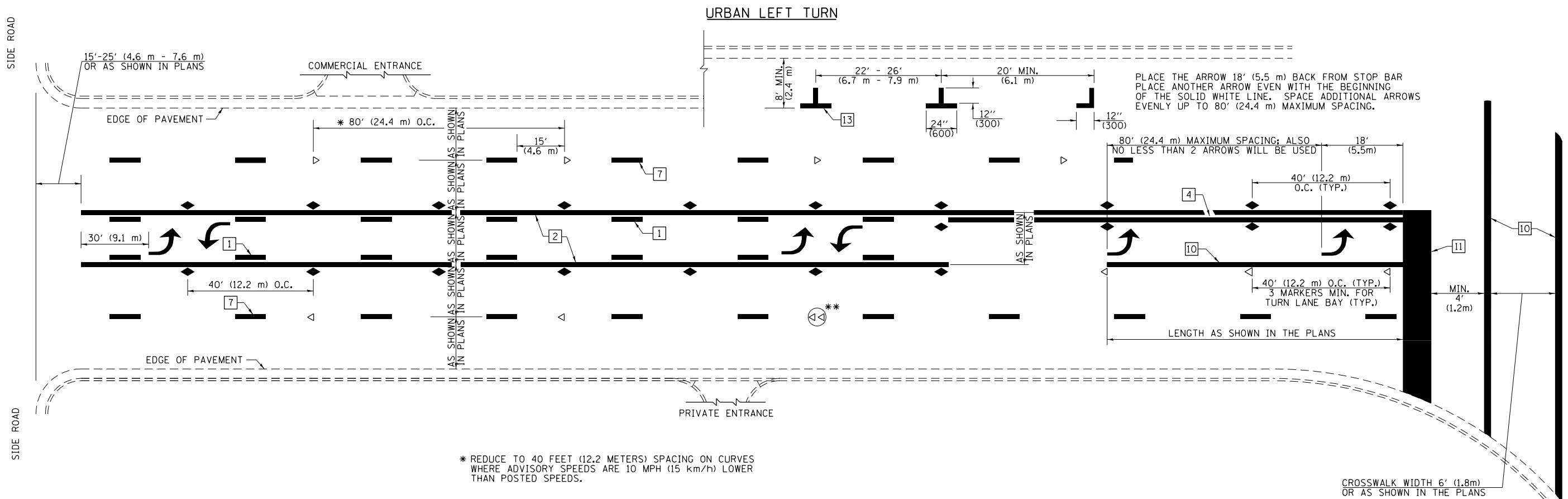
**STATE OF ILLINOIS
DEPARTMENT OF TRANSPORTATION**

**PAVEMENT MARKING AND RAISED REFLECTIVE PAVEMENT MARKING
(RURAL & URBAN APPLICATIONS)**

SCALE: SHEET OF SHEETS STA. TO STA.

DISTRICT 7 DETAIL NO. 7800001

F.A.S RTE.	SECTION	COUNTY	TOTAL SHEETS	SHEET NO.
1720	*	RICHLAND	15	12
*D7 HMA SAFETY SHLD 2019-1			CONTRACT NO. 74872	
ILLINOIS		FED. AID PROJECT		



* REDUCE TO 40 FEET (12.2 METERS) SPACING ON CURVES WHERE ADVISORY SPEEDS ARE 10 MPH (15 km/h) LOWER THAN POSTED SPEEDS.

** DOUBLE LANE LINE MARKERS SHALL BE SPECIFIED AND SPACED AS SHOWN IN HIGHWAY STANDARD 781001 FOR MULTI-LANE DIVIDED AND UNDIVIDED HIGHWAYS.

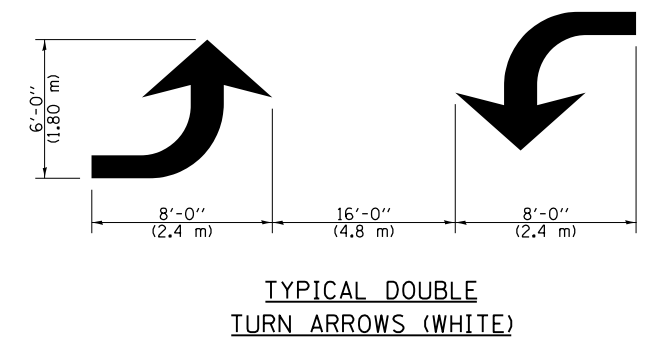
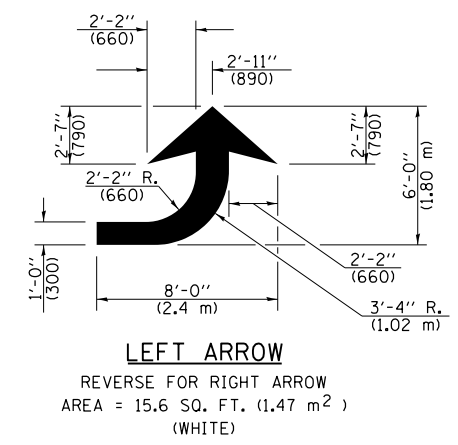
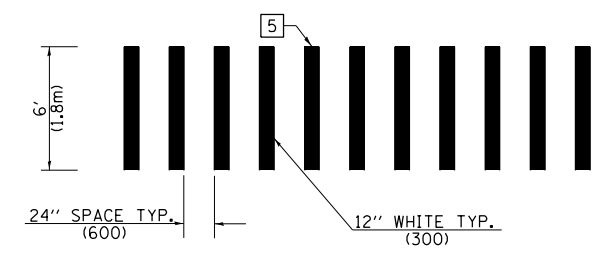
PAVEMENT MARKING LEGEND

- 1 4" (100) SKIP-DASH (YELLOW)
 - 2 4" (100) SOLID (YELLOW)
 - 3 12" (300) DIAGONAL (YELLOW)
 - 4 4" (100) DOUBLE YELLOW (NARROW)
 - 5 12" (300) SOLID WHITE
 - 6 RESERVED
 - 7 6" (150) SKIP-DASH (WHITE)
 - 8 4" (100) SOLID (WHITE)
 - 9 12" (300) DIAGONAL (WHITE)
 - 10 6" (150) SOLID (WHITE)
 - 11 24" (600) STOP BAR (WHITE)
 - 12 8" (200) SOLID (WHITE)
 - 13 4" (100) PARKING WHITE
-

GENERAL NOTES



LANE LINE EXTENSIONS



TYPICAL DOUBLE TURN ARROWS (WHITE)

NOT TO SCALE

MODEL: Default
 FILE: \\nas0101\proj\p1701\DOT\Documents\1701\Projects\74872\CADD\Drawings\74872-01-detailed.dgn
 PROJECT: 74872\CADD\Drawings\74872-01-detailed.dgn

USER NAME = steffenk	DESIGNED - M. OLTMAN	REVISED -
DRAWN - M. OLTMAN	REVISED -	
PLOT SCALE = 100.0000' / in.	CHECKED -	REVISED -
PLOT DATE = 7/2/2018	DATE -	REVISED -

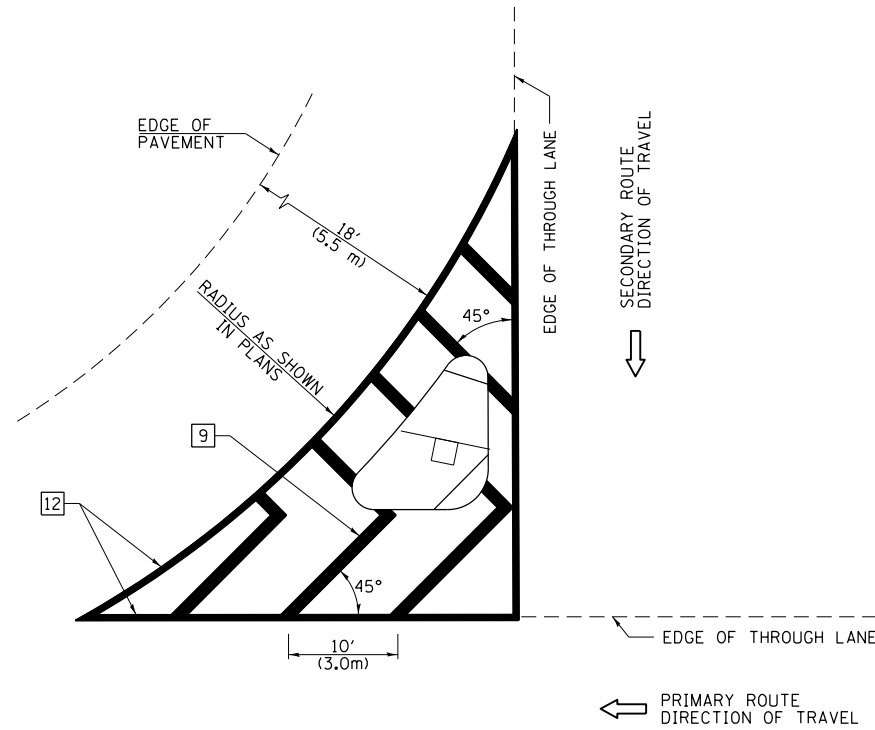
**STATE OF ILLINOIS
DEPARTMENT OF TRANSPORTATION**

**PAVEMENT MARKING AND RAISED REFLECTIVE PAVEMENT MARKING
(RURAL & URBAN APPLICATIONS)**

SCALE: SHEET OF SHEETS STA. TO STA.

DISTRICT 7 DETAIL NO. 7800001				
F.A.S. RTE.	SECTION	COUNTY	TOTAL SHEETS	SHEET NO.
1720	*	RICHLAND	15	13
*D7 HMA SAFETY SHLD 2019-1			CONTRACT NO. 74872	
ILLINOIS			FED. AID PROJECT	

ISLAND

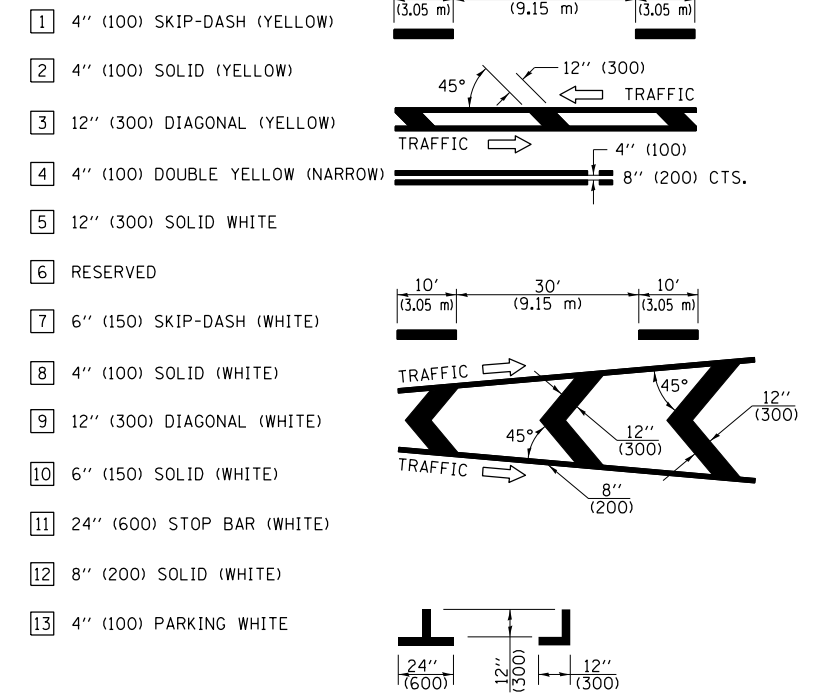


GENERAL NOTES

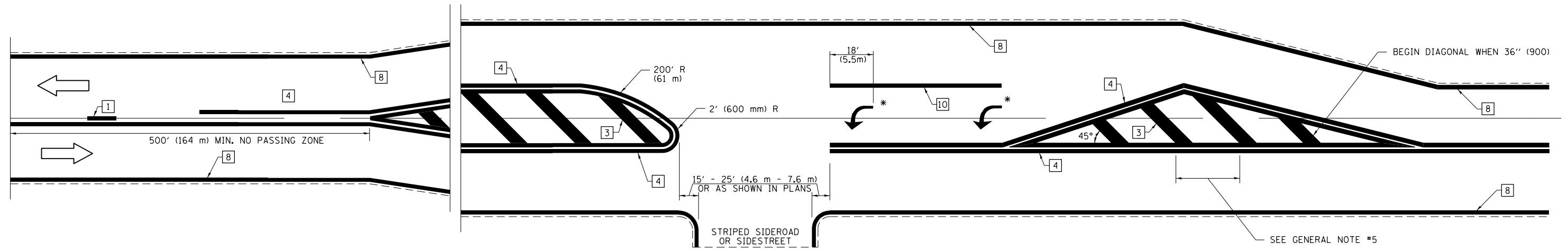
1. RAISED AND CORRUGATED MEDIANS SHALL BE OUTLINED WITH [2] IF PRESENT.
2. SOME OF THE INFORMATION INCLUDED WITH THIS DETAIL MAY NOT BE APPLICABLE TO THIS IMPROVEMENT.
3. PAVEMENT MARKINGS ARE TO BE EXTENDED THROUGH OMISSIONS WHEN APPLICABLE.
4. FINAL PAVEMENT MARKINGS SHALL BE IN PLACE PRIOR TO PLACING ANY RAISED REFLECTIVE PAVEMENT MARKERS.
5. THE FOLLOWING CRITERIA SHALL BE USED FOR SELECTING THE DIAGONAL PAVEMENT MARKING SPACING:

< 30 MPH (< 50 km/h)	15' (4.5 m)
30-45 MPH (50-75 km/h)	20' (6.0 m)
> 45 MPH (> 75 km/h)	30' (9.0 m)

PAVEMENT MARKING LEGEND



RURAL LEFT TURN STRIPING



* PLACE AN ARROW 18' (5.5 m) BACK FROM STOP BAR. PLACE ANOTHER ARROW EVEN WITH THE BEGINNING OF THE SOLID WHITE LINE. SPACE ADDITIONAL ARROWS EVENLY UP TO 80' (24.4 m) MAXIMUM SPACING. USE MINIMUM OF 2 ARROWS.

NOT TO SCALE

DISTRICT 7 DETAIL NO. 7800001

USER NAME = steffemk	DESIGNED - M. OLTMAN	REVISED -
	DRAWN - M OLTMAN	REVISED -
PLOT SCALE = 100.0000' / in.	CHECKED -	REVISED -
PLOT DATE = 7/2/2018	DATE -	REVISED -

**STATE OF ILLINOIS
DEPARTMENT OF TRANSPORTATION**

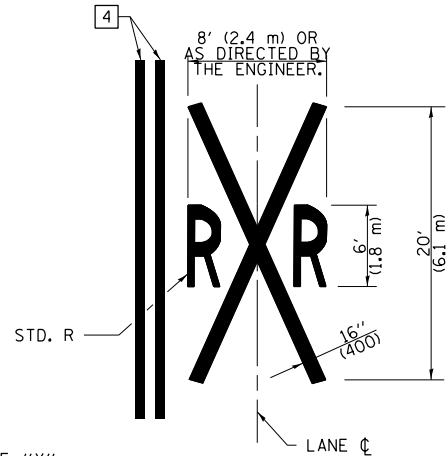
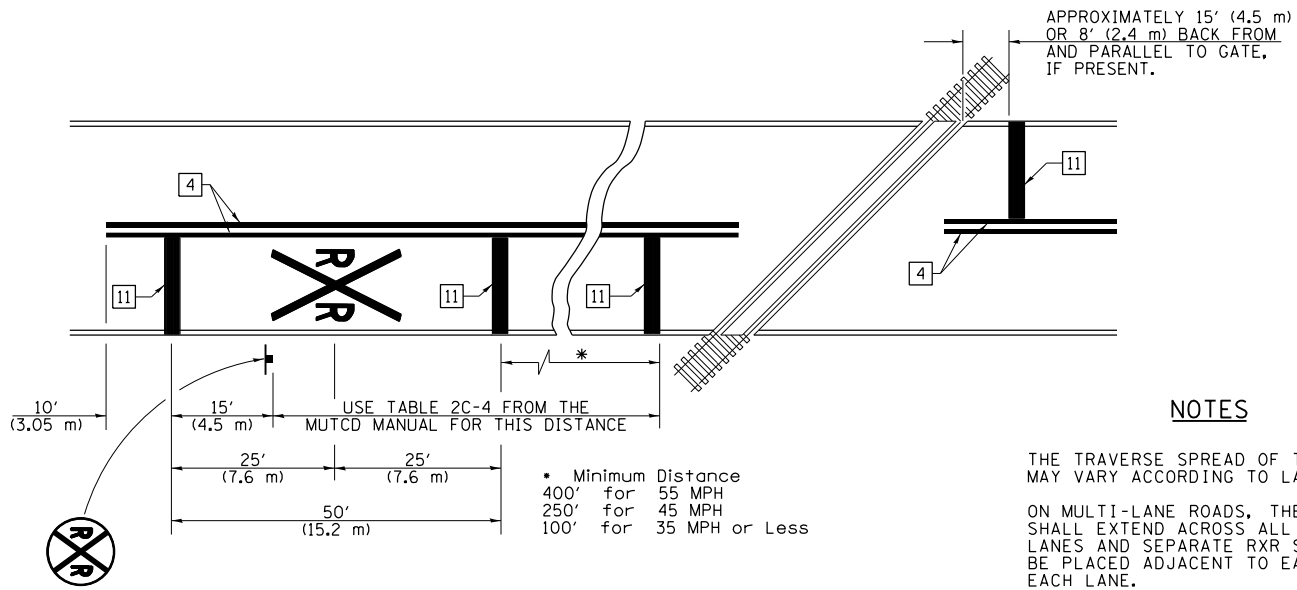
**PAVEMENT MARKING AND RAISED REFLECTIVE PAVEMENT MARKING
(RURAL & URBAN APPLICATIONS)**

SCALE: SHEET OF SHEETS STA. TO STA.

F.A.S. RTE.	SECTION	COUNTY	TOTAL SHEETS	SHEET NO.
1720	*	RICHLAND	15	14
*D7 HMA SAFETY SHLD 2019-1			CONTRACT NO. 74872	
ILLINOIS FED. AID PROJECT				

MODEL: Default
FILE NAME: P:\ILLINOIS\B&E\BIDDING\TEC\Illinois.gov\PIWDOT\Documents\DOT_Offices\District 7\Projects\171872_CADD\Data\CAD\Sheet\ID74872-sh-detailed.dgn

PAVEMENT MARKINGS AT RAILROAD-HIGHWAY GRADE CROSSING



NOTES

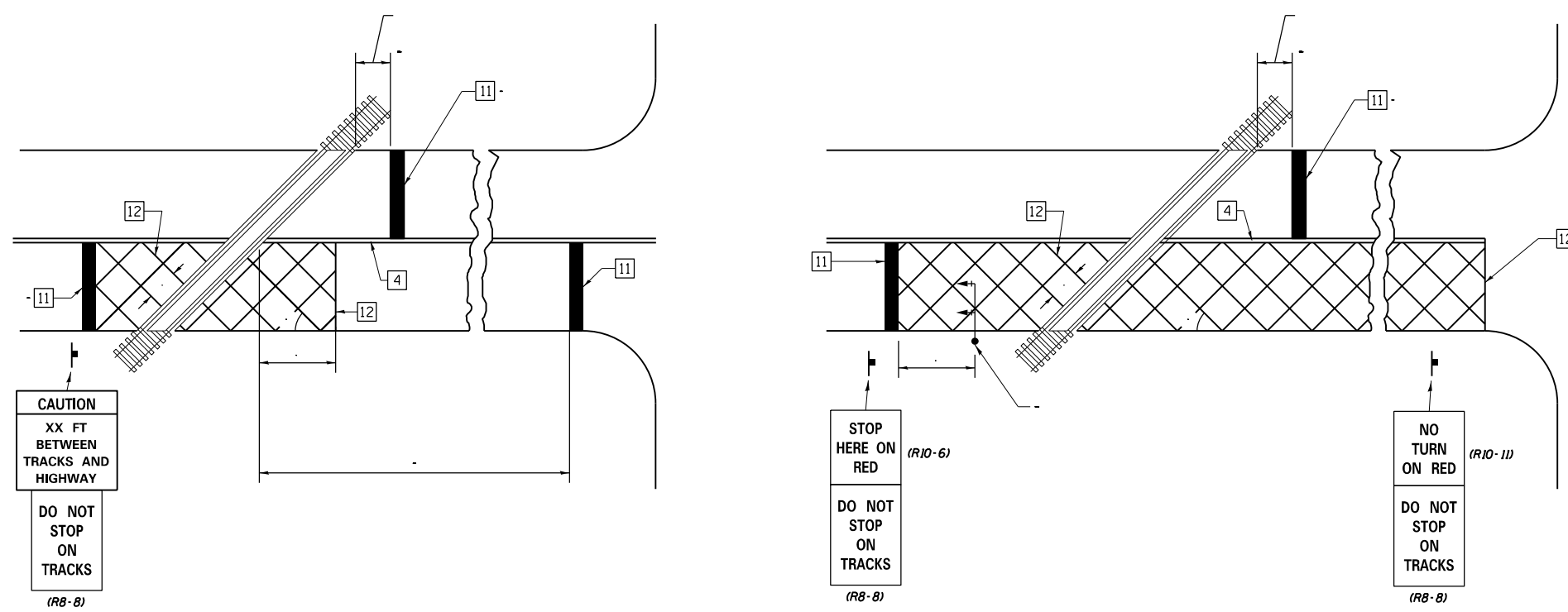
THE TRAVERSE SPREAD OF THE "X" MAY VARY ACCORDING TO LANE WIDTH.

ON MULTI-LANE ROADS, THE STOP LINES SHALL EXTEND ACROSS ALL APPROACH LANES AND SEPARATE RXR SYMBOLS SHALL BE PLACED ADJACENT TO EACH OTHER IN EACH LANE.

WHEN THE PAVEMENT MARKING SYMBOL IS USED, A PORTION OF THE SYMBOL SHOULD BE LOCATED DIRECTLY ADJACENT TO THE ADVANCE WARNING SIGN (W10-1) AS PLACED BY TABLE II-1, CONDITION B OF THE MUTCD.

PAVEMENT MARKING LEGEND

- 1 4" (100) SKIP-DASH (YELLOW)
- 2 4" (100) SOLID (YELLOW)
- 3 12" (300) DIAGONAL (YELLOW)
- 4 4" (100) DOUBLE YELLOW (NARROW)
- 5 12" (300) SOLID WHITE
- 6 RESERVED
- 7 6" (150) SKIP-DASH (WHITE)
- 8 4" (100) SOLID (WHITE)
- 9 12" (300) DIAGONAL (WHITE)
- 10 6" (150) SOLID (WHITE)
- 11 24" (600) STOP BAR (WHITE)
- 12 8" (200) SOLID (WHITE)
- 13 4" (100) PARKING WHITE



GENERAL NOTES

1. SUPPLEMENTAL PAVEMENT MARKINGS TO BE INSTALLED ONLY ON APPROACHES TO INTERSECTIONS CONTROLLED BY TRAFFIC SIGNALS WHICH ARE INTERCONNECTED WITH THE RAILROAD WARNING SIGNALS.
2. EXTEND PAVEMENT MARKINGS TO THE INTERSECTION ONLY WHERE NEAR-SIDE TRAFFIC SIGNALS ARE USED.

NOT TO SCALE

SUPPLEMENTAL PAVEMENT MARKING TREATMENT FOR RAILROAD-HIGHWAY GRADE CROSSING

MODEL: Default
FILE: \\nas010\p001\B&E\BID\ITC\Illinois\p001\B&E\BID\DOT\Documents\DOT - Office\BID\Drawt 7\Projects\174872\CADD\Drawings\174872-ph-drawt.dgn

USER NAME = steffemk	DESIGNED - M. OLTMAN	REVISED -
	DRAWN - M OLTMAN	REVISED -
PLOT SCALE = 100,0000' / in.	CHECKED -	REVISED -
PLOT DATE = 7/2/2018	DATE -	REVISED -

STATE OF ILLINOIS
DEPARTMENT OF TRANSPORTATION

PAVEMENT MARKING AND RAISED REFLECTIVE PAVEMENT MARKING
(RURAL & URBAN APPLICATIONS)

SCALE: SHEET OF SHEETS STA. TO STA.

DISTRICT 7 DETAIL NO. 7800001

F.A.S. RTE.	SECTION	COUNTY	TOTAL SHEETS	SHEET NO.
1720	*	RICHLAND	15	15
*D7 HMA SAFETY SHLD 2019-1			CONTRACT NO. 74872	
		ILLINOIS	FED. AID PROJECT	