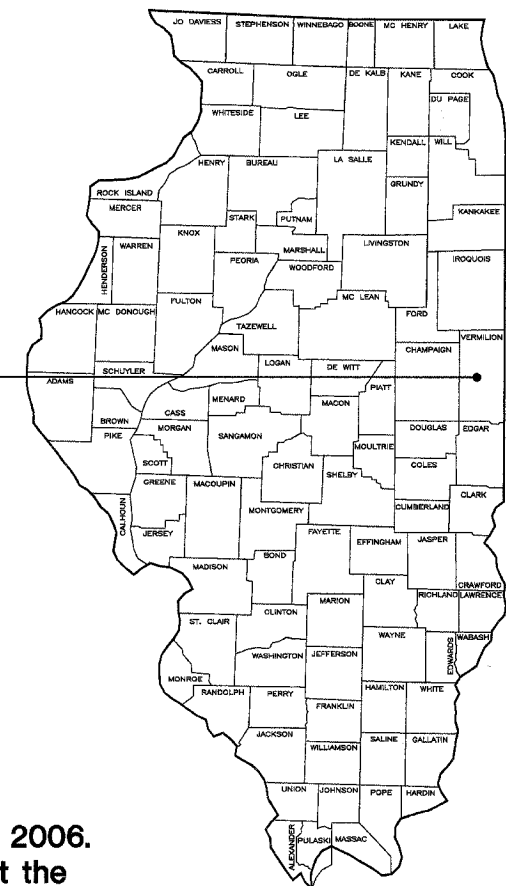


State of Illinois
Department of Natural Resources
Office of Mines and Minerals
Division of Abandoned Mined Lands

Funded by the
 United States Department of Interior
 Federal Office of Surface Mining

Vermilion County Mine Group
Reclamation Project
AML-GVeE-0507
Vermilion County
1LR

Vermilion County Mine Group
 Vermilion County



Note:


A pre-bid meeting is scheduled for this project at 10:00 A.M., Friday, September 8, 2006. All interested potential bidders are to meet in the mountain bike trail parking lot at the intersection of County Roads 1200 E and 1950 N in Kickapoo State Park. See Sheet 2 for the location map to this parking lot.

SCHEDULE OF DRAWINGS:

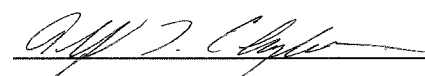
1. Cover Sheet
2. Location Maps
3. Summary of Quantities/General Notes
4. Typical Sections/ Survey Information
5. Existing & Proposed Conditions - Kickapoo State Park
6. Existing & Proposed Conditions - Woodard Mine Openings
7. Existing & Proposed Conditions - Brookville Area Mine Shaft #5
8. Existing & Proposed Conditions - Brookville Area Strip Mine
- 9-15. Cross Sections - Kickapoo State Park
- 16-17. Cross Sections - Kickapoo State Park
18. Pipe Culvert Profiles
19. Details (Shaft Filling & Mine Opening Marker)
 - IDOT Standard 542101 - Reinforced Concrete End Sections for Pipe Culverts, 375mm (15") thru 900 mm (36") Diam. at Right Angle with Roadway
 - IDOT Standard 542311 - Grating for Concrete Flared End Section for 600 mm (24") thru 1300 mm (54") Pipe
 - IDOT Standard 702001 - Traffic Control Devices
 - IDOT Standard BLR-18-4 - Traffic Control Devices - Day Labor Maintenance

Prepared By IDNR Staff

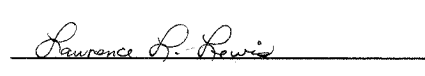
Approved for Bidding:


 Joseph R. Angleton, Director
 Office of Mines and Minerals

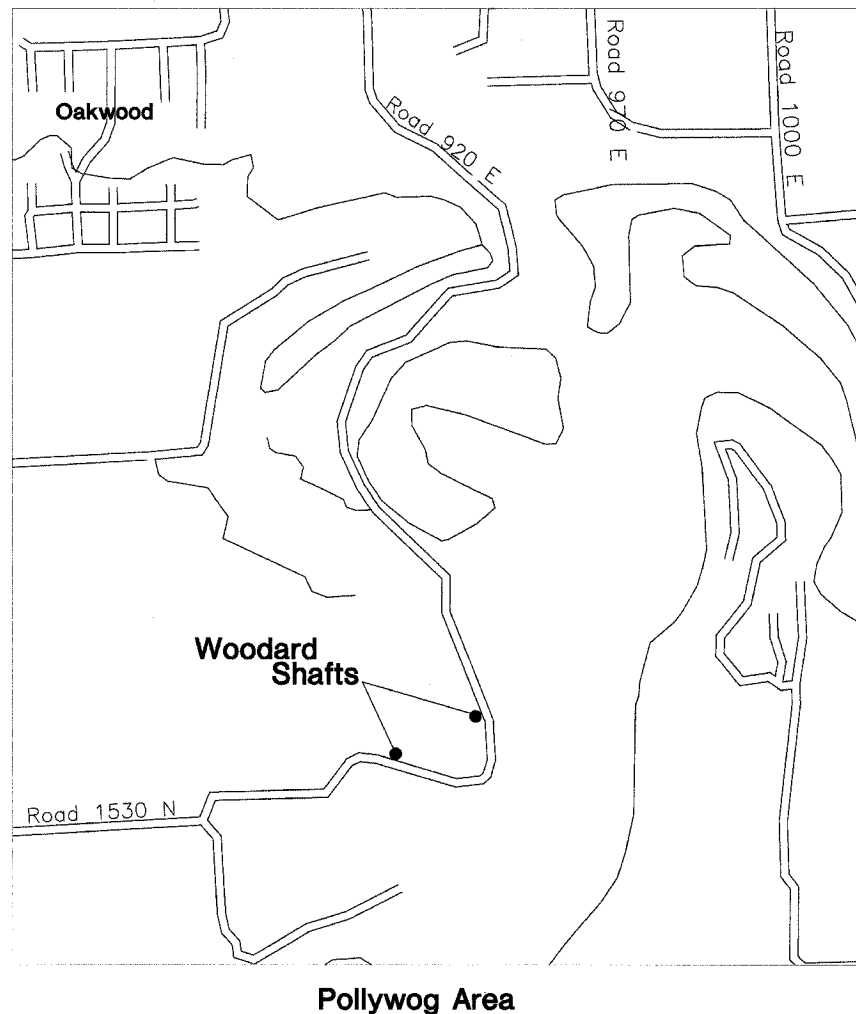
Approved By:


 Alfred L. Clayborne, Manager
 AML Division

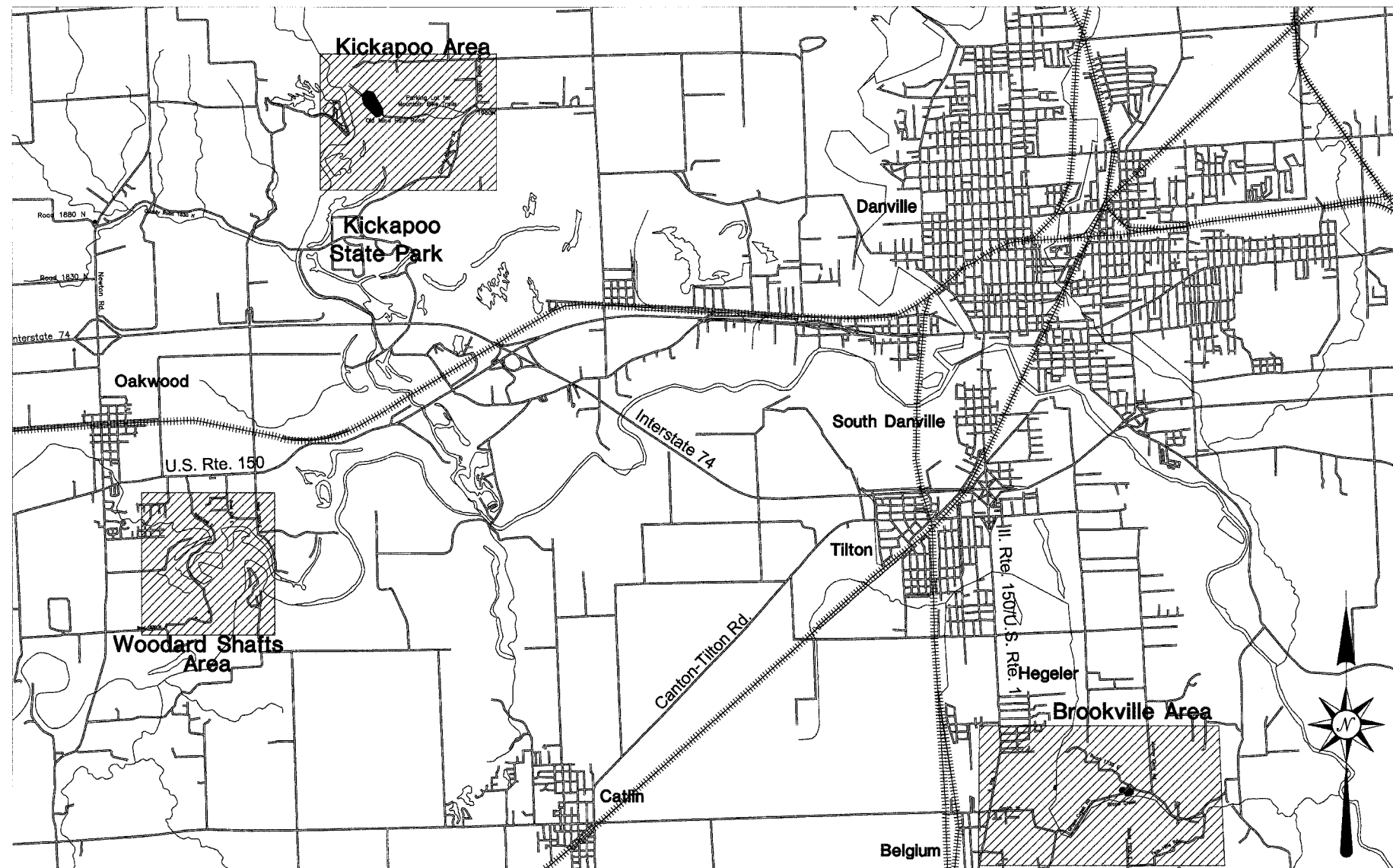
Approved By:


 Lawrence L. Lewis, P.E.
 IL Licensed Professional Engineer
 No. 0062-038880

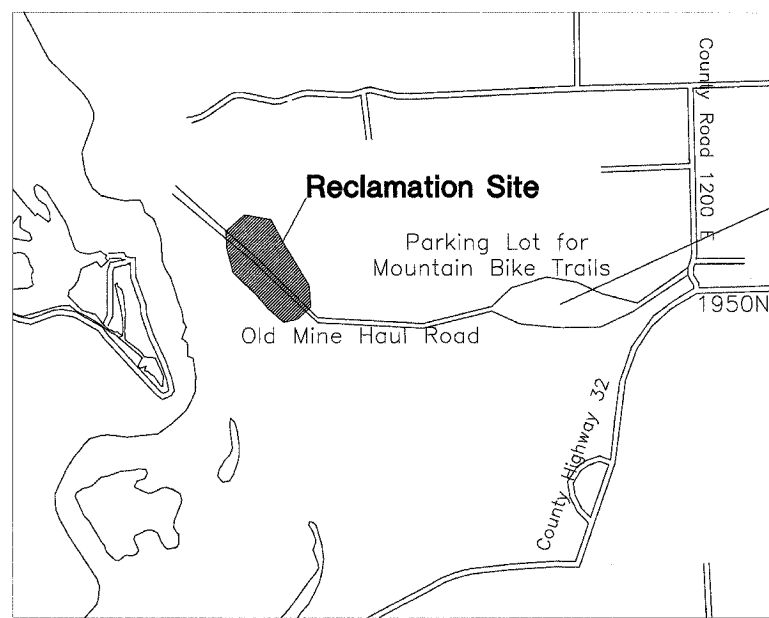




Pollywog Area

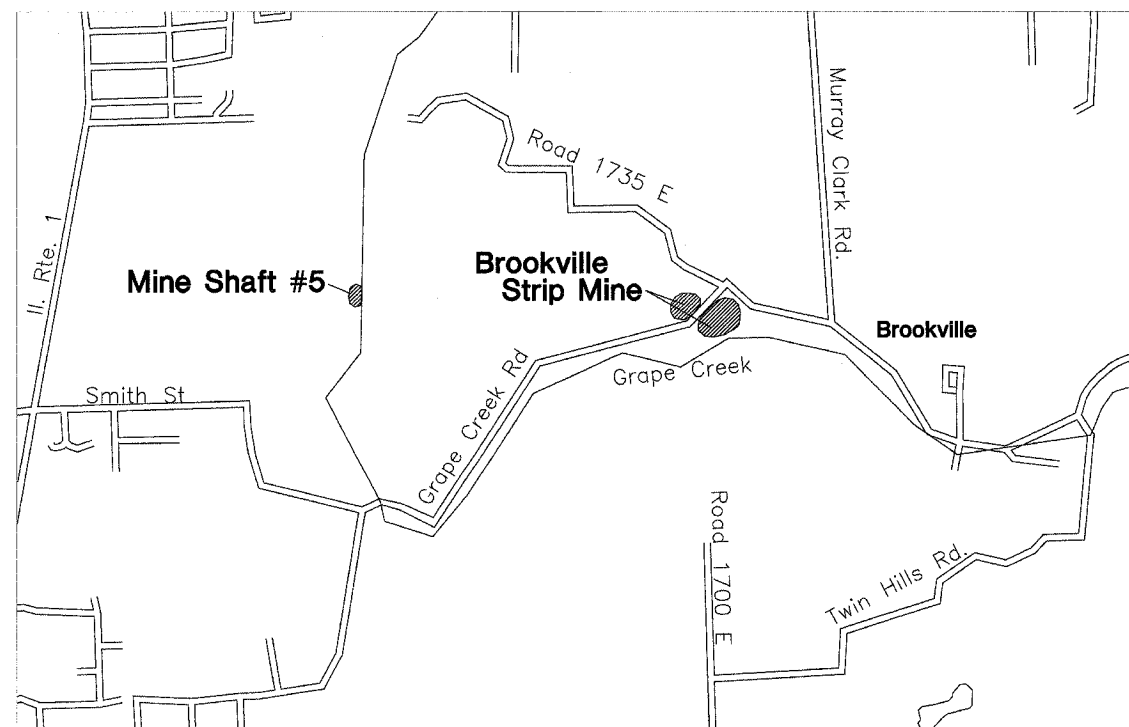


Location Map



Kickapoo Area

Location for Pre-Bid Meeting



Brookville Area

State of Illinois
Department of Natural Resources

Vermilion County Mine Group
Reclamation Project
AML-GVeE-0507
Vermilion County

Drawn By: T.M. Date: 6/28/06
Checked By:

Location Maps
Sheet
2 of 19

Summary of Quantities								
#	Item	Section	Quantities				Unit	Rates/Remarks
			Kickapoo State Park	Woodard Shafts	Brookville Area Shaft #5	Brookville Strip Mine		
1	Special Clearing	201	0.55	0.15	0.15	0.15	1	L.S.
2	Earth Excavation	202	6612	-	1051	76	7739	C.Y. Compaction required IDOT 205
3	Furnished Excavation	204	-	-	-	2430	2430	C.Y. Compaction required IDOT 205
4	Granular Embankment, Special	206	-	-	-	443	443	Ton
5	Porous Granular Backfill	IDOT 209	96	-	-	-	96	C.Y. CA-6 Material
6	Special Excavation	214	-	618	309	-	927	C.Y.
7	CA-6 Fill Material	216	-	495	-	-	495	Ton
8	Seeding, Class 6, Conservation Mix	IDOT 250	3.4	0.4	0.8	1.3	5.9	Acre
9	Nitrogen Fertilizer Nutrient	IDOT 250	408	48	96	156	708	Pound 120 pounds/acre
10	Phosphorous Fertilizer Nutrient	IDOT 250	340	40	80	130	590	Pound 100 pounds/acre
11	Potassium Fertilizer Nutrient	IDOT 250	850	100	200	325	1475	Pound 250 pounds/acre
12	Agricultural Ground Limestone	IDOT 250	34	4	8	13	59	Ton 10 tons/acre
13	Mulch, Method 2, Procedure 2	IDOT 251	2.2	0.4	0.8	1.0	4.4	Acre 2 tons/acre
14	Stone Dumped Riprap, A3	IDOT 281	-	-	-	673	673	Ton
15	Stone Riprap, A3	IDOT 281	143	-	-	-	143	S.Y.
16	Special Excelsior Blanket	286	6045	-	-	1600	7645	S.Y.
17	Aggregate Surface Course, Type A	IDOT 402	350	-	-	-	350	Ton
18	Pipe Culverts, 36" Dia. RCCP	IDOT 542	268	-	-	-	268	Feet
19	Pipe Culverts, 15" Dia. RCCP	IDOT 542	10	-	-	-	10	Feet
20	Precast Reinforced Concrete Flared End Sections, 36" Dia.	IDOT 542	2	-	-	-	2	Each IDOT Standard 542101
21	Precast Reinforced Concrete Flared End Sections, 15" Dia.	IDOT 542	2	-	-	-	2	Each IDOT Standard 542101
22	Grating for Concrete Flared End Sections, 36" Dia.	IDOT 542	1	-	-	-	1	Each IDOT Standard 542311
23	Mine Opening Marker	686	-	2	1	-	3	Each
24	Mobilization (Max. 6% of Bid)	671	-	-	-	-	1	L.S.

GENERAL NOTES

Unless otherwise noted on the plans, all disturbed areas within the construction limits will be amended with agricultural ground limestone, fertilizer nutrients, seeded and mulched at the required rates specified in the plans.

The contractor is responsible for visiting the site and familiarizing himself with the existing conditions and the proposed reclamation work prior to submitting a bid.

The contractor shall provide and pay for all field engineering services to execute the project as specified in the Field Engineering section of the Special Provisions.

The contractor is responsible for locating and protecting all existing utility lines pertaining to the work.

Unless noted on the plans, all onsite access roads may be used for construction and must be maintained during construction and restored to original or better condition at the completion of work by the contractor. Access roads to the site as designated in the plans are to be maintained to the satisfaction of the engineer.

The construction limits will be staked by the contractor prior to construction. The contractor is responsible for the repair and or restitution at his own expense for all damages done to any area outside the construction limits.

Application rates specified in the plans are shown in the Summary of Quantities-Rates/Remarks column.

CONSTRUCTION NOTES

BURIAL/REMOVAL OF MATERIAL-Concrete and masonry debris designated for burial by the engineer shall be buried at least three feet below proposed final grade. Onsite organic debris and trash shall be disposed of in an engineer approved offsite landfill in accordance with Sections 201 and 501 of the Special Provisions.

TREE REMOVAL-Trees removed shall be disposed of onsite per Section 201 of the Special Provisions.

ACID WATER TREATMENT-If acid mine drainage treatment is determined necessary by the engineer, and not otherwise specified in the plans, any water treatment will be paid for in accordance with Article 109.04 of the Standard Specifications.

EROSION CONTROL-The contractor shall schedule his operations and take such precautions that may be necessary to prevent or minimize erosion. Failure to comply with this requirement shall cause the contractor to be fully responsible for repairing any eroded areas and cleaning up areas or drainage structures that have become silted in or damaged.

AGRICULTURAL GROUND LIMESTONE-Immediately prior to seed bed preparation, fertilizer nutrients and agricultural ground limestone shall be uniformly spread at the rates specified in the plans.

MULCHING-Within 24 hours from the time seeding has been performed, the seeded area shall be given a covering of mulch at the rates specified in the plans. The mulch is to be anchored into the soil in accordance with the requirements for method 2, procedure 2 of Article 251.03 of the Standard Specifications. If Excelsior or Special Excelsior Blanket is to be used, the blanket shall be placed the same day that the areas are seeded.

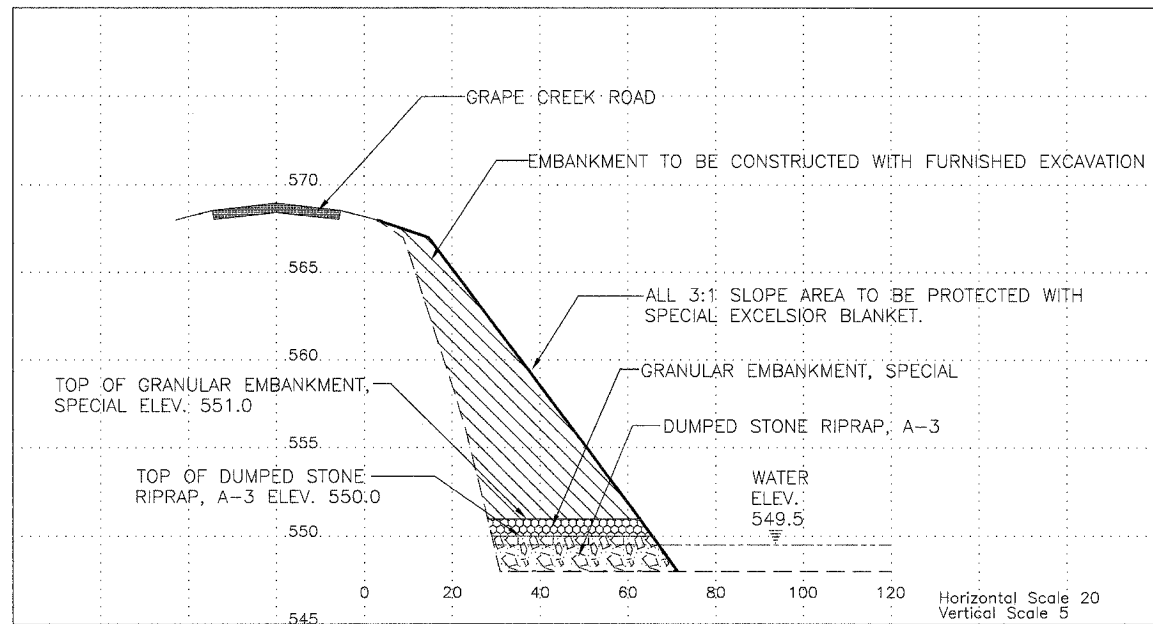
MINE REFUSE TREATMENT -After mine refuse has been graded to the subgrade shown in the plans, agricultural ground limestone shall be uniformly spread at the rate specified in the plans. A 3 inch layer of soil shall then be spread over the mine refuse treatment area and blended to a depth of 6 inches with an industrial offset disk approved by the engineer. Treated areas shall then be covered with 21 inches of soil.

State of Illinois
Department of Natural Resources

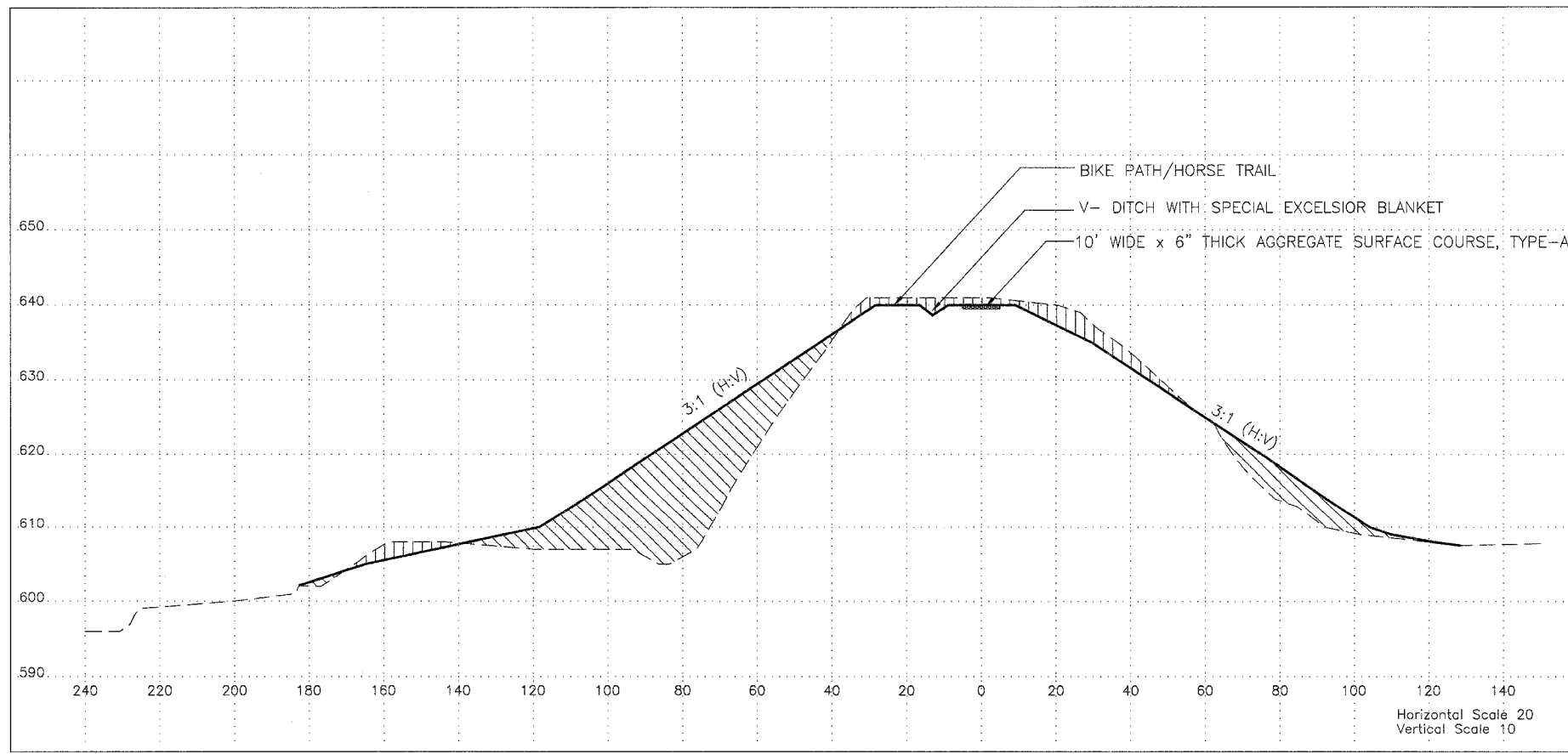
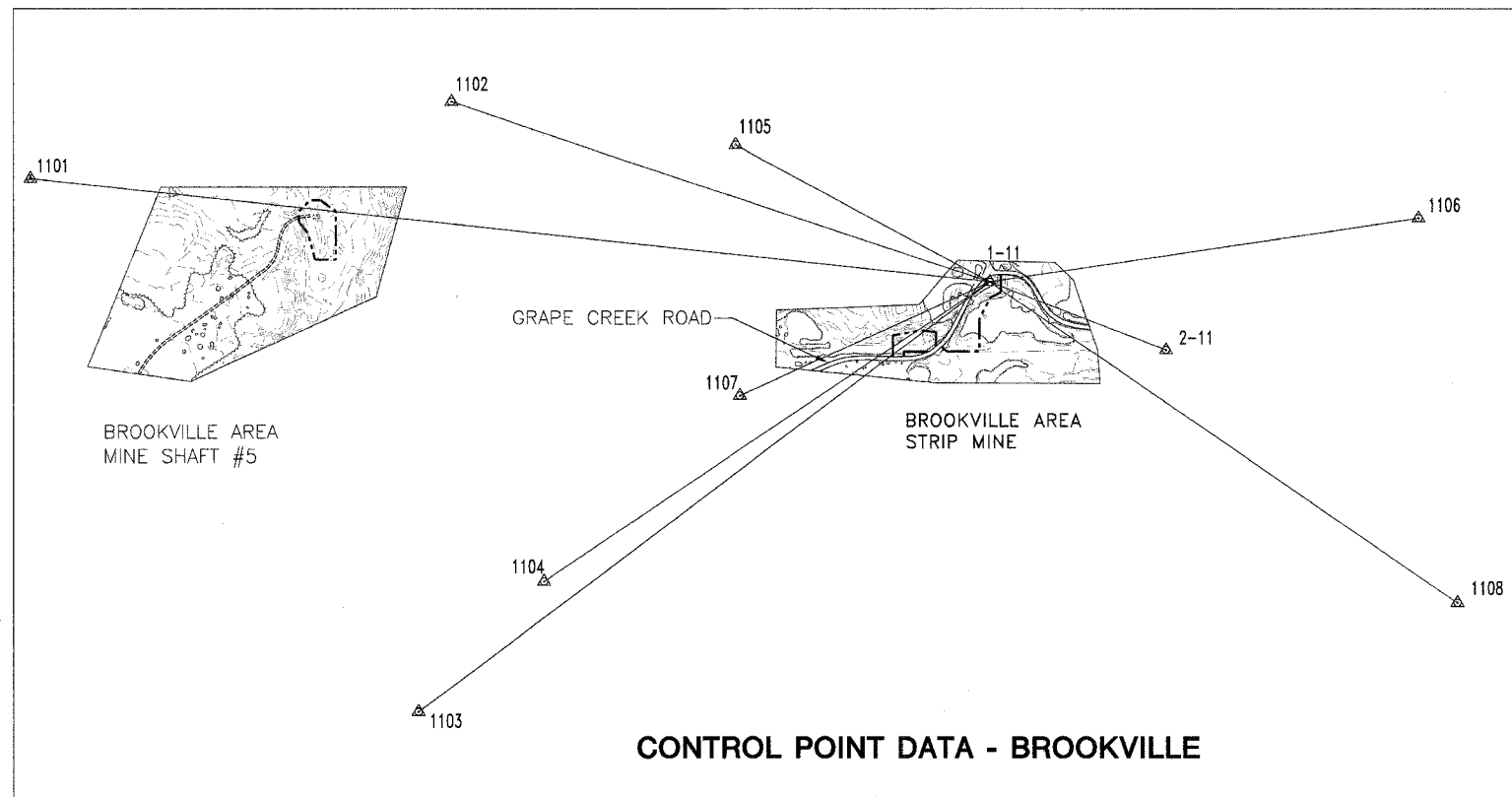
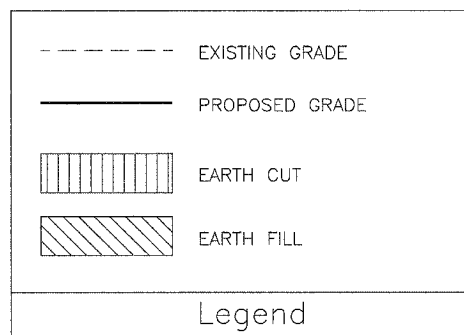
Vermilion County Mine Group
Reclamation Project
AML-GVeE-0507
Vermilion County

Drawn By: _____ Date: 8/23/2006
Checked By: _____
T.M., T.N.

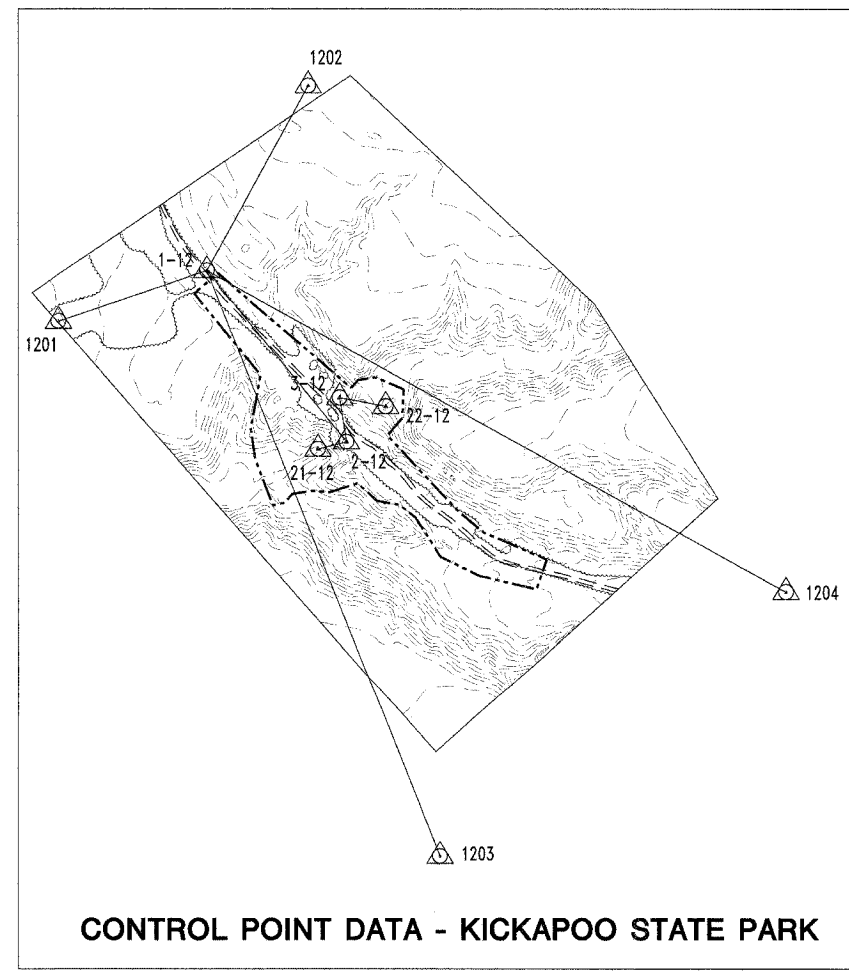
Summary of Quantities/
General Notes
Sheet
3 of 19

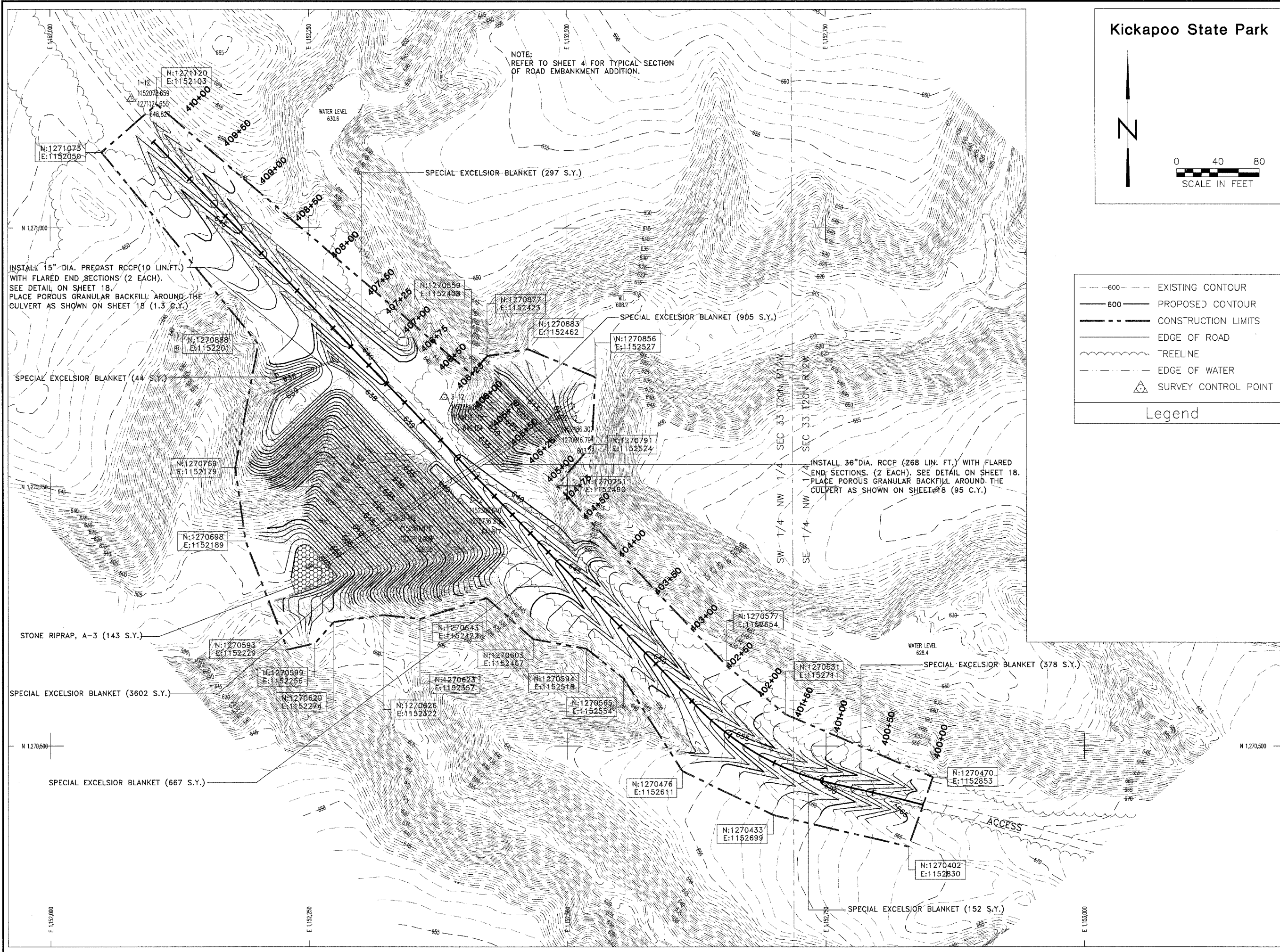


TYPICAL SECTION BROOKVILLE AREA STRIP MINE



TYPICAL SECTION KICKAPOO STATE PARK





Kickapoo State Park

N

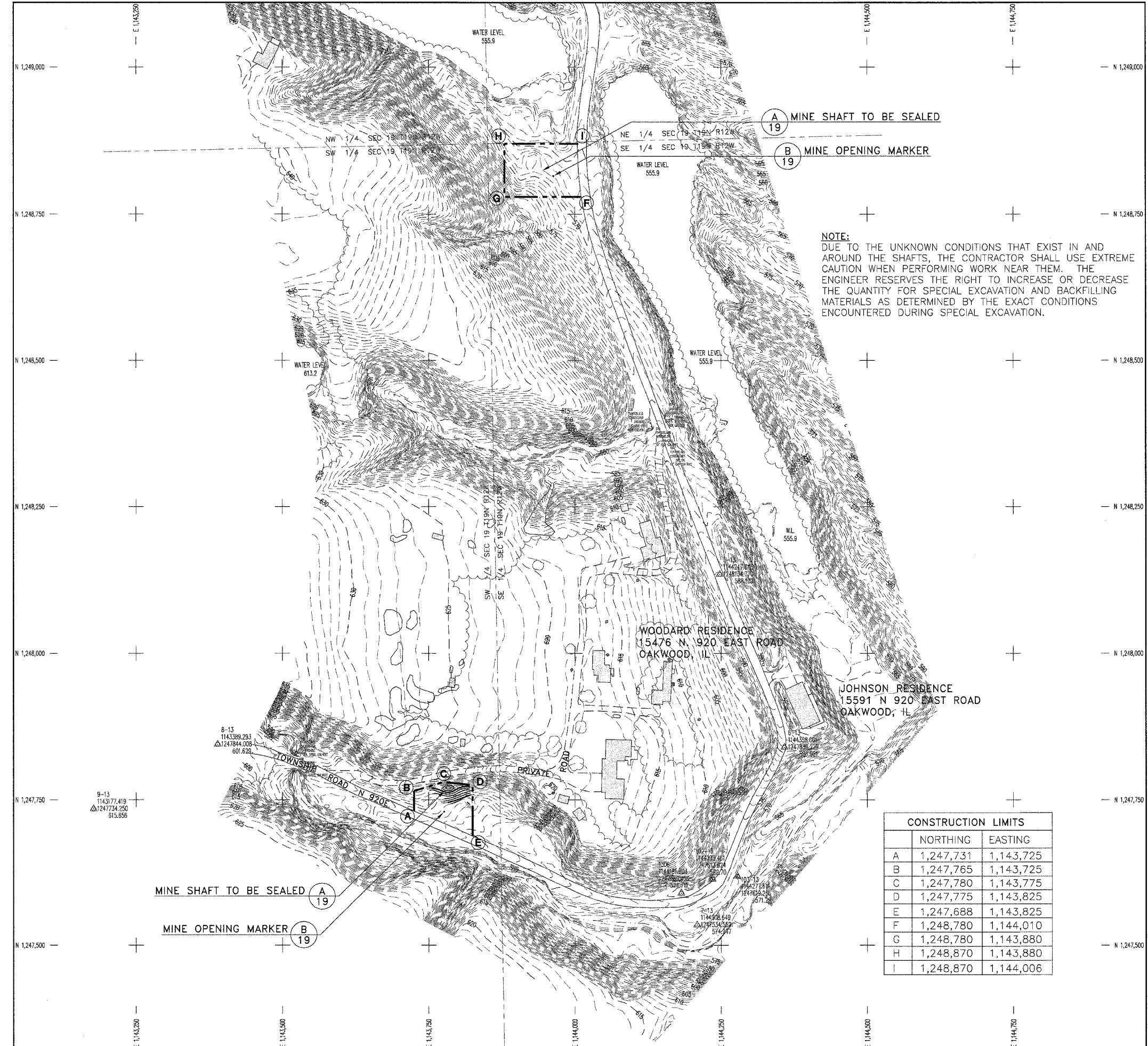
0 40 80
SCALE IN FEET

State of Illinois
Department of Natural Resources

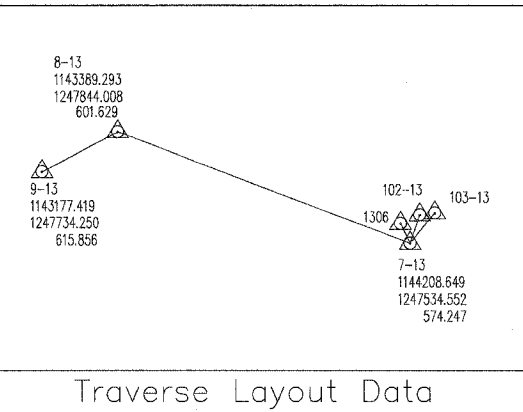
Vermilion County Mine Group
Reclamation Project
AML-GVeE-0507
Vermilion County

Drawn By: V.P., M-L-F
Date: 3/2/2006
Checked By:

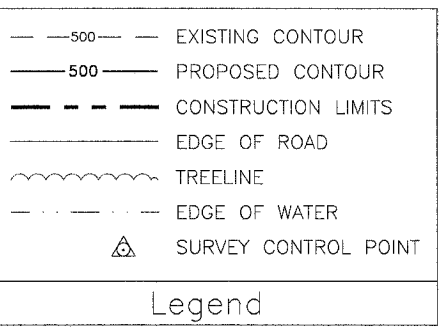
Existing and Proposed
Conditions
Sheet
5 of 19



NOTE:
 DUE TO THE UNKNOWN CONDITIONS THAT EXIST IN AND AROUND THE SHAFTS, THE CONTRACTOR SHALL USE EXTREME CAUTION WHEN PERFORMING WORK NEAR THEM. THE ENGINEER RESERVES THE RIGHT TO INCREASE OR DECREASE THE QUANTITY FOR SPECIAL EXCAVATION AND BACKFILLING MATERIALS AS DETERMINED BY THE EXACT CONDITIONS ENCOUNTERED DURING SPECIAL EXCAVATION.

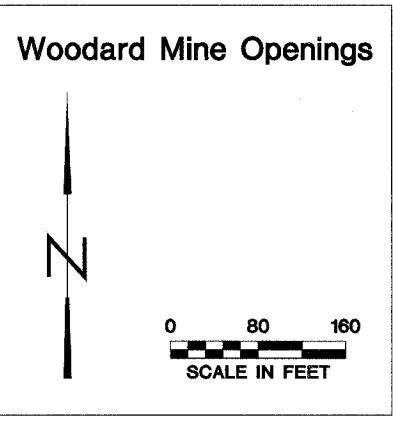


Traverse Layout Data

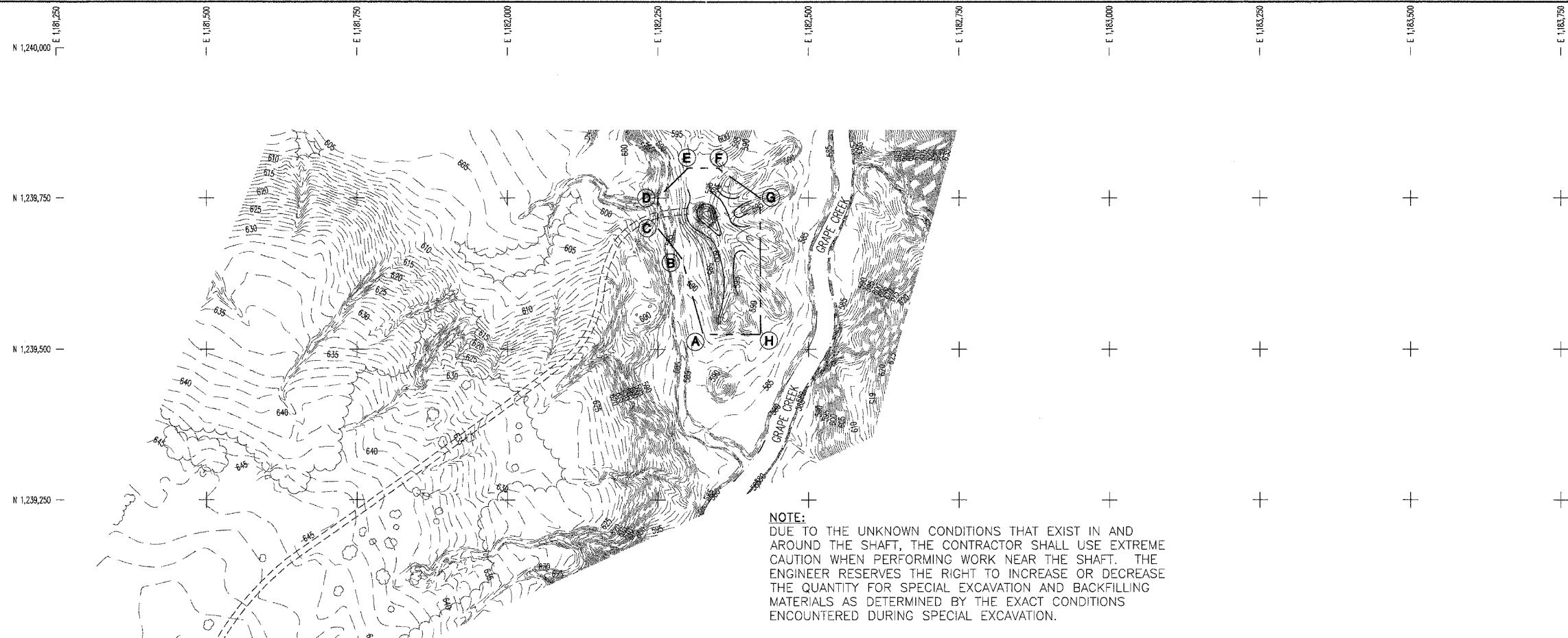


Legend

	NORTHING	EASTING
A	1,247,731	1,143,725
B	1,247,765	1,143,725
C	1,247,780	1,143,775
D	1,247,775	1,143,825
E	1,247,688	1,143,825
F	1,248,780	1,144,010
G	1,248,780	1,143,880
H	1,248,870	1,143,880
I	1,248,870	1,144,006



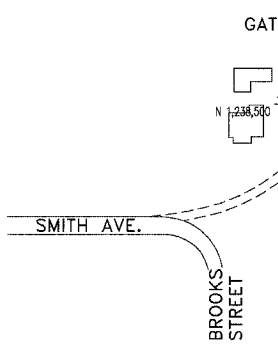
1101
 1181007.861
 1239902.163
 646.702



NOTE:
 DUE TO THE UNKNOWN CONDITIONS THAT EXIST IN AND AROUND THE SHAFT, THE CONTRACTOR SHALL USE EXTREME CAUTION WHEN PERFORMING WORK NEAR THE SHAFT. THE ENGINEER RESERVES THE RIGHT TO INCREASE OR DECREASE THE QUANTITY FOR SPECIAL EXCAVATION AND BACKFILLING MATERIALS AS DETERMINED BY THE EXACT CONDITIONS ENCOUNTERED DURING SPECIAL EXCAVATION.

CONSTRUCTION LIMITS		
	NORTHING	EASTING
A	1,239,525	1,182,325
B	1,239,650	1,182,290
C	1,239,700	1,182,250
D	1,239,750	1,182,250
E	1,239,800	1,182,300
F	1,239,800	1,182,350
G	1,239,750	1,182,420
H	1,239,525	1,182,420

NE 1/4 SEC 32 T19N R11W
 SE 1/4 SEC 32 T19N R11W

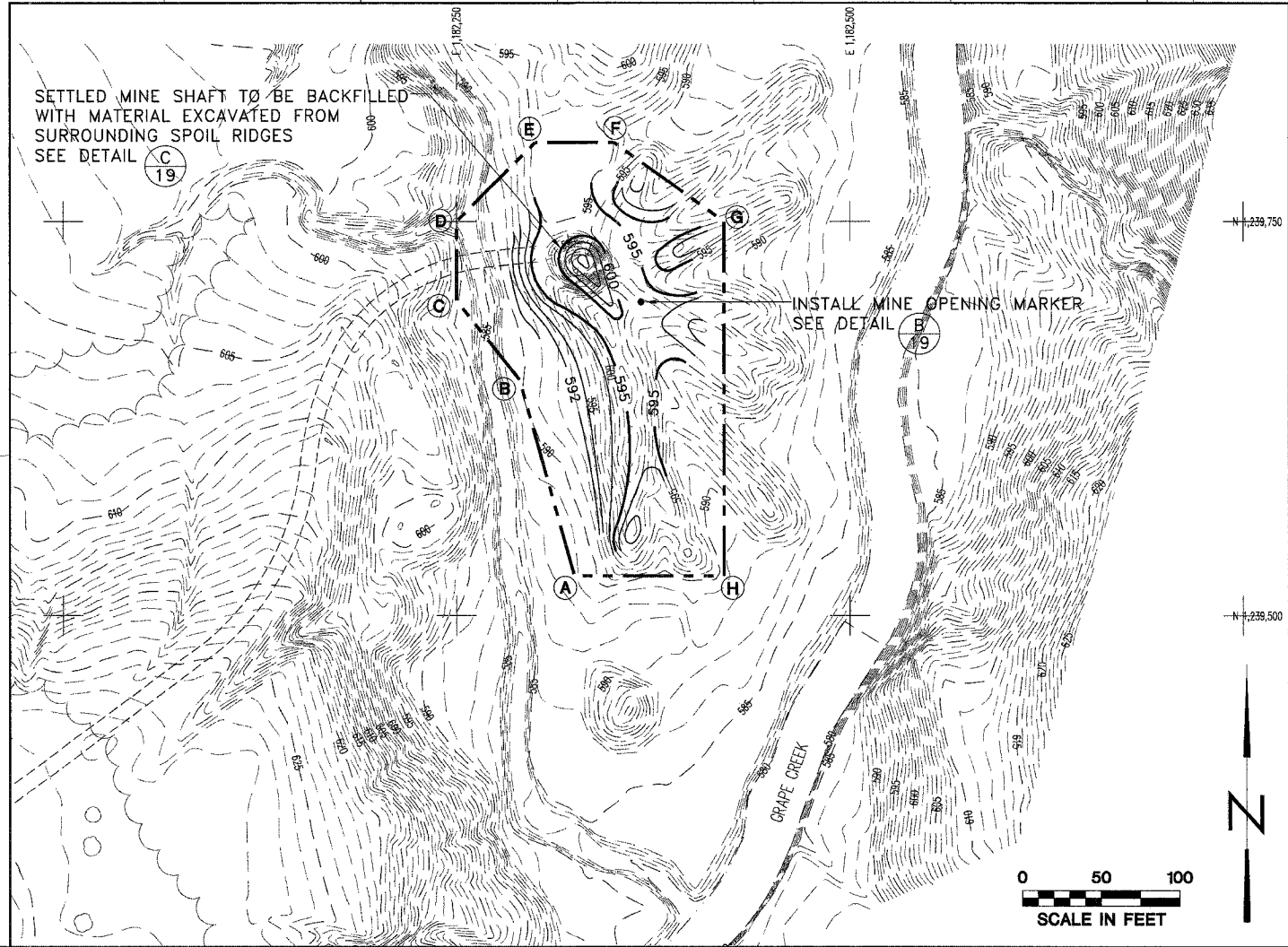


	EXISTING CONTOUR
	PROPOSED CONTOUR
	CONSTRUCTION LIMITS
	EDGE OF ROAD
	TREELINE
	EDGE OF WATER
	SURVEY CONTROL POINT

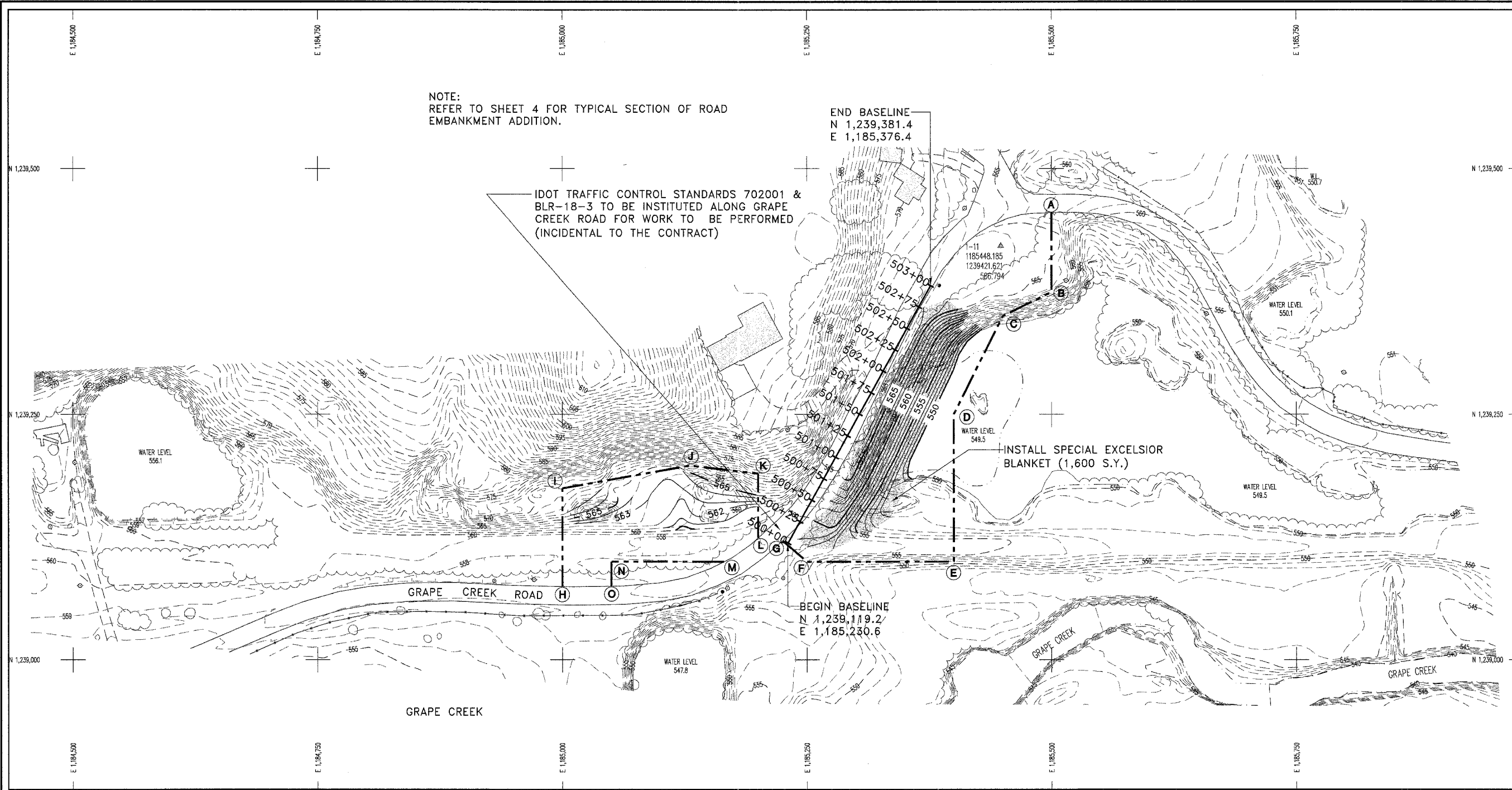
Legend

**Brookville Area
 Mine Shaft #5**

SCALE IN FEET



Drawn By: M-LF
 Checked By: _____
 Date: B/23/2006



NOTE:
REFER TO SHEET 4 FOR TYPICAL SECTION OF ROAD
EMBANKMENT ADDITION.

IDOT TRAFFIC CONTROL STANDARDS 702001 &
BLR-18-3 TO BE INSTITUTED ALONG GRAPE
CREEK ROAD FOR WORK TO BE PERFORMED
(INCIDENTAL TO THE CONTRACT)

END BASELINE
N 1,239,381.4
E 1,185,376.4

BEGIN BASELINE
N 1,239,119.2
E 1,185,230.6

CONSTRUCTION LIMITS		
	NORTHING	EASTING
A	1,239,455	1,185,500
B	1,239,375	1,185,500
C	1,239,350	1,185,450
D	1,239,250	1,185,400
E	1,239,100	1,185,400
F	1,239,100	1,185,250
G	1,239,122	1,185,225
H	1,239,075	1,185,500
I	1,239,175	1,185,500
J	1,239,198	1,185,130
K	1,239,190	1,185,200
L	1,239,124	1,185,200
M	1,239,100	1,185,165
N	1,239,100	1,185,050
O	1,239,075	1,185,050

Legend

- 500--- EXISTING CONTOUR
- 500— PROPOSED CONTOUR
- — — CONSTRUCTION LIMITS
- EDGE OF ROAD
- ~ TREELINE
- - - EDGE OF WATER
- △ SURVEY CONTROL POINT
- ▨ SPECIAL EXCELSIOR BLANKET

Brookville Area
Strip Mine

SCALE IN FEET

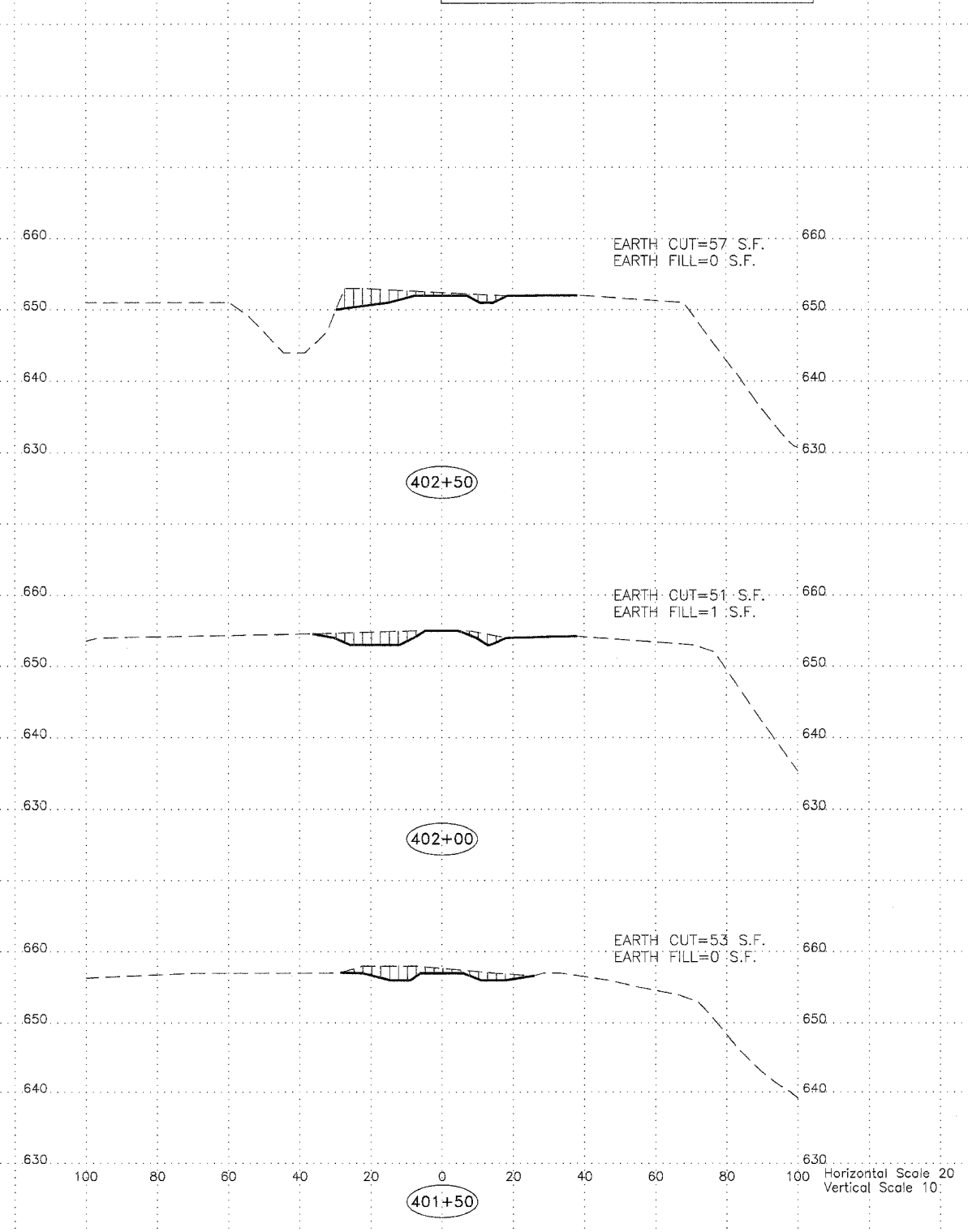
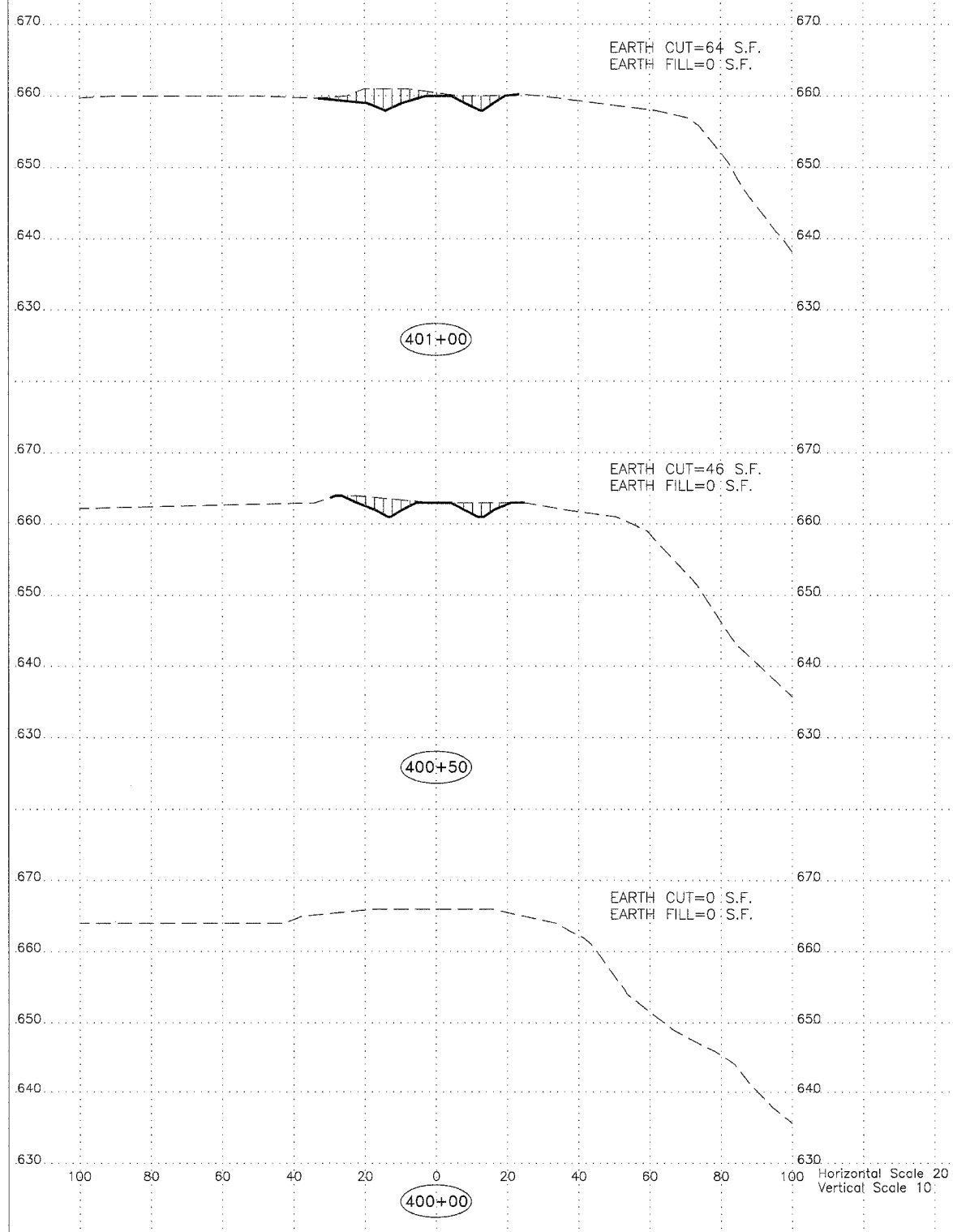
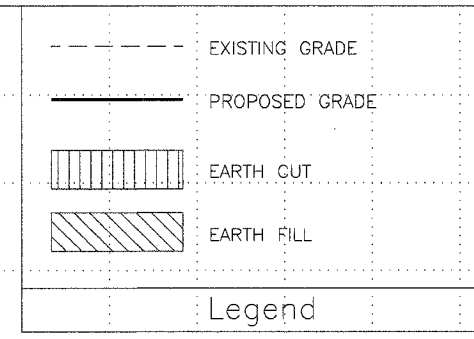
State of Illinois
Department of Natural Resources

Vermilion County Mine Group
Reclamation Project
AML-GVeE-0507
Vermilion County

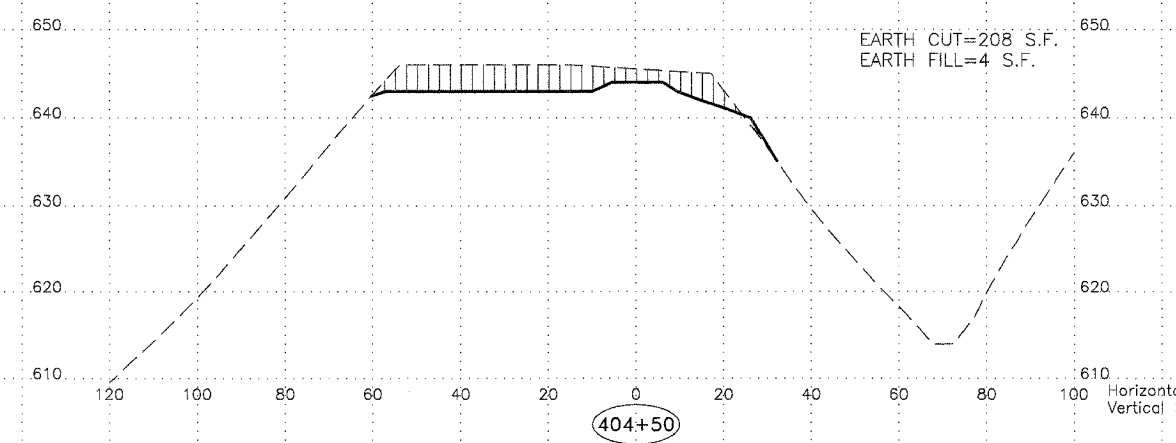
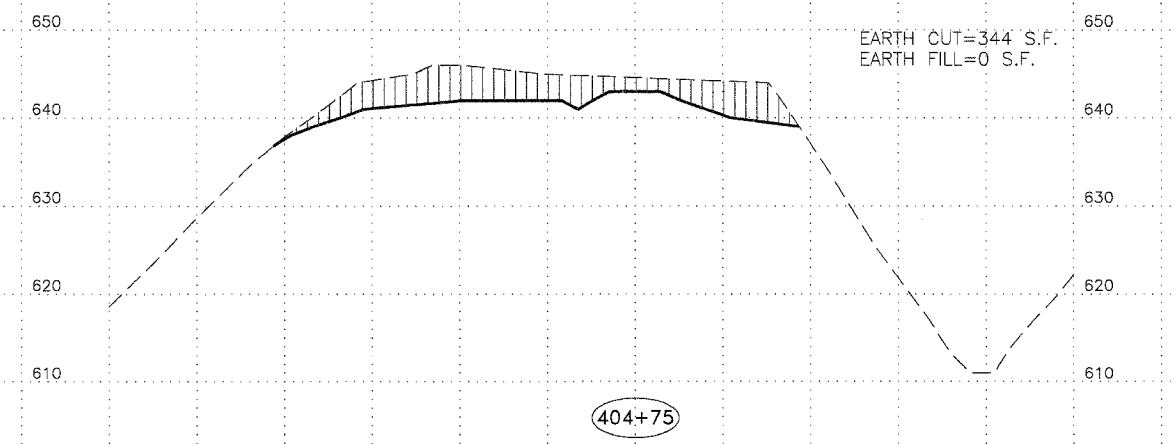
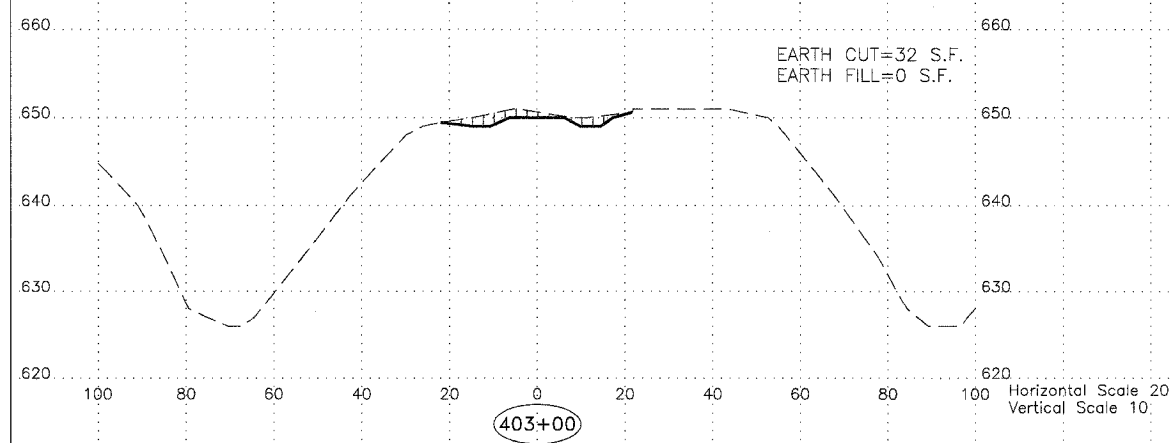
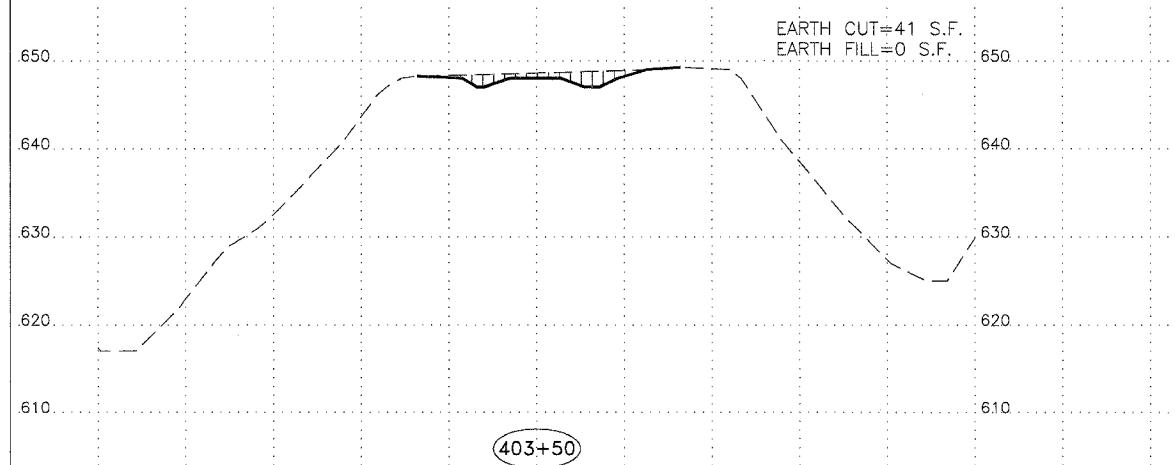
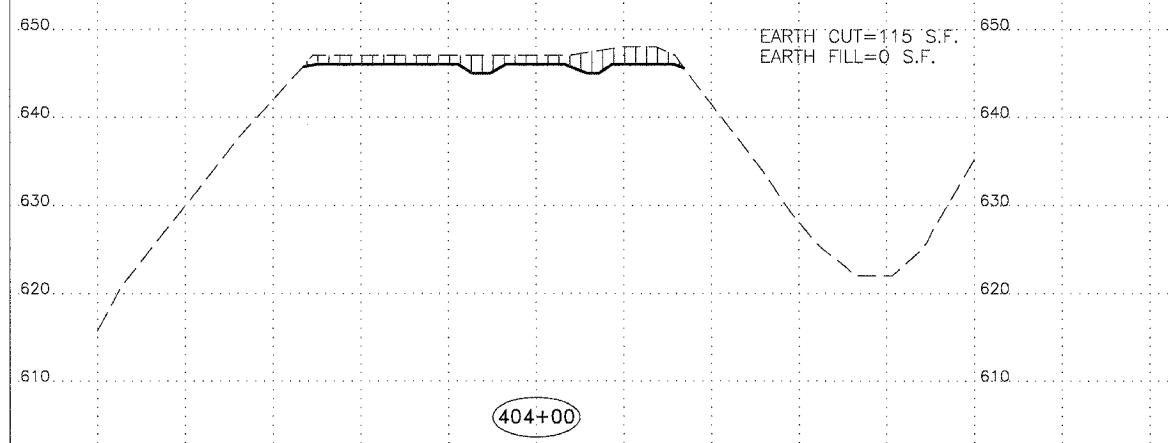
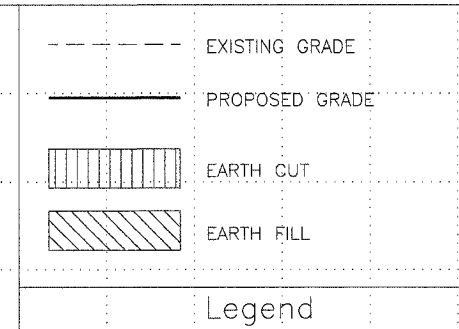
Drawn By: _____ Date: 8/16/2006
V.P., M-LF
Checked By: _____

Existing & Proposed
Conditions
Sheet
8 of 19

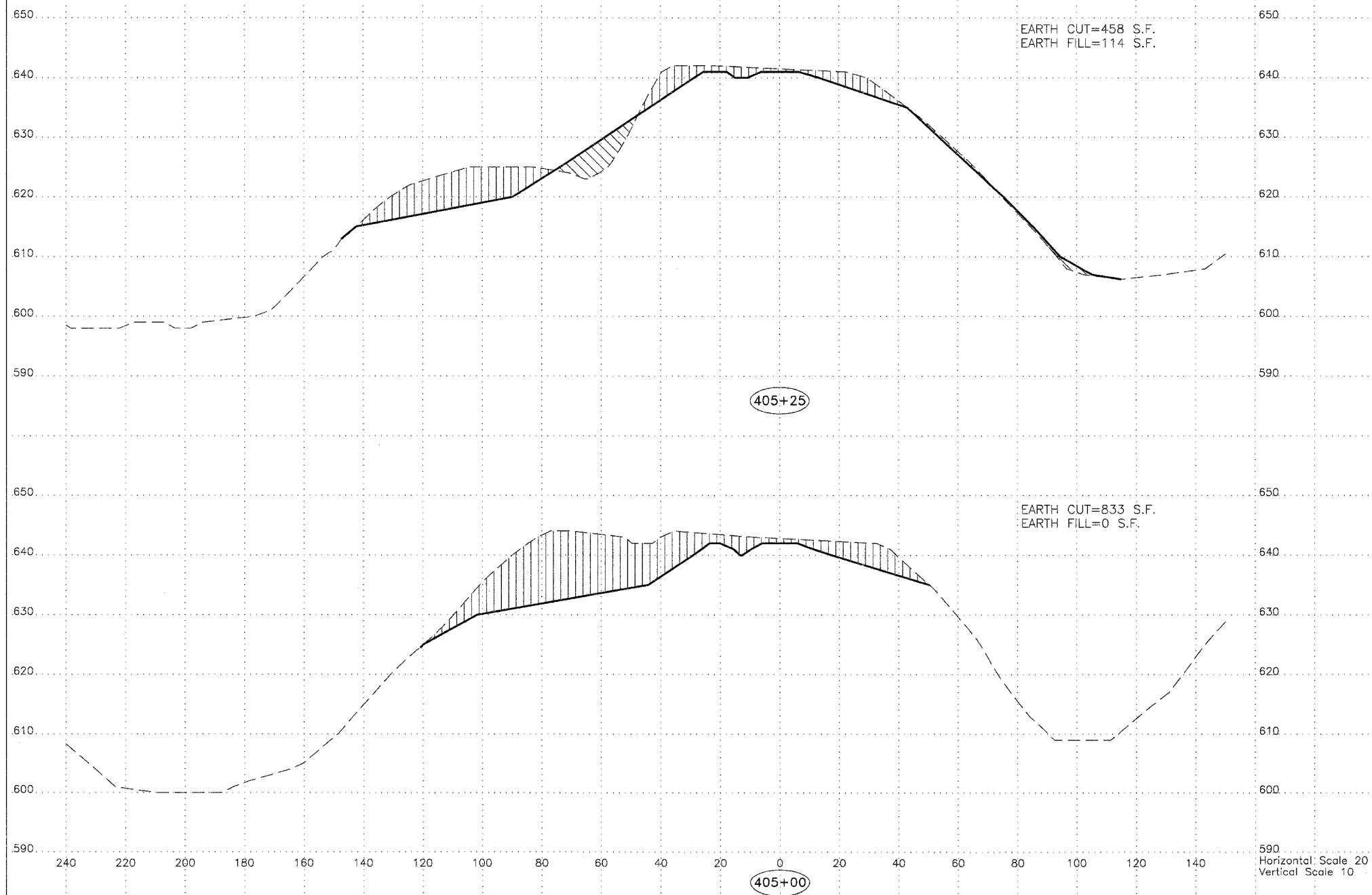
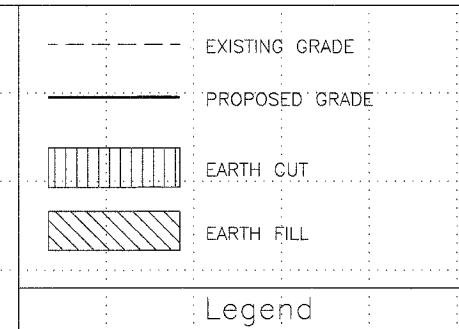
Vermilion County Mine Group
 Reclamation Project
 AML-GVeE-0507
 Vermilion County



Vermilion County Mine Group
 Reclamation Project
 AML-GVeE-0507
 Vermilion County

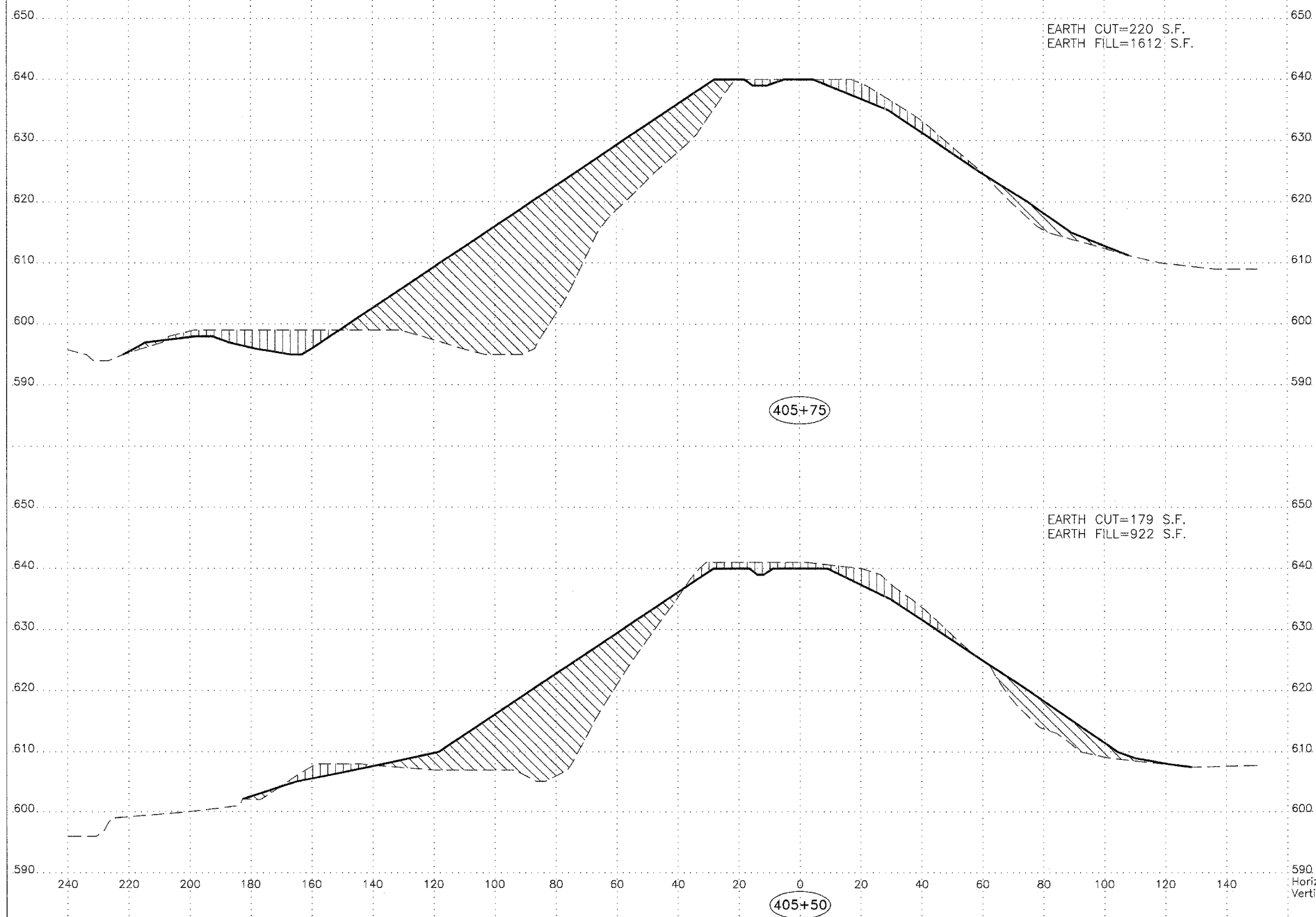
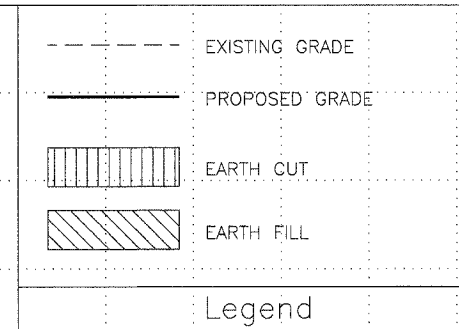


Vermilion County Mine Group
 Reclamation Project
 AML-GVeE-0507
 Vermilion County

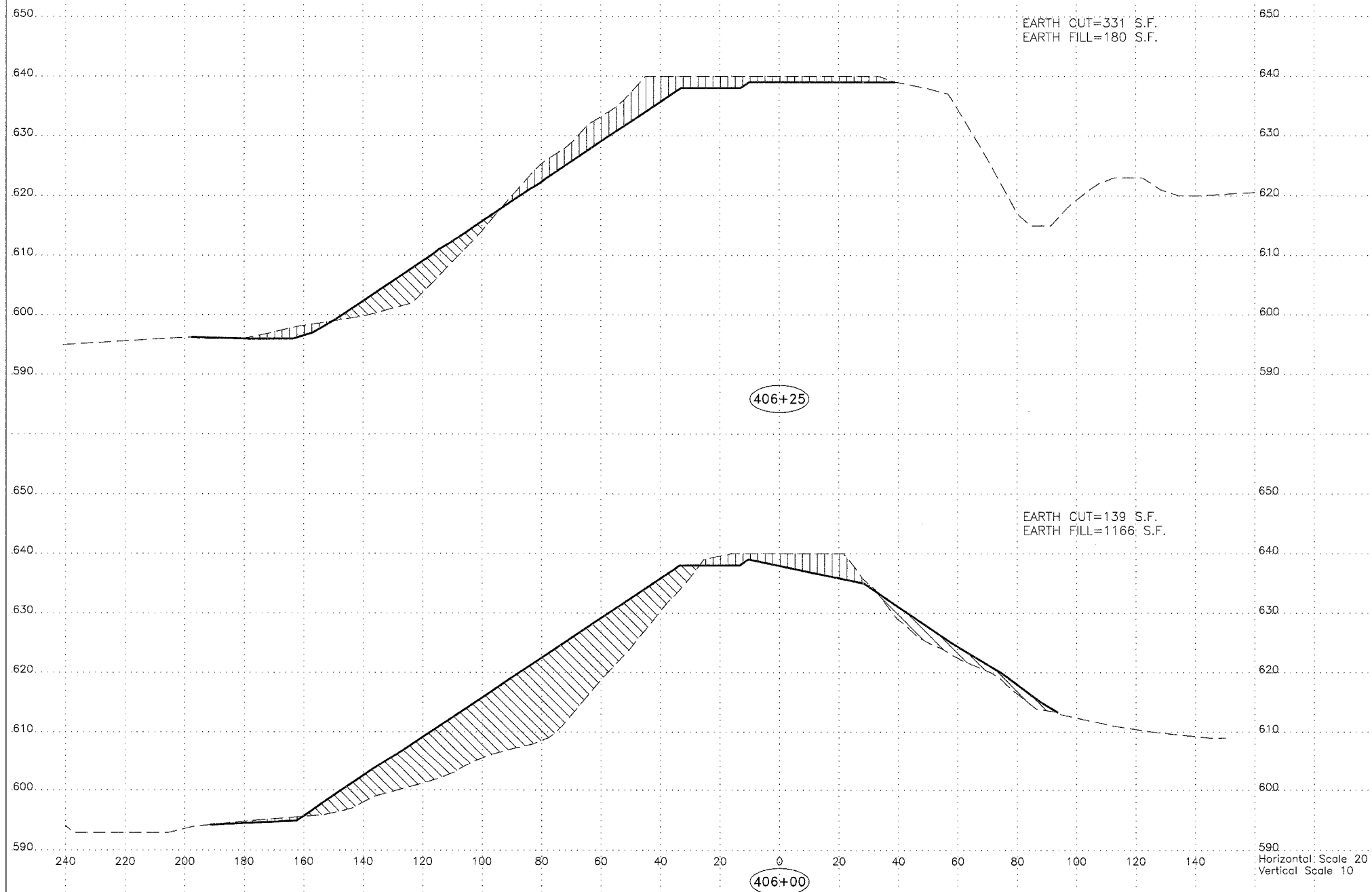
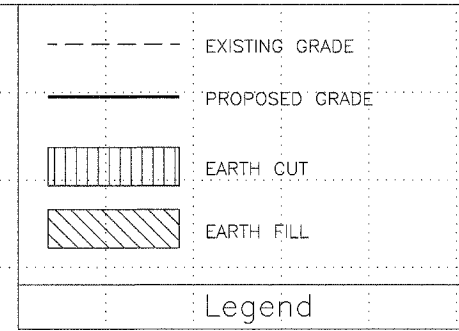


Horizontal Scale 20
 Vertical Scale 10

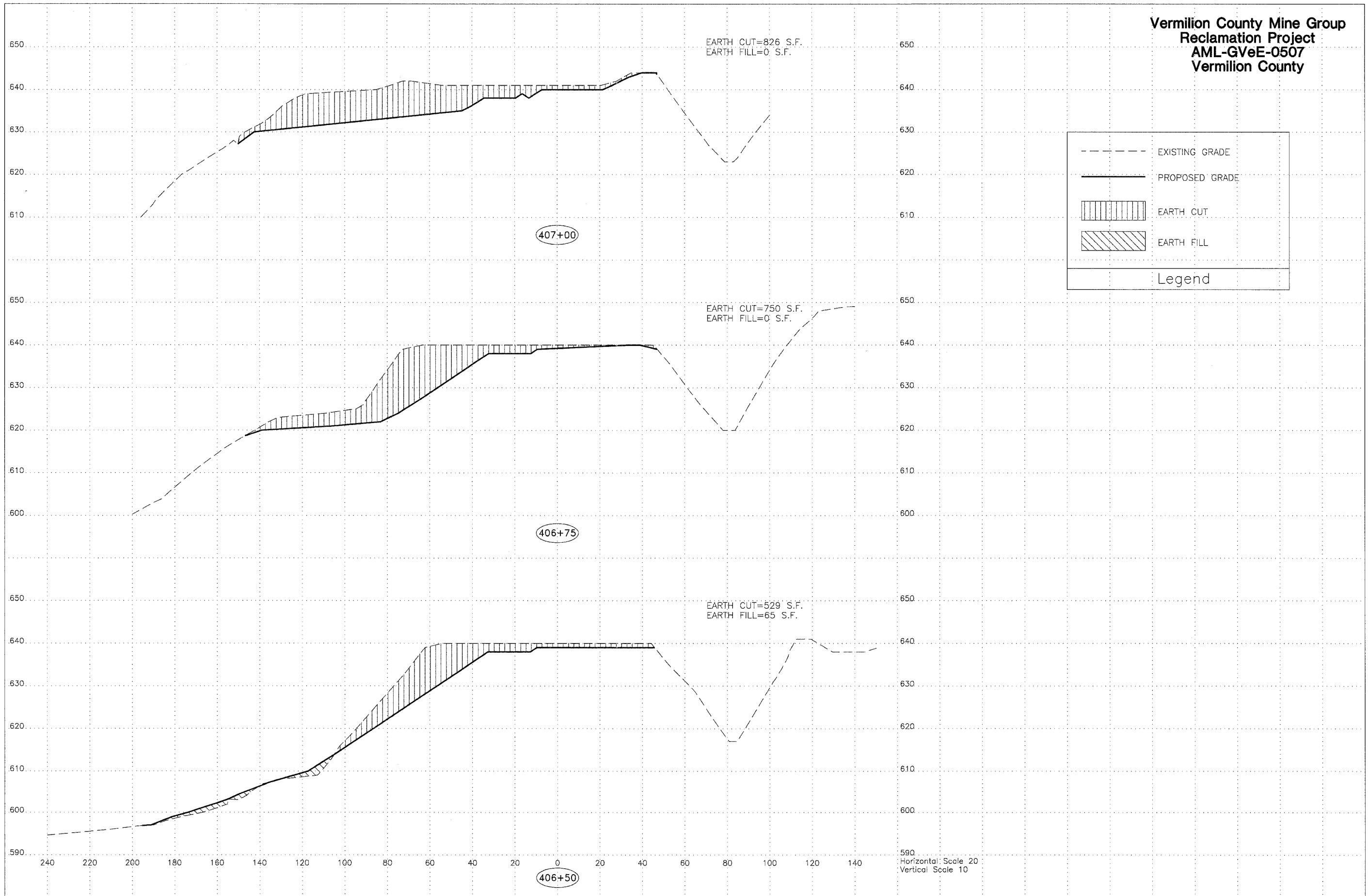
Vermilion County Mine Group
 Reclamation Project
 AML-GV_eE-0507
 Vermilion County



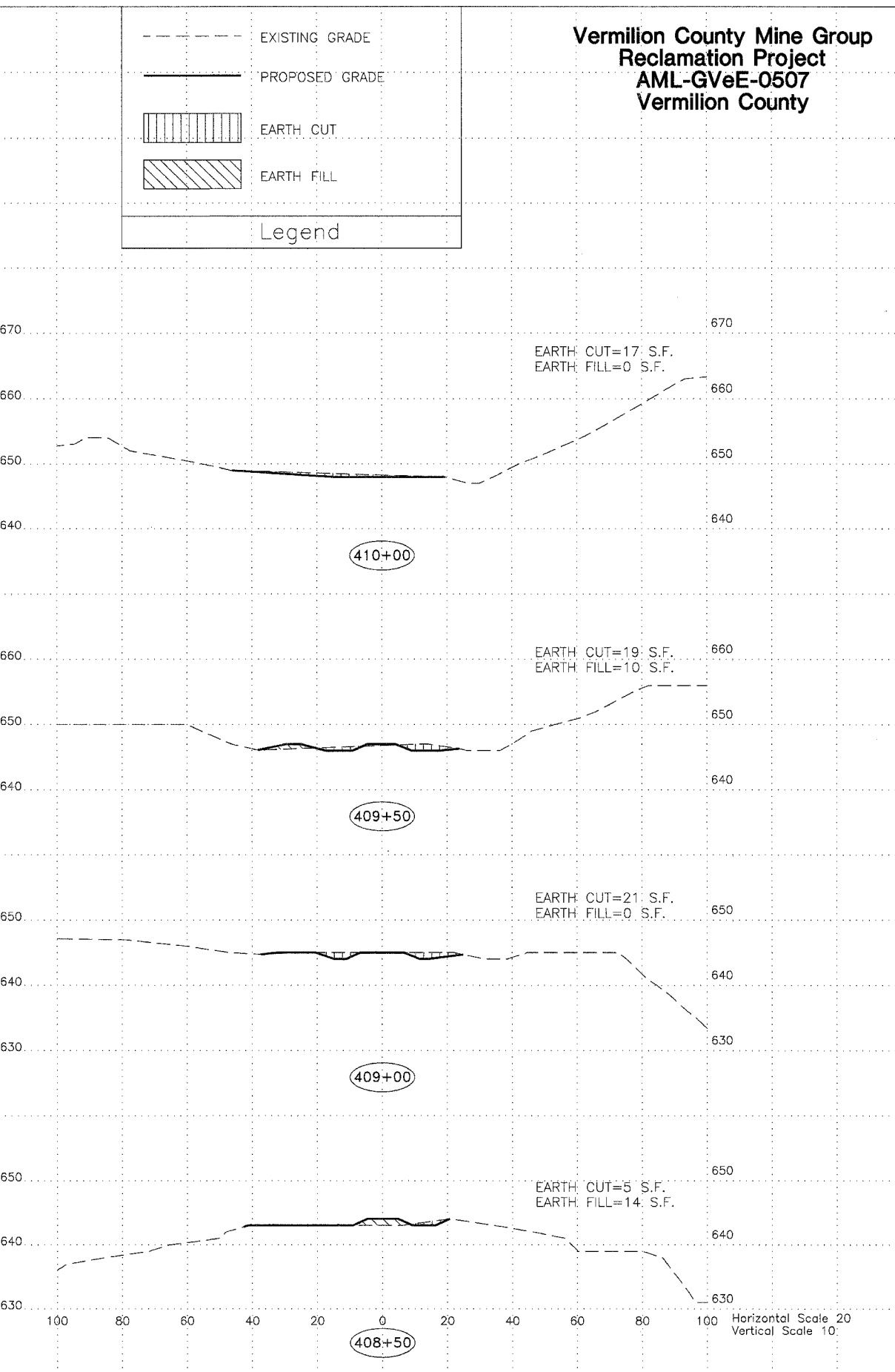
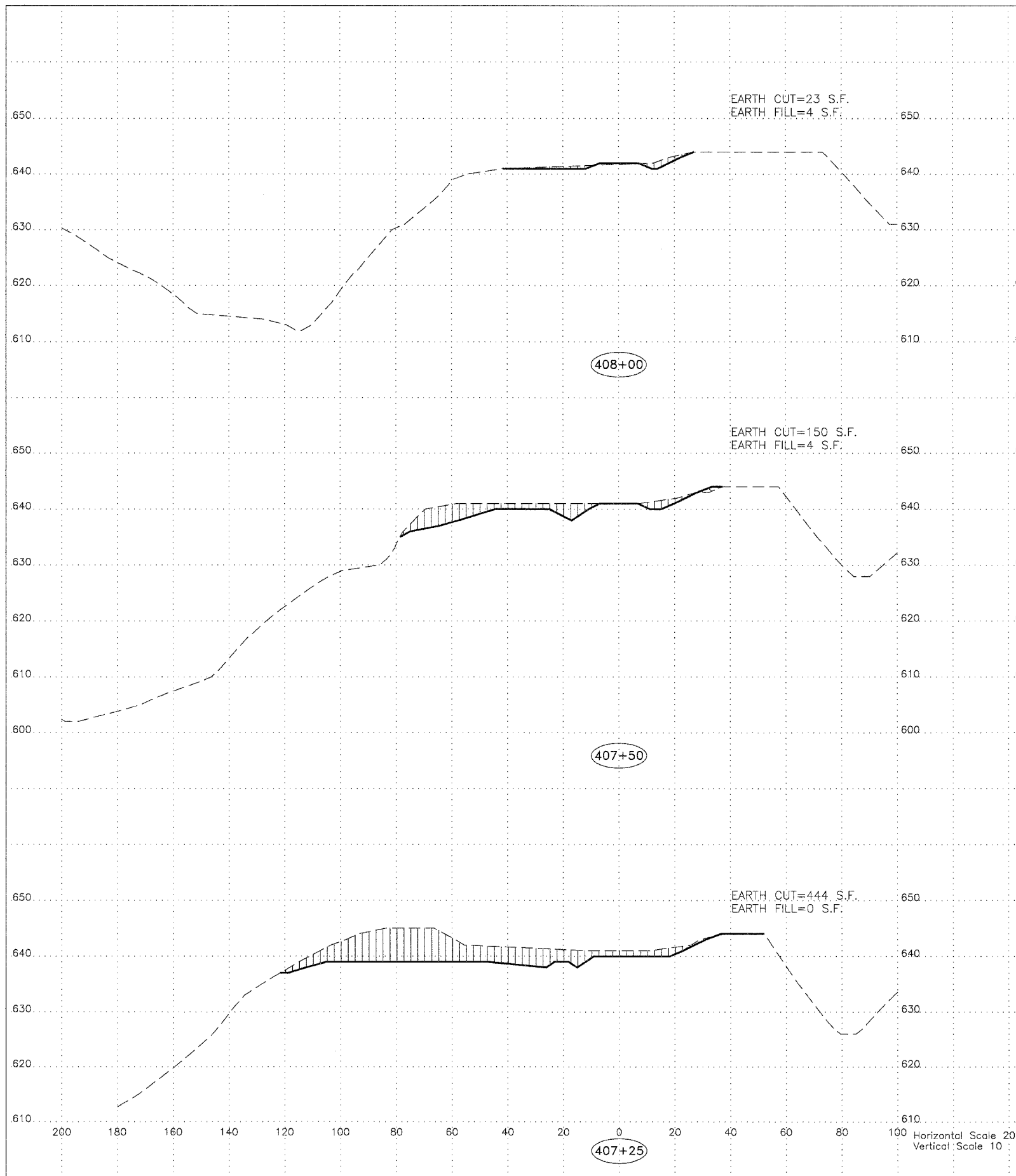
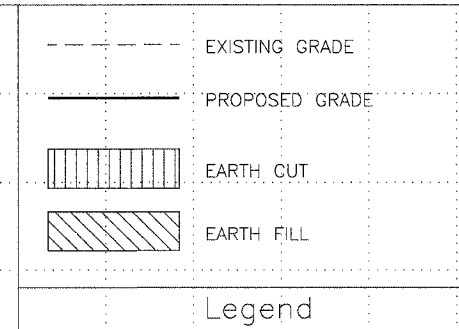
Vermilion County Mine Group
Reclamation Project
AML-GVøE-0507
Vermilion County

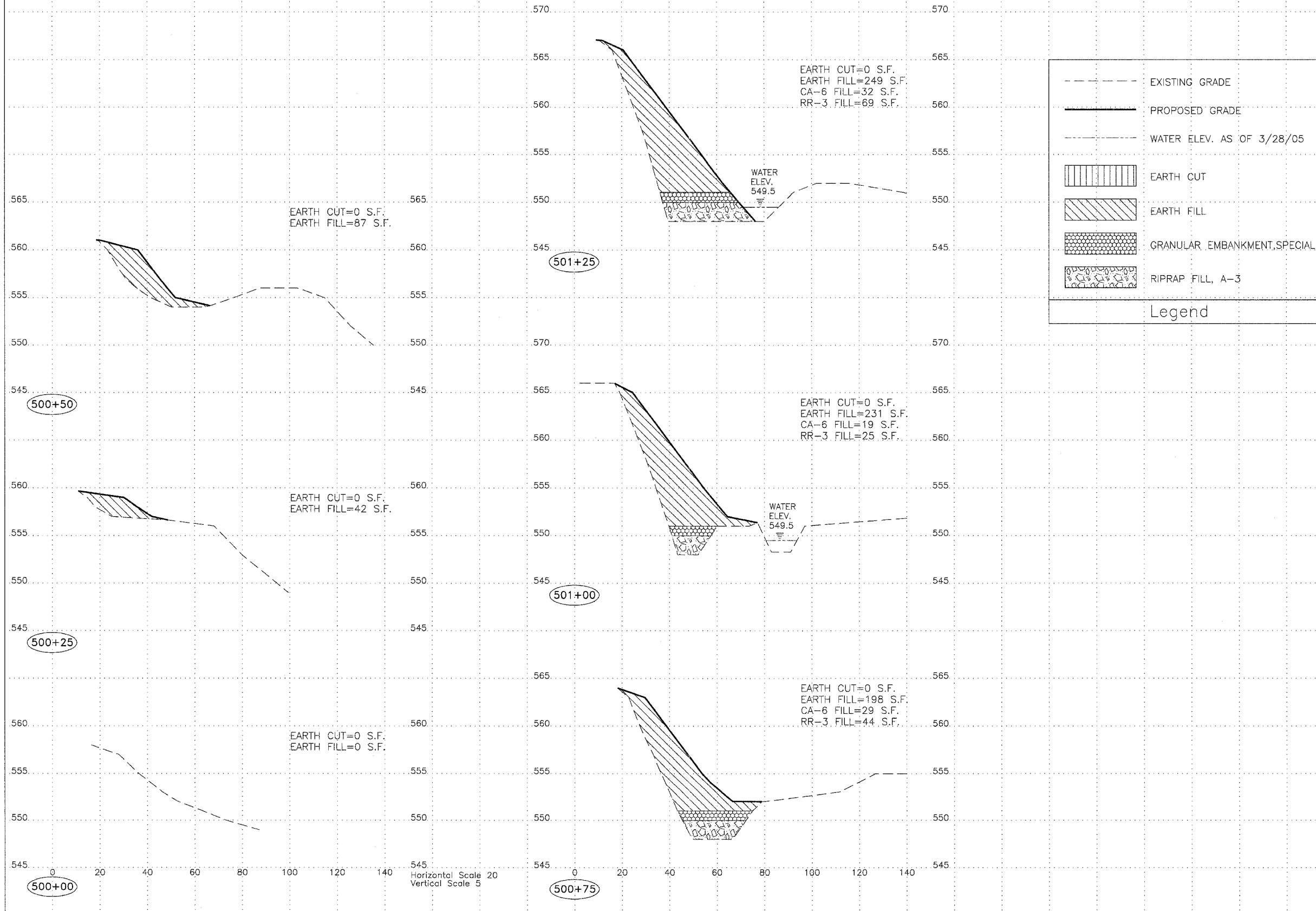


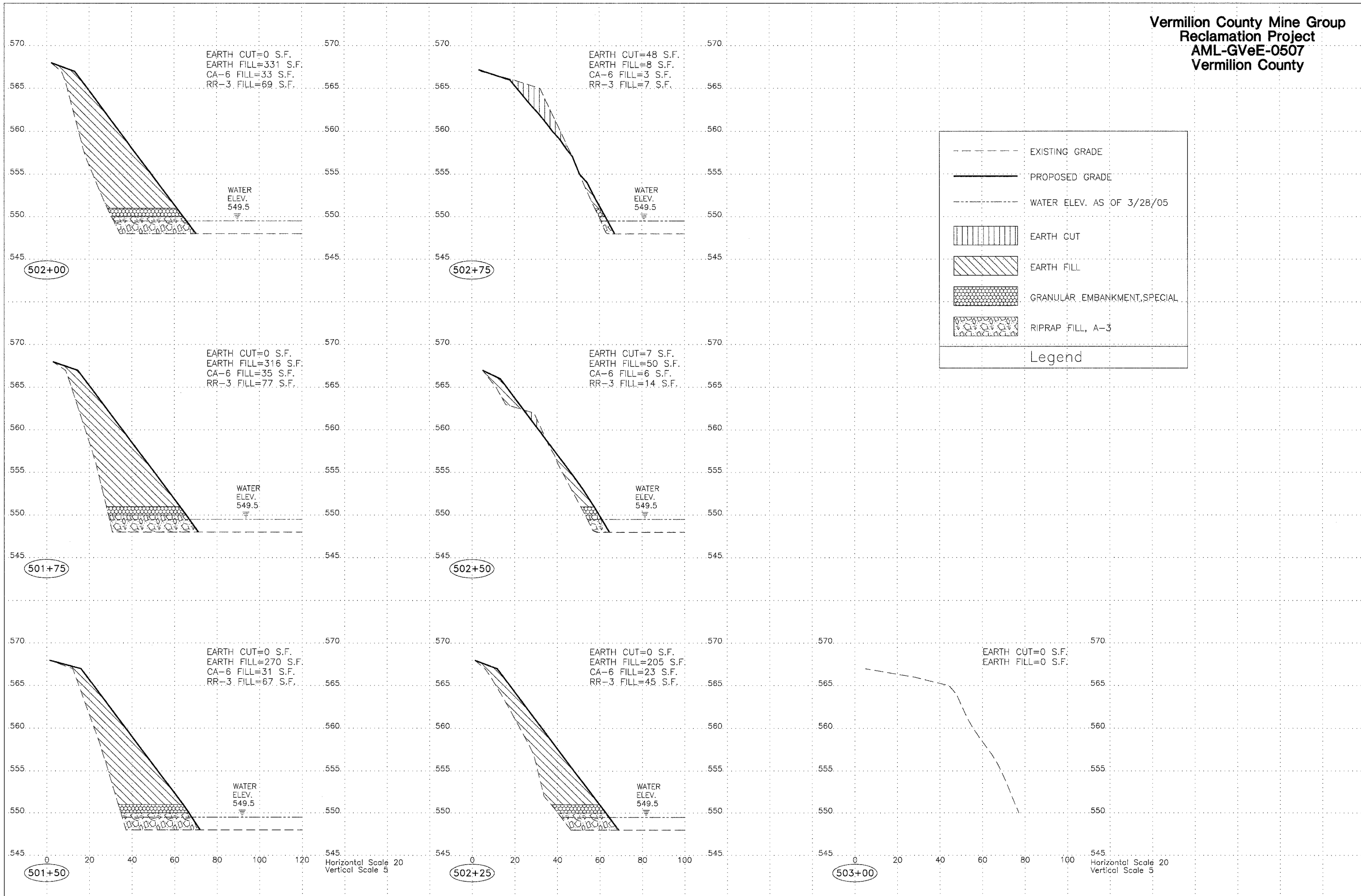
Vermilion County Mine Group
 Reclamation Project
 AML-GV0E-0507
 Vermilion County

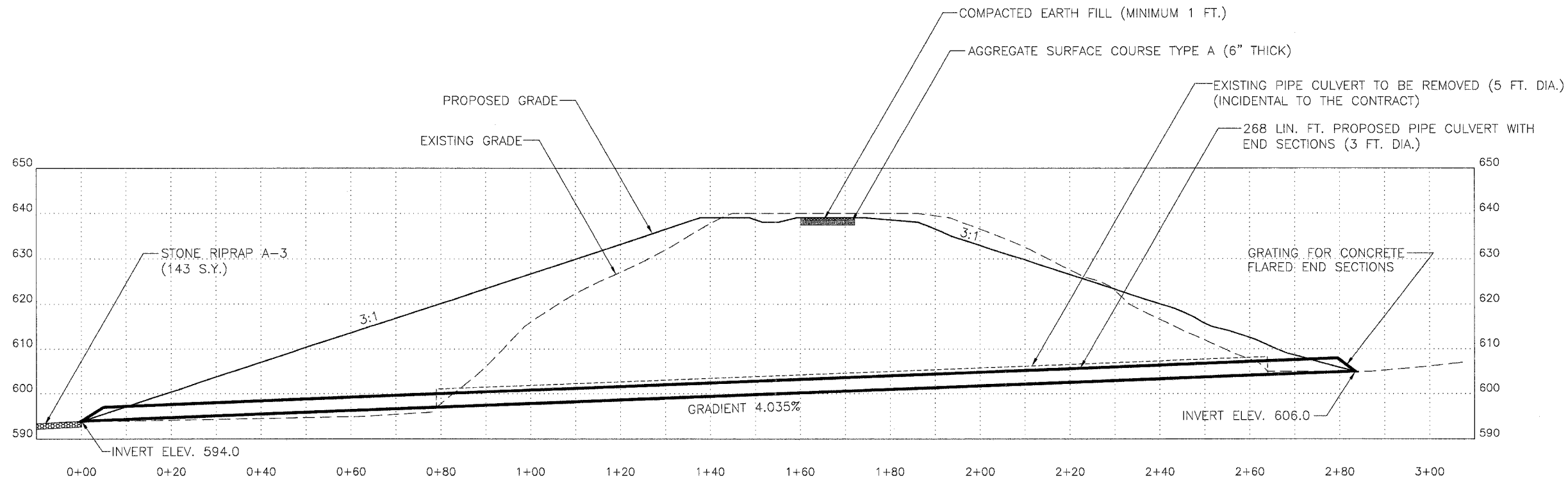


Vermilion County Mine Group
 Reclamation Project
 AML-GV6E-0507
 Vermilion County

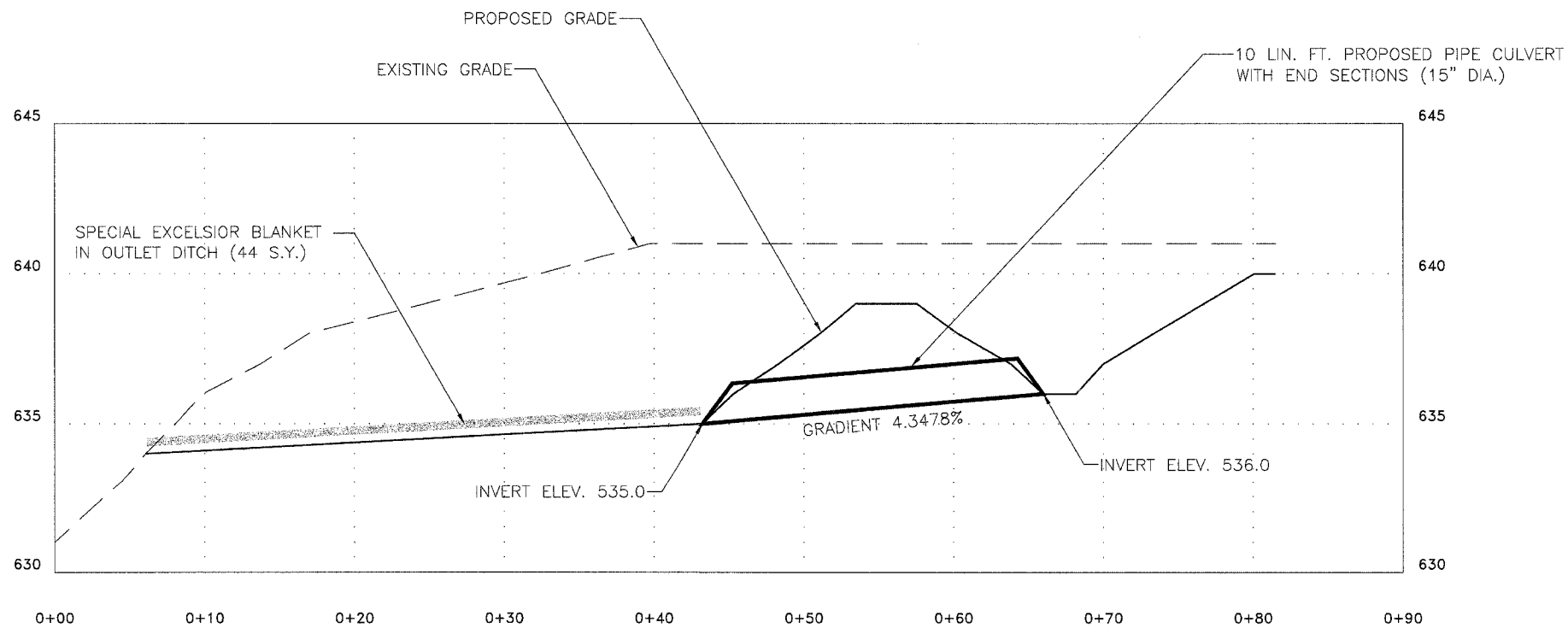




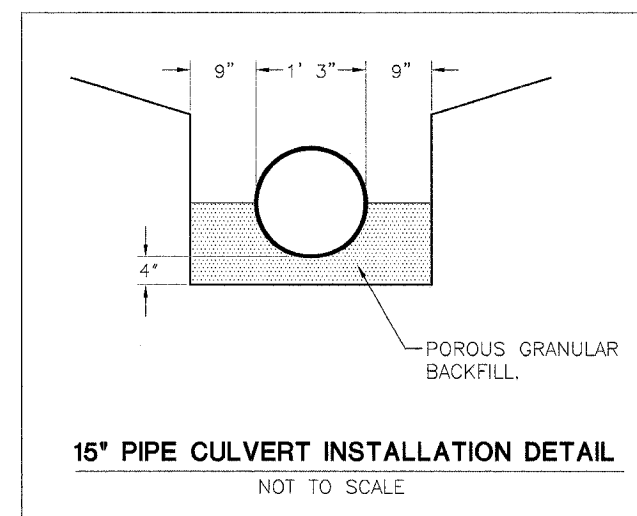
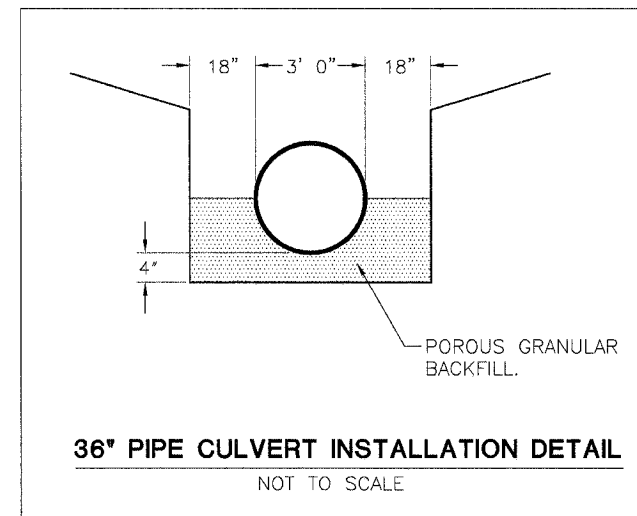


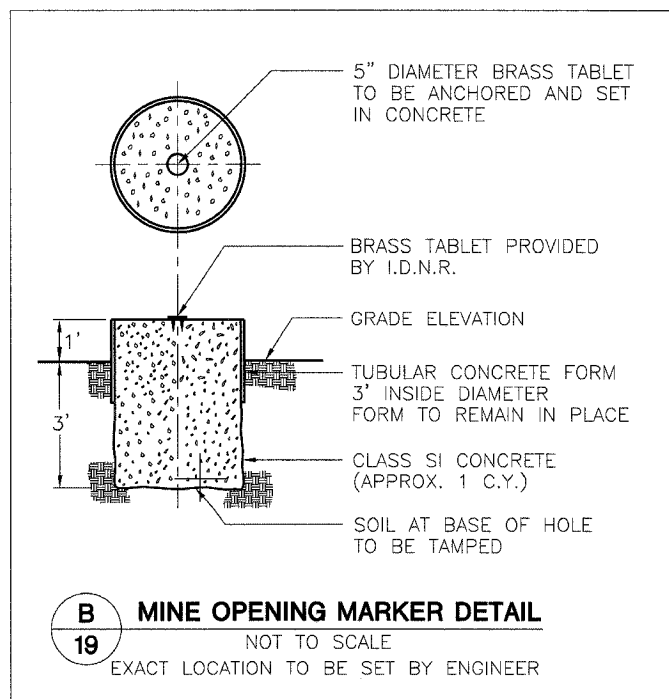
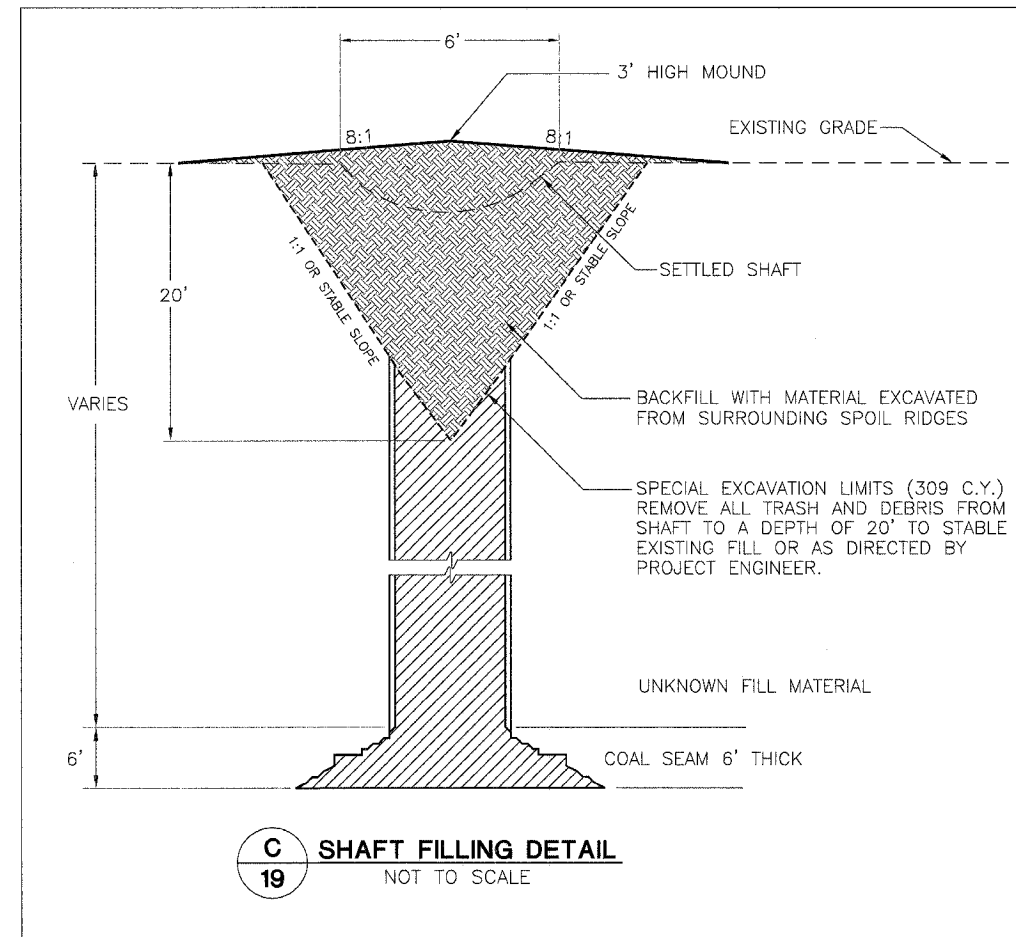
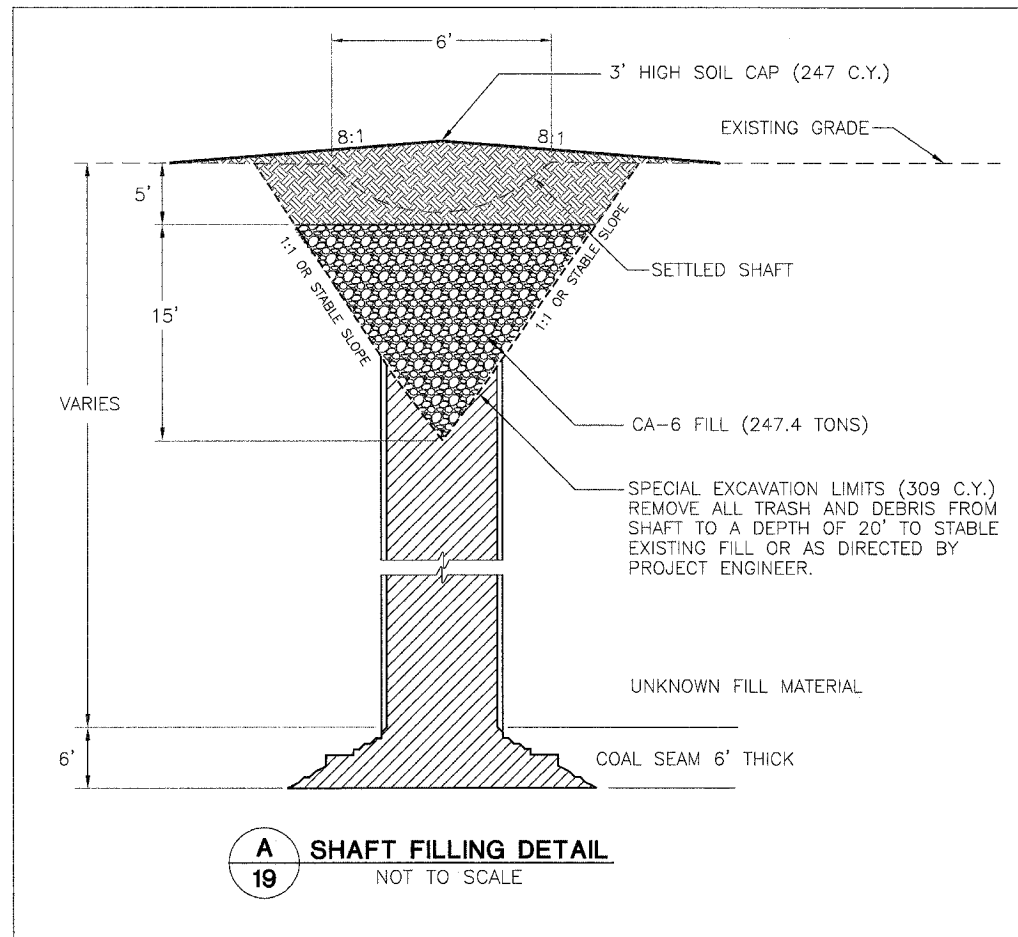


SECTION THROUGH PROPOSED CULVERT INSTALLATION



SECTION THROUGH PROPOSED ROADSIDE CULVERT INSTALLATION





NOTE:
DUE TO THE UNKNOWN CONDITIONS THAT EXIST IN AND AROUND THE SHAFTS, THE CONTRACTOR SHALL USE EXTREME CAUTION WHEN PERFORMING WORK NEAR THEM. THE ENGINEER RESERVES THE RIGHT TO INCREASE OR DECREASE THE QUANTITY FOR SPECIAL EXCAVATION AND BACKFILLING MATERIALS AS DETERMINED BY THE EXACT CONDITIONS ENCOUNTERED DURING SPECIAL EXCAVATION.

Drawn By: M-LF
Checked By: _____
Date: 8/23/2006