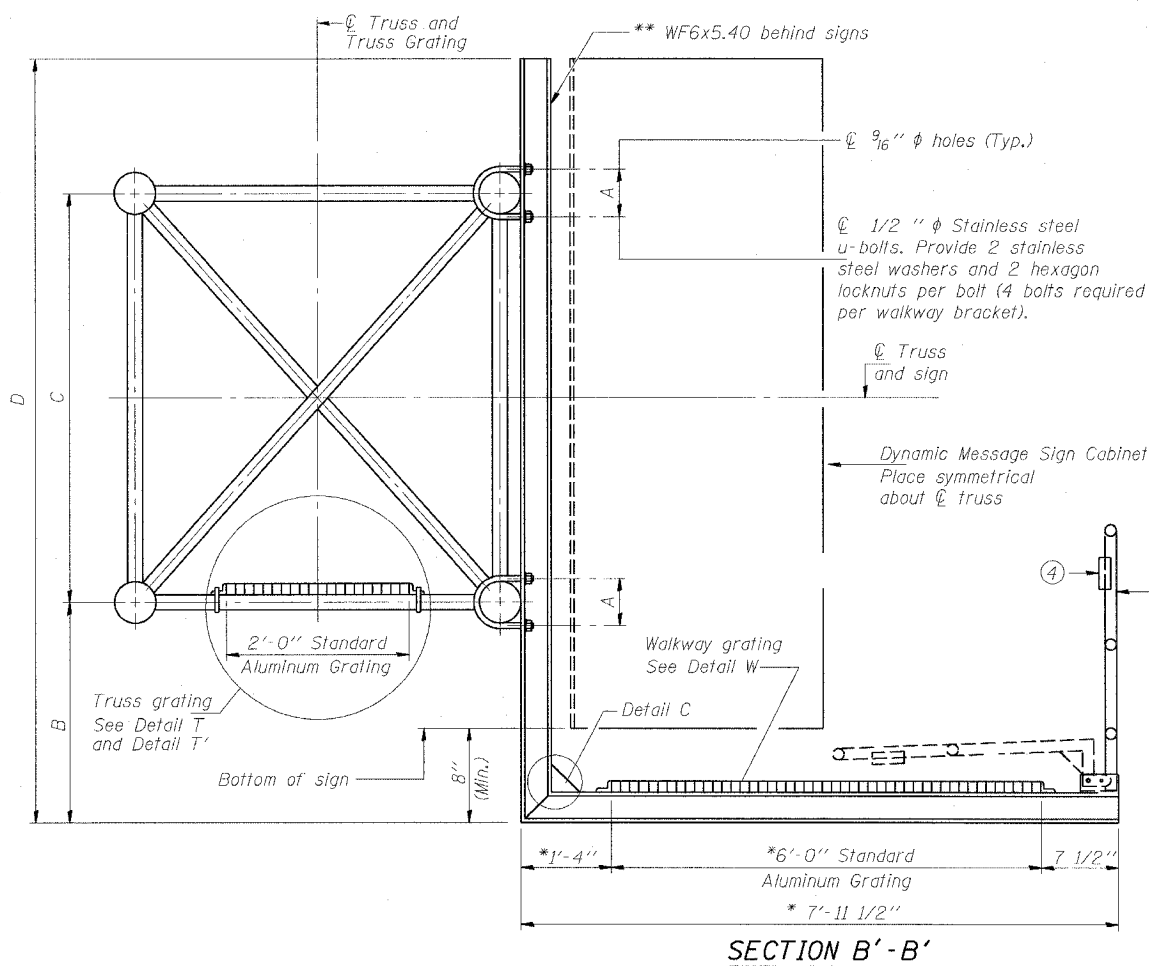


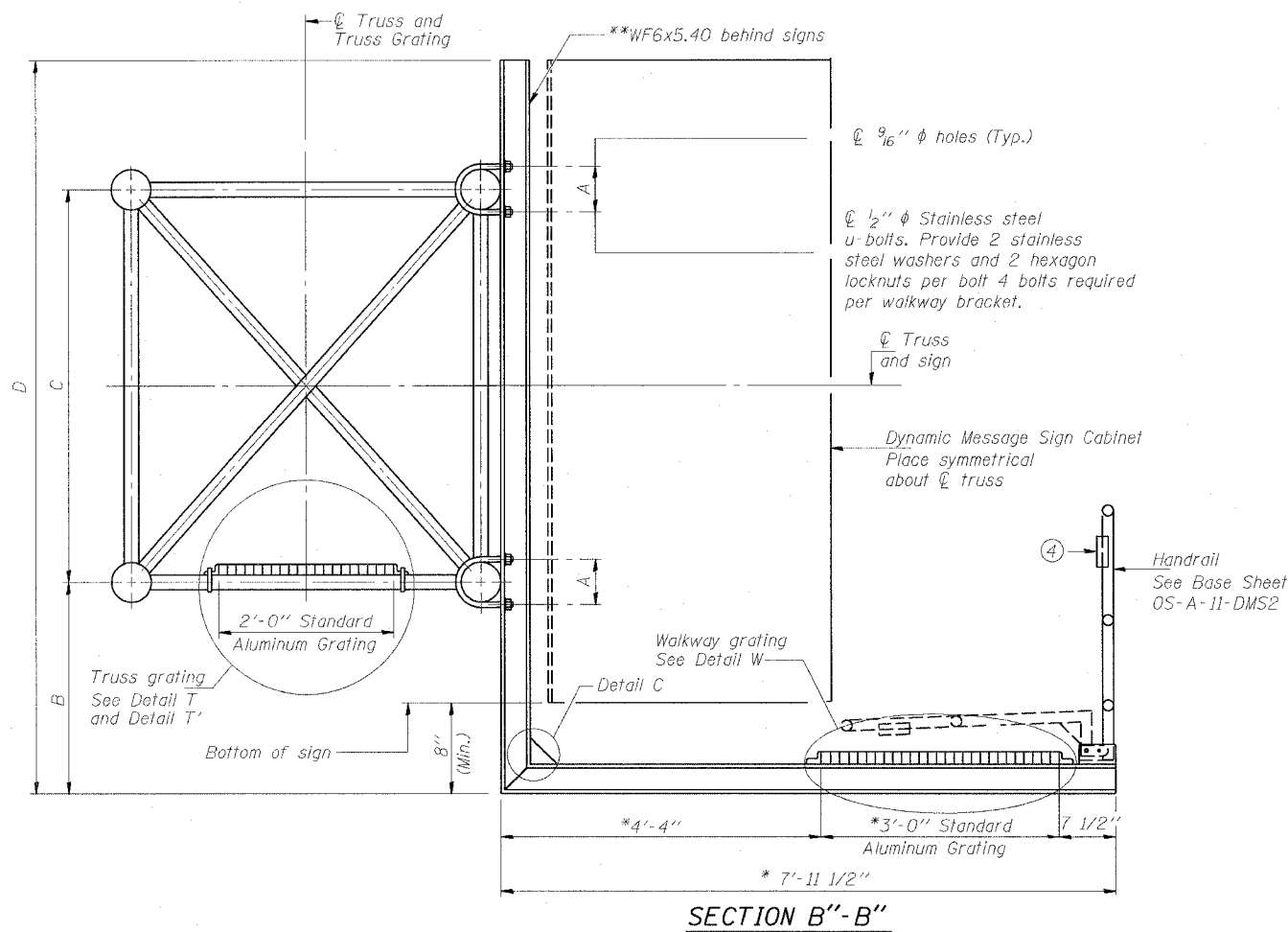
STATE OF ILLINOIS  
DEPARTMENT OF TRANSPORTATION

ROUTE NO.	SECTION	COUNTY	TOTAL SHEETS	SHEET NO.
F.A.I. RTE. 90/94		COOK	312	153
FED. ROAD DIST. NO. 1	ILLINOIS	FED. AID PROJECT-		

• (1919,15 & 2021-922 PT.1) R-1 60462



SECTION B'-B'



SECTION B''-B''

\* Bracket and grating dimensions are nominal and will vary based on actual DMS cabinet dimensions plus manufacturer's mounting devices, and providing clearance between the lowered handrail and DMS cabinet.

\*\* Cabinet manufacturer must design and supply hardware for connection of cabinet to WF6's. Bolts must be stainless steel or hot dip galvanized high strength per IDOT specifications.

Note:  
For dimensions "A" to "D" and remaining details, see sheet OS-A-10-DMS2

DESIGNED - JSS	20
CHECKED - RDP	EXAMINED
DRAWN - JSS	PASSED
CHECKED - RDP	

NUMBER	REVISION	DATE
1	Updated Sheet	7/21/06

OS-A-10a-DMS2 1/7/2005

OSS-26  
OVERHEAD SIGN STRUCTURES  
ALTERNATE ALUMINUM WALKWAY DETAILS  
FOR DMS

F.A.I. 90/94 (DAN RYAN EXPRESSWAY)  
63RD STREET TO GARFIELD BLVD (NB LOCAL LANES)  
PROPOSED IMPROVEMENT  
63RD STREET TO GARFIELD BLVD

P:\V-40488\CIVIL\8-Chrs 18 & 19-Signing\SS10A262A.dwg 12/25/06 PW