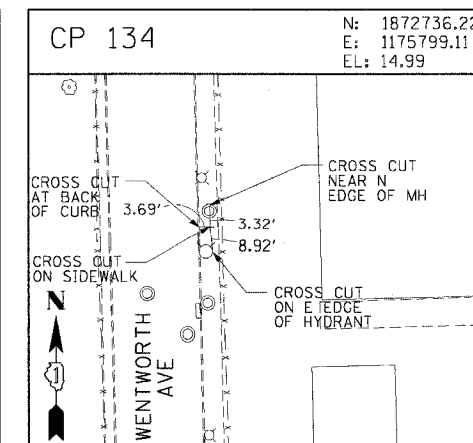
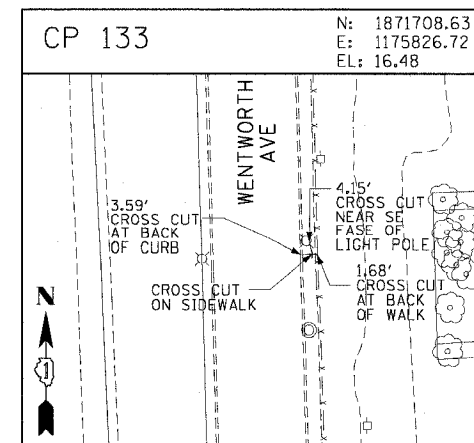
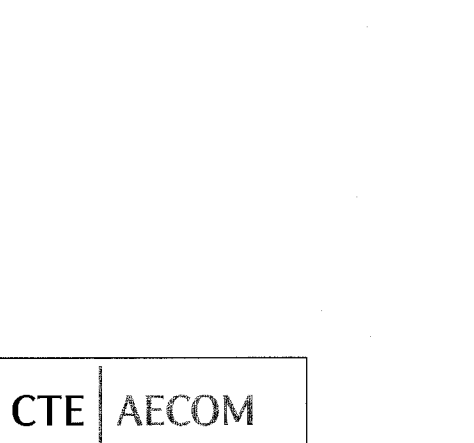
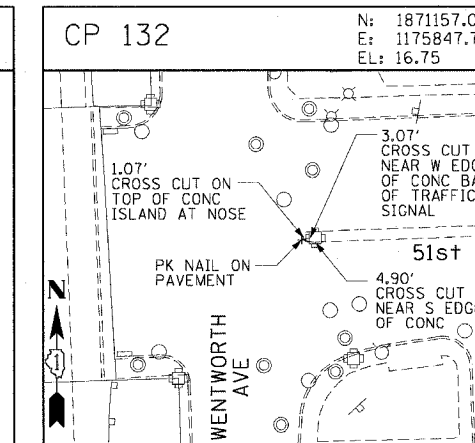
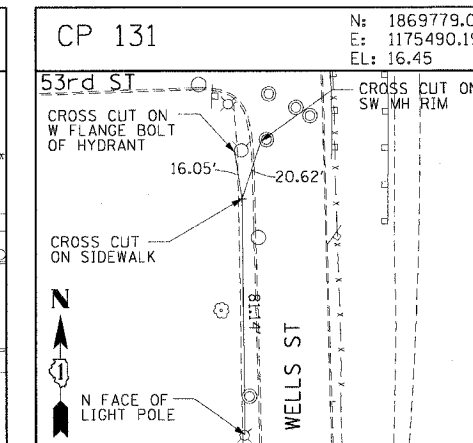
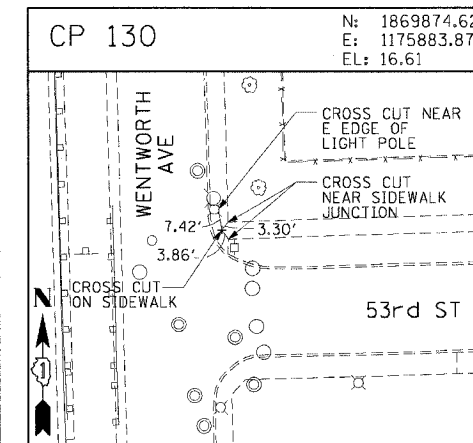
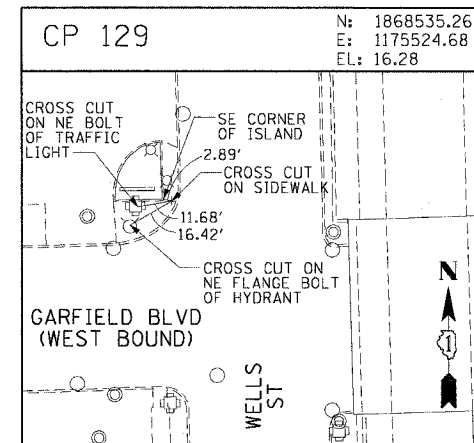
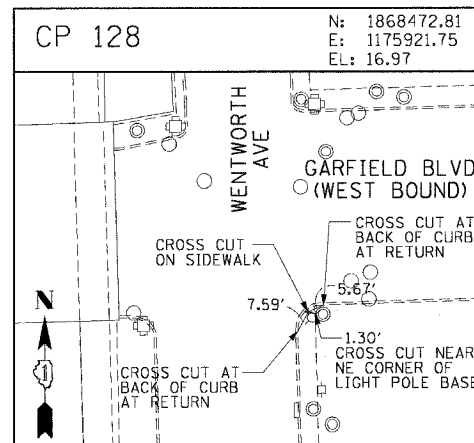
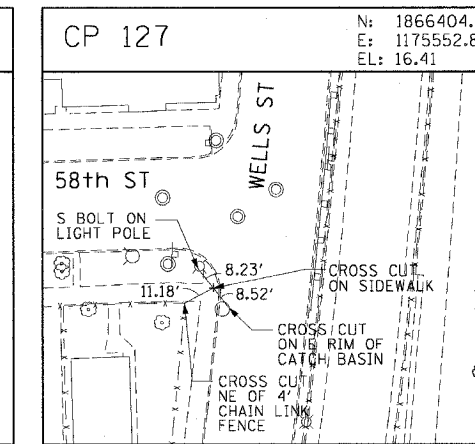
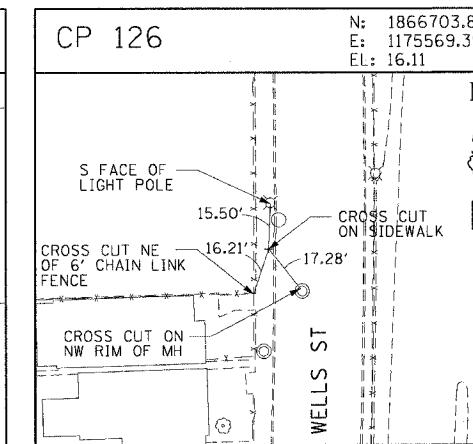
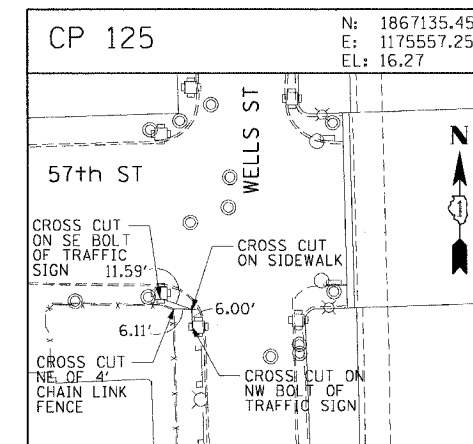
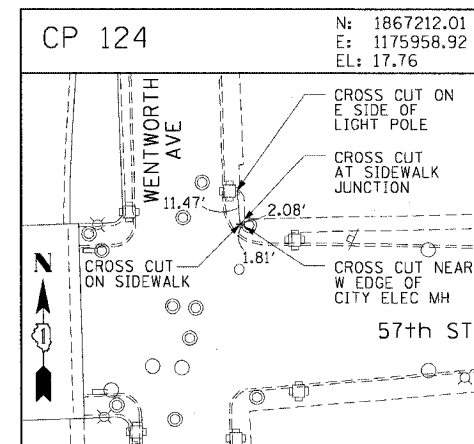
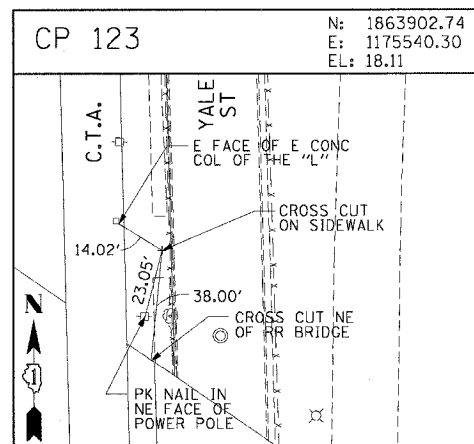
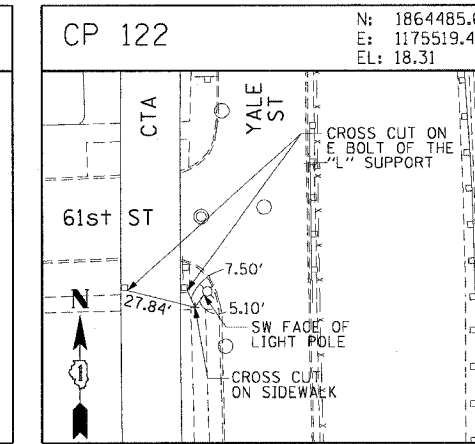
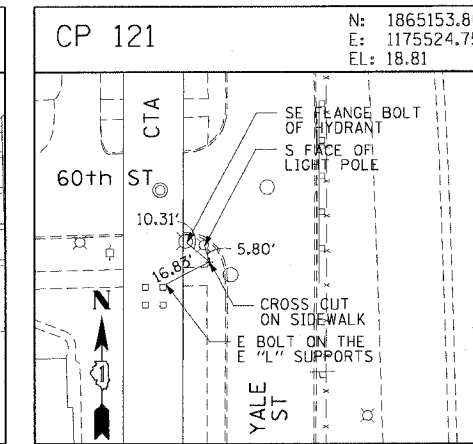
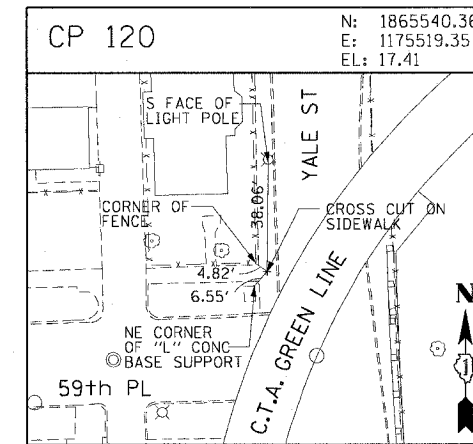
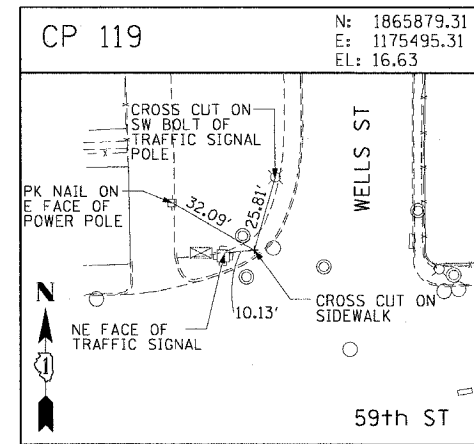
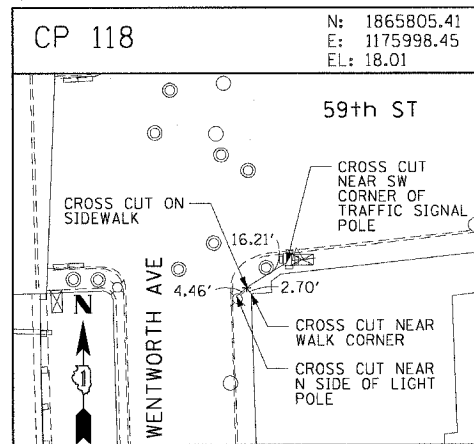


F.A.I. RTE.	SECTION	COUNTY	TOTAL SHEETS	SHEET NO.
90/94		COOK	247	27
STA.		TO STA.		
FED. ROAD DIST. NO. 1		ILLINOIS FED. AID PROJECT		
60A63		• (1919.15, 2021-922 PT1 & PT2) R-2		



REVISIONS	
NAME	DATE

ILLINOIS DEPARTMENT OF TRANSPORTATION
 F.A.I. 90/94 (DAN RYAN EXPRESSWAY)
 63RD STREET TO GARFIELD BLVD (SB LOCAL LANES)

SURVEY TIES AND CONTROL POINTS

SCALE: 1"=30'
 DATE: June 9, 2006

DRAWN BY: MRK
 CHECKED BY: JAL

CTE | AECOM

6/9/2006 12:56:52 PM
 P:\0468\ch\118-ctrls-18 & 19.spl.corr.18\align\118\022222.dwg