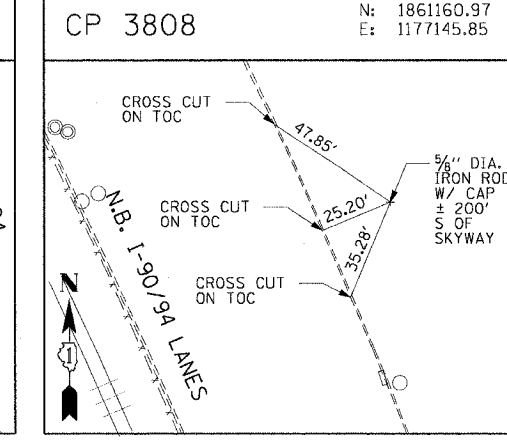
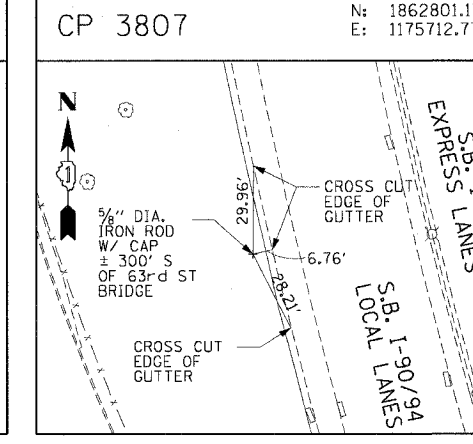
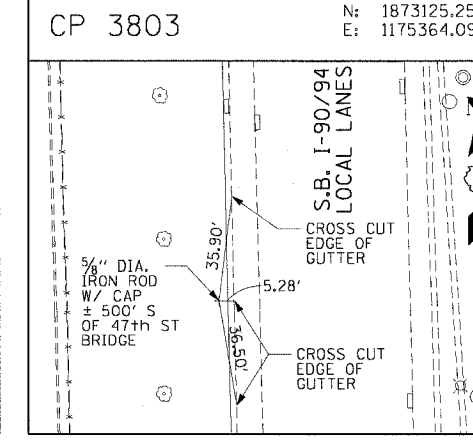
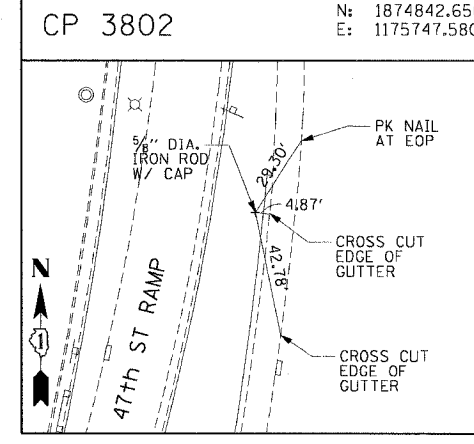
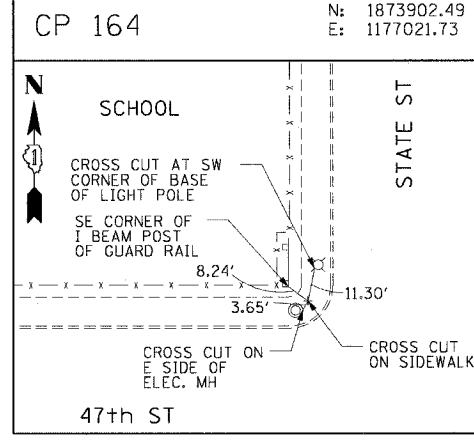
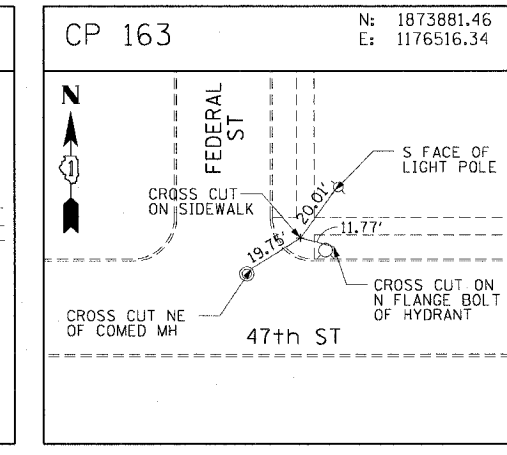
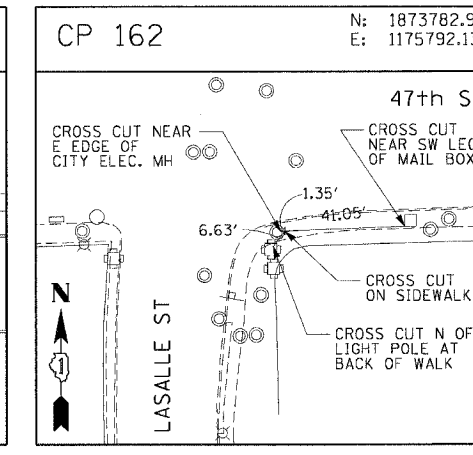
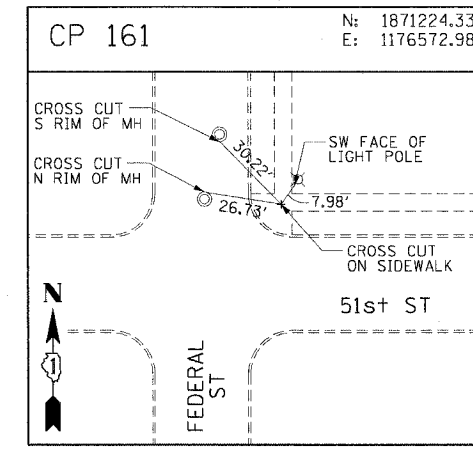
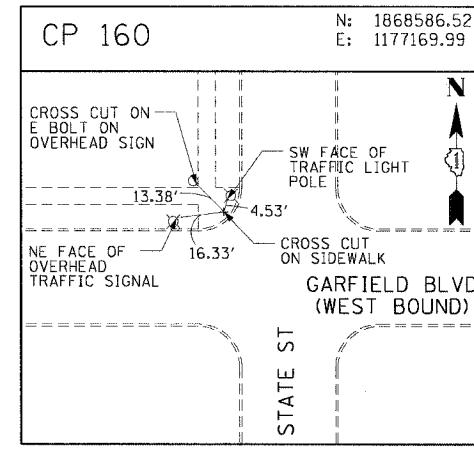
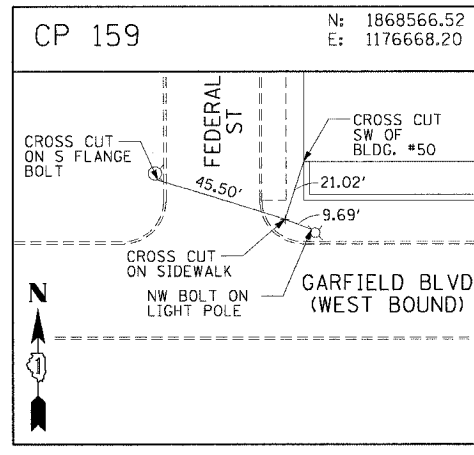
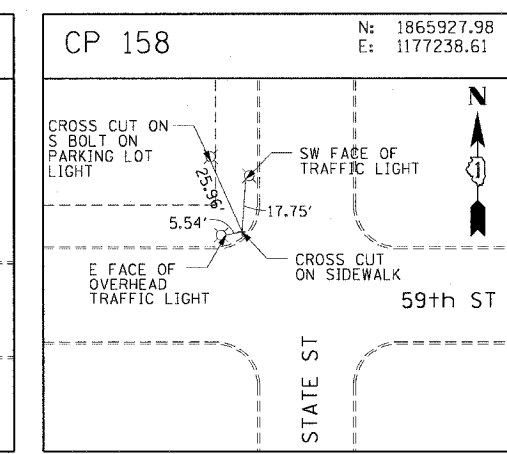
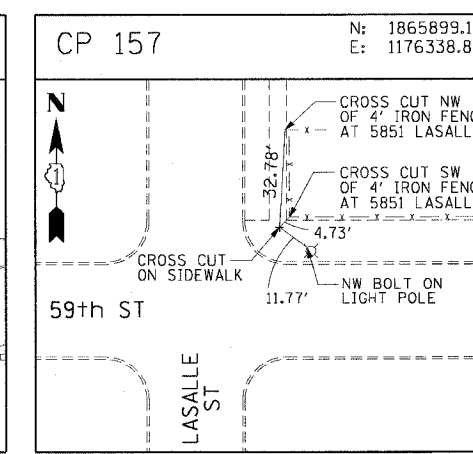
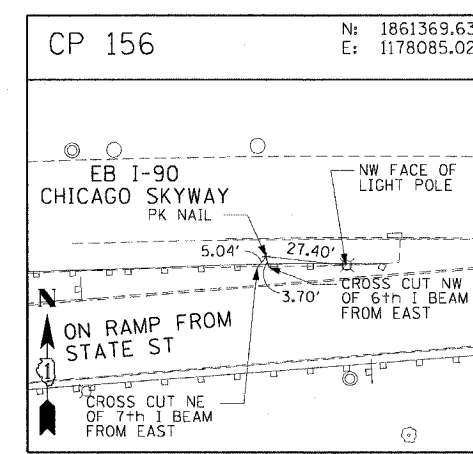
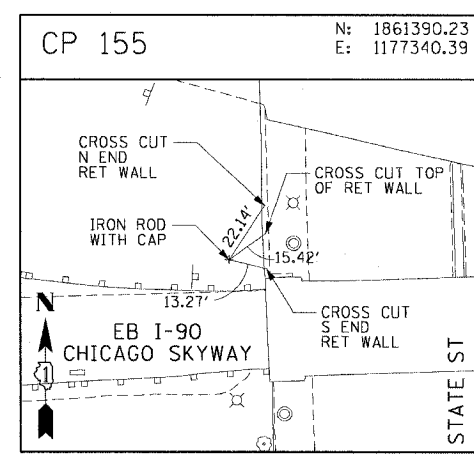
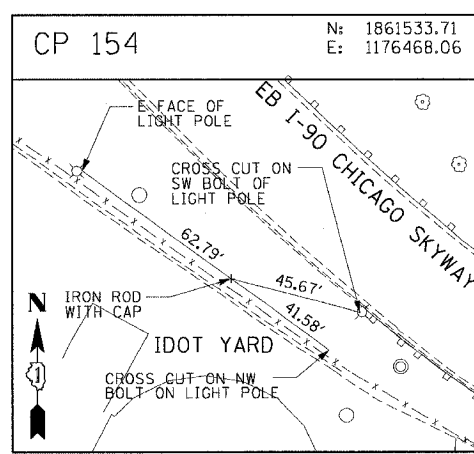


F.A.I. RTE.	SECTION	COUNTY	TOTAL SHEETS	SHEET NO.
90/94	*	COOK	247	29
STA.		TO STA.		
FED. ROAD DIST. NO. 1		ILLINOIS FED. AID PROJECT		
60A63		• (1919.15, 2021-922 PT1 & PT2) R-2		



CTE | AECOM

REVISIONS	
NAME	DATE

ALT-11
 ILLINOIS DEPARTMENT OF TRANSPORTATION
 F.A.I. 90/94 (DAN RYAN EXPRESSWAY)
 63RD STREET TO GARFIELD BLVD (SB LOCAL LANES)
 SURVEY TIES AND CONTROL POINTS
 SCALE: 1"=30'
 DATE: June 9, 2006
 DRAWN BY: MRK
 CHECKED BY: JAL

P:\P\0466\ch11\18\ctrls_18 & 19.dwg 12/26/05 T/M