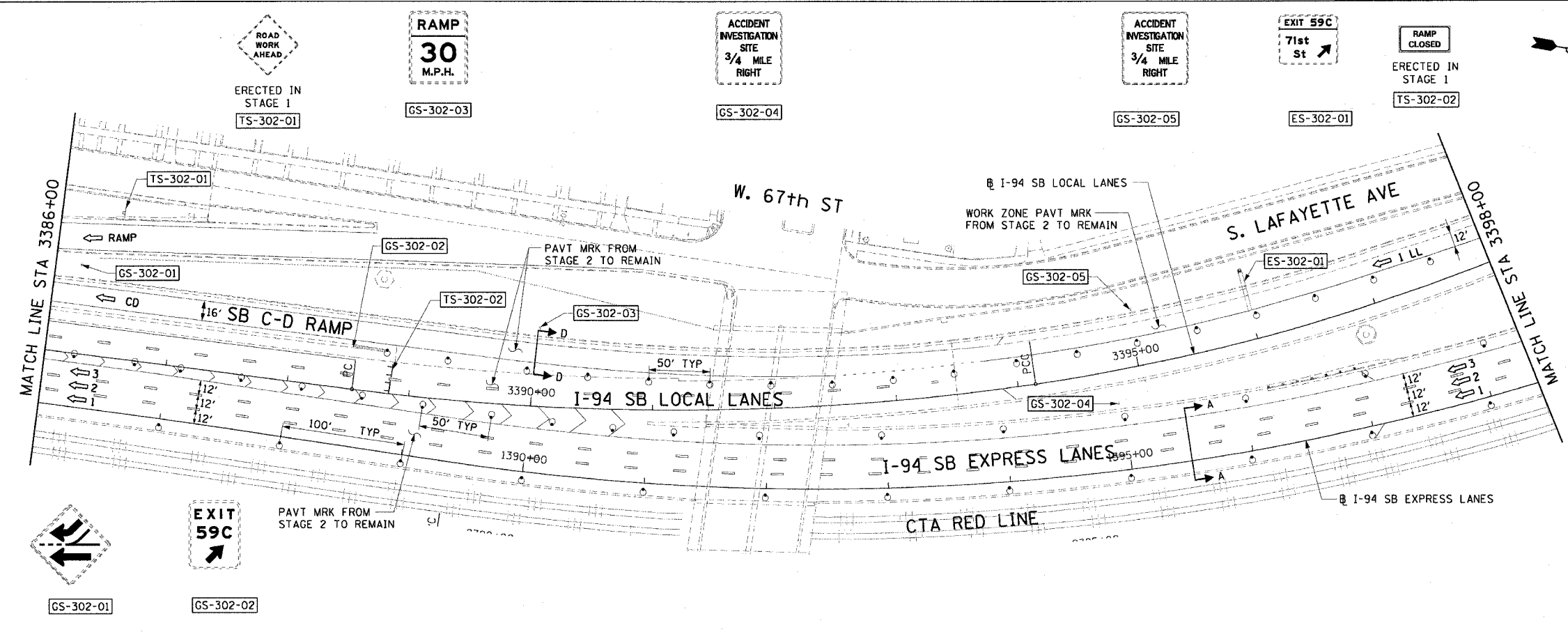
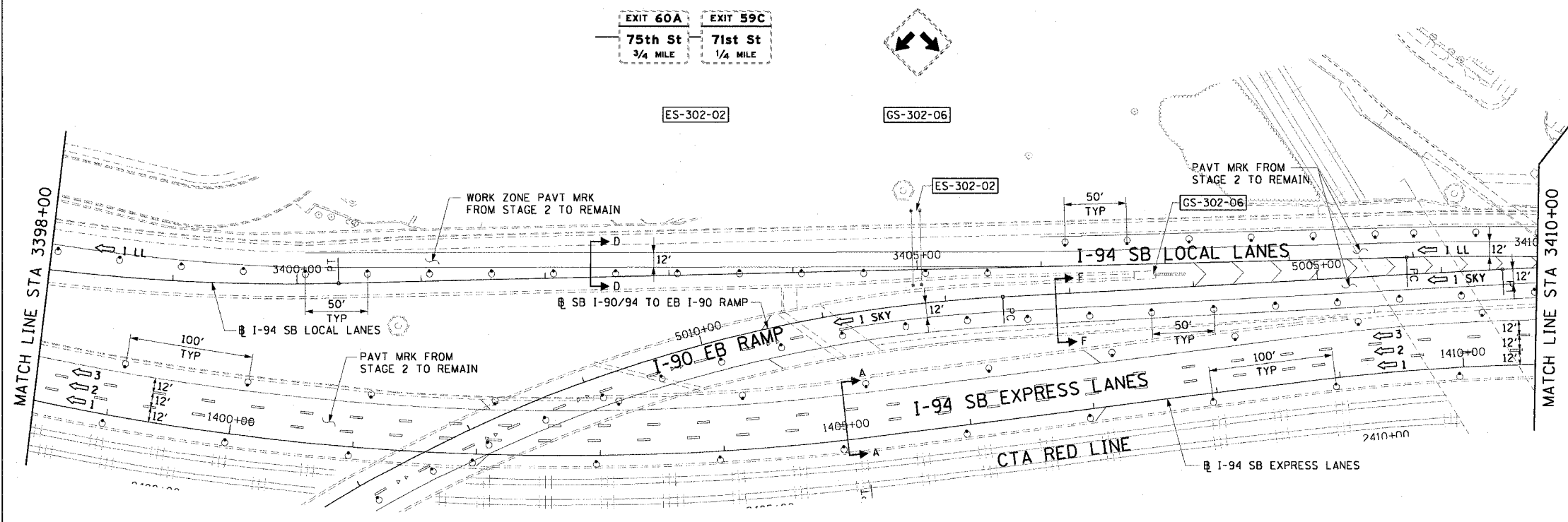


F.A.I. RTE.	SECTION	COUNTY	TOTAL SHEETS	SHEET NO.
90/94		COOK	247	52
STA. 3386+00 TO STA. 3410+00				
FED. ROAD DIST. NO. 1 ILLINOIS FED. AID PROJECT				
60A63 • (1919.15, 2021-922 PT1 & PT2) R-2				



- LEGEND:**
- 1 → LANE NUMBER AND DIRECTION OF TRAFFIC
 - [Hatched Box] WORK AREA
 - [Dashed Box] TEMPORARY PAVEMENT
 - [Symbol] IMPACT ATTENUATORS, TEMPORARY (NON-REDIRECTIVE), TEST LEVEL 3
 - [Symbol] DRUM OR BARRICADE TYPE II WITH STEADY BURNING LIGHT
 - [Symbol] BARRICADE TYPE III
 - [Symbol] TEMPORARY CONCRETE BARRIER
 - ① LINE 4" (YELLOW EDGE)
 - ② LINE 4" (WHITE EDGE)
 - ③ LINE 4" (SKIP DASH, 6' SKIP - 2' DASH, WHITE)
 - ④ LINE 5" (SKIP DASH, 30' SKIP - 10' DASH, WHITE)
 - ⑤ LINE 8" (WHITE GORE LINE)
 - ⑥ LINE 8" (SKIP DASH, 12' SKIP - 3' DASH, WHITE)
 - ⑦ LINE 12" (DIAGONAL, 30' C-C, WHITE)
 - ⑧ LETTERS AND SYMBOLS
 - [ES-XXX-XX] EXISTING OVERHEAD OR CANTILEVER SIGNS
 - [GS-XXX-XX] EXISTING POST MOUNTED SIGNS
 - [TS-XXX-XX] TEMPORARY SIGNS
 - +XX.XX STATION PROVIDED FROM THE ± SB I-90/94 EXPRESS LANES
 - (+XX.XX) STATION PROVIDED FROM THE ± SB I-90/94 LOCAL LANES



- NOTES:**
1. SEE SHEET MOTTS-01 FOR TYPICAL SECTIONS.
 2. SEE TEMPORARY SIGN PANEL SHEETS FOR DETAILS.
 3. PROVIDE TRAFFIC CONTROL ON THE EB SKYWAY RAMP ENDING AT STATION 5020+10.00 (EAST ABUTMENT OF THE STATE STREET BRIDGE).

CTE | AECOM

REVISIONS	
NAME	DATE

MOT-302
 ILLINOIS DEPARTMENT OF TRANSPORTATION
 F.A.I. 90/94 (DAN RYAN EXPRESSWAY)
 63RD STREET TO GARFIELD BLVD (SB LOCAL LANES)
 SUGGESTED STAGES OF CONSTRUCTION
 AND TRAFFIC CONTROL
 STAGE 3
 SCALE: 1"=50'
 DATE: June 9, 2006
 DRAWN BY: PHP
 CHECKED BY: RMG

6/2/2006 3:40:52 PM
 I:\projects\9094\9094-01\9094-01.dwg
 19/08/2006 10:00:00 AM
 19/08/2006 10:00:00 AM