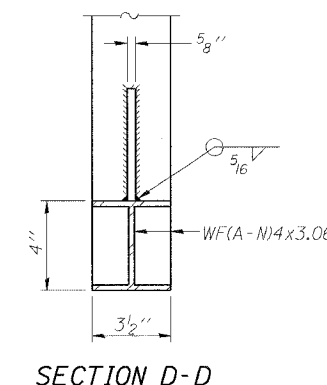
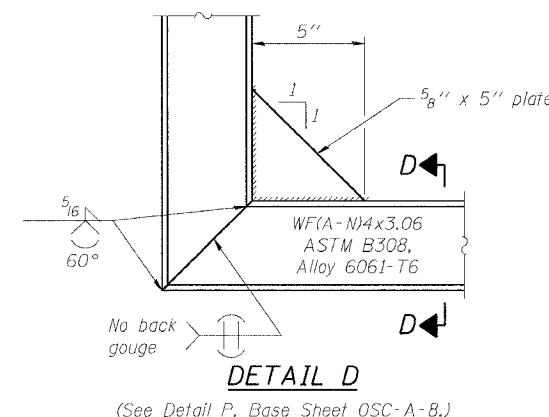
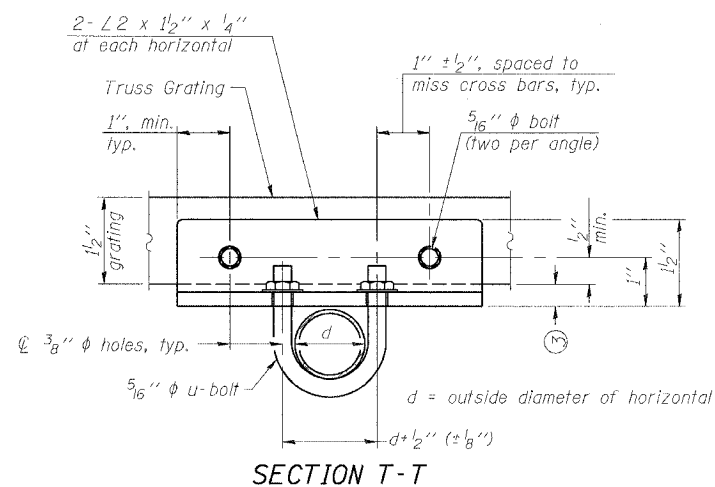
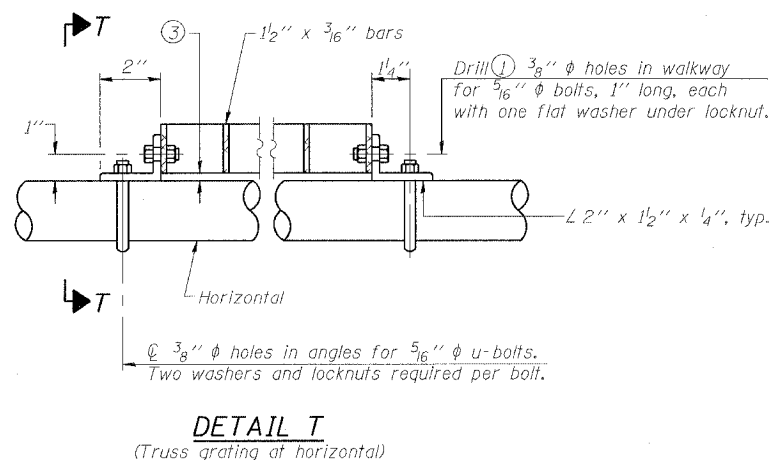
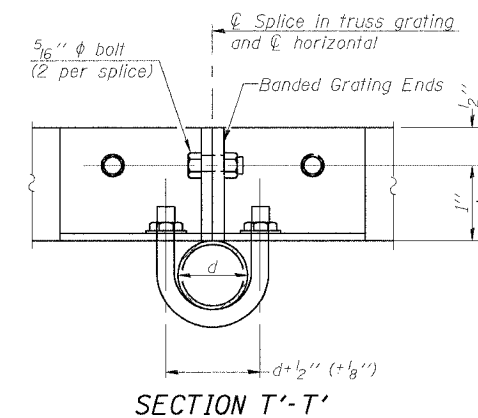
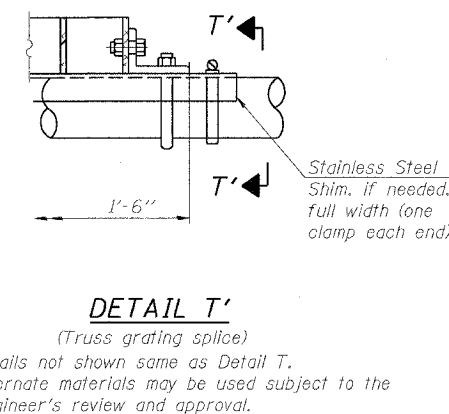
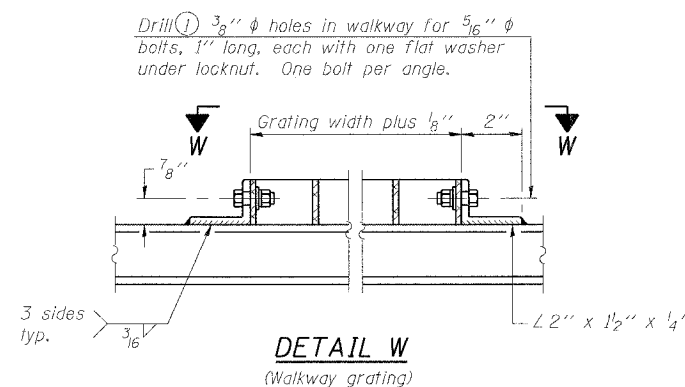
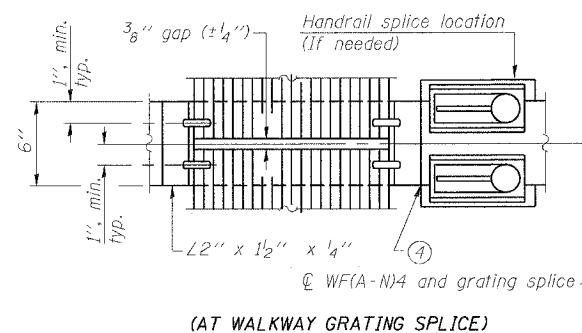
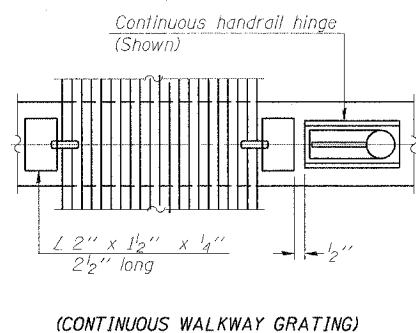
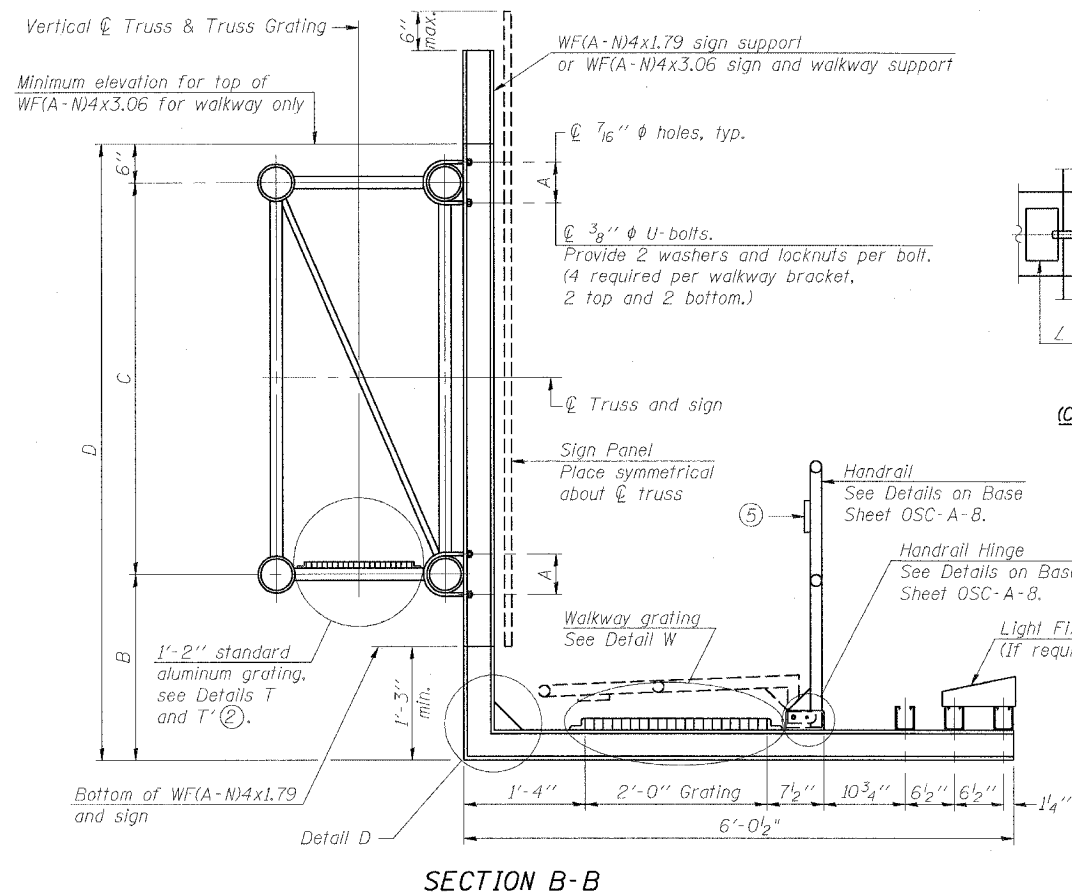


STATE OF ILLINOIS
DEPARTMENT OF TRANSPORTATION

ROUTE NO.	SECTION	COUNTY	SHEET	SHEET
F.A.I. RTE. 90/94		COOK	247	123
FED. ROAD DIST. NO. 1	ILLINOIS	FED. AID PROJECT-		
• (1915.15 & 2021-922 PT.1) R-2				



NUMBER	REVISION	DATE

DESIGNED - JSS
CHECKED - MJP
DRAWN - JSS
CHECKED - MJP

EXAMINED
PASSED
ENGINEER OF STRUCTURAL SERVICES
ENGINEER OF BRIDGES AND STRUCTURES

OSC-A-7

1-7-05

- Drilling holes in grating may be done in shop or field, based on Contractor's preference and subject to accurate alignment.
- When truss grating must be spliced, use suggested detail or other methods subject to the Engineer's review and approval. Locate splice to avoid interference between cross bars and bolt locations.
- Tube to grating gap may vary from 0 to 1/2". max. to align walkway, allow for camber, etc.
- If Handrail Joint present, weld angle to WF(A-N)4 and 1/4" extension bars. (See Base Sheet OSC-A-B)
- 1/8" x 1/2" x 2" welded to handrail posts to protect locations that contact grating.

Structure Number	Station	A	B	C	D
IC0161094R057.9	3468+00.00	7"	4'-9"	5'-6"	10'-9"

CANTILEVER SIGN STRUCTURES
WALKWAY DETAILS
ALUMINUM TRUSS & STEEL POST

F.A.I. 90/94 (DAN RYAN EXPRESSWAY)
63RD STREET TO GARFIELD BLVD (SB LOCAL LANES)
PROPOSED IMPROVEMENT

OSS-25