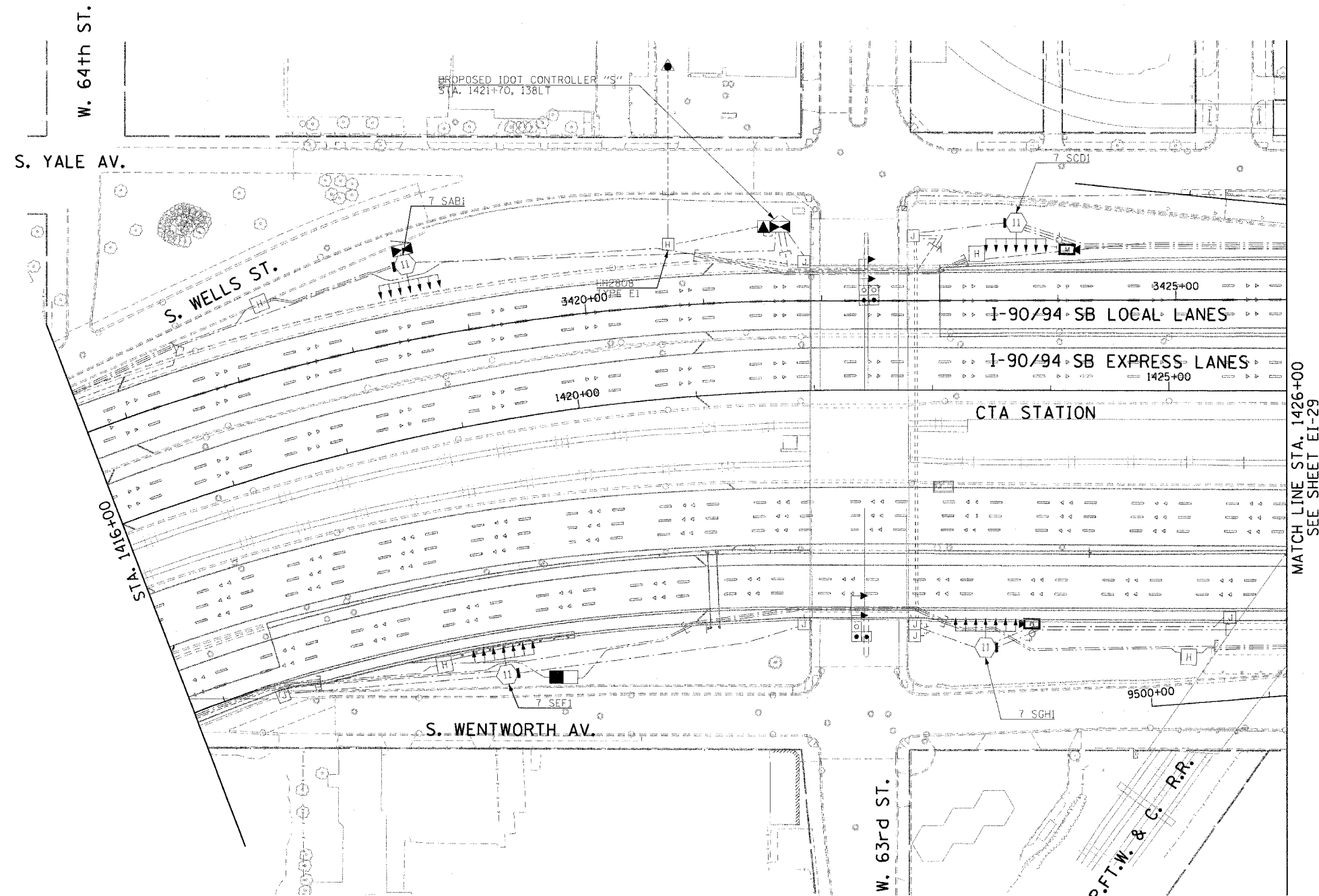


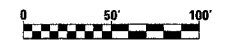
F.A.I. RTE.	SECTION	COUNTY	TOTAL SHEETS	SHEET NO.
90/94		COOK	247	133
STA. 1416+00.00		TO STA. 1426+00.00		
FED. ROAD DIST. NO. 1		ILLINOIS FED. AID PROJECT		
60A63		(1919.15, 2021-922 PT1 & PT2) R-2		



NO WORK PROPOSED
ON THIS SHEET

MATCH LINE STA. 1426+00
SEE SHEET EI-29

CTE | AECOM



EI-28

REVISIONS	
NAME	DATE

ILLINOIS DEPARTMENT OF TRANSPORTATION
F.A.I. 90/94 (DAN RYAN EXPRESSWAY)
63RD STREET TO GARFIELD BLVD (SB LOCAL LANES)
ELECTRICAL INFRASTRUCTURE PLAN
SCALE: 1"=50'
DATE: June 9, 2006
DRAWN BY: HAR
CHECKED BY: JPC

A:\P4\63rd\elec\8-ctrls 18 & 19\central 1903\1719002028.dwg 06/09/2006 03:03:34 PM