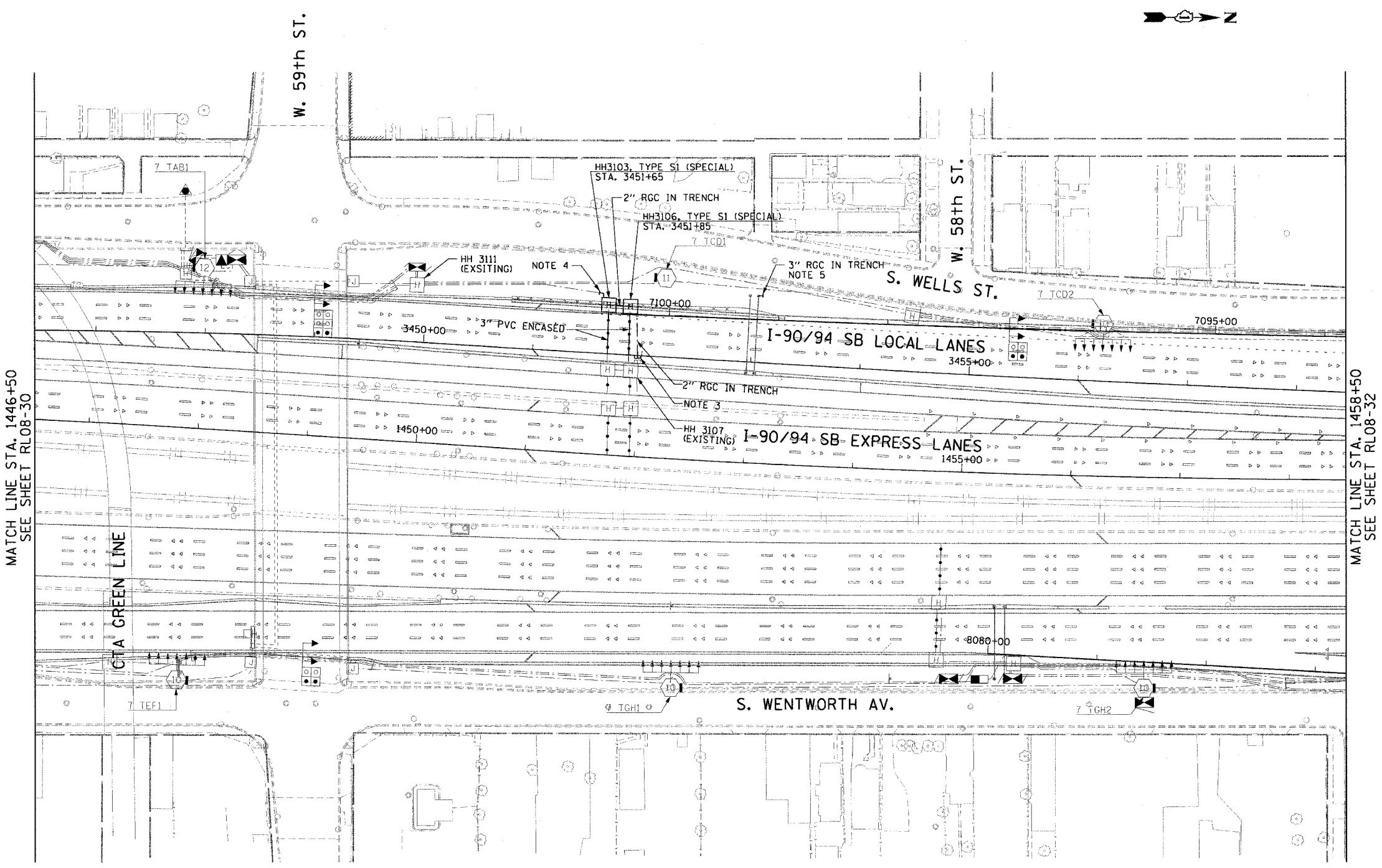


F.A.I. RTE.	SECTION	COUNTY	TOTAL SHEETS	SHEET NO.
90/94	*	COOK	247	136
STA. 1446+50.00 TO STA. 1458+50.00				
FED. ROAD DIST. NO. 1 ILLINOIS FED. AID PROJECT				
60A63 • (1919.15, 2021-922 PT1 & PT2) R-2				

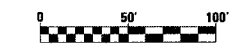
NOTES:

1. SEE DRAWINGS EI-100 AND EI-101 FOR ELECTRICAL SYMBOLS AND ABBREVIATIONS.
2. SEE DRAWING EI-102, EI-103 AND EI-104 FOR TYPICAL HANDHOLE INSTALLATION DETAILS.
3. THE CONTRACTOR SHALL LOCATE THE EXISTING CONDUIT STUB-OUT INSTALLED IN IDOT CONTRACT NO. 62302 AND CONNECT THE PROPOSED CONDUIT.
4. THE CONTRACTOR SHALL PROVIDE 5' OF 2" RGC CONDUIT IN TRENCH FROM THE WEST SIDE OF HH3103 PAST THE PROPOSED GUARD RAIL FOR CONNECTION TO A 2" CNC DUCT FROM HH3111 THAT IS INSTALLED IN CONTACT 62583.
5. EXTEND CONDUIT STUB-OUT 2' BEYOND THE SIGN STRUCTURE FOUNDATION. CAP FOR FUTURE USE.
6. UNLESS NOTED OTHERWISE, ALL ITEMS AND WORK SHOWN IN HEAVY LINE WEIGHT ON THIS DRAWING ARE PROPOSED NEW ITEMS AND WORK.



MATCH LINE STA. 1446+50
SEE SHEET RL08-30

MATCH LINE STA. 1458+50
SEE SHEET RL08-32



EI-31

REVISIONS	
NAME	DATE

ILLINOIS DEPARTMENT OF TRANSPORTATION
F.A.I. 90/94 (DAN RYAN EXPRESSWAY)
63RD STREET TO GARFIELD BLVD (SB LOCAL LANES)

ELECTRICAL INFRASTRUCTURE PLAN

SCALE: 1"=50'
DATE: June 9, 2006

DRAWN BY: HAR
CHECKED BY: JPC

CTE | AECOM

06/02/2006 03:03:39 PM