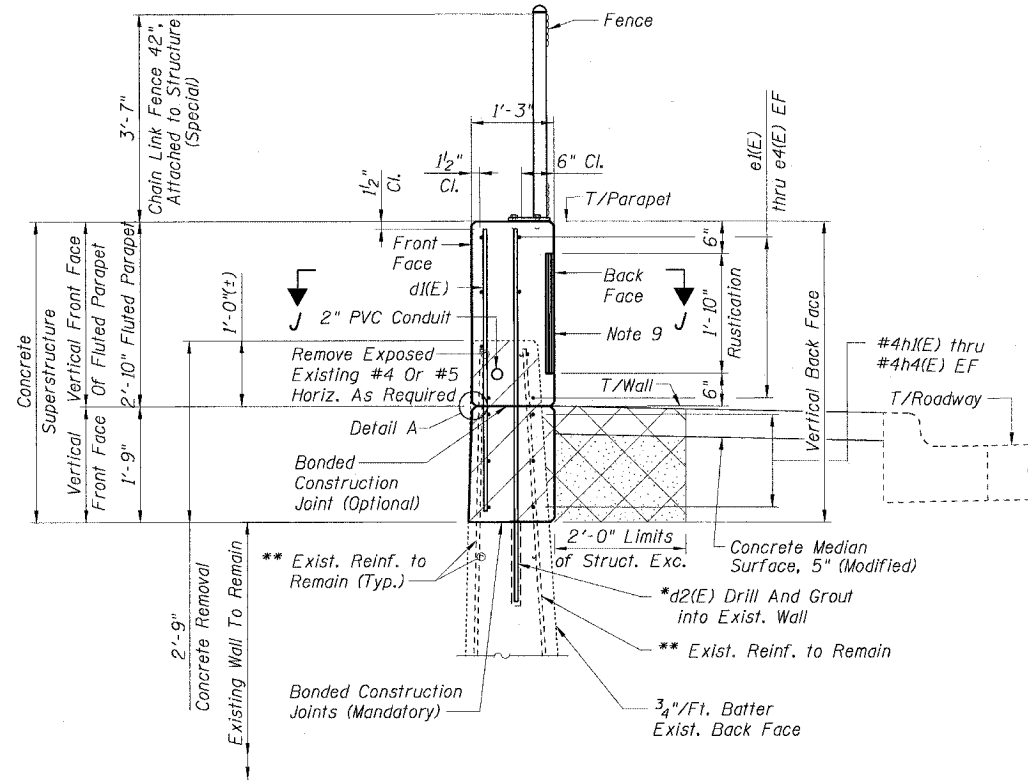


STATE OF ILLINOIS
DEPARTMENT OF TRANSPORTATION

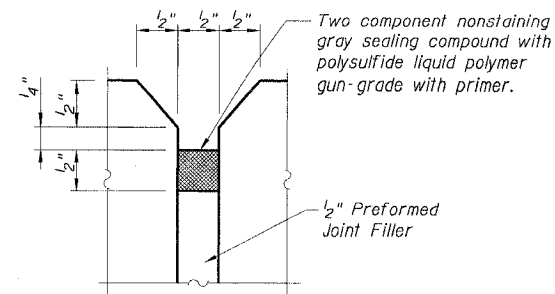
F.A.I. RTE.	SECTION	COUNTY	TOTAL SHEETS	SHEET NO.
90/94	*	COOK	247	185
STA.	TO STA.			
FED. ROAD DIST. NO. 1	ILLINOIS	FED. AID PROJECT		
60A63	* (1919.15, 2021-922 PT1 & PT2) R-2			



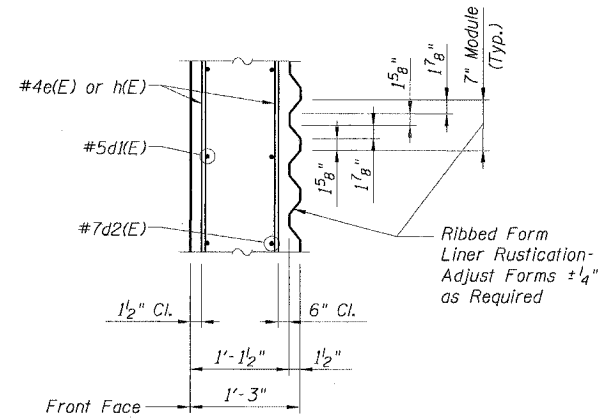
TYPICAL TOP OF WALL SECTION

* Drill & Grout d2(E) & d4(E) Bars in 1/8" Dia. drilled holes with a minimum depth of 1'-3", according to Article 584 of the Standard Specifications. (Cost included with Reinforcement Bars, Epoxy Coated)

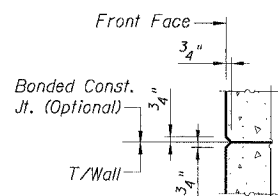
** Existing reinforcing steel which is exposed by the concrete removal process, but which is to remain partially embedded in the existing structure, shall be cleaned to be free of existing concrete and rust, straightened if necessary, and recast into the new concrete. (Cost included with Concrete Removal).



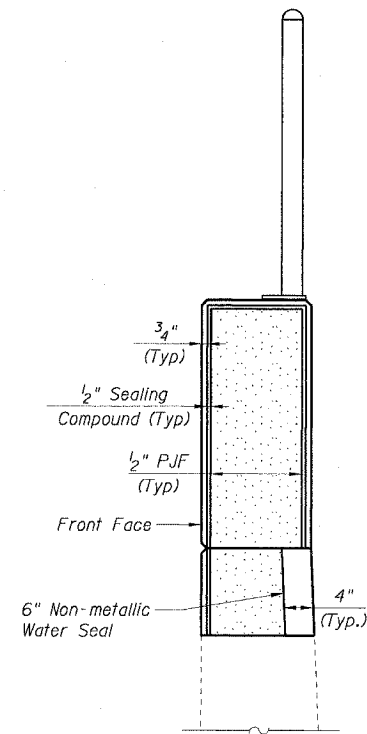
EXPANSION JOINT SEALING DETAIL



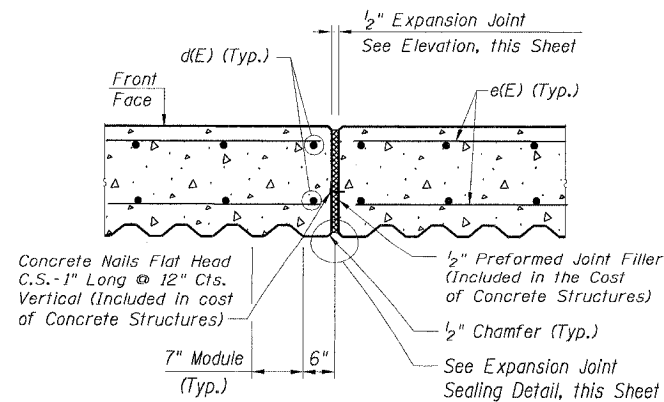
SECTION J-J



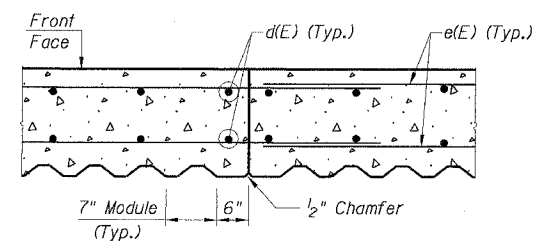
DETAIL A



EXPANSION JOINT ELEVATION



EXPANSION JOINT DETAIL



CONSTRUCTION JOINT DETAIL

LEGEND:

	Structure Excavation
	Porous Granular Embankment
	Concrete Removal

CTE | AECOM

REVISIONS	
NAME	DATE

Sheet B5 of 7
ILLINOIS DEPARTMENT OF TRANSPORTATION
F.A.I. 90/94 (DAN RYAN EXPRESSWAY)
63RD STREET TO GARFIELD BLVD (SB LOCAL LANES)
WALL SECTIONS & DETAILS
69TH STREET SOUTHWEST RETAINING WALL
SECTION (1818, ETC, 2324.6-1P) R-11
STATION 61+65.38 TO 67+08.38
COOK COUNTY
SCALE: None DRAWN BY: CHD
DATE: June 9, 2006 CHECKED BY: MJP

F:\P40468\Struct\08-Conf\889\90\94\90A19AS\1919A012A016-W5.SIT 10:55:06 AM 6/27/2006