

F.A.U. RTE.	SECTION	COUNTY	TOTAL SHEETS	SHEET NO.
1360	0101BR-2	COOK	90	11
FED. ROAD DIST. NO. 1		ILLINOIS	FED. AID PROJECT	
		CONTRACT NO. 60A65		

LEGEND

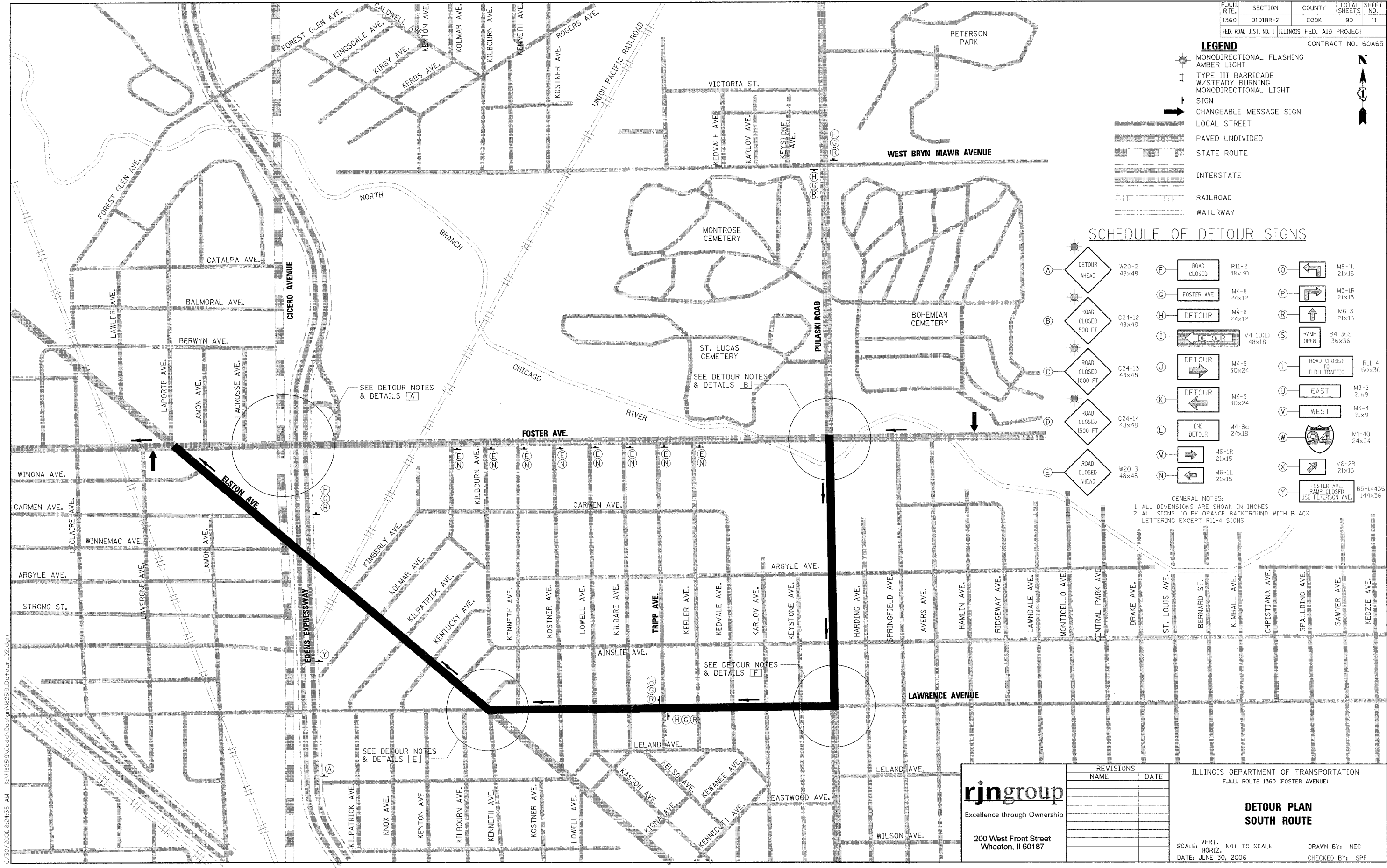
- MONODIRECTIONAL FLASHING AMBER LIGHT
- TYPE III BARRICADE W/STEADY BURNING MONODIRECTIONAL LIGHT SIGN
- CHANGEABLE MESSAGE SIGN
- LOCAL STREET
- PAVED UNDIVIDED
- STATE ROUTE
- INTERSTATE
- RAILROAD
- WATERWAY



SCHEDULE OF DETOUR SIGNS

	W20-2 48x48		R11-2 48x30		M5-1 21x15
	C24-12 48x48		M4-8 24x12		M5-1R 21x15
	C24-13 48x48		M4-8 24x12		M6-3 21x15
	C24-14 48x48		M4-10(L) 48x18		B4-36S 36x36
	W20-3 48x48		M4-9 30x24		R11-4 60x30
			M4-9 30x24		M3-2 21x9
			M4-8c 24x18		M3-4 21x9
			M6-1R 21x15		M1-10 24x24
			M6-1L 21x15		M6-2R 21x15
					B5-14436 144x36

GENERAL NOTES:
 1. ALL DIMENSIONS ARE SHOWN IN INCHES
 2. ALL SIGNS TO BE ORANGE BACKGROUND WITH BLACK LETTERING EXCEPT R11-4 SIGNS



6/30/2006 8:24:35 AM K:\1182519\Cadd\Design\182519_Detour_02.dgn

rjngroup
 Excellence through Ownership
 200 West Front Street
 Wheaton, IL 60187

REVISIONS	
NAME	DATE

ILLINOIS DEPARTMENT OF TRANSPORTATION
 F.A.U. ROUTE 1360 (FOSTER AVENUE)

**DETOUR PLAN
 SOUTH ROUTE**

SCALE: VERT. NOT TO SCALE
 DATE: JUNE 30, 2006

DRAWN BY: NEC
 CHECKED BY: SPF