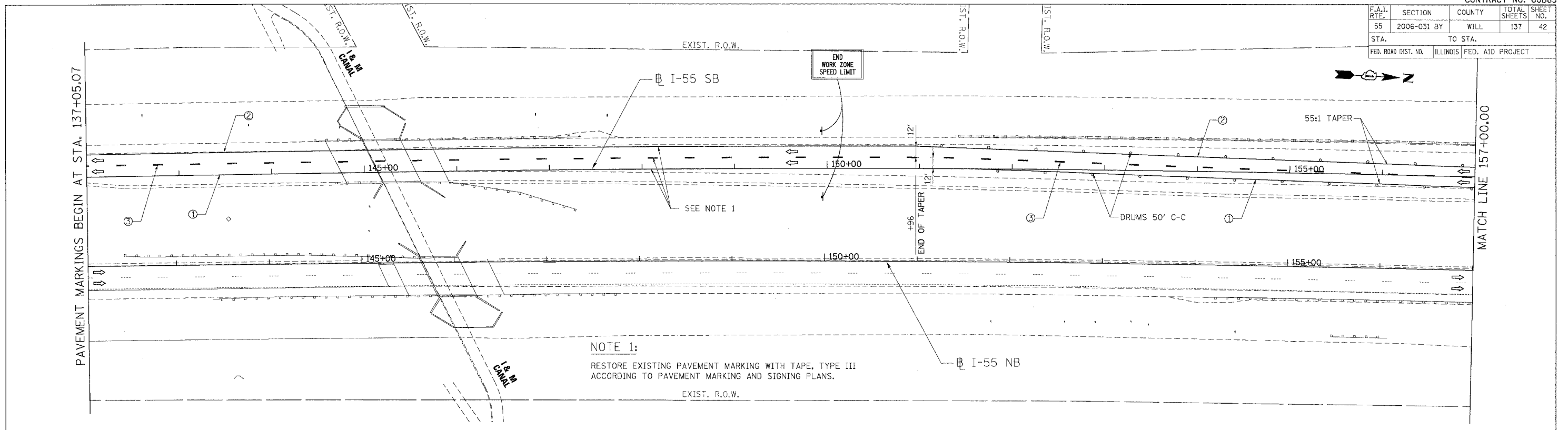
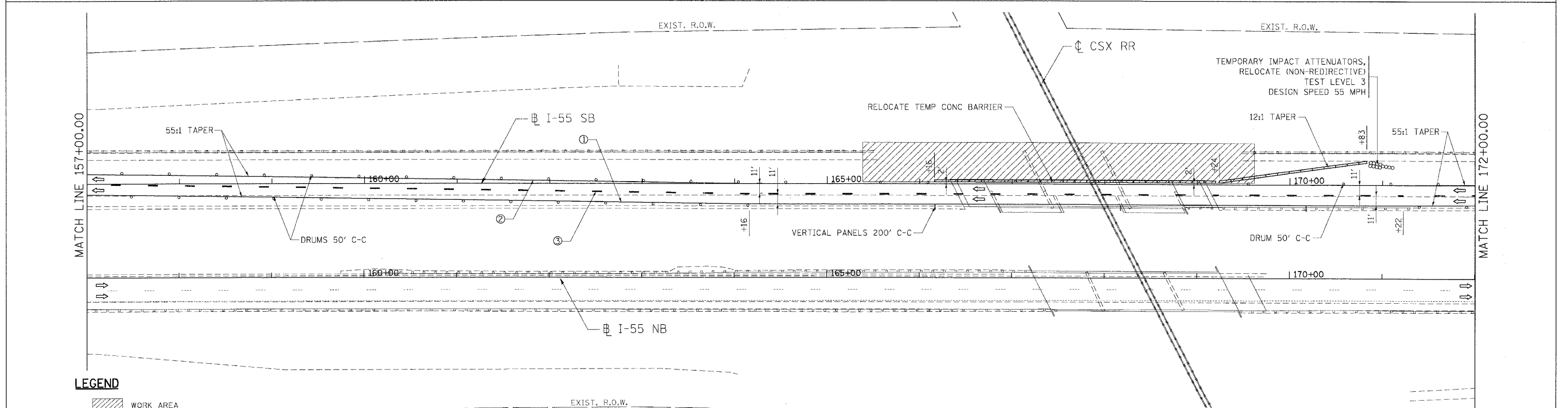


F.A.I. RTE.	SECTION	COUNTY	TOTAL SHEETS	SHEET NO.
55	2006-031 BY	WILL	137	42
STA.		TO STA.		
FED. ROAD DIST. NO.		ILLINOIS	FED. AID PROJECT	



**NOTE 1:**  
RESTORE EXISTING PAVEMENT MARKING WITH TAPE, TYPE III ACCORDING TO PAVEMENT MARKING AND SIGNING PLANS.



**LEGEND**

- WORK AREA
- DRUMS W/ MONO-DIRECTIONAL STEADY BURN LIGHT
- VERTICAL PANEL
- TEMPORARY CONC. BARRIER
- TRAFFIC FLOW
- BARRICADE, TYPE III WITH TWO FLASHING LIGHTS

- ① PVMT. MARKING TAPE, TYPE III, 4", YELLOW
- ② PVMT. MARKING TAPE, TYPE III, 4", WHITE
- ③ PVMT. MARKING TAPE, TYPE III, 5" (10' DASH 30' SKIP)
- ④ PVMT. MARKING TAPE, TYPE III, 4" WHITE (2' DASH 6' SKIP)

**NOTE:**

AFTER CONSTRUCTION OF THE CONCRETE BARRIER AND THE BASE COURSE FOR THE NEW INSIDE LANES AND SHOULDERS IS COMPLETED, THE TEMPORARY CONCRETE BARRIER SHALL BE REMOVED AND REPLACED WITH DRUMS WITH STEADY BURN LIGHTS AT THE SPACING SHOWN IN THE PLANS.

REVISIONS	
NAME	DATE

ILLINOIS DEPARTMENT OF TRANSPORTATION  
FAI ROUTE 55 (OVER CSX RR AND SUNNYLAND DRAIN)  
BRIDGE WIDENING

**STAGING AND TRAFFIC CONTROL  
FAI 55 - STAGE II  
STA. 142+00.00 TO STA. 172+00.00**

SCALE: 1"=50' DRAWN BY JP  
DATE 07/21/06 CHECKED BY DDH

**TENG**  
TENG & ASSOCIATES, INC.  
ENGINEERS/ARCHITECTS/PLANNERS  
CHICAGO, ILLINOIS

PLOT DATE = 08/18/06  
 FILE NAME = I:\PROJECTS\60B85\DRAWINGS\STAGING AND TRAFFIC CONTROL\STAGING AND TRAFFIC CONTROL - STAGE II\STAGING AND TRAFFIC CONTROL - STAGE II - PLAN - 157+00.00 TO 172+00.00.DWG  
 USER = JPB  
 PLOTTER = HPGLA240