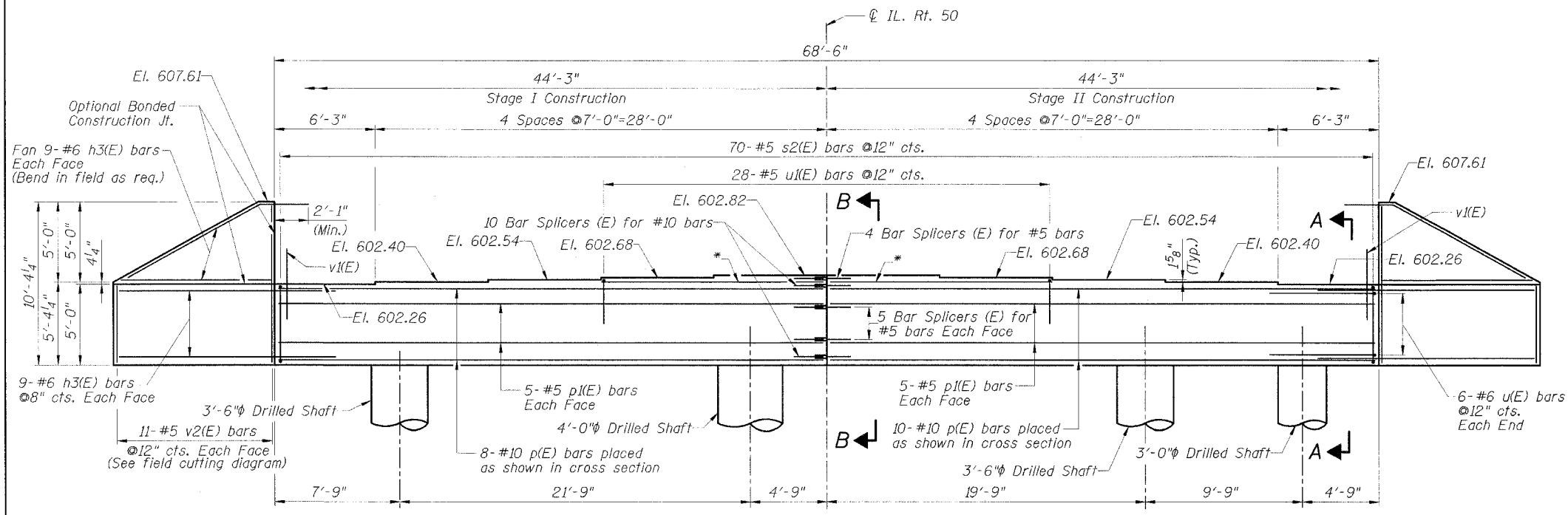


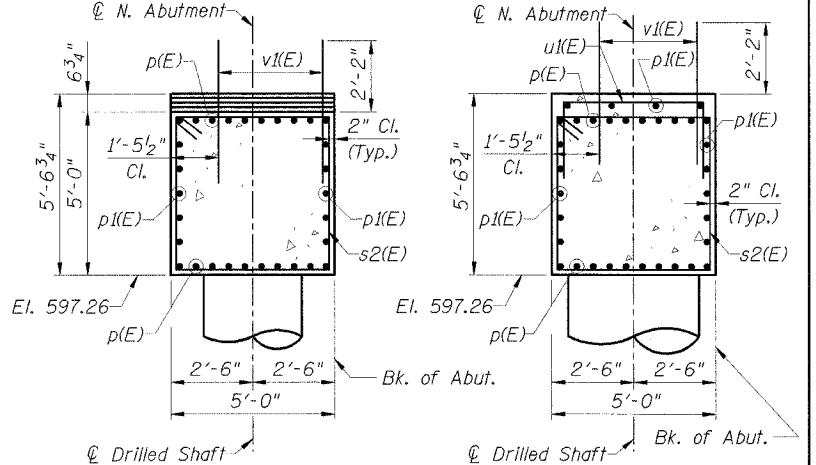
F.A.P. RTE.	SECTION	COUNTY	TOTAL SHEETS	SHEET NO.
350	57B-3F	COOK	12	11
FED. ROAD DIST. NO. 7 ILLINOIS FED. AID PROJECT				

CONTRACT NO. 60887



NORTH ABUTMENT ELEVATION
(Looking North)

* 4- #5 p(E) bars placed as shown in Section B-B



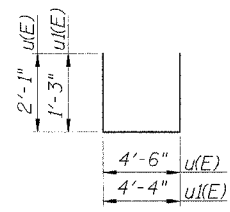
SECTION A-A

SECTION B-B

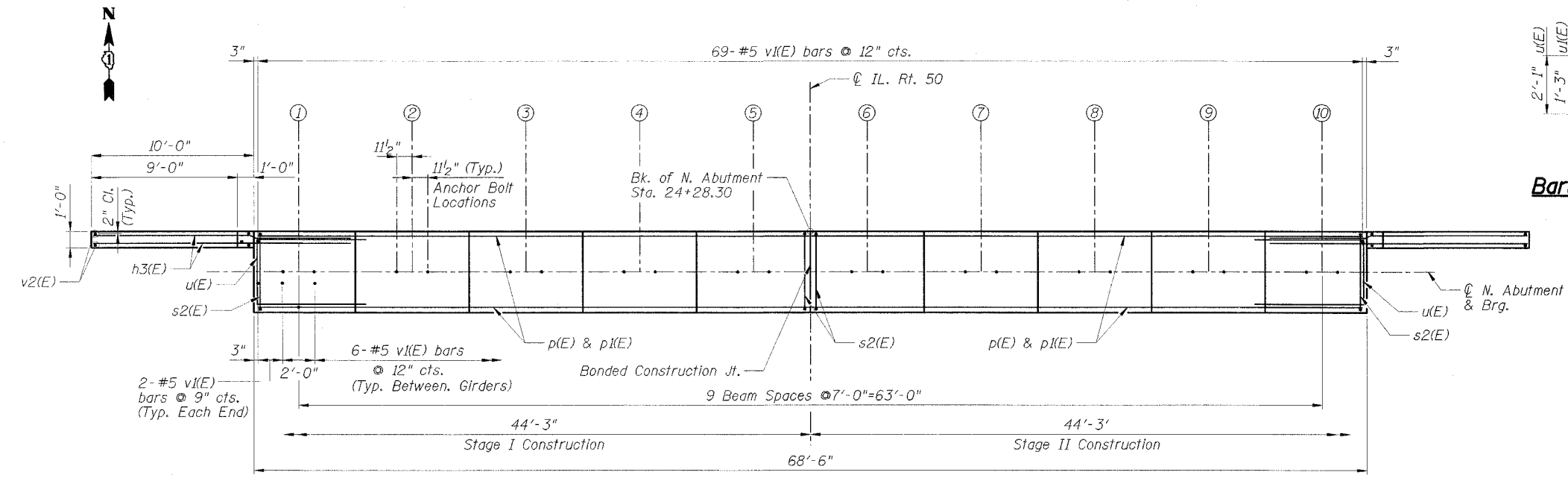
BILL OF MATERIAL

Bar	No.	Size	Length	Shape
h3(E)	72	#6	13'-0"	—
p(E)	40	#10	33'-11"	—
p1(E)	28	#5	33'-11"	—
s2(E)	70	#5	19'-8"	□
u(E)	12	#6	8'-8"	□
u1(E)	28	#5	6'-10"	□
v1(E)	127	#5	4'-4"	—
v2(E)	22	#5	14'-6"	—
Structure Excavation		Cu. Yd.	274.9	
Concrete Structures		Cu. Yd.	72.8	
Reinforcement Bars, Epoxy Coated		Lbs.	10,930	
Bar Splicers		Each	34	
Porous Granular Embankment		Cu. Yd.	177.7	

Bar s2(E)



Bars u(E) & u1(E)



PLAN

FIELD CUTTING DIAGRAM

Order v2(E) bars full length. Cut as shown and use remainder of bars in opposite face.

ILLINOIS DEPARTMENT OF TRANSPORTATION
NORTH ABUTMENT
FAP 350 IL ROUTE 50 (CICERO AVE.) OVER
NORTH BRANCH OF THE CHICAGO RIVER
COOK COUNTY STATION 23+65.80
SECTION 57B-3F
STRUCTURE NO. 016-2782

REVISIONS	
NAME	DATE

SCALE: NONE
DATE: 6/29/06
DRAWN BY: G. Hatlestad
CHECKED BY: P. Lopez

THIS SHEET IS FOR INFORMATION ONLY

- Notes:**
1. For Anchor Bolt details see Sheet S13.
 2. For Drilled Shaft details see Sheet S3.
 3. Reinforcement bars designated (E) shall be epoxy coated.
 4. Space reinforcement to miss anchor bolts.
 5. Cast steps monolithically with abutment.
 6. For PGE and Filter Fabric details see Sheet S2.
 7. For Bar Splicer details see Sheet S14.