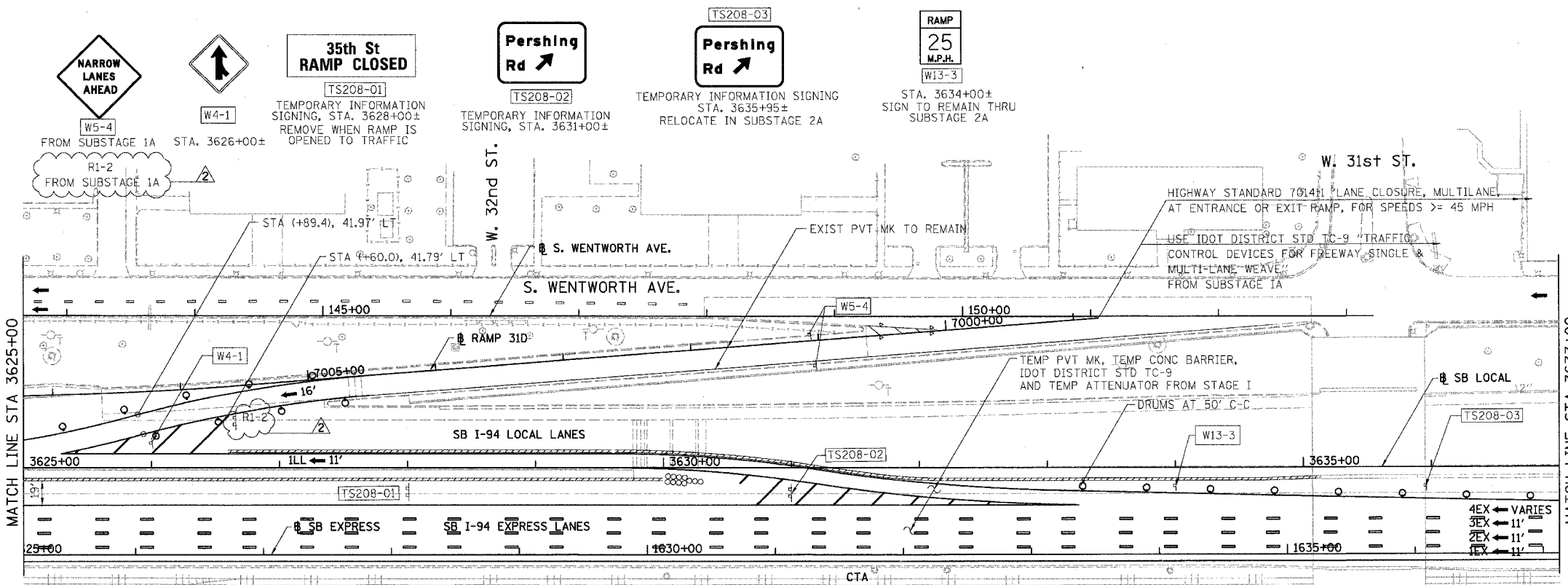
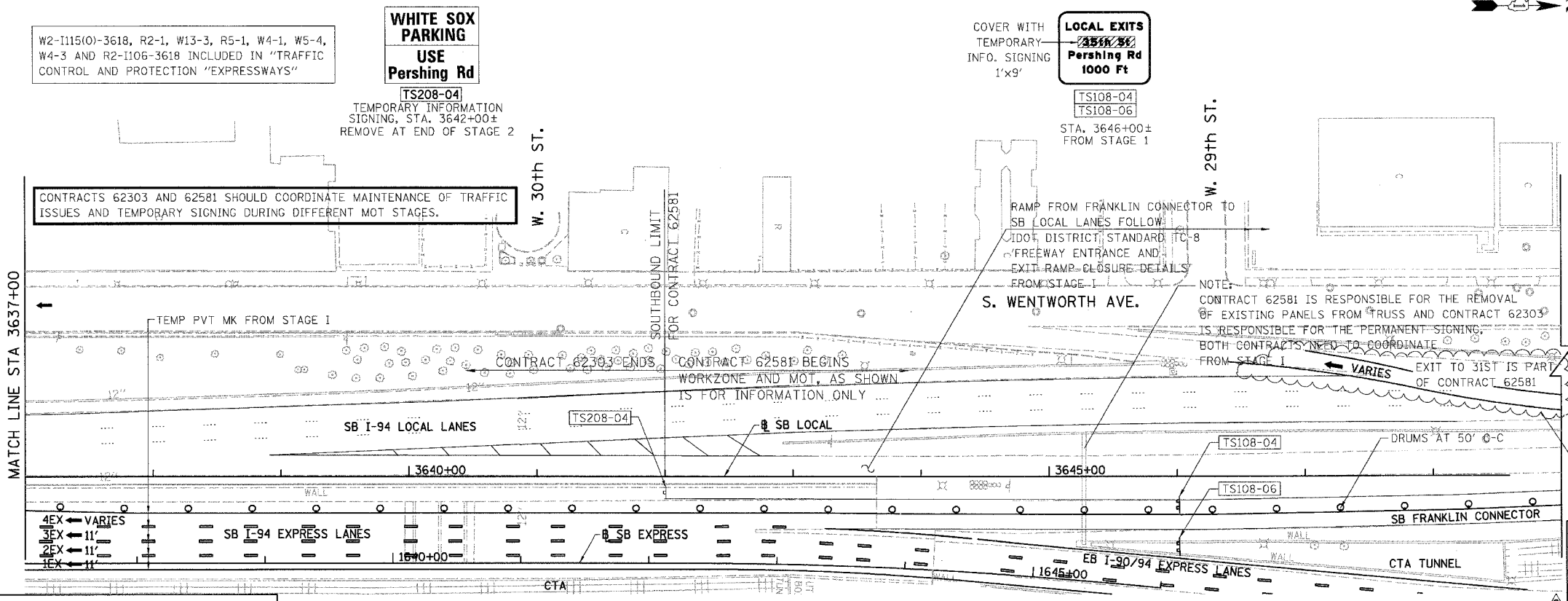


F.A.I.	SECTION	COUNTY	TOTAL SHEETS	SHEET NO.
94/90	*	COOK	588	102
STA.	TO STA.			
FED. ROAD DIST. NO.	ILLINOIS	FED. AID PROJECT		
62303	* (2021-922 PT2 ETC 2324.6-1P) R-11			



- LEGEND:**
- 1 → LANE NUMBER AND DIRECTION OF TRAFFIC
  - ▨ WORK AREA
  - ▨ TEMPORARY PAVEMENT
  - ⊘ IMPACT ATTENUATORS, TEMPORARY (NON-REDIRECTIVE), TEST LEVEL 3
  - ⊘ DRUM OR BARRICADE TYPE II WITH STEADY BURNING LIGHT
  - ⊘ BARRICADE TYPE III
  - ▨ TEMPORARY CONCRETE BARRIER
  - ① LINE 4" (YELLOW EDGE)
  - ② LINE 4" (WHITE EDGE)
  - ③ LINE 4" (SKIP DASH, 6' SKIP - 2' DASH, WHITE)
  - ④ LINE 5" (SKIP DASH, 30' SKIP - 10' DASH, WHITE)
  - ⑤ LINE 8" (WHITE GORE LINE)
  - ⑥ LINE 8" (SKIP DASH, 12' SKIP - 3' DASH, WHITE)
  - ⑦ LINE 12" (DIAGONAL, 30' C-C, WHITE)
  - ⑧ LETTERS AND SYMBOLS
  - ES-XXX-XX EXISTING OVERHEAD OR CANTILEVER SIGNS
  - GS-XXX-XX EXISTING POST MOUNTED SIGNS
  - TS-XXX-XX TEMPORARY SIGNS
- +XX.XX STATION PROVIDED FROM THE ± SB I-90/94 EXPRESS LANES  
 (+XX.XX) STATION PROVIDED FROM THE ± SB I-90/94 LOCAL LANES



REVISIONS	
NAME	DATE
ADDENDUM 2	8/04/06

ILLINOIS DEPARTMENT OF TRANSPORTATION  
 F.A.I. 94/90 (DAN RYAN EXPRESSWAY)  
 GARFIELD BLVD TO 31ST STREET (SB LOCAL LANES)  
 SUGGESTED STAGES OF CONSTRUCTION  
 AND TRAFFIC CONTROL  
 STAGE 2

SCALE: 1"=50'  
 DATE: 06/09/06  
 DRAWN BY: RA  
 CHECKED BY: RS

BOWMAN, BARRETT & ASSOCIATES INC.  
 CONSULTING ENGINEERS  
 Chicago, Illinois  
 312.228.0100  
 www.bbainc.com

SB I-94/90 EXPRESS LANES TEMPORARY PAVEMENT MARKINGS WERE INSTALLED IN STAGE I AND SUBSTAGE IA, UNLESS OTHERWISE SPECIFIED IN STAGE 2.  
 CROSS OVER RAMPS TEMPORARY PAVEMENT MARKINGS INSTALLED IN PREVIOUS STAGE TO REMAIN TO NEXT STAGE, UNLESS OTHERWISE SPECIFIED.

W2-I115(O)-3618, R2-1, W13-3, R5-1, W4-1, W5-4, W4-3 AND R2-I106-3618 INCLUDED IN "TRAFFIC CONTROL AND PROTECTION "EXPRESSWAYS"

**WHITE SOX PARKING**  
 USE  
 Pershing Rd

**LOCAL EXITS**  
 Pershing Rd  
 1000 Ft

CONTRACTS 62303 AND 62581 SHOULD COORDINATE MAINTENANCE OF TRAFFIC ISSUES AND TEMPORARY SIGNING DURING DIFFERENT MOT STAGES.

RAMP FROM FRANKLIN CONNECTOR TO SB LOCAL LANES FOLLOW IDOT DISTRICT STANDARD TC-8 FREEWAY ENTRANCE AND EXIT RAMP CLOSURE DETAILS FROM STAGE I

NOTE: CONTRACT 62581 IS RESPONSIBLE FOR THE REMOVAL OF EXISTING PANELS FROM TRUSS AND CONTRACT 62303 IS RESPONSIBLE FOR THE PERMANENT SIGNING. BOTH CONTRACTS NEED TO COORDINATE FROM STAGE I

EXIT TO 31ST IS PART OF CONTRACT 62581

CONTRACT 62303 ENDS  
 CONTRACT 62581 BEGINS  
 WORKZONE AND MOT, AS SHOWN IS FOR INFORMATION ONLY