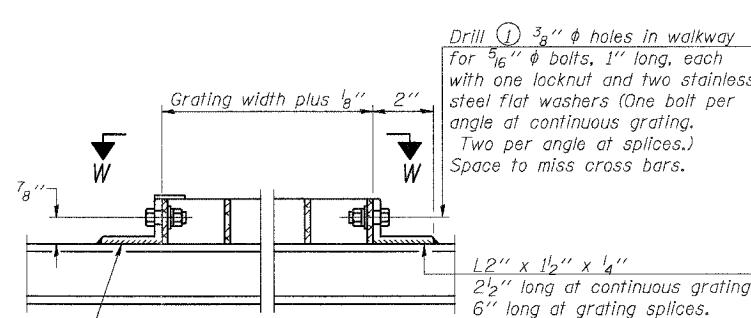
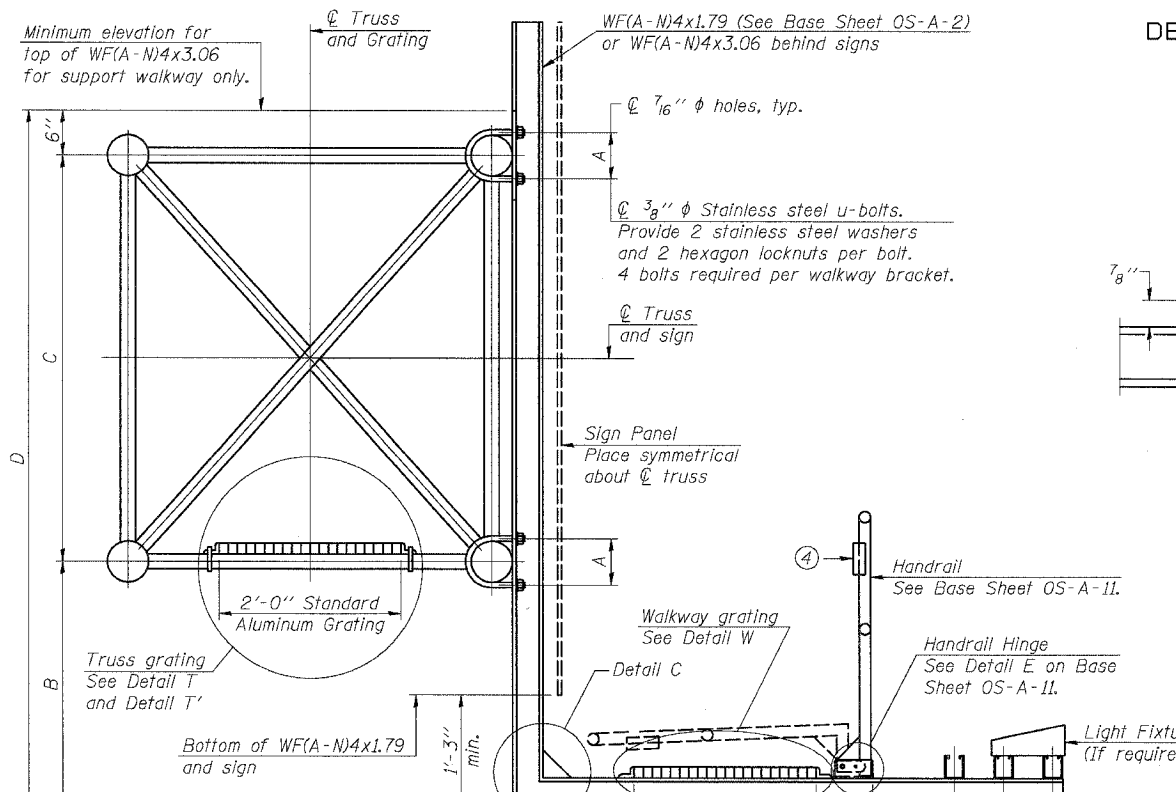


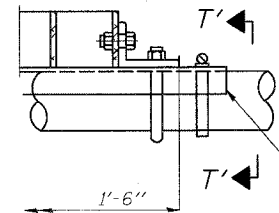
STATE OF ILLINOIS
DEPARTMENT OF TRANSPORTATION

ROUTE NO.	SECTION	COUNTY	PROJECT	SHEET
94/90	*	COOK	588	276

FED. ROAD DIST. NO. 1 ILLINOIS FED. AID PROJECT-
* 62303 (2021-922 PT2 ETC 2324.6-IP) R-11

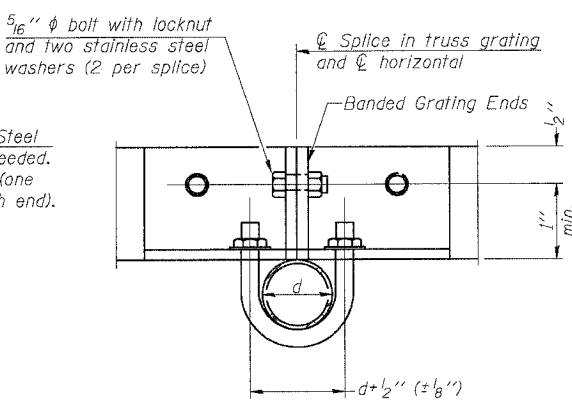


DETAIL W
(Walkway grating)

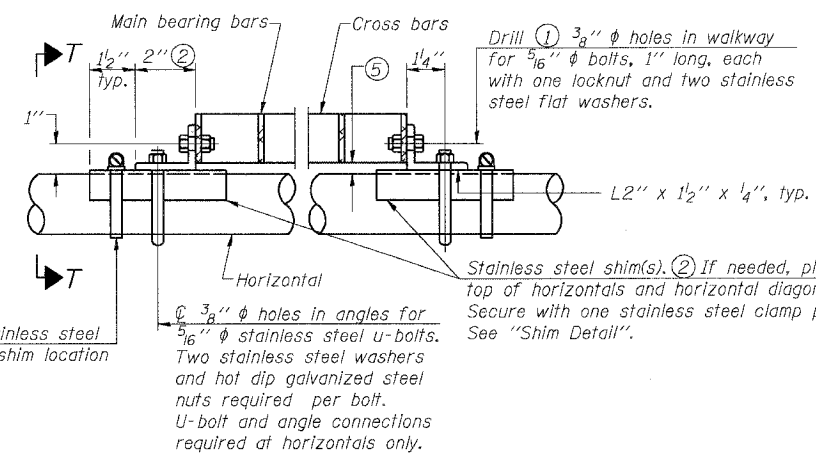


DETAIL T'

(Truss grating splice)
Details not shown same as Detail T. Alternate materials may be used subject to the Engineer's review and approval.

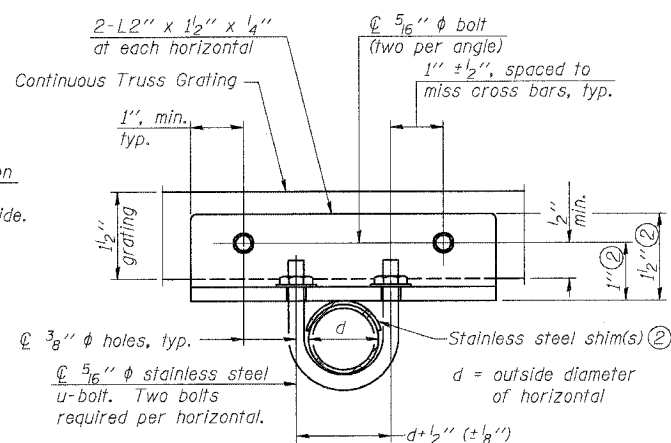


SECTION T'-T'



DETAIL T

(Continuous Truss grating)



SECTION T-T

SPECIFICATIONS FOR STANDARD ALUMINUM GRATING

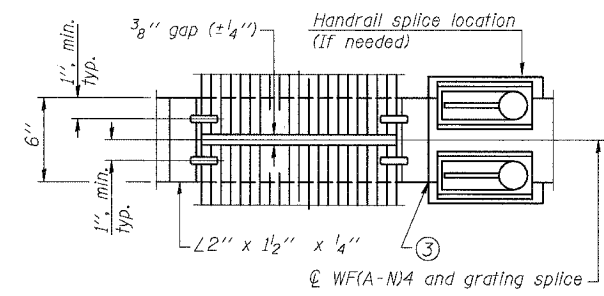
Main Bearing Bars shall be 3/16" x 1 1/2" on 1 3/16" centers and conform to ASTM B221 Alloy 6061-T6.
Cross bars shall be 3/16" x 1 1/2" on 4" centers and conform to ASTM B221 Alloy 6063-T5 or 6061-T6.

OR

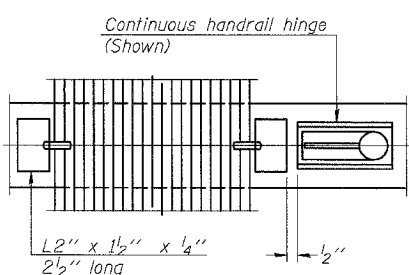
Aluminum Grating with modified "I" sections for main bearing bars shall meet the following requirements:
Main bars shall conform to ASTM B221 Alloy 6061-T6 and have a minimum section modulus equal to 0.0705 in.³ per bar, a depth of 1 1/2", spaced on 1 3/16" centers.
Cross bars shall conform to ASTM B221 Alloy 6063-T5 or T-42 and spaced on 4" centers.

Structure Number	Station	A	B	C	D
ISO161094R057.1	3511+00	6 1/2"	4'-10 1/2"	5'-3"	10'-7 1/2"
ISO161094R057.4	3493+30	5"	3'-3"	4'-6"	8'-3"
ISO161094R056.8	3524+00	6"	4'-10 1/2"	5'-3"	10'-7 1/2"
ISO161094R056.67	3532+00	6"	4'-10 1/2"	5'-3"	10'-7 1/2"
ISO161094R056.47	3543+00	6"	4'-7 1/2"	5'-3"	10'-4 1/2"
ISO161094R056.02	3566+30	5 1/2"	5'-0"	4'-6"	10'-0"
ISO161094R055.46	3596+00	5 1/2"	3'-3"	4'-6"	8'-3"
ISO161094R055.08	3616+00	5 1/2"	5'-6"	4'-6"	10'-6"

SECTION B-B

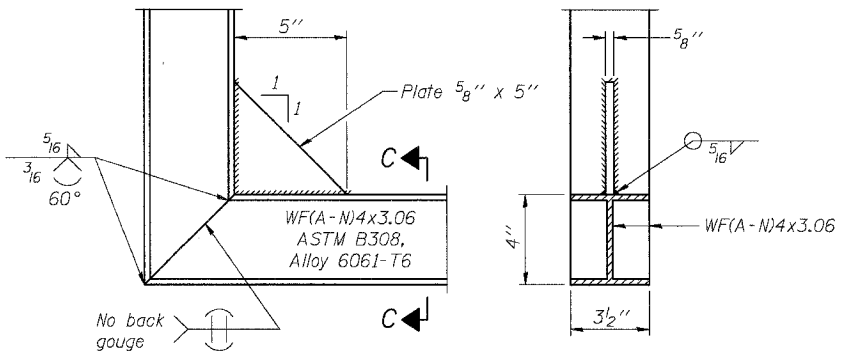


(AT WALKWAY GRATING SPLICE)



(CONTINUOUS WALKWAY GRATING)

SECTION C-C



DETAIL C

(See Detail P, Base Sheet OS-A-11.)

DESIGNED	AC	EXAMINED	20
CHECKED	AS	PASSED	ENGINEER OF STRUCTURAL SERVICES
DRAWN	RV	PASSED	ENGINEER OF BRIDGES AND STRUCTURES
CHECKED	MSA		

NUMBER	REVISION	DATE
ADDENDUM 2		8/04/06

OS-A-10

1-7-05

- Drilling holes in grating may be done in shop or field, based on Contractor's preference and subject to accurate alignment.
- Stainless steel shims shall be placed as shown in Detail T if needed to compensate for alignment variations between horizontal and diagonal pipes beyond adjustment provided by angles. Thicker shims may be used subject to shims performing properly.
- If Handrail Joint present, weld angle to WF*A-N*4 and 1/4" extension bars. *See Base Sheet OS-A-11.*
- 1/2" x 1/2" x 2" welded to handrail posts to protect locations that contact grating.
- Tube to grating gap may vary from 0 to 1/2", max. to align walkway, allow for camber, etc.

SGN-26

**OVERHEAD SIGN STRUCTURES
ALUMINUM WALKWAY DETAILS**

ILLINOIS DEPARTMENT OF TRANSPORTATION
F.A.I. 94/90 (DAN RYAN EXPRESSWAY)
GARFIELD BLVD TO 31st STREET (SB LOCAL LANES)

**OVERHEAD SIGN STRUCTURES
(SPAN)**