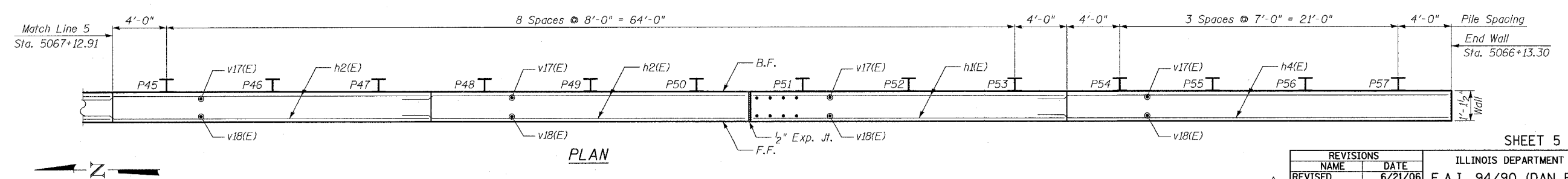
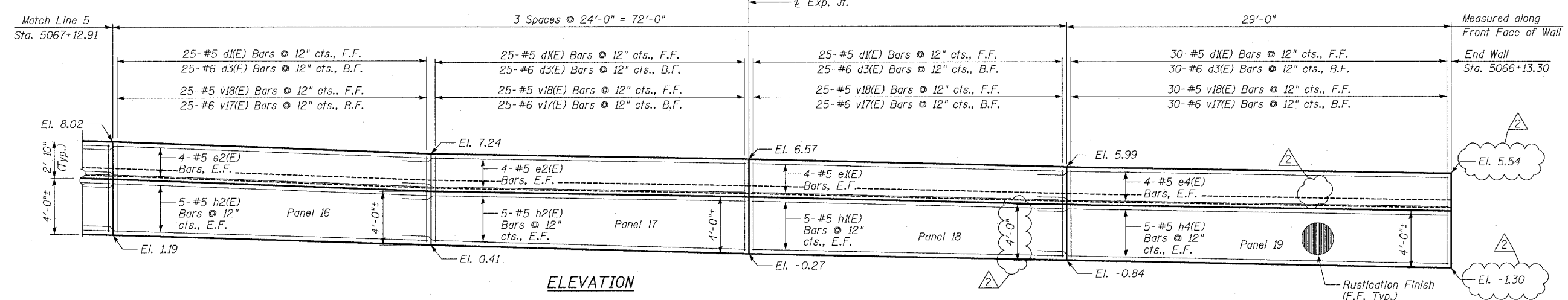
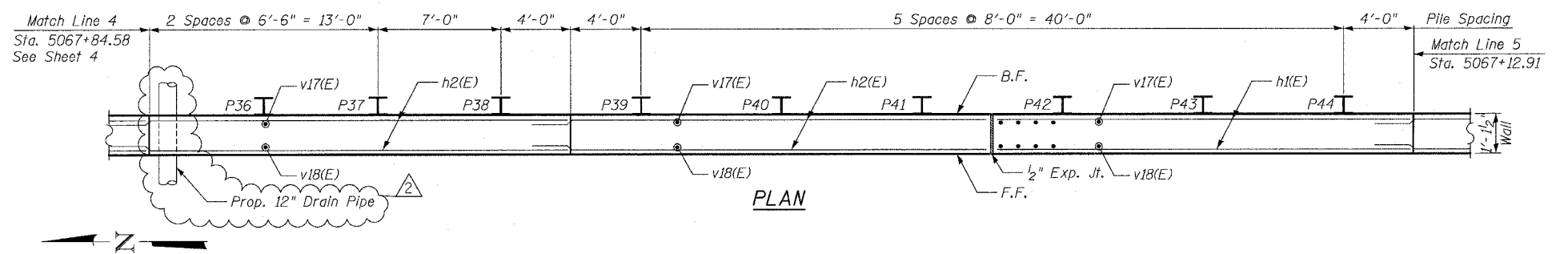
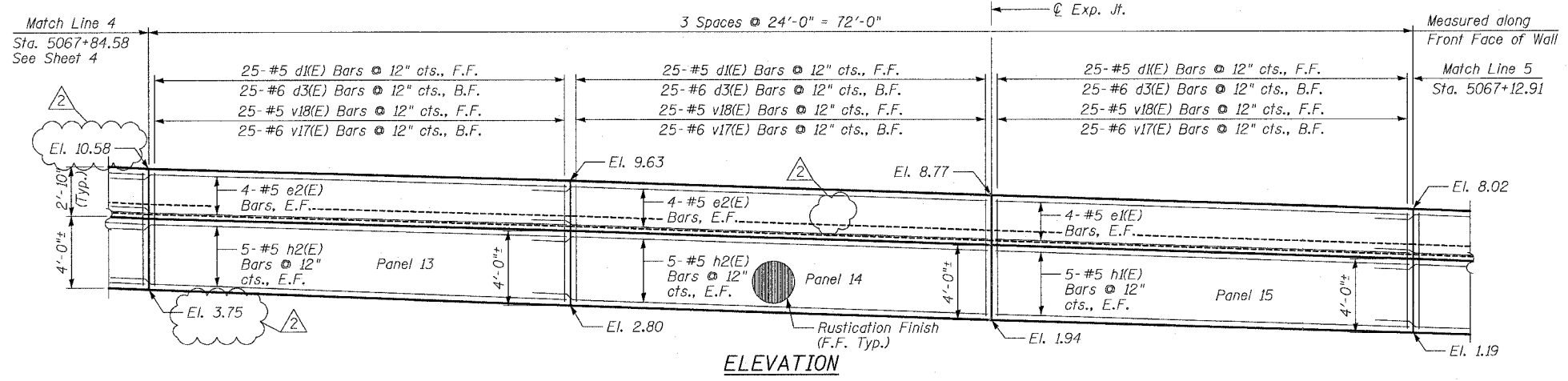


F.A.I.	SECTION	COUNTY	TOTAL SHEETS	SHEET NO.
84/90		COOK	588	401
STA.	TO STA.			
FED. ROAD DIST. NO. ILLINOIS FED. AID PROJECT				
62303 • (2021-922 PT2 ETC 2324.6-1P) R-11				

- NOTES:**
- Facing in Plan Views is scaled 1:2 on an X:Y scale to show reinforcement.
  - See Sheet 9 for reinforcing bar clearances.
  - Stations given are @ Ramp 47A.

F.F. - denotes Front Face  
 B.F. - denotes Back Face  
 E.F. - denotes Each Face

**MIN BAR LAP**  
 #5 - 2'-2"  
 #6 - 2'-7"



SHEET 5 OF 15

REVISIONS	
NAME	DATE
REVISION	6/21/06
ADDENDUM 2	8/04/06

ILLINOIS DEPARTMENT OF TRANSPORTATION  
 F.A.I. 94/90 (DAN RYAN EXPRESSWAY)  
 GARFIELD BLVD TO 31ST STREET (SB LOCAL LANES)

RETAINING WALL S-47N-R  
 WALL DETAILS 3

SCALE: NTS  
 DATE: JUNE 9, 2006  
 DRAWN BY: LAM  
 CHECKED BY: BLU

BOWMAN, BARRETT & ASSOCIATES INC.  
 CONSULTING ENGINEERS  
 Chicago, Illinois  
 312.228.0100  
 www.bbainc.com